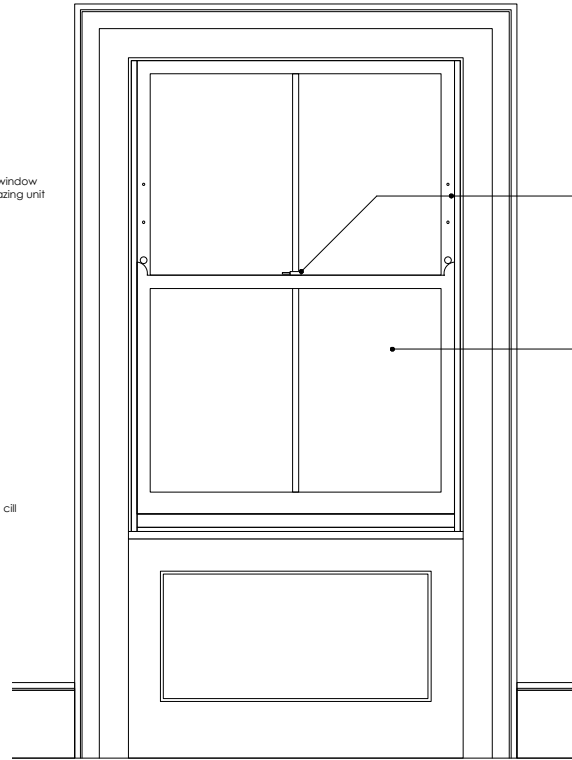


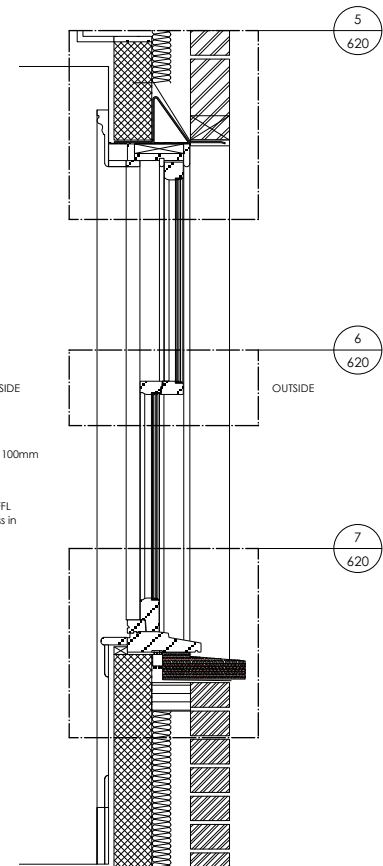
1 EXTERNAL ELEVATION
Scale 1:10 @ A1

New Windows of Rear Wing Only
W0.04, W0.05, W0.06
W1.06, W1.07
W2.06, W2.07
W3.06, W3.07

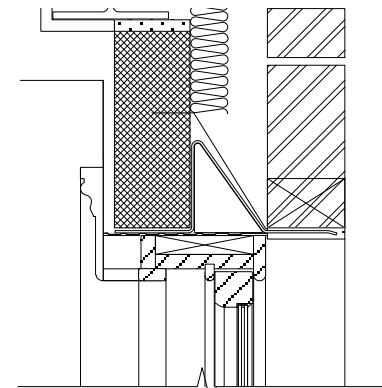


2 INTERNAL ELEVATION
Scale 1:10 @ A1

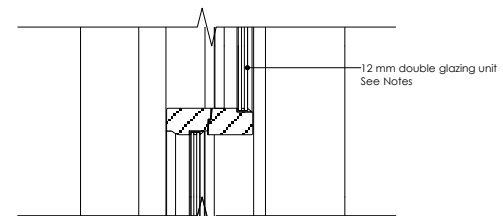
WINDOW PANEL AND FRAME
internal panel and moulded details are based on existing window details @ No.61 & No. 65 Swinton Street



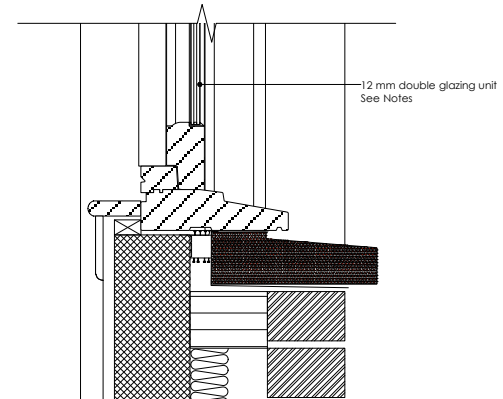
3 SECTION
Scale 1:10 @ A1



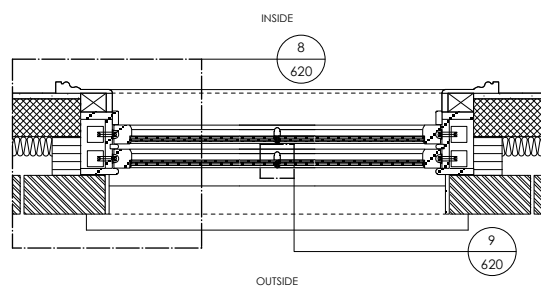
5 DETAIL SECTION - HEAD
Scale 1:5 @ A1



6 DETAIL SECTION - MEETING RAIL
Scale 1:5 @ A1



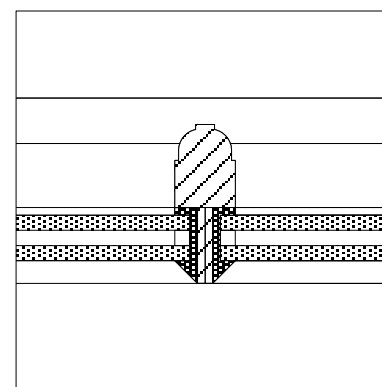
7 DETAIL SECTION - CILL
Scale 1:5 @ A1



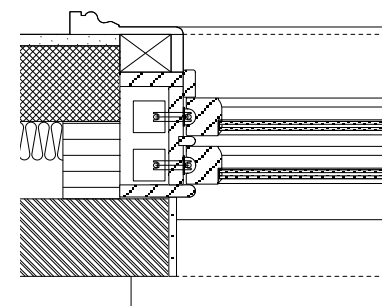
4 PLAN SECTION
Scale 1:10 @ A1



10 EXAMPLE OF EXISTING WINDOW (Retained)
N.T.S.



9 DETAIL SECTION - GLAZING BAR
Scale 1:1 @ A1



8 DETAIL PLAN SECTION - JAMB
Scale 1:5 @ A1

Notes:

**Drawing to be read in conjunction with:
Window Schedule 1307_902**

New Window

U-Value
Overall thermal performance to achieve minimum 1.6W/m²K in accordance with EN ISO 10077-1:2006 All profile and PSI calculations in accordance with BS EN ISO 10077-2:2003

Double Glazing Unit
Slim unit - overall thickness 12mm to 14mm
Example: Slimline Double Glazing Units
3 or 4mm Low E / 6mm Cavity, gas + warm edge spacer / 3 or 4mm Clear float or 4mm toughened U Value 1.4 BSEN673

Glazing unit construction in accordance with:
Certificate BSEN1279 Part 2 (Production Quality)
Certificate BSEN1279 Part 3 (Gas Leakage)

Low Level Glazing - less than 800mm AFFL
Lower sash to be fitted with safety glass (4mm toughened) in accordance with BS 6399 & BS 6180 Safety Glass Standards to meet:
Toughened glass, Class 1 BSEN 12150

A : Notes added / amended 14.09.18
REV: DATE:

DRAWING STATUS: STAGE 4
DO NOT SCALE OFF THIS DRAWING

di **divine ideas architects**
7A High Street, Wanstead, London E11 2AA
T: 02085307632 E: divineideas@me.com

Project: 65 Swinton Street, London WX1X 9NT

Client: Bowden House LLP

Address: 65 Swinton Street
LONDON
WC1X 9NT

Drawing Title: PROPOSED EXTERNAL DETAILS
NEW WINDOW TYPICAL

Date:	18.09.2014	Scale:	1:20 @ A3 1:10 @ A1
Drawn By:	RY	Checked By:	DC
Project No.	1307	Dwg No.	620
		Rev.	A

Copyright ©