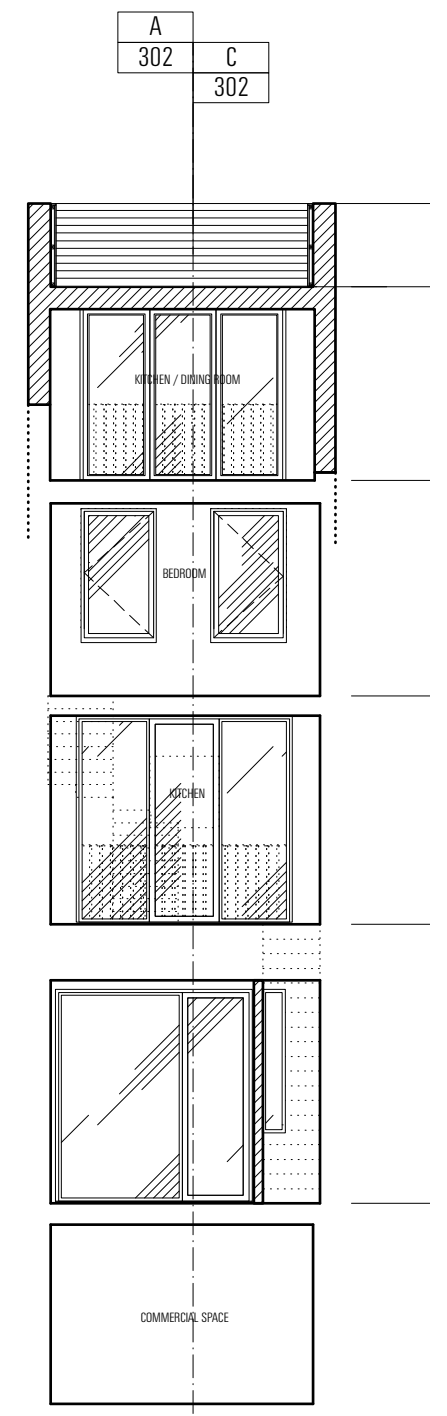


SECTION AA



SECTION BB

REVISIONS: REV A - 19.11.14 AMENDED FOLLOWING PRE-APPLICATION ADVICE

PROJECT: 400 - 14 HATTON WALL, LONDON, EC1N 8JN
 DWG. TITLE: SECTIONS AA & BB - PROPOSED
 DWG. NO.: 400_302A
 SCALE: 1:100 @A3
 DATE: 19.07.12
 ISSUE: INFORMATION

400

PROPOSED

SECTIONS AA & BB

EMULSION
 6 BAKER'S YARD LONDON EC1R 3DD
 T: 020 8127 1015 F: 020 8127 1016 E: CONTACT@EMULSIONARCHITECTURE.COM
 DO NOT SCALE. ALL DIMENSIONS TO BE CHECKED ON SITE. DO NOT REPRODUCE DRAWING. COPYRIGHT EMULSION LTD.