



BROMO BRICKS - GREY/WHITE MULTI COLOUR BRICK WITH HANDMADE TEXTURE



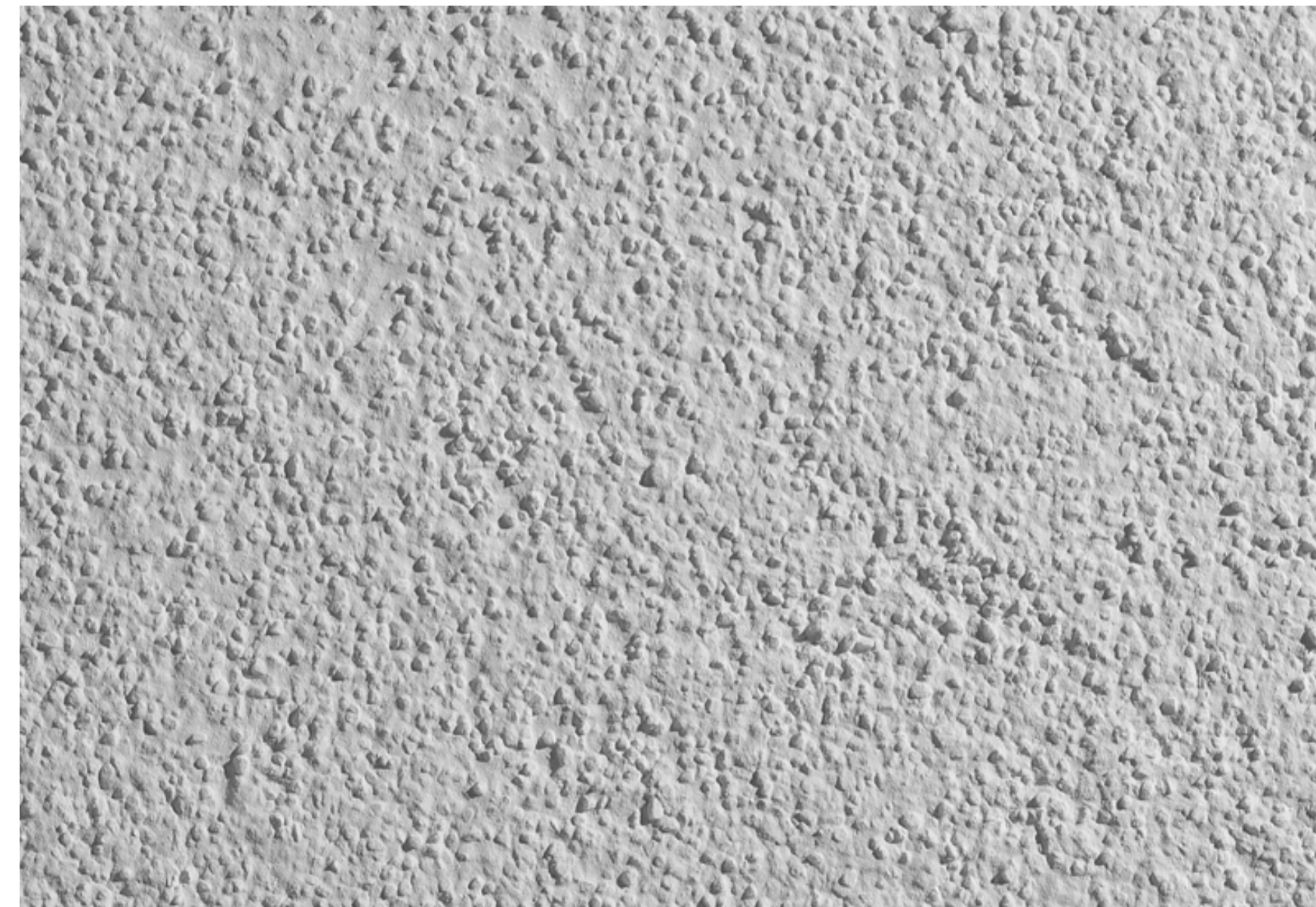
RAL 1035 - PEARL BEIGE FOR ALL METALWORK INCLUDING ALUMINIUM WINDOWS, CAPPINGS, BALUSTRADES



EXAMPLE OF ANODISED ALUMINIUM RAINSCREEN CLADDING



BROMO BRICKS - GREY/WHITE MULTI COLOUR BRICK WITH HANDMADE TEXTURE



ACRYLIC RENDER TO ATTIC STOREYS

A PALETTE OF HIGH QUALITY MATERIALS HAVE BEEN SELECTED TO COMPLEMENT EACH OTHER AND REFERENCE THE SURROUNDING CONTEXT.

THE SITE WAS ORIGINALLY OCCUPIED BY GEORGIAN TERRACED HOUSING. THE PALE BRICK REFERENCES THE GEORGIAN TOWNHOUSES ON FLEET ROAD.

RENDER IS FOUND ON MANY BUILDINGS IN THE SURROUNDING STREETS AND MOST NOTABLY THE ISOKON BUILDING FURTHER UP LAWN ROAD.

THE METALWORK FOR THE PROPOSED BUILDING ALSO REFERENCES THE BEIGE COLOUR OF THE ISOKON BUILDING WINDOW FRAMES.

This drawing, the work of architecture to which it relates, and any notes relating to them are protected by copyright. To the extent that this is a design document it is, in addition, protected by design right. All rights in them are reserved. They are provided for your information about the application only. No part of them or any design to which they relate may be reproduced in any form or any means without the prior written permission of Fairview Estates (Housing) Ltd, except as expressly permitted by law. The doing of any unauthorised act in relation to them may result in both a civil claim and criminal prosecution.

© john pardey architects

cad file:

Key

rev	date	initials	description

drawing:

MATERIAL IMAGES

project:

LAWN ROAD, BELSIZE PARK

drawing no: 1406-611

revision: -

status:

PLANNING

scale @ A3:

NTS

date: DEC 2014

