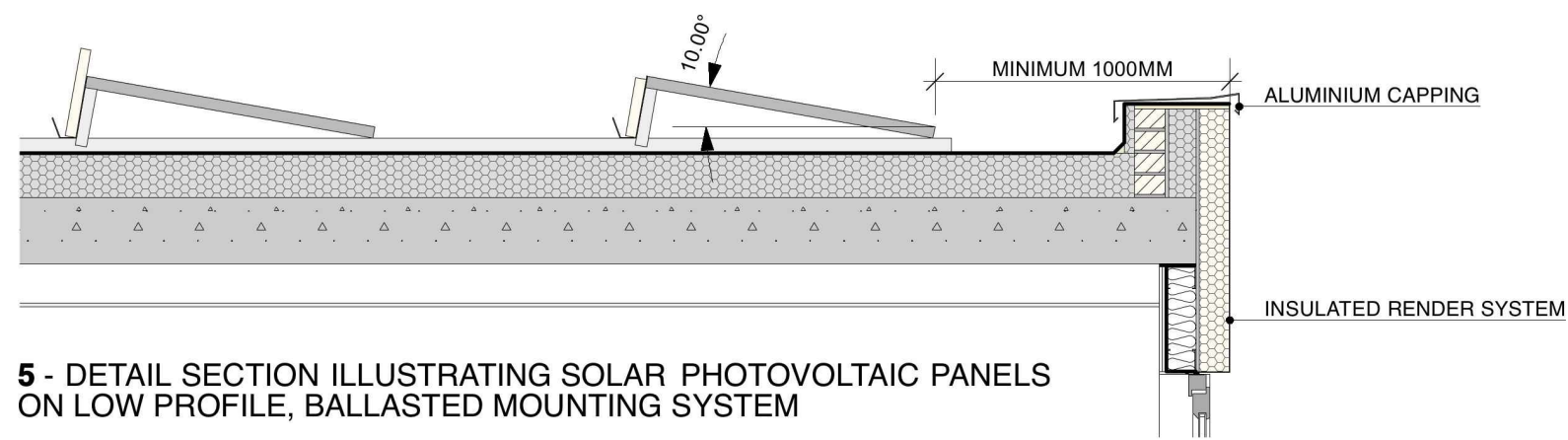
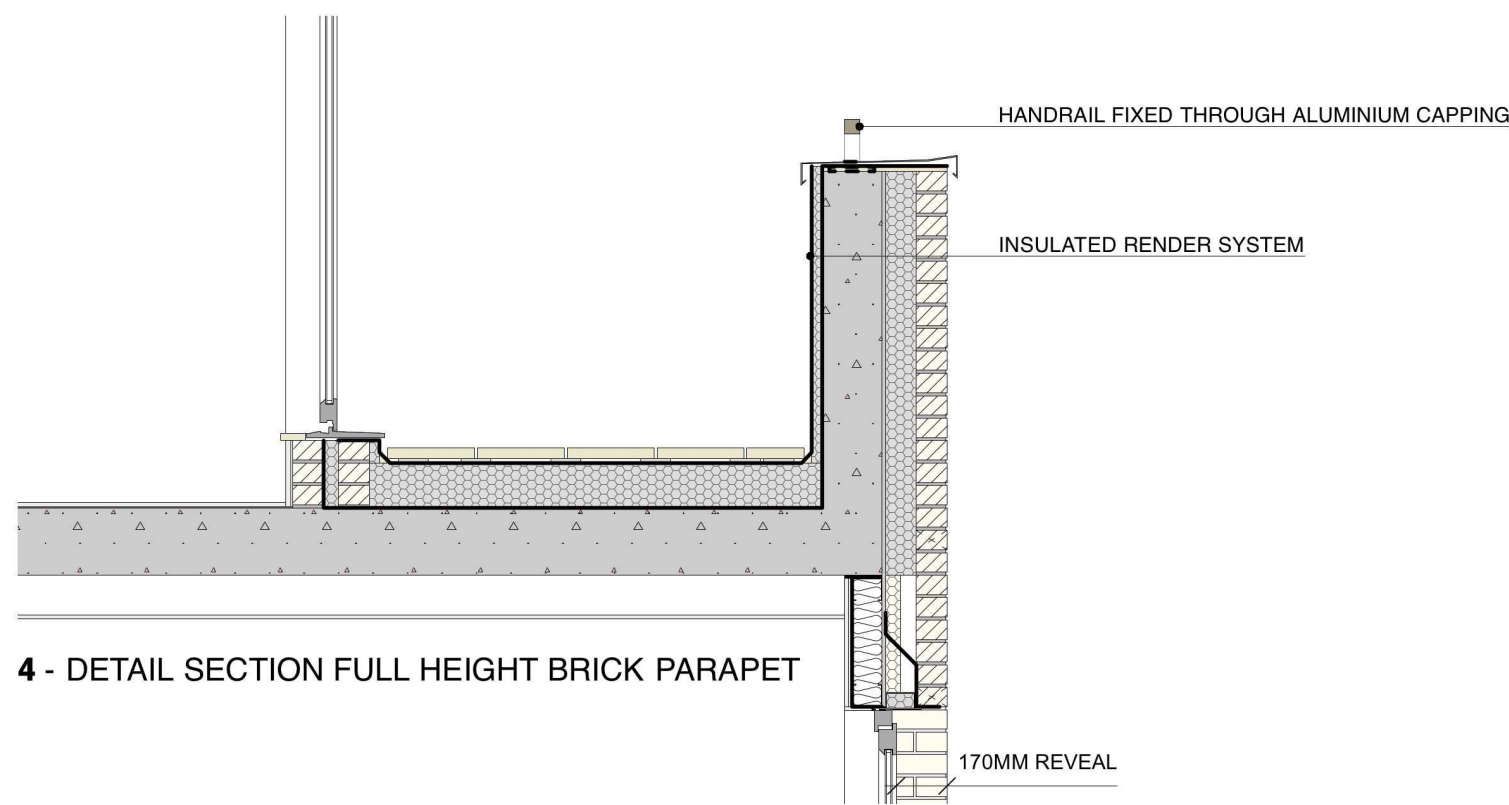


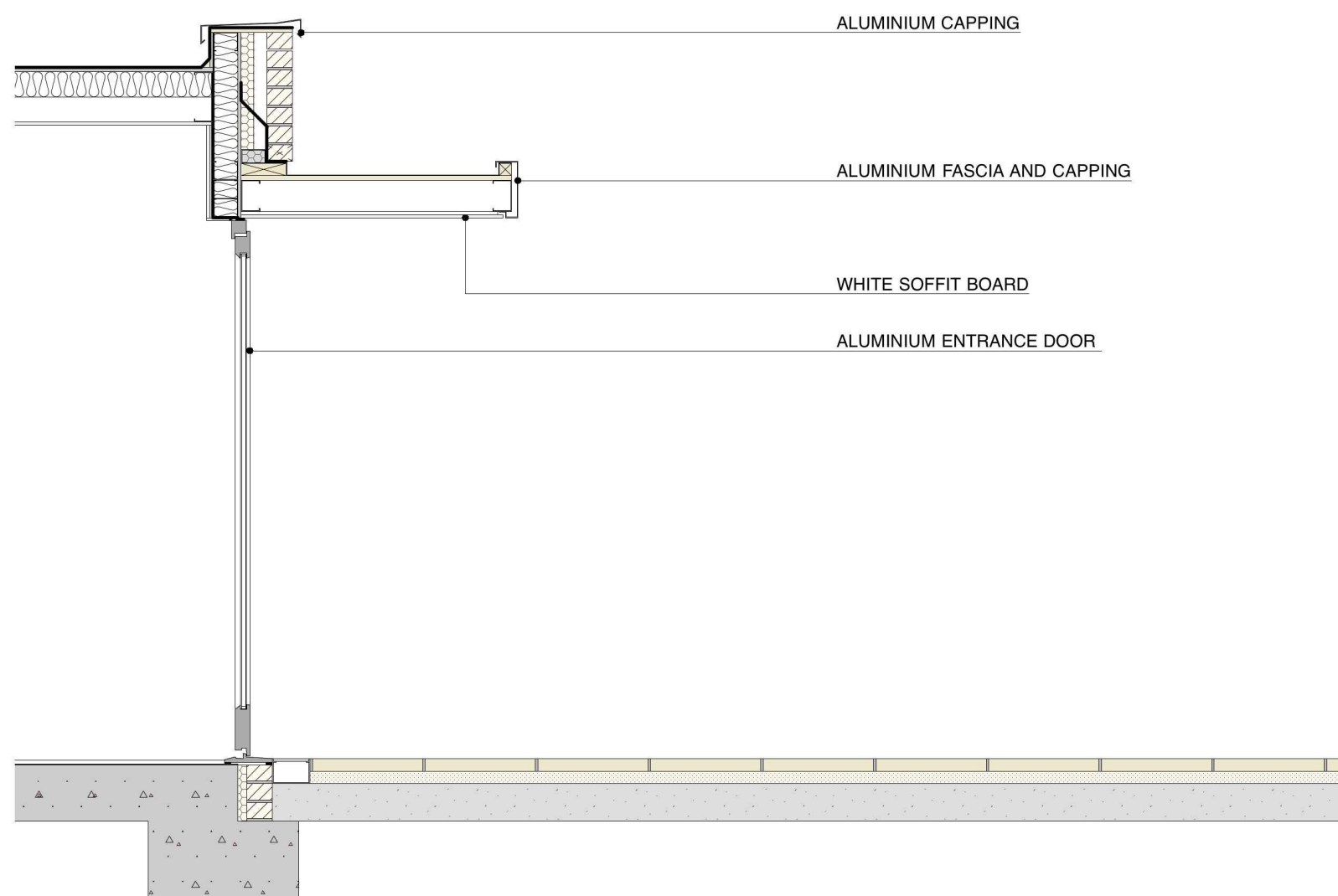
1 - DETAIL SECTION ILLUSTRATING REVEAL DEPTHS, LINTELS ABOVE WINDOWS, WINDOW SILL FLASHINGS, BALCONY SOFFITS + BALUSTRADES AND PARAPETS.



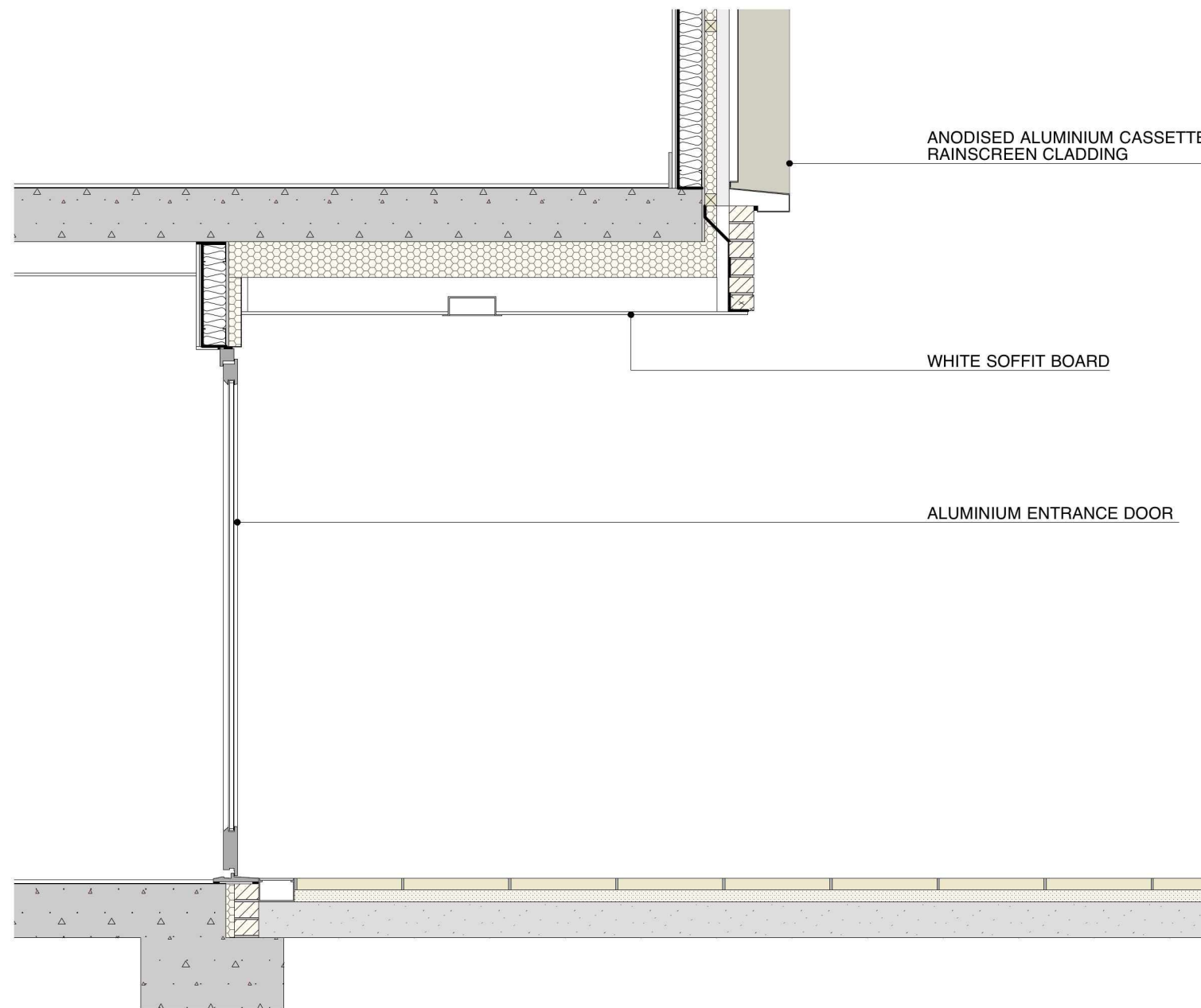
5 - DETAIL SECTION ILLUSTRATING SOLAR PHOTOVOLTAIC PANELS ON LOW PROFILE, BALLASTED MOUNTING SYSTEM



4 - DETAIL SECTION FULL HEIGHT BRICK PARAPET



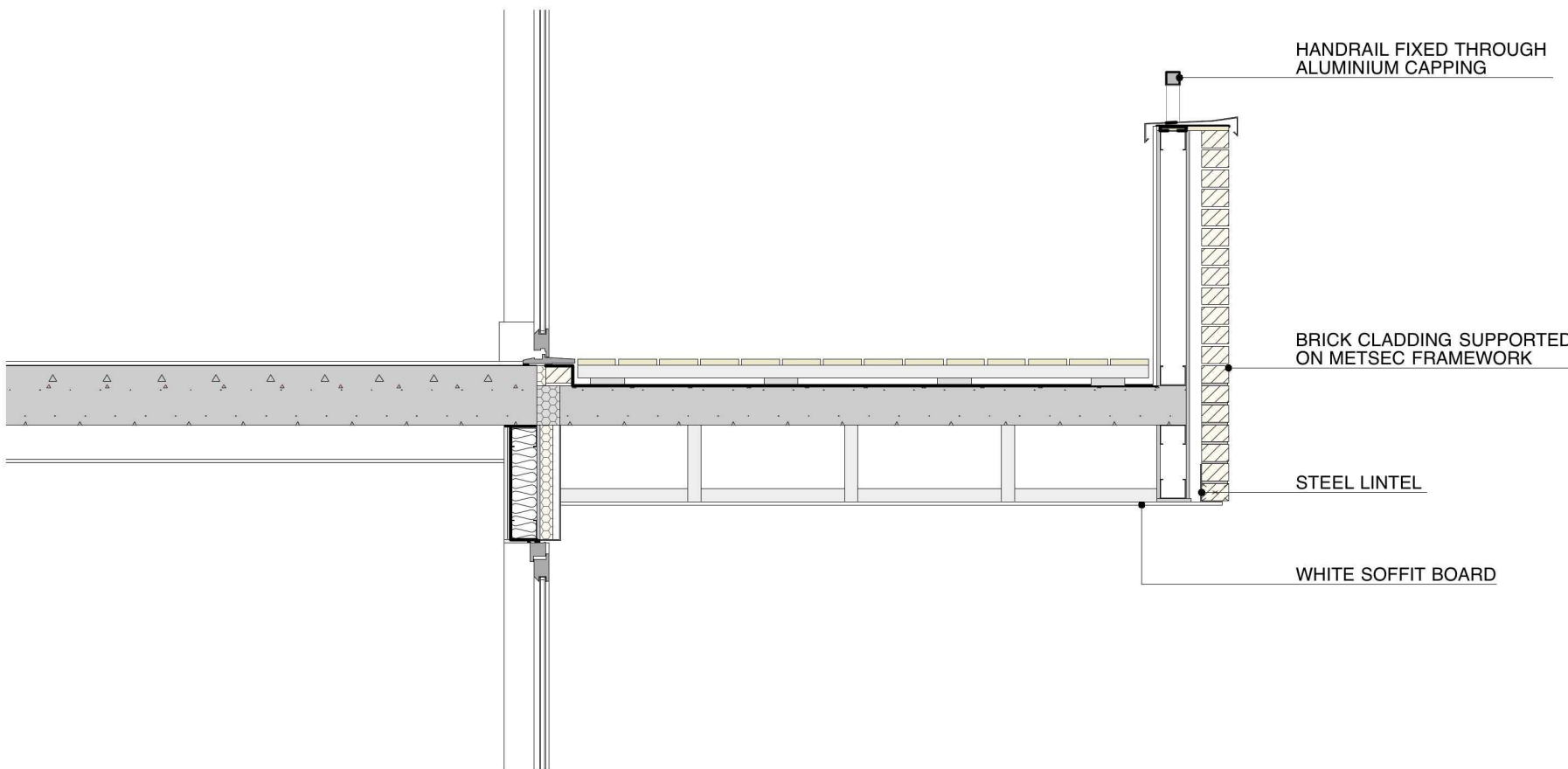
3 - DETAIL SECTION THROUGH COURTYARD ENTRANCE CANOPY



2 - DETAIL SECTION ILLUSTRATING RECESSED COMMUNAL ENTRANCES AND RAINSCREEN CLADDING



SOLAR PHOTOVOLTAIC PANELS ON LOW PROFILE, BALLASTED MOUNTING SYSTEM



6 - DETAIL SECTION THROUGH CURVED BALCONY



AXONOMETRIC STUDY OF BALCONIES. NTS

This drawing, the work of architecture to which it relates, and any notes relating to them are protected by copyright. To the extent that this is a design document it is, in addition, protected by design right. All rights in them are reserved. They are provided for your information about the application only. No part of them or any design to which they relate may be reproduced in any form or any means without the prior written permission of Fairview Estates (Housing) Ltd. except as expressly permitted by law. The doing of any unauthorised act in relation to them may result in both a civil claim and criminal prosecution.

© john pardey architects

cad file:

Key

NOTE:
SECTIONS SUBJECT TO DETAILED
CONSTRUCTION DRAWINGS

rev	date	initials	description
-----	------	----------	-------------

drawing:
TYPICAL DETAILS

project:
LAWN ROAD, BELSIZE PARK

drawing no: 1406-610

revision: -

status:
PLANNING

scale @ A1: 1:25

date: DEC 2014

Fairview
NEW HOMES Ltd.

jpa

john pardey architects
Beck Farm Studio St Leonards Road
East End Lymington Hampshire SO41 5SR
www.johnpardeyarchitects.com 01590 626465

0 1 2 5m