

Proposed Drawings

No. 374

FINCHLEY ROAD

B
GS_01

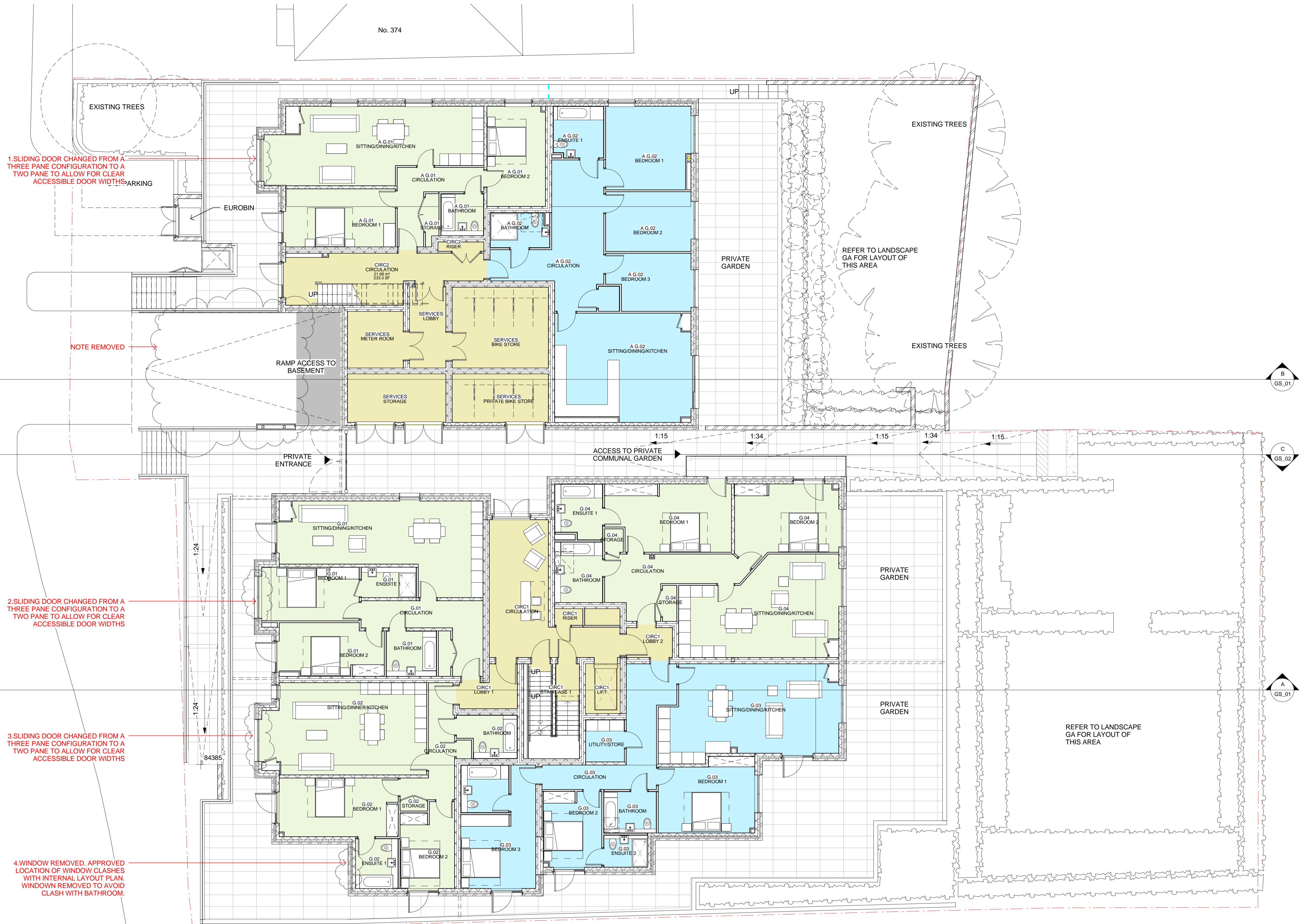
C
GS_02

A
GS_01

B
GS_01

C
GS_02

A
GS_01



1. SLIDING DOOR CHANGED FROM A THREE PANE CONFIGURATION TO A TWO PANE TO ALLOW FOR CLEAR ACCESSIBLE DOOR WIDTHS

2. SLIDING DOOR CHANGED FROM A THREE PANE CONFIGURATION TO A TWO PANE TO ALLOW FOR CLEAR ACCESSIBLE DOOR WIDTHS

3. SLIDING DOOR CHANGED FROM A THREE PANE CONFIGURATION TO A TWO PANE TO ALLOW FOR CLEAR ACCESSIBLE DOOR WIDTHS

4. WINDOW REMOVED. APPROVED LOCATION OF WINDOW CLASHES WITH INTERNAL LAYOUT PLAN. WINDOW REMOVED TO AVOID CLASH WITH BATHROOM.

NOTE REMOVED

REFER TO LANDSCAPE GA FOR LAYOUT OF THIS AREA

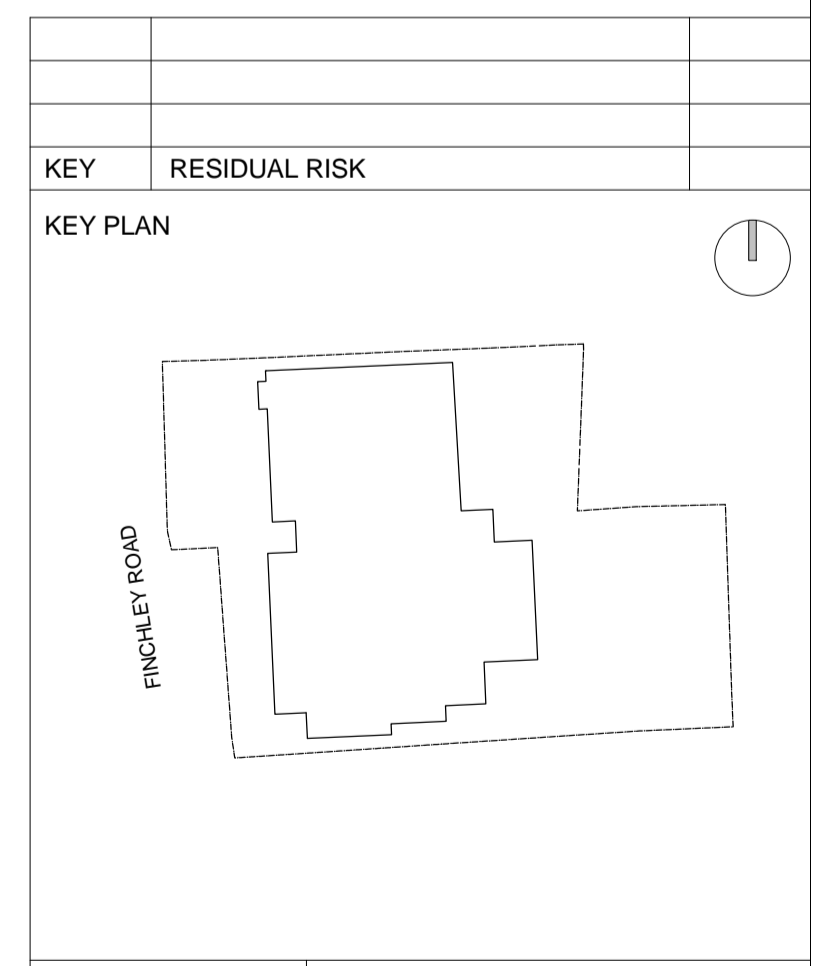
REFER TO LANDSCAPE GA FOR LAYOUT OF THIS AREA

No. 366

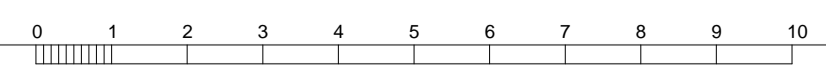
GROUND FLOOR AREA PLAN - PLANNING

1 : 100

As Proposed



ORIGINATOR davidmillerarchitects WWW.DAVID-MILLER.CO.UK	DRAWING TITLE GROUND FLOOR PLANNING DRAWING	JOB NO 282	STATUS FOR INFORMATION
JOB TITLE 368 - 372 FINCHLEY ROAD, NW3 7AJ	SCALE 1:100 @A1	DATE 12/02/14	CHECKED APPROVED AD DMA
DRAWING NUMBER: 104_GA_00		REV P6	



REVISION DETAILS		DATE	DRW	CHK
A	FIRST ISSUE COLOURED PLANS	14.08.13	DMA	ALL
B	AREA PLAN AND FURNITURE LAYOUT	16.08.13	DMA	ALL
C	FLOOR PLANS UPDATE WITH STRUCTURAL WALLS AND ROOM ADJUSTMENTS	17.08.13	DMA	ALL
D	REVISED LAYOUT WITH PRELIMINARY LOCATION OF RWP AND SVP	27.09.13	DMA	ALL
E	PLANNING ISSUE	11.02.14	DMA	ALL

As Proposed

1. WINDOW WIDTH MATCHES APPROVED DRAWING DECORATIVE FENESTRATION PATTERN TO REVEAL ADDITIONAL DRAWING FIN-DMA-ALL-01-DET-A3-433 - SPECIAL WINDOW DETAILS - WEST ELEVATION-A HAS BEEN PREPARED TO SHOW THE DETAIL TO THIS WINDOW REVEAL

2. EXTERNAL GLAZED DOOR CHANGED FROM HINGED DOORS TO SLIDING TO ACHIEVE MORE SPACE ON BALCONY
SLIDING DOOR CHANGED FROM A THREE PANE CONFIGURATION TO A TWO PANE TO ALLOW FOR CLEAR ACCESSIBLE DOOR WIDTHS

3. WINDOW WIDTH MATCHES APPROVED DRAWING ADDITIONAL DRAWING FIN-DMA-ALL-01-DET-A3-433 - SPECIAL WINDOW DETAILS - WEST ELEVATION-A HAS BEEN PREPARED TO SHOW THE DETAIL TO THIS WINDOW REVEAL

4. WINDOW WIDTH MATCHES APPROVED DRAWING ADDITIONAL DRAWING FIN-DMA-ALL-01-DET-A3-433 - SPECIAL WINDOW DETAILS - WEST ELEVATION-A HAS BEEN PREPARED TO SHOW THE DETAIL TO THIS WINDOW REVEAL

5. WINDOW WIDTH MATCHES APPROVED DRAWING ADDITIONAL DRAWING FIN-DMA-ALL-01-DET-A3-433 - SPECIAL WINDOW DETAILS - WEST ELEVATION-A HAS BEEN PREPARED TO SHOW THE DETAIL TO THIS WINDOW REVEAL

6. EXTERNAL GLAZED DOOR CHANGED FROM HINGED DOORS TO SLIDING TO ACHIEVE MORE SPACE ON BALCONY
SLIDING DOOR CHANGED FROM A THREE PANE CONFIGURATION TO A TWO PANE TO ALLOW FOR CLEAR ACCESSIBLE DOOR WIDTHS

7. CIRCULATION RECONFIGURED FOR FIRE PRECAUTION MEASURES. ADDITIONAL LOBBIES NEEDED FOR FIRE ESCAPE PURPOSES

8. EXTERNAL GLAZED DOOR CHANGED FROM HINGED DOORS TO SLIDING TO ACHIEVE MORE SPACE ON BALCONY
SLIDING DOOR CHANGED FROM A THREE PANE CONFIGURATION TO A TWO PANE TO ALLOW FOR CLEAR ACCESSIBLE DOOR WIDTHS

9. EXTERNAL GLAZED DOOR CHANGED FROM HINGED DOORS TO SLIDING TO ACHIEVE MORE SPACE ON BALCONY
SLIDING DOOR CHANGED FROM A THREE PANE CONFIGURATION TO A TWO PANE TO ALLOW FOR CLEAR ACCESSIBLE DOOR WIDTHS

10. WINDOW REMOVED AS NOT REQUIRED INTERNALLY

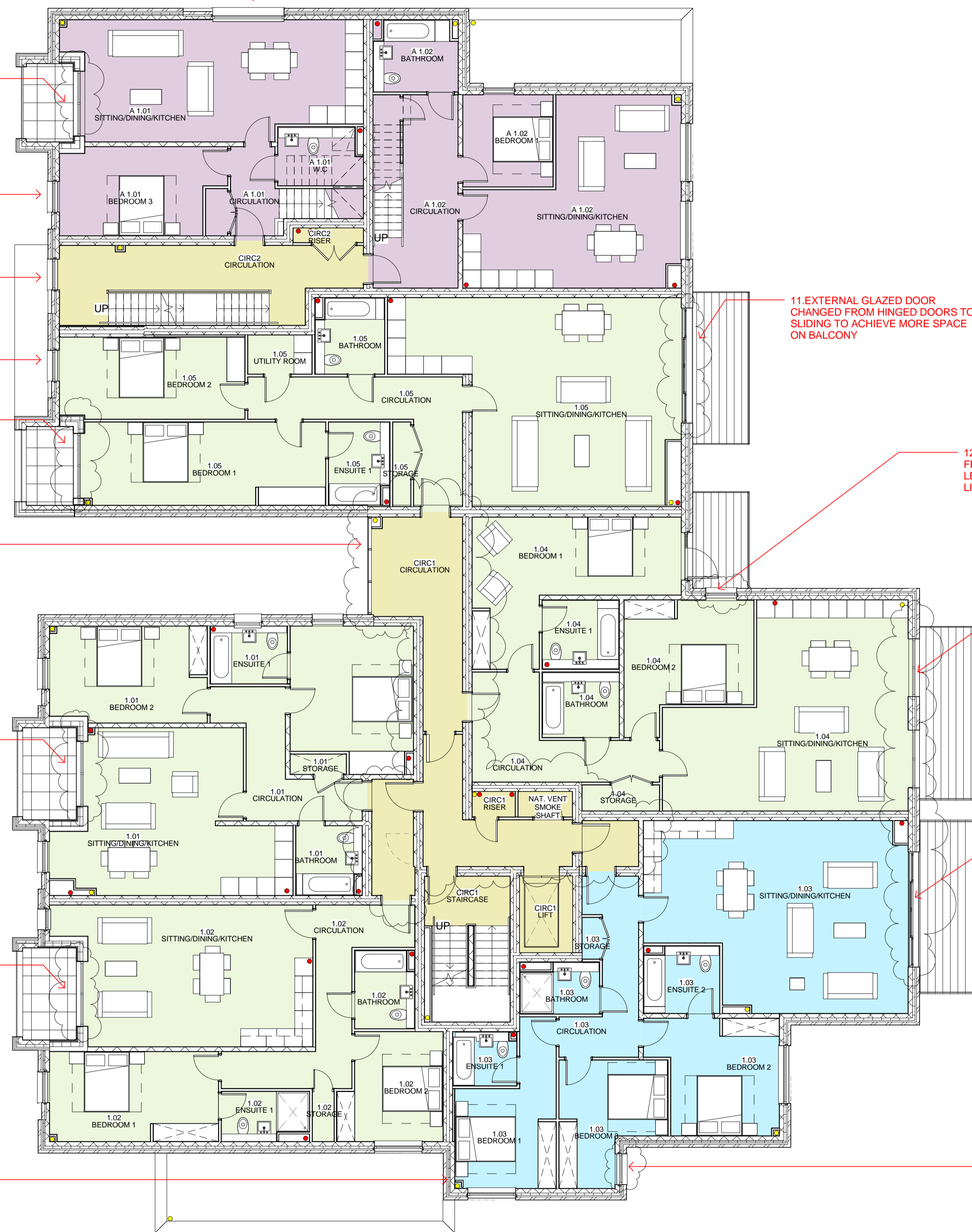
11. EXTERNAL GLAZED DOOR CHANGED FROM HINGED DOORS TO SLIDING TO ACHIEVE MORE SPACE ON BALCONY

12. BEDROOM WINDOW ENLARGED FROM HIGH LEVEL WINDOW TO FULL LENGTH WINDOW TO ALLOW MORE LIGHT INTO BEDROOM SPACE

13. EXTERNAL GLAZED DOOR CHANGED FROM HINGED DOORS TO SLIDING TO ACHIEVE MORE SPACE ON BALCONY

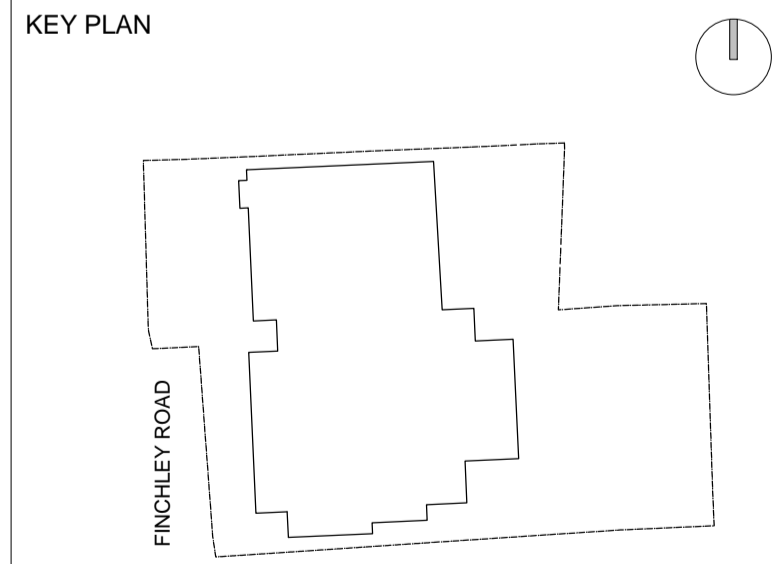
14. EXTERNAL GLAZED DOOR CHANGED FROM HINGED DOORS TO SLIDING TO ACHIEVE MORE SPACE ON BALCONY

15. WINDOW CENTRAL TRANSOM REMOVED TO BE INKEEPING WITH THE FACADE - TO KEEP THE WINDOW PANES CONSISTENT AS THIS DOES NOT REFLECT ELSE WHERE ON THE ELEVATION THROUGHOUT THE DESIGN



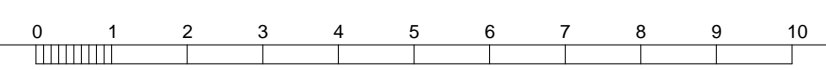
DRAWING NOTE
COLOURED PLANS TO BE READ WITH AREA SCHEDULE DMA-125 - ROOM AREA SCHEDULE

KEY RESIDUAL RISK



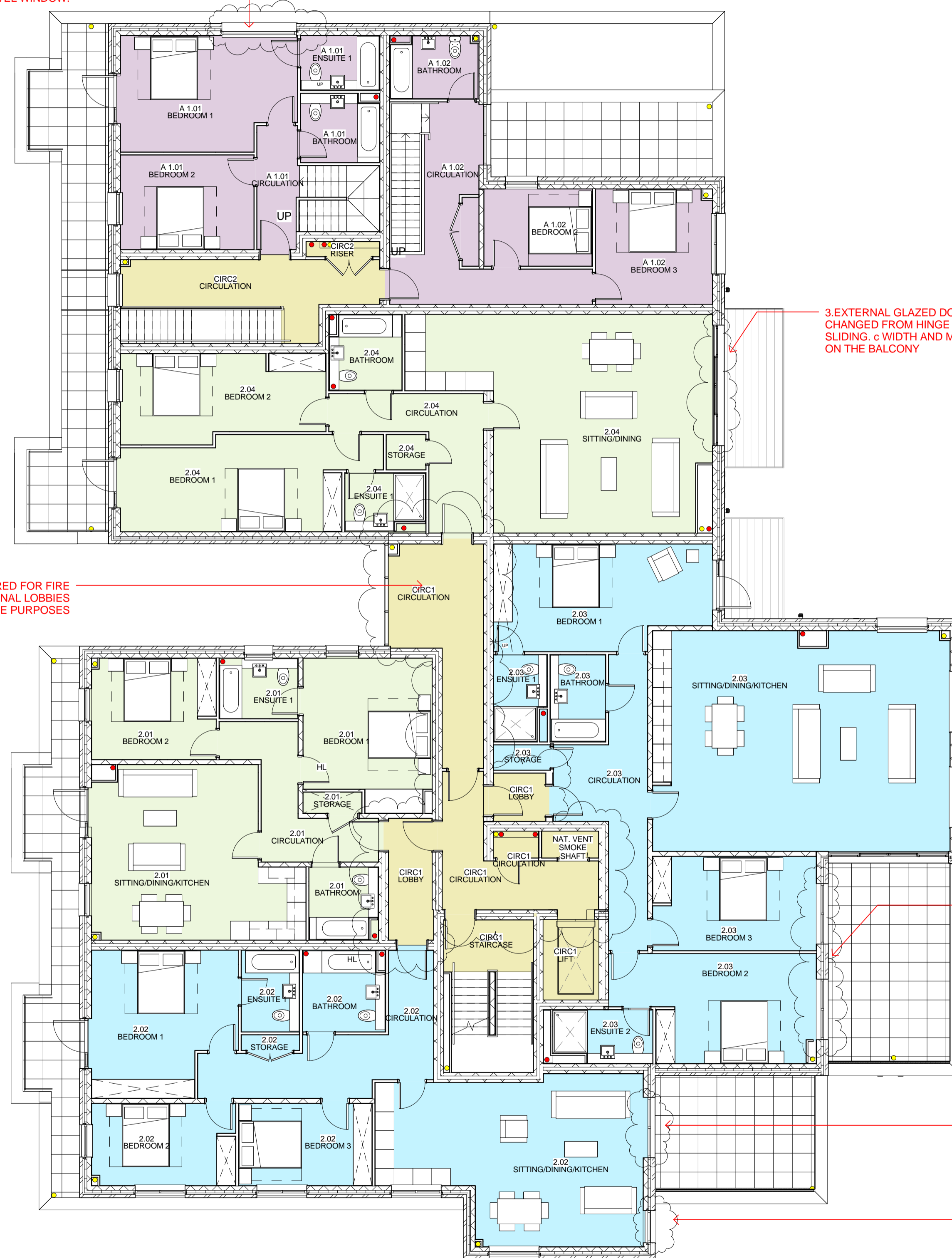
1 FIRST FLOOR AREA PLAN

ORIGINATOR davidmillerarchitects WWW.DAVID-MILLER.CO.UK		DRAWING TITLE FIRST FLOOR AREA PLAN	
JOB TITLE 368 - 372 FINCHLEY ROAD, NW3 7AJ	JOB NO 282	STATUS FOR INFORMATION	
SCALE 1:100	DATE 08/12/13	CHECKED @A1	APPROVED DMA
PROJECT	ORIGIN	ZONE	LEVEL
FIN	DMA	ALL	01
TYPE	ROLE	SEQ NO	REV
GA	A3	122	E



REVISION DETAILS		DATE	DRW	CHK
A	FIRST ISSUE COLOURED PLANS	14.08.13	DMA	ALL
B	AREA PLAN AND FURNITURE LAYOUT	16.08.13	DMA	ALL
C	FLOOR PLANS UPDATE WITH STRUCTURAL WALLS AND ROOM ADJUSTMENTS	17.09.13	DMA	ALL
D	REVISED LAYOUT WITH PRELIMINARY LOCATION OF RWP AND SVP	27.09.13	DMA	ALL
E	PLANNING ISSUE	11.02.14	DMA	ALL

1. WINDOW CHANGED FROM TWO HIGH LEVEL WINDOWS TO ONE LARGE HIGH LEVEL WINDOW TO MATCH APPROVED ELEVATION - REF: APPROVED DRAWING: 104_GA_02_P2 SECOND FLOOR ONLY SHOWS TWO WINDOWS AND NOT AS PER 104_GE_01_P3 ELEVATIONS THAT SHOWS ONLY ONE LARGE HIGH LEVEL WINDOW.



2. CIRCULATION RECONFIGURED FOR FIRE PRECAUTION MEASURES. ADDITIONAL LOBBIES NEEDED FOR FIRE ESCAPE PURPOSES

3. EXTERNAL GLAZED DOOR CHANGED FROM HINGE DOORS TO SLIDING. c WIDTH AND MORE SPACE ON THE BALCONY

4. EXTERNAL GLAZED DOOR CHANGED FROM HINGED DOORS TO SLIDING. TO ALLOW FOR CLEAR ACCESSIBLE DOOR

5. UNIT CHANGED FROM A QUADRUPLE PANE DOOR TO A DOUBLE SLIDING DOOR. EXTERNAL GLAZED DOOR CHANGED FROM HINGED DOORS TO SLIDING TO FIT WITHIN INTERNAL LAYOUT

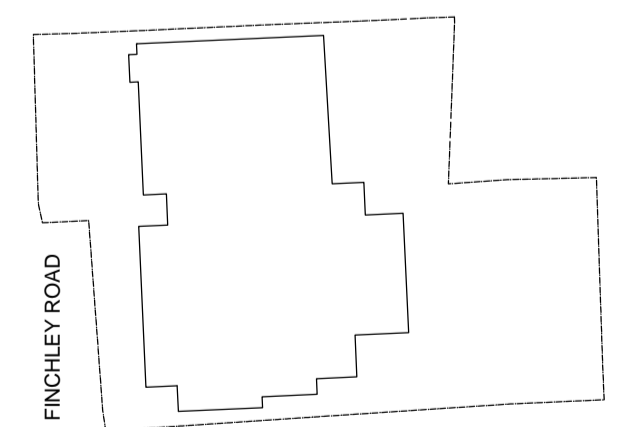
6. WINDOW CENTRAL TRANSOM REMOVED TO BE INKEEPING WITH THE FACADE - TO KEEP THE WINDOW PANES CONSISTENT AS THIS DOES NOT REFLECT ELSE WHERE ON THE ELEVATION THROUGHOUT THE DESIGN

As Proposed

DRAWING NOTE
COLOURED PLANS TO BE READ WITH AREA SCHEDULE DMA-125 - ROOM AREA SCHEDULE

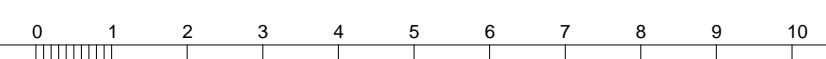
KEY RESIDUAL RISK

KEY PLAN



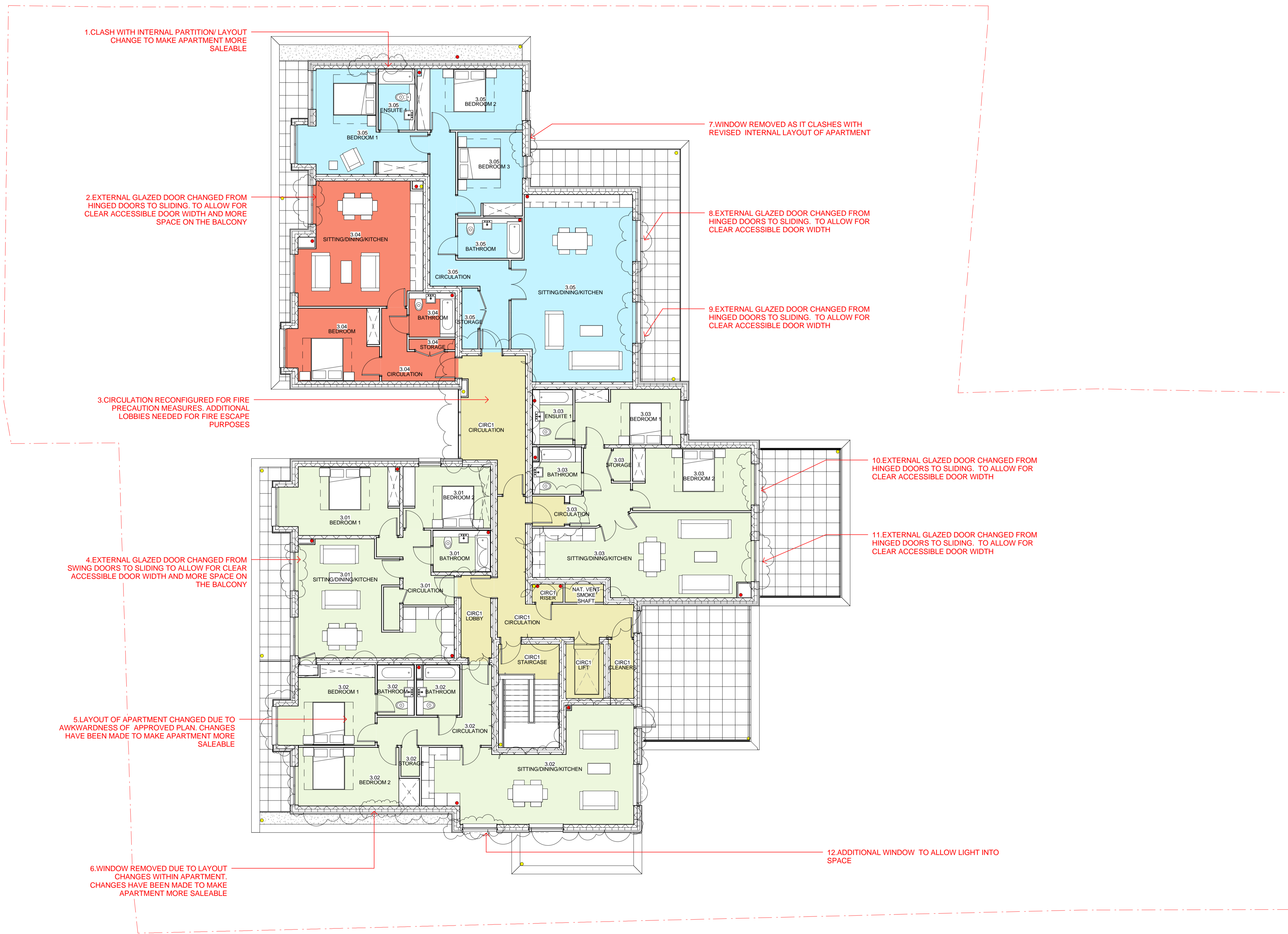
ORIGINATOR davidmillerarchitects WWW.DAVID-MILLER.CO.UK		DRAWING TITLE SECOND FLOOR AREA PLAN	
JOB TITLE 368 - 372 FINCHLEY ROAD, NW3 7AJ	JOB NO 282	STATUS FOR INFORMATION	
SCALE 1:100	@A1	DATE 08/12/13	CHECKED / APPROVED AD / DMA
PROJECT	ORIGIN	ZONE	LEVEL
FIN	DMA	ALL	02
			GA
			A3
			123
			E

1 SECOND FLOOR AREA PLAN



REVISION DETAILS	DATE	DRW	CHK
A FIRST ISSUE COLOURED PLANS	14.08.13	DMA	ALL
B AREA PLAN AND FURNITURE LAYOUT	16.08.13	DMA	ALL
C FLOOR PLANS UPDATE WITH STRUCTURAL WALLS AND ROOM ADJUSTMENTS	17.09.13	DMA	ALL
D REVISED LAYOUT WITH PRELIMINARY LOCATION OF RWP AND SWP	27.09.13	DMA	ALL
E PLANNING ISSUE	11.02.14	DMA	ALL

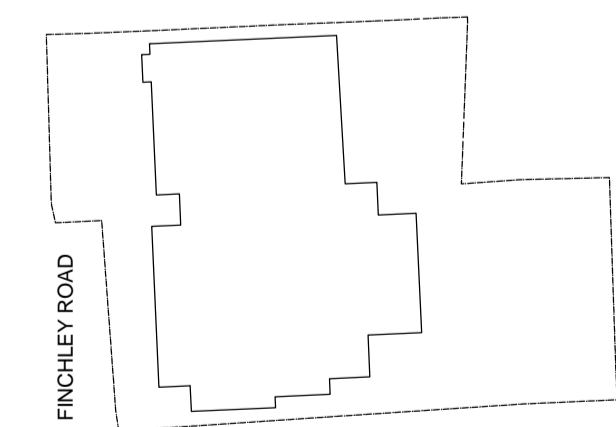
As Proposed



DRAWING NOTE
COLOURED PLANS TO BE READ WITH AREA SCHEDULE
DMA-125 - ROOM AREA SCHEDULE

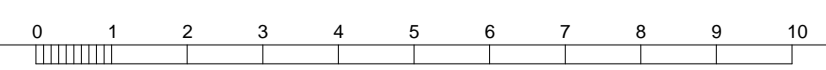
KEY RESIDUAL RISK

KEY PLAN

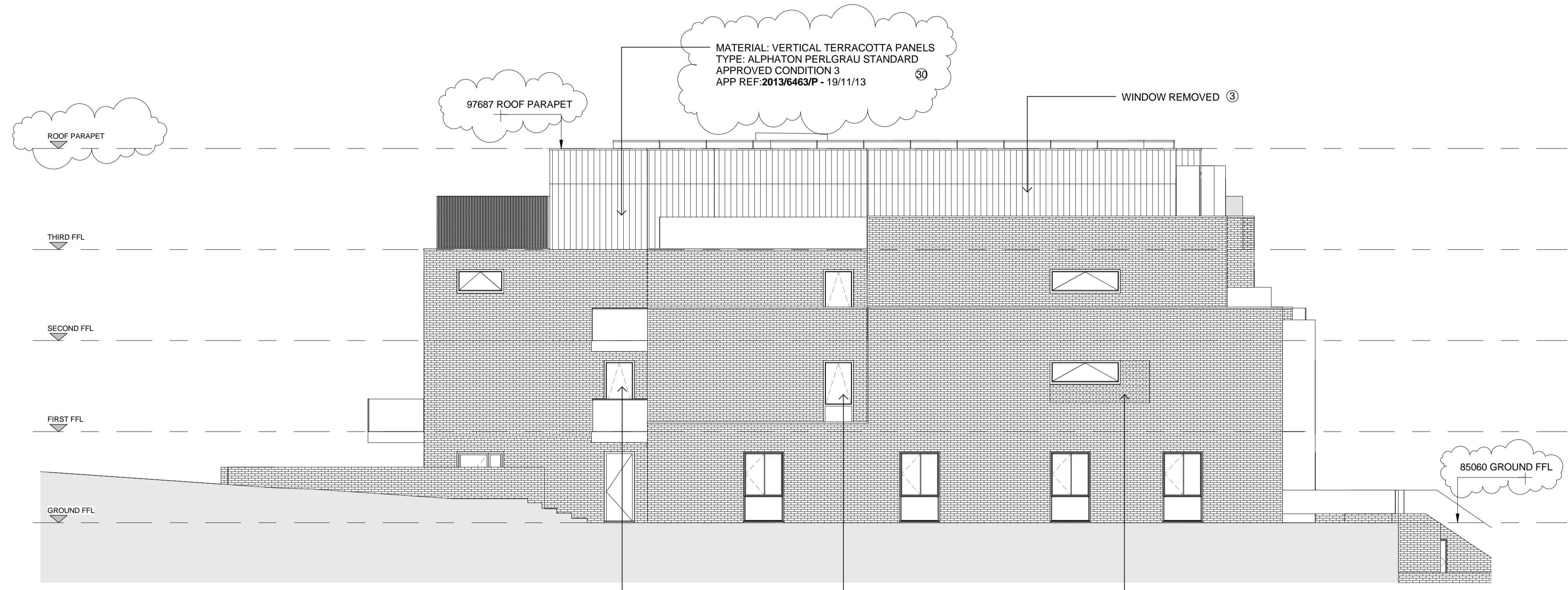


1 THIRD FLOOR AREA PLAN

ORIGINATOR davidmillerarchitects WWW.DAVID-MILLER.CO.UK		DRAWING TITLE THIRD FLOOR AREA PLAN	
JOB TITLE 368 - 372 FINCHLEY ROAD, NW3 7AJ	JOB NO 282	STATUS FOR INFORMATION	
SCALE 1:100	DATE 14/08/13	CHECKED @A1	APPROVED DMA
PROJECT	ORIGIN	ZONE	LEVEL
FIN	DMA	ALL	03
TYPE	ROLE	SEQ NO	REV
GA	A3	124	E



REVISION DETAILS		DATE	DRW	CHK
A	ELEVATION FIRST ISSUE	23.08.13	DMA	ALL
B	GRID LINES AND LEVEL ADDED TO ELEVATION. ADJUSTMENTS TO WINDOW HEIGHTS MADE	17.09.13	DMA	ALL
C	ELEVATION REVISED WITH CHANGES TO APARTMENT SPACES	27.09.13	DMA	ALL
D	ADDITIONAL PLANNING DOCUMENTATION	23.10.13	DMA	ALL
E	FLUES AND VENTS ADDED	10.01.14	DMA	ALL
F	PLANNING ISSUE	11.02.14	DMA	ALL
G	FOR REVISED SECTION 73 APPLICATION	27.10.14	DMA	ALL



1 NORTH ELEVATION

REVISED WINDOW LOCATIONS PROPOSED TO PREVENT CLASH WITH INTERNAL WALLS AND BALCONY EDGE ①

WINDOW BOTTOM PANE ADDED TO ALLOW MORE LIGHT INTO THE BEDROOM. IN KEEPING WITH THE REST OF THE DESIGN. ②

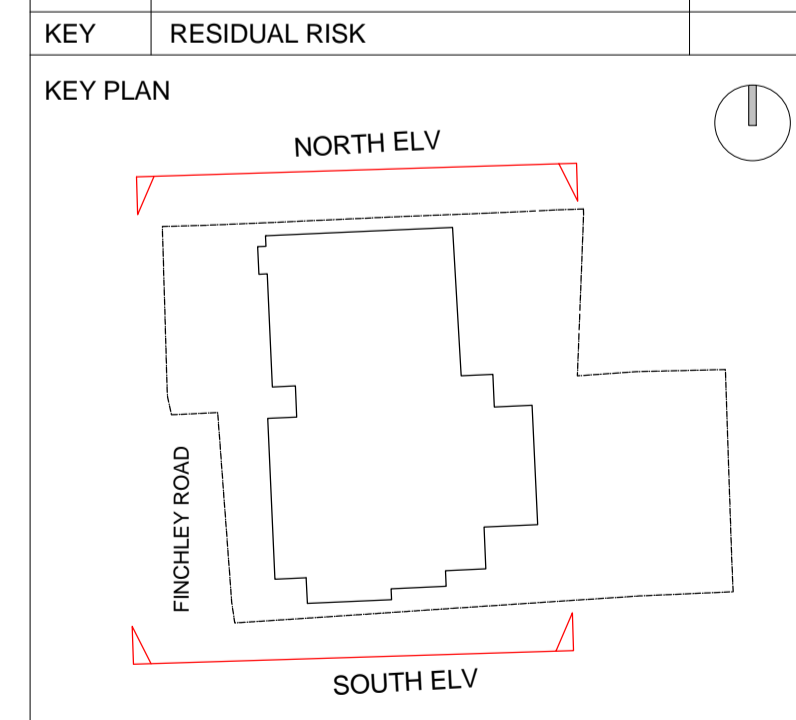
WINDOW WIDTH MATCHES APPROVED DRAWING WINDOW REVEAL - DECRACTIVE FENESTRATION PATTERN TO REVEAL. ADDITIONAL DRAWING FIN-DMA-ALL-01-DET-A3-434 - SPECIAL WINDOW DETAILS - NORTH ELEVATION HAS BEEN PREPARED TO SHOW THE DETAIL TO THIS WINDOW REVEAL. ④

KEY

	BRICK APPROVED WIENERBERGER OLDE CHESHIRE RED MULTI
	TERRACOTTA RAIN SCREEN VERTICALLY ALIGNED CLADDING JAMES AND TAYLOR - ALPHATON PERLGRAU STANDARD
	NATURAL STONE CLADDING MOLEANOS STONE CLADDING
	WINDOW/DOOR FRAME RAL 7039 MATT

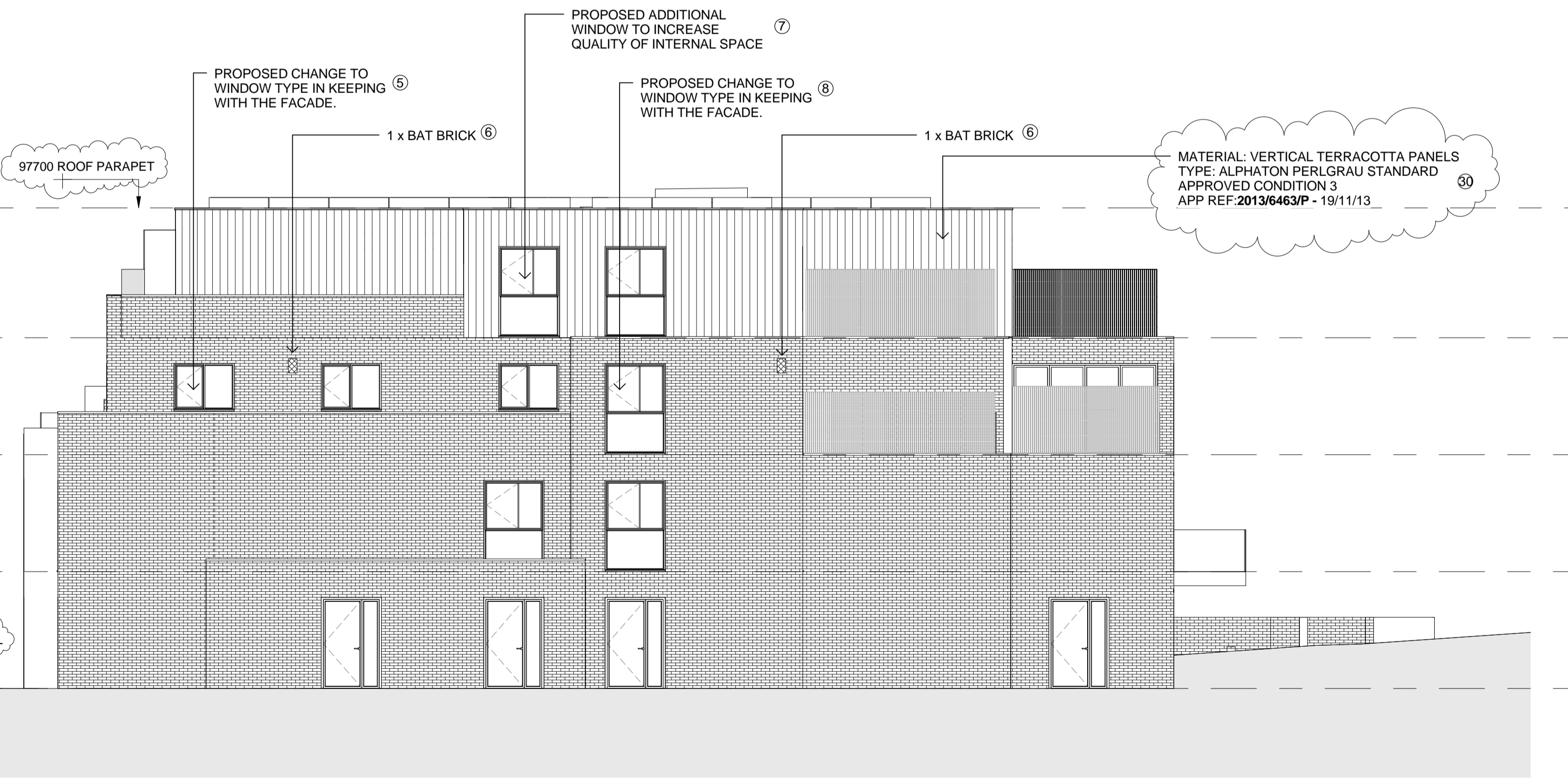
NOTE:
ALL DOORS AND WINDOWS ARE 2.4m FROM FFL AS PER THE APPROVED PLANNING ELEVATIONS 104_GE_01 P3. (MEASUREMENTS FROM APPROVED PLANNING ELEVATIONS SCALED MANUALLY FROM DRAWING)
ADDITIONAL 75 mm FLOOR BUILDUP TO ACHIEVE LEVEL ACCESS TO TERRACES AND TO ACHIEVE CORRECT ACOUSTIC, FIRE AND INSULATION APPLIES TO FIRST FLOOR, SECOND FLOOR AND THIRD FLOOR. = TOTAL 225mm
ADDITIONAL 215 mm TO ROOF PARAPET TO ALLOW FOR INSULATION AND GREEN ROOF
TOTAL HEIGHT IN ADDITION TO APPROVED BUILDING HEIGHT = 440mm (225 + 215mm)

As Proposed



ORIGINATOR davidmillerarchitects WWW.DAVID-MILLER.CO.UK		DRAWING TITLE PROPOSED ELEVATION SHEET 1					
JOB TITLE 368 - 372 FINCHLEY ROAD, NW3 7AJ	JOB NO 282	STATUS FOR INFORMATION					
SCALE 1:100	DATE 20/08/13	CHECKED AD	APPROVED DMA				
PROJECT	ORIGIN	ZONE	LEVEL	TYPE	ROLE	SEQ NO	REV
FIN	DMA	ALL	SL	ELV	A3	207	G

2 SOUTH ELEVATION



PROPOSED CHANGE TO WINDOW TYPE IN KEEPING WITH THE FACADE. ⑤

PROPOSED ADDITIONAL WINDOW TO INCREASE QUALITY OF INTERNAL SPACE ⑦

PROPOSED CHANGE TO WINDOW TYPE IN KEEPING WITH THE FACADE. ⑧

MATERIAL: VERTICAL TERRACOTTA PANELS TYPE: ALPHATON PERLGRAU STANDARD APPROVED CONDITION 3 APP REF: 2013/6463/P - 19/11/13 ③

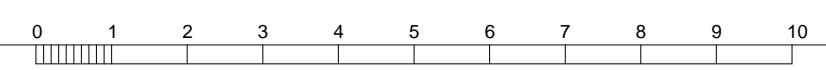
1 x BAT BRICK ⑥

1 x BAT BRICK ⑥

1 x BAT BRICK ⑥

1 x BAT BRICK ⑥

1 x BAT BRICK ⑥



REVISION DETAILS		DATE	DRW	CHK
A	ELEVATION FIRST ISSUE	23.08.13	DMA	ALL
B	GRID LINES AND LEVEL ADDED TO ELEVATION. ADJUSTMENTS TO WINDOW HEIGHTS MADE	17.09.13	DMA	ALL
C	ELEVATION REVISED WITH CHANGES TO APARTMENT SPACES	27.09.13	DMA	ALL
D	ADDITIONAL PLANNING DOCUMENTATION	23.10.13	DMA	ALL
E	FLUES AND VENTS ADDED	10.01.14	DMA	ALL
F	PLANNING ISSUE	11.02.14	DMA	ALL
G	FOR REVISED SECTION 73 APPLICATION	27.10.14	DMA	ALL



1 EAST ELEVATION

KEY

	BRICK APPROVED WIENERBERGER OLDE CHESHIRE RED MULTI
	TERRACOTTA RAIN SCREEN VERTICALLY ALIGNED CLADDING JAMES AND TAYLOR - ALPHATON PERLGRAU STANDARD
	NATURAL STONE CLADDING MOLEANOS STONE CLADDING
WINDOW/DOOR FRAME RAL 7039 MATT	

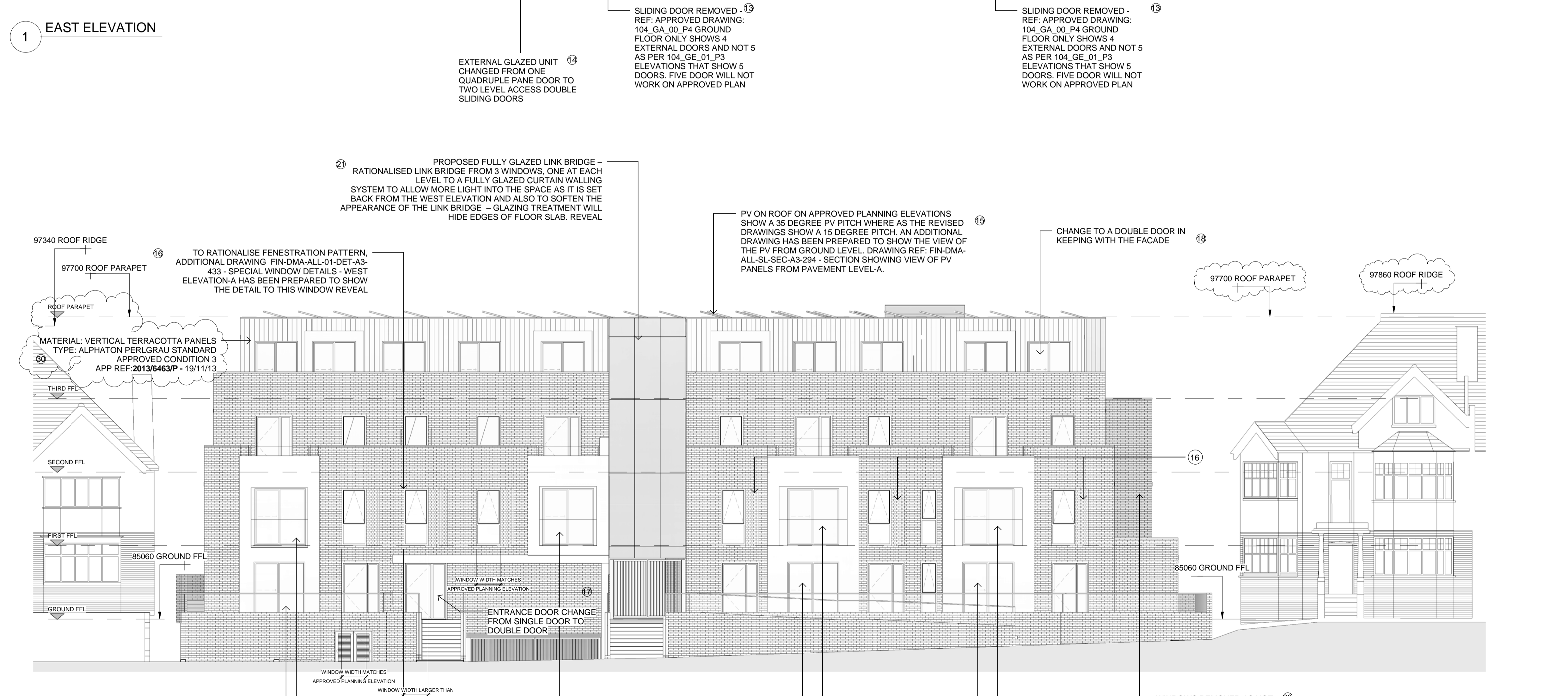
NOTE:
ALL DOORS AND WINDOWS ARE 2.4m FROM FFL AS PER THE APPROVED PLANNING ELEVATIONS 104_GE_01_P3. (MEASUREMENTS FROM APPROVED PLANNING ELEVATIONS SCALED MANUALLY FROM DRAWING)

ADDITIONAL 75 mm FLOOR BUILDUP TO ACHIEVE LEVEL ACCESS TO TERRACES AND TO ACHIEVE CORRECT ACOUSTIC, FIRE AND INSULATION APPLIES TO FIRST FLOOR, SECOND FLOOR AND THIRD FLOOR. = TOTAL 225mm

ADDITIONAL 215 mm TO ROOF PARAPET TO ALLOW FOR INSULATION AND GREEN ROOF

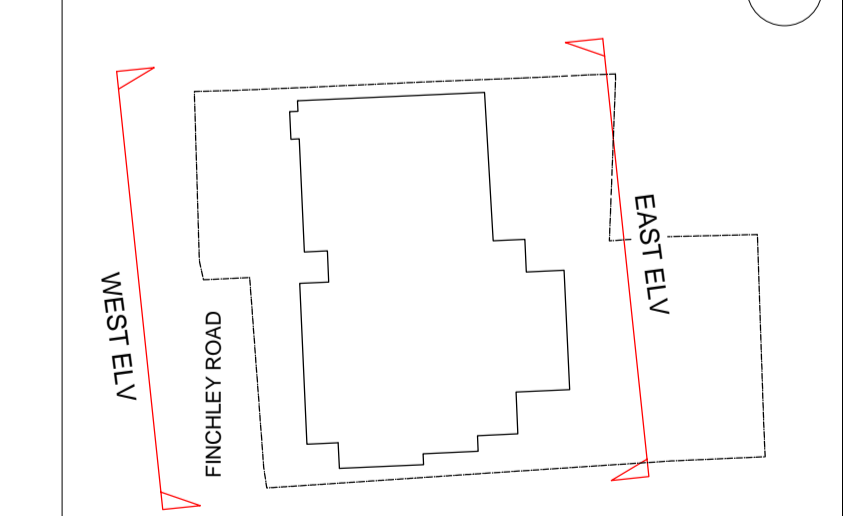
TOTAL HEIGHT IN ADDITION TO APPROVED BUILDING HEIGHT = 440mm (225 + 215mm)

As Proposed

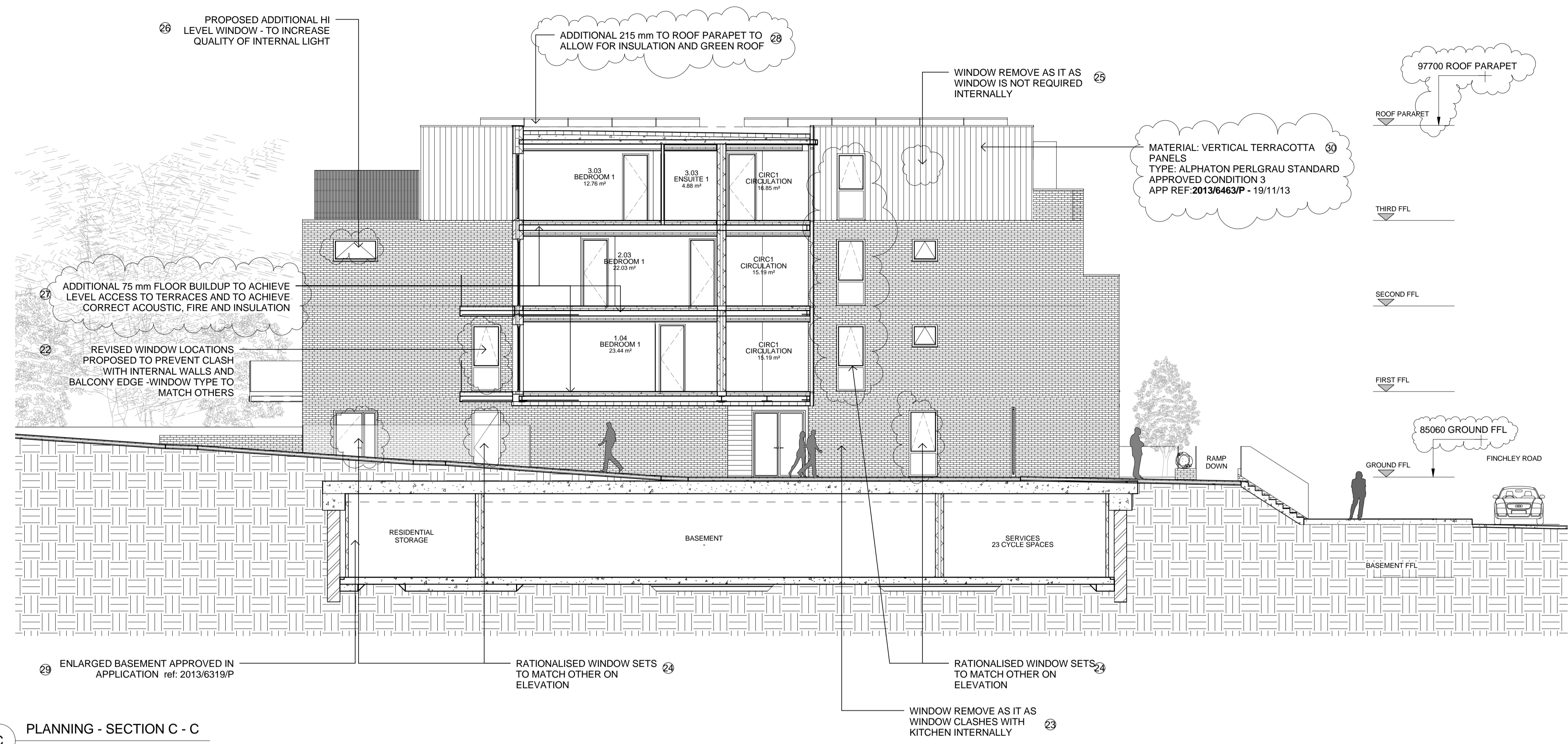


2 WEST ELEVATION

KEY RESIDUAL RISK



ORIGINATOR davidmillerarchitects WWW.DAVID-MILLER.CO.UK	DRAWING TITLE PROPOSED ELEVATION SHEET 2
JOB TITLE 368 - 372 FINCHLEY ROAD, NW3 7AJ	JOB NO 282
SCALE 1:100 @A1	STATUS FOR INFORMATION
DATE 20/08/13	CHECKED AD
PROJECT	REV
FIN	G



KEY

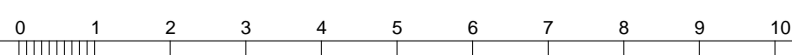
	BRICK APPROVED WIENERBERGER OLDE CHESHIRE RED MULTI
	TERRACOTTA RAIN SCREEN VERTICALLY ALIGNED CLADDING JAMES AND TAYLOR - ALPHATON PERLGRAU STANDARD
	NATURAL STONE CLADDING MOLEANOS STONE CLADDING
	WINDOW/DOOR FRAME RAL 7039 MATT

NOTE:
 ALL DOORS AND WINDOWS ARE 2.4m FROM FFL AS PER THE APPROVED PLANNING ELEVATIONS 104 GE_01 P3. (MEASUREMENTS FROM APPROVED PLANNING ELEVATIONS SCALED MANUALLY FROM DRAWING)
 ADDITIONAL 75 mm FLOOR BUILDUP TO ACHIEVE LEVEL ACCESS TO TERRACES AND TO ACHIEVE CORRECT ACOUSTIC, FIRE AND INSULATION APPLIES TO FIRST FLOOR, SECOND FLOOR AND THIRD FLOOR. = TOTAL 225mm
 ADDITIONAL 215 mm TO ROOF PARAPET TO ALLOW FOR INSULATION AND GREEN ROOF
 TOTAL HEIGHT IN ADDITION TO APPROVED BUILDING HEIGHT = 440mm (225 + 215mm)

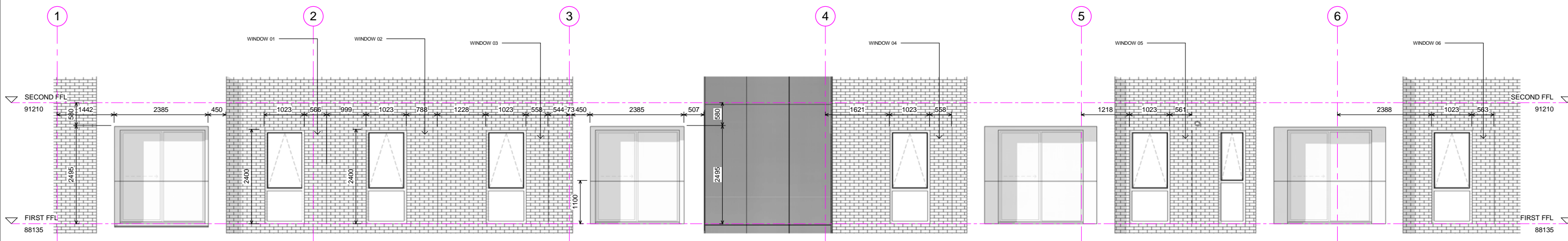
As Proposed

C PLANNING - SECTION C - C
 1 : 100

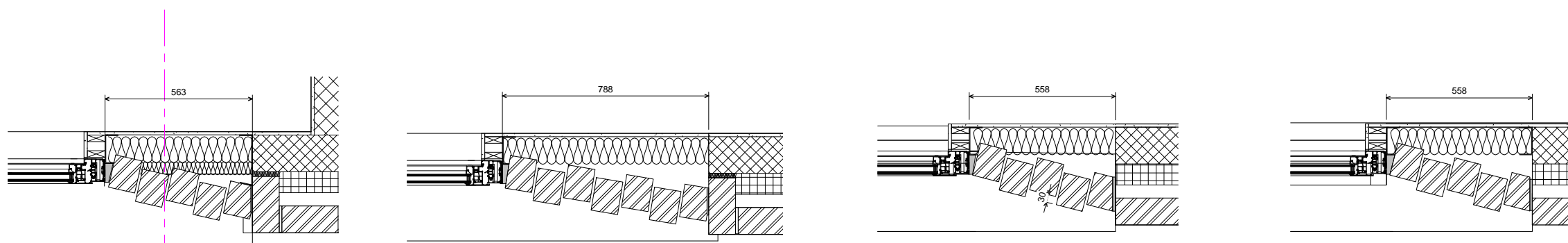
KEY PLAN			
RESIDUAL RISK			
ORIGINATOR	DRAWING TITLE		
clavimilleraarchitects WWW.DAVID-MILLER.CO.UK	PROPOSED SECTIONS		
JOB TITLE	JOB NO	STATUS	
368 - 372 FINCHLEY ROAD, NW3 7AJ	282	FOR INFORMATION	
SCALE	DATE	CHECKED	APPROVED
1:100 @A1	13/02/14	AD	DMA
DRAWING NUMBER:		REV	
104_GS_02		P5	



FIRST FLOOR WEST ELEVATION



E WINDOW DET WEST ELEVATION
1 : 50

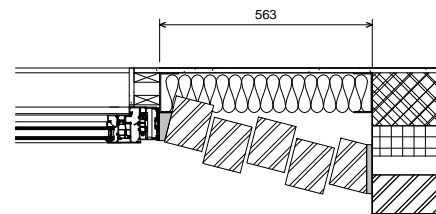
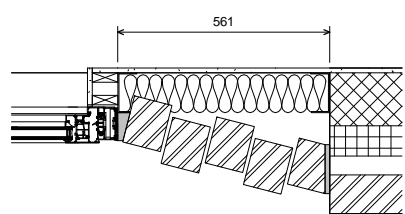


1 WINDOW 01
1 : 10

2 WINDOW 02
1 : 10

3 WINDOW 03
1 : 10

4 WINDOW 04
1 : 10

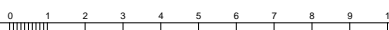


5 WINDOW 05
1 : 10

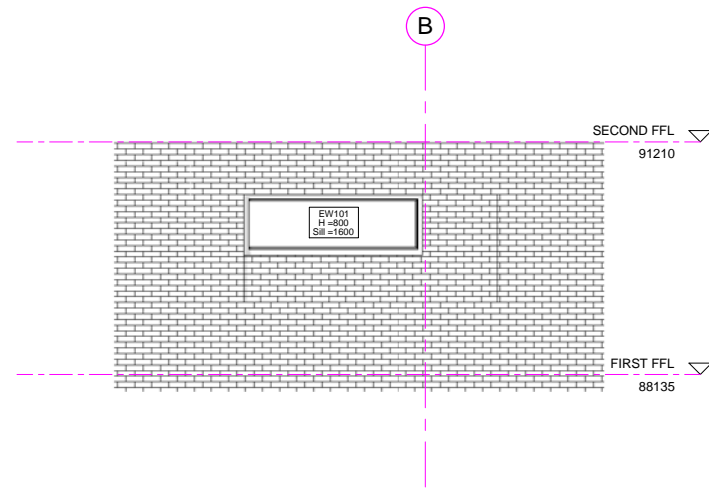
6 WINDOW 06
1 : 10

As Proposed

KEY PLAN							
ORIGINATOR	DRAWING TITLE						
DAVID MILLER ARCHITECTS WWW.DAVID-MILLER.CO.UK	SPECIAL WINDOW DETAILS - WEST ELEVATION						
JOB TITLE	JOB NO	STATUS					
368 - 372 FINCHLEY ROAD, NW3 7AJ	282	FOR INFORMATION					
SCALE	DATE	CHECKED	APPROVED				
As indicated A1	25/03/14	AD	DMA				
PROJECT	ORIGIN	ZONE	LEVEL	TYPE	ROLE	SEQ NO	REV
FIN	DMA	ALL	01	DET	A3	433	A

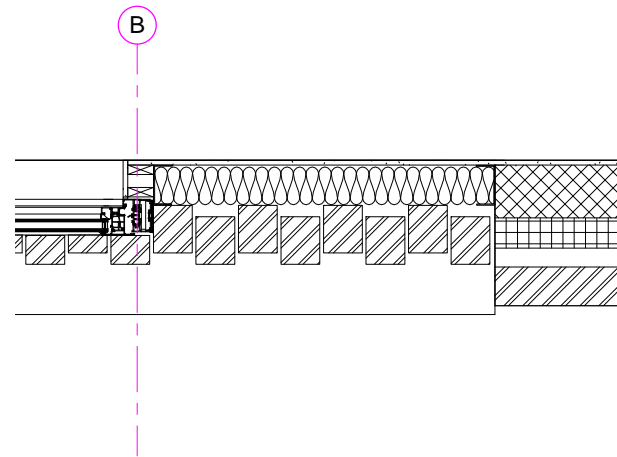


FIRST FLOOR NORTH ELEVATION



1 WINDOW DET NORTH ELEVATION
1 : 50

As Proposed



2 WINDOW 07
1 : 10

KEY		RESIDUAL RISK
KEY PLAN		
ORIGINATOR	DRAWING TITLE	
davidmillerarchitects WWW.DAVID-MILLER.CO.UK	SPECIAL WINDOW DETAILS - NORTH ELEVATION	
JOB TITLE	JOB NO	STATUS
368 - 372 FINCHLEY ROAD, NW3 7AJ	282	FOR INFORMATION
SCALE	DATE	CHECKED APPROVED
As indicated A1	03/12/14	Checker Approver
PROJECT	ORIGIN	ZONE
FIN	DMA	ALL
LEVEL	TYPE	ROLE
01	DET	A3
SEQ NO	REV	
434	A	

