

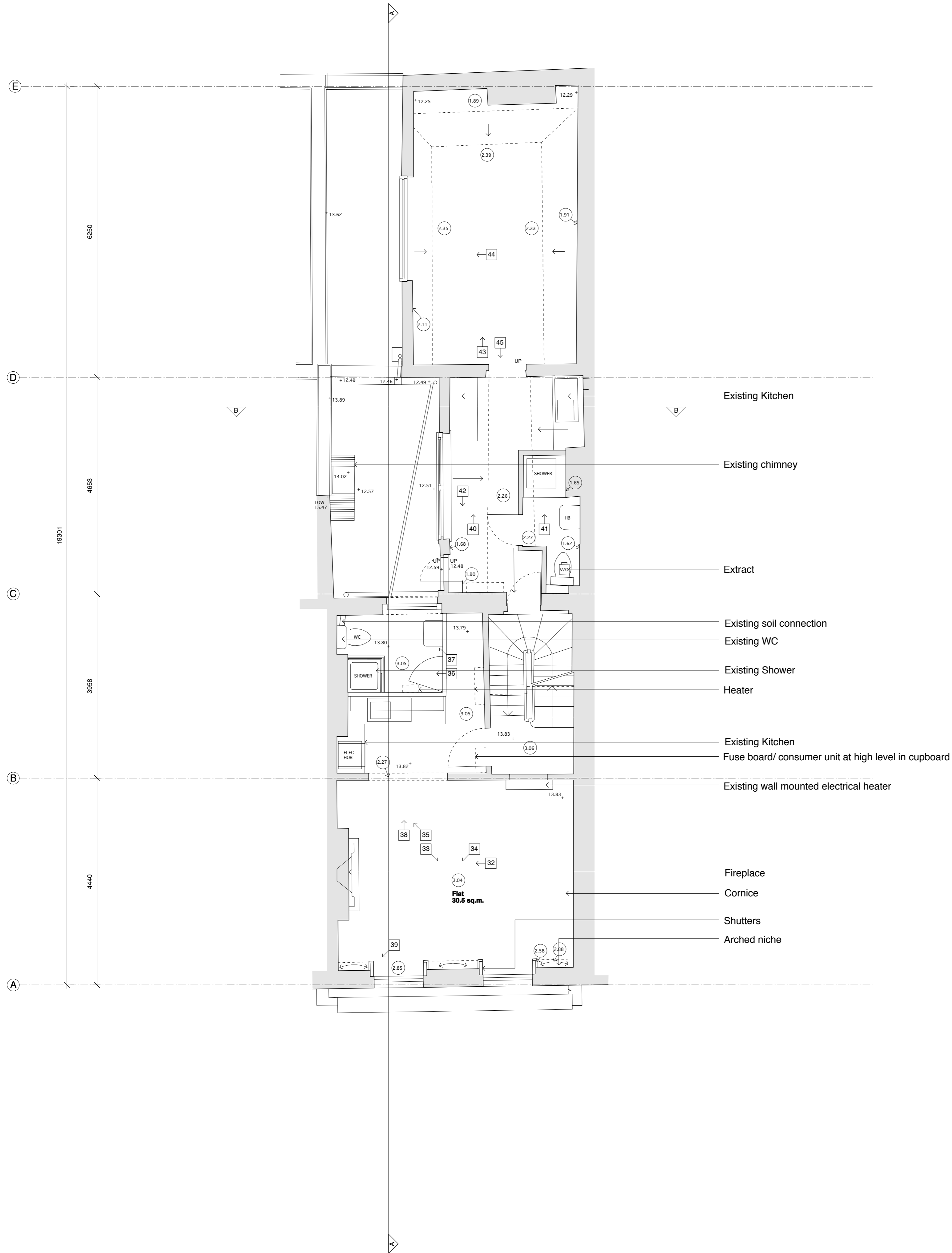
GRIDLINE A - SET OUT FROM CORNER TO RIGHT OF DOORWAY (AS LOOKED AT FROM FRONT LIGHTWELL) OF FRONT LIGHTWELL AT BASEMENT LEVEL.

GRIDLINE B - SET OUT ON CENTRE LINE OF SPINE WALL AT BASEMENT LEVEL.

GRIDLINE C - LINE OF EXTERNAL FACE OF REAR WALL OF MAIN HOUSE AT BASEMENT LEVEL.

GRIDLINE D - LINE OF EXTERNAL CORNER OF EXISTING REAR OUTBUILDING AT BASEMENT LEVEL.

GRIDLINE E - LINE OF INNER FACE OF REAR WALL TO LIGHTWELL AT BASEMENT LEVEL.



FIRST FLOOR PLAN

© 2013 syte architects limited  
 Check all dimensions on site prior to commencement of the work.  
 The quantity and/or the quality of the materials may vary from the quantities and/or the quality of the materials shown on the drawings. Drawing is copyright and may not be reproduced without the written consent of syte architects limited.

**PLANNING ISSUE**

revisions  
 A - 17.05.13  
 Revised to Planning Issue  
 B - 20.07.13  
 Position of section lines amended to match proposed drawings.

**syte**  
 80-84 Newark Street London W1F 8TS T: 020 7704 8202 F: 020 7704 8201

client  
 Ian Pirie  
 project

6 Leigh Street  
 London  
 WC1H 9EW

drawing title  
**First Floor Plan  
 As Existing**

date	drawn by	revision
Jan 13	RW	B
scale	checked by	drawing
1:50@A1		
1:100@A3 RW		205.102

