

Adapted to RoHS directive

| Item   |   | Model       | SCM125ZJ-S1   |   |    |
|--|---|-------------|---|---|----|
| Cooling capacity (1)                         |   | W           | 12500 (1800 (Min.)~14000 (Max.))  |   |    |
| Heating capacity (1)                         |   | W           | 13500 (1500 (Min.)~14000 (Max.))  |   |    |
| Power supply                                 |   |             | 1 Phase, 220~240 V, 50Hz  |   |    |
| Operation data (1)                           | Power consumption   | Cooling     | kW  | 3.90 (0.65~4.80)  |    |
|  |   | Heating     |   | 3.25 (0.70~3.42)  |    |
|  | Running current   | Cooling     | A   | 17.7 / 17.0 / 16.3 (220 / 230 / 240 V)                              |    |
|  |   | Heating     |   | 14.8 / 14.1 / 13.6 (220 / 230 / 240 V)                              |    |
|  | Inrush current  |             |   | 17.7 / 17.0 / 16.3 (220 / 230 / 240 V)                              |    |
|  | Max current (6)   |             |   | 29  |    |
|  | COP   | Cooling     |   | 3.21  |    |
|  |   | Heating     |   | 4.15  |    |
|  | Noise level   | Cooling     | Sound level   | dB (A)  | 57 |
|  |   |             | Power level   | dB  | 69 |
| Heating                                      |   | Sound level | dB (A)  | 60  |    |
|  |   | Power level | dB  | 72  |    |
| Exterior dimensions (Height x Width x Depth) |   | mm          | 945 x 970 x 370   |   |    |
| Exterior appearance (Munsell color)          |   |             | Stucco white (4.2Y 7.5/1.1) near equivalent   |   |    |
| Net weight                                   |   | kg          | 92  |   |    |
| Refrigerant equipment                        | Compressor type & Q'ty  |             |   | RM-T5126MDE21 (Twin rotary type) x 1                                |    |
|  | Motor (Starting method)   |             | kW  | 4.0 (Line starting)   |    |
|  | Refrigerant oil   |             | ℓ   | 1.0 (DIAMOND FREEZE MA68)   |    |
|  | Refrigerant (4)   |             | kg  | R410A 6.00 (Pre-Charged up to the piping length of 50m)             |    |
|  | Heat exchanger  |             |   | M fins & inner grooved tubing                                       |    |
|  | Refrigerant control   |             |   | Capillary tubes + Electronic expansion valve                        |    |
| Device control                               |   |             | Microcomputer control   |   |    |
| Air handling equipment                       | Fan type & Q'ty   |             |   | Propeller fan x 1   |    |
|  | Motor   |             | W   | 86  |    |
|  | Air flow  | Cooling     | m <sup>3</sup> /min   | 75.0  |    |
| Heating                                      |   | 82.0        |   |   |    |
| Shock & vibration absorber                   |   |             | Cushion rubber (for compressor)   |   |    |
| Electric heater                              |   |             | Crank case heater (220V 20W)  |   |    |
| Safety devices                               |   |             | Compressor overheat protection, Overcurrent protection, Frost protection, Serial signal error protection, Outdoor fan motor error protection, Heating & Cooling overload protection |   |    |
| Installation data                            | Refrigerant piping size (O.D)                                   |             | mm  | Liquid line: φ 6.35 (1/4") x 6<br>Gas line: φ 9.52 (3/8") x 6       |    |
|  | Connecting method   |             |   | Flare connecting  |    |
|  | Insulation for piping   |             |   | Necessary (Both sides), independent                                 |    |
|  | Length for one indoor unit                                      |             | m   | Max. 25   |    |
|  | Total length for all rooms                                      |             |   | Max. 90   |    |
|  | Vertical height difference between outdoor unit and indoor unit |             |   | Max. 20 (Outdoor unit is higher)<br>Max. 20 (Outdoor unit is lower) |    |
| Height difference of the indoor units        |   | Max. 25     |   |   |    |
| Recommended breaker size                     |   | A           | 30  |   |    |
| Connection wiring                            | Size x Core number  |             | 1.5mm <sup>2</sup> x 4 cores (Including earth cable)  |   |    |
|  | Connecting method   |             | Terminal block (Screw fixing type)  |   |    |
| IP number                                    |   |             | IPX4  |   |    |
| Accessories (included)                       |   |             | Union, Installation sheet, Elbow, Grommet x 2   |   |    |
| Indoor unit to be combined                   |   |             | SRK20,25,35ZJX-S,50ZJX-S1,60ZJX-S2,SRK20,25,35,50ZJ-S,SRK71ZK-S<br>SRF25,35ZJX-S,50ZJX-S1<br>SRR25,35,50ZJ-S,60ZJ-S1<br>FDTC25,35,50,60VF<br>FDEN50VF,FDUM50VF                      |   |    |
| Number of connectable indoor units           |   |             | Min. 4~Max. 6 (5)   |   |    |
| Total of indoor units                        |   | kW          | Max. 19.5   |   |    |

Note (1) The data are measured at the following conditions.

The pipe length for one indoor unit is 7.5m.

| Operation | Item | Indoor air temperature |      | Outdoor air temperature |      | Standards          |
|-----------|------|------------------------|------|-------------------------|------|--------------------|
|           |      | DB                     | WB   | DB                      | WB   |                    |
| Cooling   |      | 27°C                   | 19°C | 35°C                    | 24°C | ISO-T1, JIS C 9612 |
| Heating   |      | 20°C                   | —    | 7°C                     | 6°C  |                    |

(2) This air-conditioner is manufactured and tested in conformity with the ISO.

(3) The operation data are applied to the 220/230/240V districts respectively.

(4) The refrigerant quantity to be charged includes the refrigerant in 50m connecting piping.

(Purging is not required even for the short piping.)

(5) In case of combination with SRK-ZJX-S, SRK71ZK-S, FDEN50VD only, 3 indoor units can be connectable.

In case of SRK71ZK-S+SRK71ZK-S, 2 indoor units can be connectable.

(6) Current value at maximum number of indoor units connected.

## (4) 4way ceiling cassette type (FDTC)

Adapted to RoHS directive

| Model   |                     | FDTC25VF   |         |
|---|---------------------|--|---------|
| Item  |                     | Panel TC-PSA-25W-F   |         |
| Power source                                  |                     | 220/230/240V ~50Hz   |         |
| Operation data                                |                     | Cooling  | Heating |
| Nominal capacity (1)                          | kW                  | 2.5  | 3.4     |
| Sound Pressure Level                          | dB(A)               | Cooling P-Hi : 38 Hi : 36 Me : 32 Lo : 29<br>Heating P-Hi : 39 Hi : 38 Me : 33 Lo : 29.5 |         |
| Exterior dimensions<br>Height x Width x Depth | mm                  | Unit 248 x 570 x 570<br>Panel 35 x 700 x 700   |         |
| Exterior appearance<br>(Munsell color)        |                     | Plaster White<br>(6.8Y8.9/0.2) near equivalent   |         |
| Net weight                                    | kg                  | UNIT 15 PANEL 3.5  |         |
| Heat exchanger                                |                     | Louver fin & inner grooved tubing  |         |
| Air handling equipment<br>Fan type & Q'ty     |                     | Turbo fan x 1  |         |
| Motor <Starting method>                       | W                   | 33 < Direct line start >   |         |
| Air flow (Standard)                           | m <sup>3</sup> /min | Cooling P-Hi : 10 Hi : 9 Me : 8 Lo : 6.5<br>Heating P-Hi : 10.5 Hi : 9.5 Me : 8.5 Lo : 7 |         |
| Available static pressure                     | Pa                  | 0  |         |
| Outdoor air intake                            |                     | Not possible   |         |
| Air filter, Q'ty                              |                     | Pocket plastic net x 1 (Washable)  |         |
| Shock & vibration absorber                    |                     | Rubber sleeve (for fan motor)  |         |
| Insulation (noise & heat)                     |                     | Polyurethane form  |         |
| Remote control                                |                     | wired : RC-E5 (option) wireless : RCN-TC-24W-ER (option)                                 |         |
| Room temperature control                      |                     | Thermostat by electronics  |         |
| Safety equipment                              |                     | Overload protection for fan motor<br>Frost protection thermostat                         |         |
| Installation data<br>Refrigerant piping size  | mm                  | Liquid line : $\phi$ 6.35 (1/4")<br>Gas line : $\phi$ 9.52 (3/8")                        |         |
| Connecting method                             |                     | Flare piping   |         |
| Drain pump                                    |                     | Built-in Drain pump  |         |
| Drain   |                     | Hose Connectable with VP20   |         |
| Insulation for piping                         |                     | Necessary (both Liquid & Gas lines)  |         |
| IP number                                     |                     | IPX0   |         |
| Standard Accessories                          |                     | Mounting kit, Drain hose   |         |

Notes (1) The data are measured at the following conditions when the air flow is high mode.

| Item    | Indoor air temperature |      | Outdoor air temperature |      |
|---------|------------------------|------|-------------------------|------|
|         | DB                     | WB   | DB                      | WB   |
| Cooling | 27°C                   | 19°C | 35°C                    | 24°C |
| Heating | 20°C                   |      | 7°C                     | 6°C  |

(2) This packaged air-conditioner is manufactured and tested in conformity with the ISO.

(3) Sound pressure level indicates the value in an anechoic chamber. During operation these value are somewhat higher due to ambient temperature.

(4) The operation data indicates when the air-conditioner is operated at 220/230/240V 50Hz.

(5) When wireless remote control is used, fan is 3 speed setting(Hi-Me-Lo) only.

Adapted to RoHS directive

| Model   |                        | FDT35VF   |                         |      |
|---|------------------------|---|-------------------------|------|
| Item  |                        | Panel TC-PSA-25W-E  |                         |      |
| Power source  |                        | 220/230/240V ~ 50Hz   |                         |      |
| Operation data  |                        | Cooling   | Heating                 |      |
| Nominal capacity (1)  | kW                     | 3.5   | 4.5                     |      |
| Sound Pressure Level  | dB(A)                  | Cooling P-Hi : 41 Hi : 40 Me : 36 Lo : 30<br>Heating P-Hi : 43 Hi : 42 Me : 35 Lo : 32  |                         |      |
| Exterior dimensions<br>Height x Width x Depth   | mm                     | Unit 248 x 570 x 570<br>Panel 35 x 700 x 700  |                         |      |
| Exterior appearance<br>(Munsell color)  |                        | Plaster White<br>(6.8Y8.9/0.2) near equivalent  |                         |      |
| Net weight  | kg                     | UNIT 15 PANEL 3.5   |                         |      |
| Heat exchanger  |                        | Louver fin & inner grooved tubing   |                         |      |
| Air handling equipment<br>Fan type & Q'ty   |                        | Turbo fan x 1   |                         |      |
| Motor <Starting method>   | W                      | 33 < Direct line start >  |                         |      |
| Air flow (Standard)   | m <sup>3</sup> /min    | Cooling P-Hi : 11 Hi : 9.5 Me : 9 Lo : 7<br>Heating P-Hi : 11.5 Hi : 10.0 Me : 9 Lo : 8 |                         |      |
| Available static pressure   | Pa                     | 0   |                         |      |
| Outdoor air intake  |                        | Not possible  |                         |      |
| Air filter, Q'ty  |                        | Pocket plastic net x 1 (Washable)   |                         |      |
| Shock & vibration absorber  |                        | Rubber sleeve (for fan motor)   |                         |      |
| Insulation (noise & heat)   |                        | Polyurethane form   |                         |      |
| Remote control  |                        | wired : RC-E5 (option) wireless : RCN-TC-24W-ER (option)                                |                         |      |
| Room temperature control  |                        | Thermostat by electronics   |                         |      |
| Safety equipment  |                        | Overload protection for fan motor<br>Frost protection thermostat                        |                         |      |
| Installation data<br>Refrigerant piping size  | mm                     | Liquid line : $\phi$ 6.35 (1/4")<br>Gas line : $\phi$ 9.52 (3/8")                       |                         |      |
| Connecting method   |                        | Flare piping  |                         |      |
| Drain pump  |                        | Built-in Drain pump   |                         |      |
| Drain   |                        | Hose Connectable with VP20  |                         |      |
| Insulation for piping   |                        | Necessary (both Liquid & Gas lines)   |                         |      |
| IP number   |                        | IPX0  |                         |      |
| Standard Accessories  |                        | Mounting kit, Drain hose  |                         |      |
| Notes (1) The data are measured at the following conditions when the air flow is high mode.   |                        |   |                         |      |
|   | Indoor air temperature |   | Outdoor air temperature |      |
| Operation   | DB                     | WB  | DB                      | WB   |
| Cooling   | 27°C                   | 19°C  | 35°C                    | 24°C |
| Heating   | 20°C                   |   | 7°C                     | 6°C  |
| (2) This packaged air-conditioner is manufactured and tested in conformity with the ISO.  |                        |   |                         |      |
| (3) Sound pressure level indicates the value in an anechoic chamber. During operation these value are somewhat higher due to ambient temperature. |                        |   |                         |      |
| (4) The operation data indicates when the air-conditioner is operated at 220/230/240V 50Hz.   |                        |   |                         |      |
| (5) When wireless remote control is used, fan is 3 speed setting(Hi-Me-Lo) only.  |                        |   |                         |      |

Adapted to RoHS directive

| Model   |                     | FDTC50VF   |         |
|---|---------------------|--|---------|
| Item  |                     | Panel TC-PSA-25W-E   |         |
| Power source                                  |                     | 220-240V ~ 50Hz / 220V ~ 60Hz  |         |
| Operation data                                |                     | Cooling  | Heating |
| Nominal capacity (1)                          | kW                  | 5.0  | 5.8     |
| Sound Pressure Level                          | dB(A)               | Cooling P-Hi : 47 Hi : 42 Me : 36 Lo : 30<br>Heating P-Hi : 47 Hi : 42 Me : 36 Lo : 32     |         |
| Exterior dimensions<br>Height x Width x Depth | mm                  | Unit 248 x 570 x 570<br>Panel 35 x 700 x 700   |         |
| Exterior appearance<br>(Munsell color)        |                     | Plaster White<br>(6.8Y8.9/0.2) near equivalent   |         |
| Net weight                                    | kg                  | UNIT 15 PANEL 3.5  |         |
| Heat exchanger                                |                     | Louver fin & inner grooved tubing  |         |
| Air handling equipment<br>Fan type & Q'ty     |                     | Turbo fan x 1  |         |
| Motor <Starting method>                       | W                   | 33 < Direct line start >   |         |
| Air flow (Standard)                           | m <sup>3</sup> /min | Cooling P-Hi : 13.5 Hi : 11.5 Me : 9 Lo : 7<br>Heating P-Hi : 13.5 Hi : 11.5 Me : 9 Lo : 8 |         |
| Available static pressure                     | Pa                  | 0  |         |
| Outdoor air intake                            |                     | Not possible   |         |
| Air filter, Q'ty                              |                     | Pocket plastic net x 1 (Washable)  |         |
| Shock & vibration absorber                    |                     | Rubber sleeve (for fan motor)  |         |
| Insulation (noise & heat)                     |                     | Polyurethane form  |         |
| Remote control                                |                     | wired : RC-E5 (option) wireless : RCN-TC-24W-ER (option)                                   |         |
| Room temperature control                      |                     | Thermostat by electronics  |         |
| Safety equipment                              |                     | Overload protection for fan motor<br>Frost protection thermostat                           |         |
| Installation data<br>Refrigerant piping size  | mm                  | Liquid line : $\phi$ 6.35 (1/4")<br>Gas line : $\phi$ 12.7 (1/2")                          |         |
| Connecting method                             |                     | Flare piping   |         |
| Drain pump                                    |                     | Built-in Drain pump  |         |
| Drain   |                     | Hose Connectable with VP20   |         |
| Insulation for piping                         |                     | Necessary (both Liquid & Gas lines)  |         |
| IP number                                     |                     | IPX0   |         |
| Standard Accessories                          |                     | Mounting kit, Drain hose   |         |

Notes (1) The data are measured at the following conditions.

| Item    | Indoor air temperature |      | Outdoor air temperature |      |
|---------|------------------------|------|-------------------------|------|
|         | DB                     | WB   | DB                      | WB   |
| Cooling | 27°C                   | 19°C | 35°C                    | 24°C |
| Heating | 20°C                   |      | 7°C                     | 6°C  |

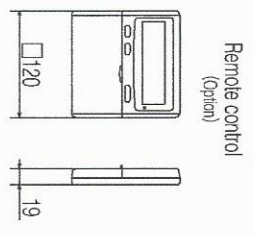
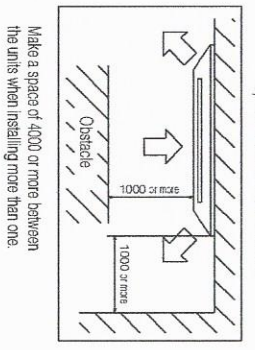
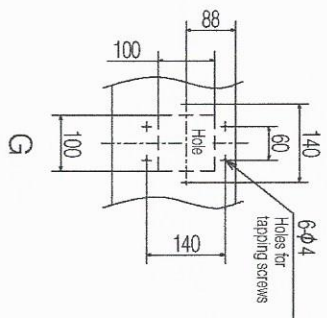
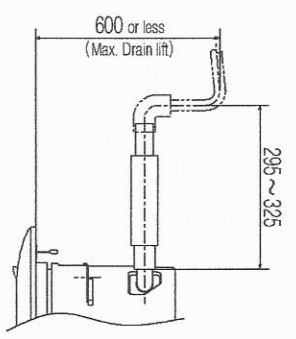
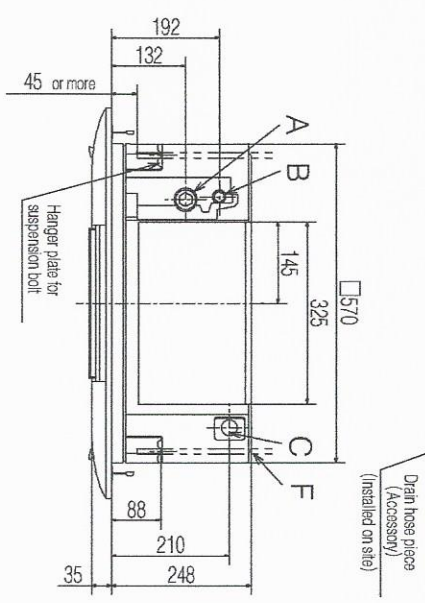
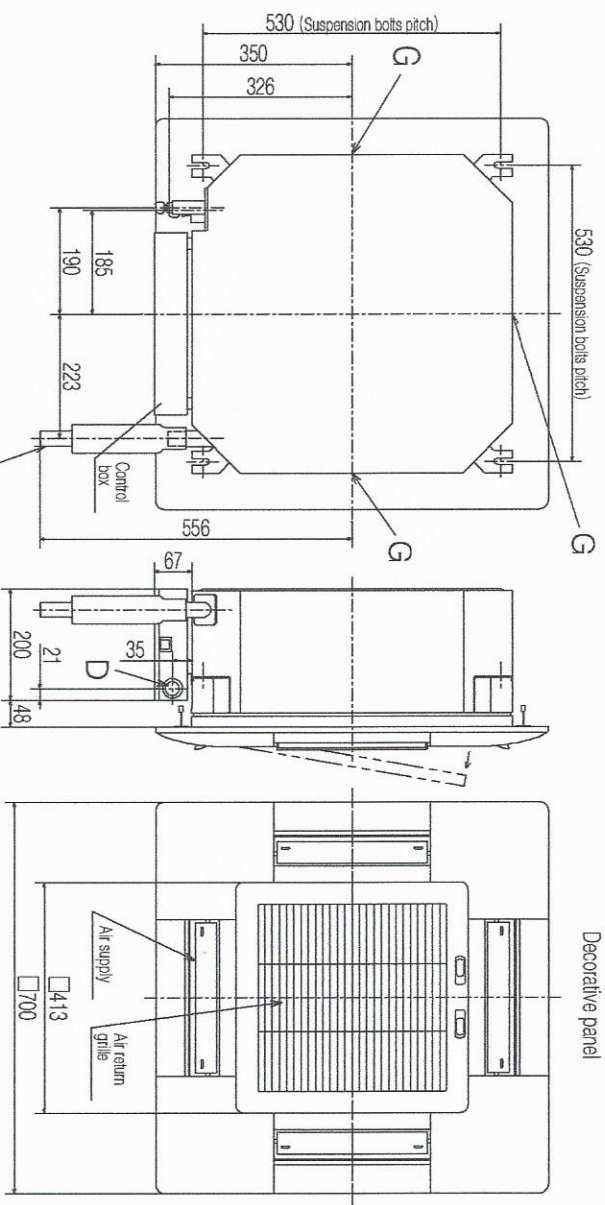
(2) This packaged air-conditioner is manufactured and tested in conformity with the ISO.

(3) Sound pressure level indicates the value in an anechoic chamber. During operation these value are somewhat higher due to ambient temperature.

(4) The operation data indicates when the air-conditioner is operated at 230V50Hz or 220V60Hz.

(5) When wireless remote control is used, fan is 3 speed setting(Hi-Me-Lo) only.

| Symbol | Content  |
|--------|--|
| A      | Gas piping<br>Model 25.35 : $\phi 9.52(3/8)$ (Flare)<br>50.60 : $\phi 12.7(1/2)$ (Flare) |
| B      | Liquid piping<br>$\phi 6.35(1/4)$ (Flare)  |
| C      | Drain piping<br>VP20 (I.D.20, O.D.26) Note (2)   |
| D      | Hole for wiring<br>$\phi 25$   |
| F      | Suspension bolts<br>(M10 or M8)  |
| G      | Ducting for air outlet<br>(Knock-out)  |

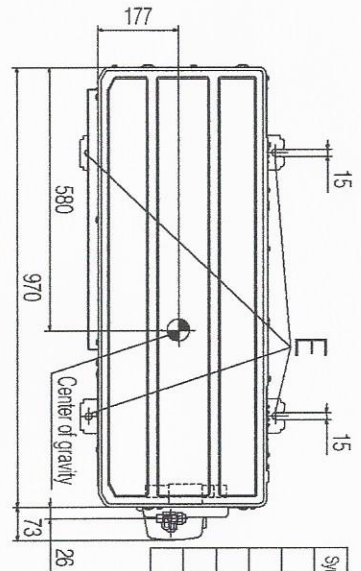
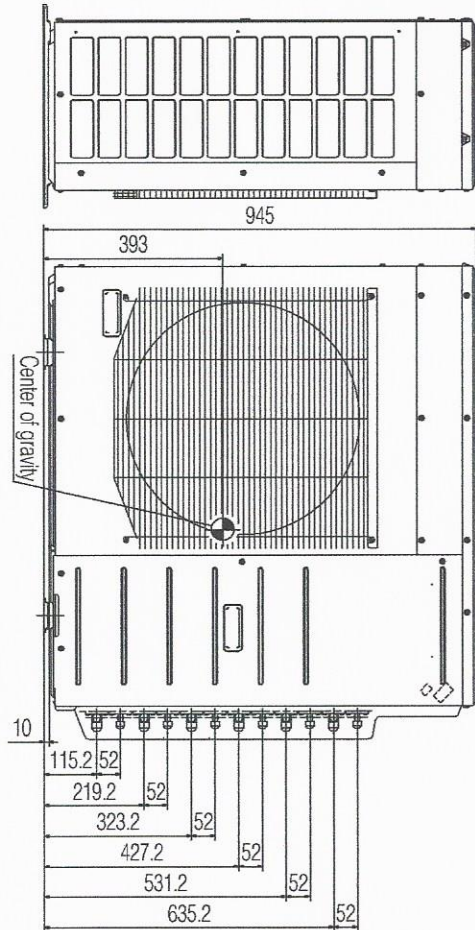
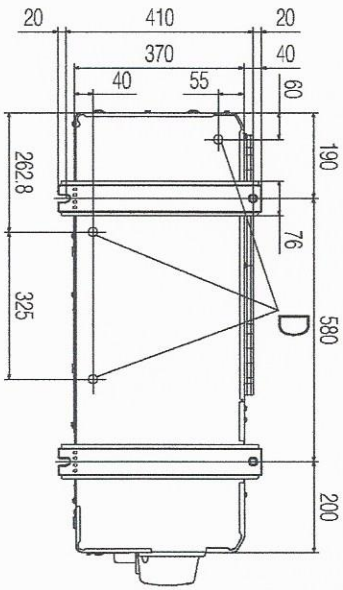


- Notes (1) The model name label is attached on the control box lid.  
 (2) Prepare the connecting socket (VP20) on site.  
 (3) This unit is designed for 2x2 grid ceiling.  
 If it is installed on a ceiling other than 2x2 grid ceiling, provide an inspection port on the control box side.

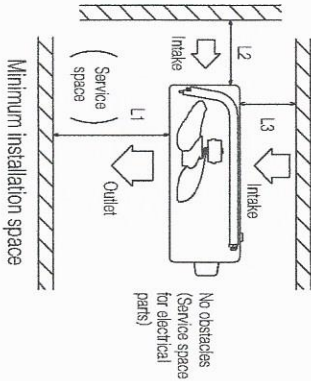
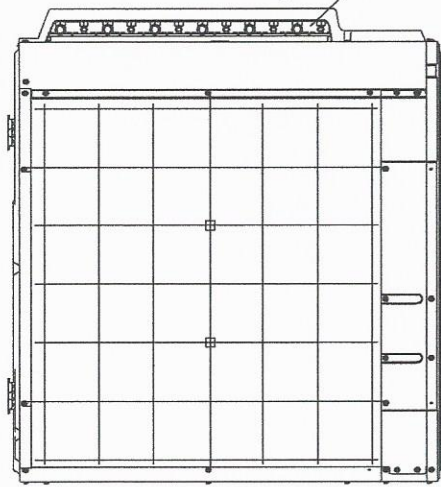
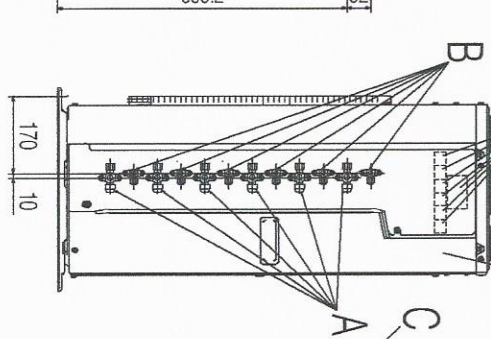
Unit:mm

PJA003Z338

RWC000Z243A



| Symbol | Content                                |
|--------|--|
| A      | Service valve connection (gas side)    |
| B      | Service valve connection (liquid side) |
| C      | Pipe/cable draw-out hole               |
| D      | Drain discharge hole                   |
| E      | Anchor bolt hole                       |



| Dimensions | Empty | Header | Unit |
|------------|-------|--------|------|
| L1         | Open  | Open   | 500  |
| L2         | 300   | 5      | Open |
| L3         | 150   | 300    | 150  |

Unit:mm

- Notes
- (1) It must not be surrounded by walls on the four sides.
  - (2) The unit must be fixed with anchor bolts. An anchor bolt must not protrude more than 15mm.
  - (3) Where the unit is subject to strong winds, lay it in such a direction that the blower outlet faces perpendicularly to the dominant wind direction.
  - (4) Leave 1m or more space above the unit.
  - (5) A wall in front of the blower outlet must not exceed the unit's height.
  - (6) The model name label is attached on the rear panel.

MODEL SCM1232-91