

- General Notes**
- Dimensions are in millimetres unless stated otherwise.
 - Levels are in metres AOD unless stated otherwise.
 - Dimensions govern. Do not scale off drawing.
 - All dimensions to be verified on site before proceeding.
 - All discrepancies to be notified in writing to Make Limited.

© Make Limited 2008

- Additional Notes**
- All landscaping is illustrative.
 - All entrances and internal layouts are illustrative.
 - All drawings should be viewed at A1.
1:1250@A1 = 1:2500@A3
1:500@A1 = 1:1000@A3
1:200@A1 = 1:400@A3
1:50@A1 = 1:100@A3
These scales are approximate. Do not scale off drawings.

- Material descriptions:**
- A New fair-faced brickwork
 - i Type 1 (Charlotte Street)
 - ii Type 2 (New Chitty Street elevation)
 - iii Type 3 (Chitty Street residential)
 - iv Type 4 (Whitfield Street residential)
 - v Type 5 (New Whitfield Street extension)
 - vi Type 6 (New 14 Charlotte Mews)
 - B Mix of glass & opaque metal cladding panels
 - C Set-back bays comprised of transparent glass windows with metal reveals & opaque metal cladding panels
 - D Pushed-out bays comprised of transparent glass windows with metal reveals & opaque metal cladding panels
 - E Metal-louvers to roof plant
 - F New fair-faced brick screen wall with metallic channel
 - G Perforated metal canopy (brise-soleil)
 - H Glass balustrade with stainless steel channel
 - I Existing facade retained with improved replacement windows.
 - J New prefabricated concrete frame
 - K Glass atrium with metal structure & ETFE roof
 - L Metallic fascia
 - M New fair-faced brickwork to match existing & new windows to match those below
 - N Existing brickwork made good
 - O Existing concrete sills cleaned and made good
 - P Existing stone panelling cleaned and made good
 - Q Existing railings retained
 - R New metal railings painted black to match existing
 - S Green/ brown roof
 - T Terrace/ balcony
 - U Transparent glass panels

Rev	Date	Reason For Issue	Chk
05	26/11/14	Section 73	MT
04	24/09/13	Section 73	MT
03	19/08/13	Section 96A	MT
02	29/07/13	Section 96A	MT
01	18.03.11	Planning Addendum	MT
00	09.12.10	Planning Application	MT

make

55-65 Whitfield Street,
London, W1T 4HE

tel +44 (0) 20 7636 5151
fax +44 (0) 20 7636 5252
info@makearchitects.com
www.makearchitects.com

Client
**West London & Suburban
Property Investments Limited**

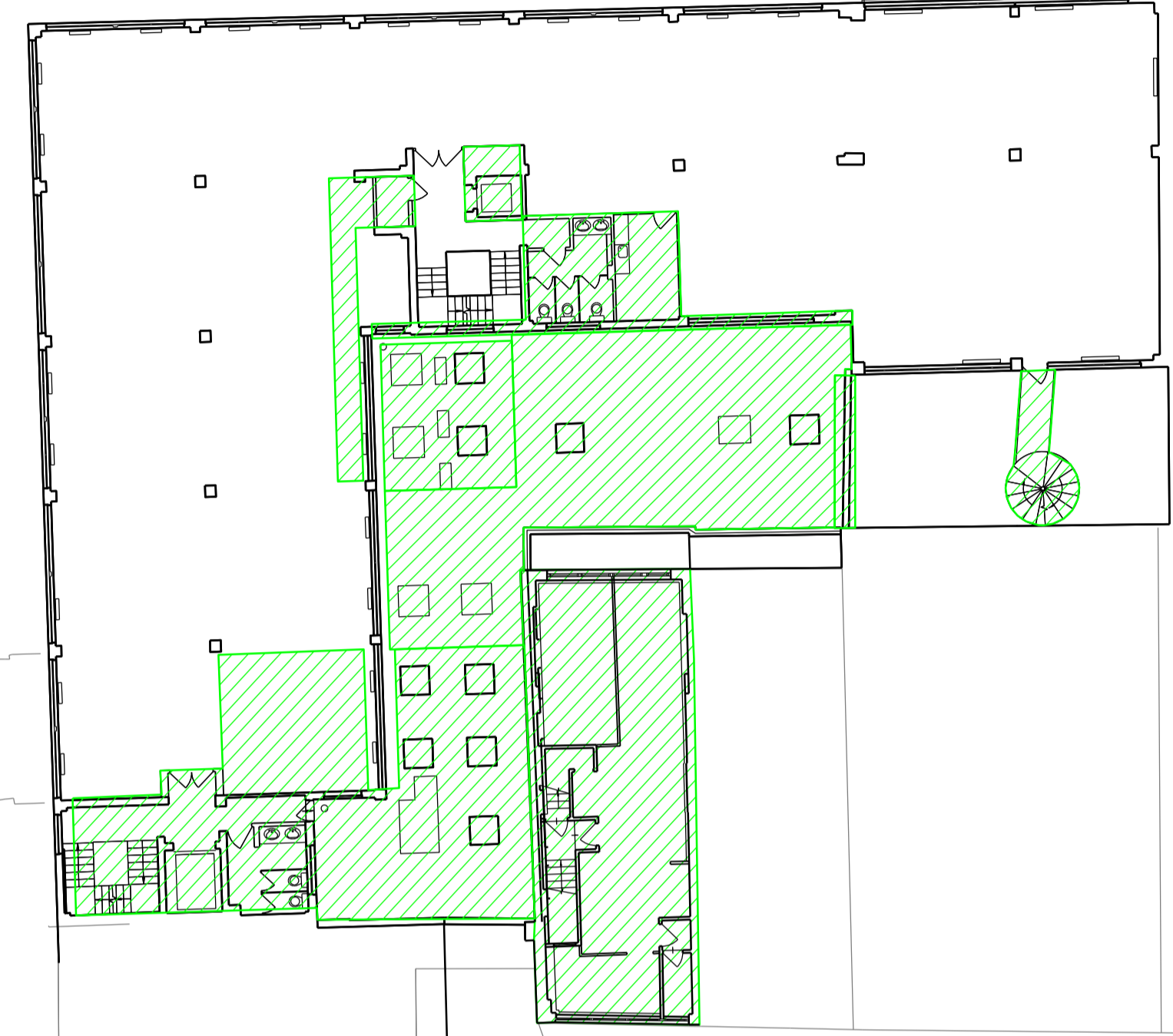
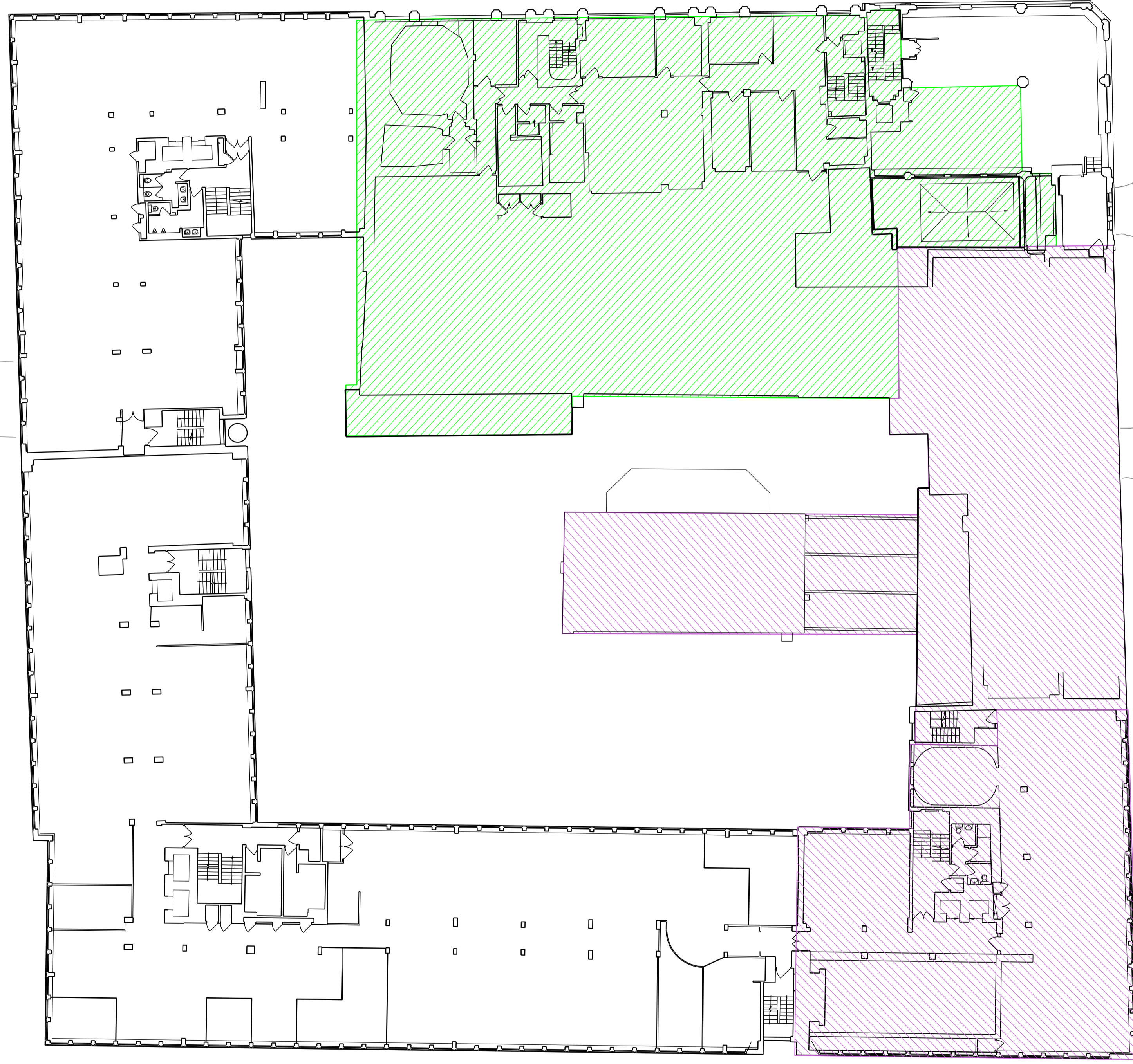


Project
**80 Charlotte Street &
65 Whitfield Street**

Drawing Title
**Existing / Demolition:
Level 01 floor plan**

Scale Paper Size Date
1:200 @A1 09.12.10

Project No. Draw No. Rev No.
0355 P1101 05



Demolition within Charlotte Street Conservation Area
Substantial demolition outside Conservation Area

