

- General Notes**
- Dimensions are in millimetres unless stated otherwise.
  - Levels are in metres AOD unless stated otherwise.
  - Dimensions govern. Do not scale off drawing.
  - All dimensions to be verified on site before proceeding.
  - All discrepancies to be notified in writing to Make Limited.

© Make Limited 2008

**Additional Notes**

- All landscaping is illustrative.
- All entrances and internal layouts are illustrative.
- All drawings should be viewed at A1.  
1:1250@A1 = 1:2500@A3  
1:500@A1 = 1:1000@A3  
1:200@A1 = 1:400@A3  
1:50@A1 = 1:100@A3  
These scales are approximate. Do not scale off drawings.

- Material descriptions:**
- New fair-faced brickwork
    - Type 1 (Charlotte Street)
    - Type 2 (New Chilly Street elevation)
    - Type 3 (Chilly Street residential)
    - Type 4 (Whitfield Street residential)
    - Type 5 (New Whitfield Street extension)
    - Type 6 (New 14 Charlotte Mews)
  - Mix of glass & opaque metal cladding panels
  - Set-back bays comprised of transparent glass windows with metal reveals & opaque metal cladding panels
  - Pushed-out bays comprised of transparent glass windows with metal reveals & opaque metal cladding panels
  - Metal covers to roof plant
  - New fair-faced brick screen wall with metallic channel
  - Perforated metal canopy (brise-soleil)
  - Glass balustrade with stainless steel channel
  - Existing facade retained with improved replacement windows.
  - New prefabricated concrete frame
  - Glass atrium with metal structure & ETFE roof
  - Metallic fascia
  - New fair-faced brickwork to match existing & new windows to match those below
  - Existing brickwork made good
  - Existing concrete sills cleaned and made good
  - Existing stone panelling cleaned and made good
  - Existing railings retained
  - New metal railings painted black to match existing
  - Green/brown roof
  - Terrace/balcony
  - Transparent glass panels

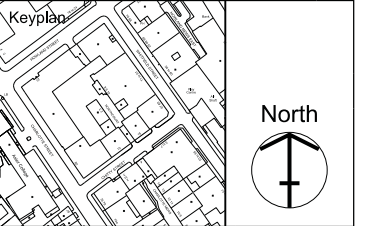
02	26.11.14	Section 73	MT
01	23.10.13	Section 73	MT
00	09.12.10	Planning Application	MT
Rev	Date	Reason For Issue	Chk

**make**

55-65 Whitfield Street,  
London, W1T 4HE

tel +44 (0) 20 7636 5151  
fax +44 (0) 20 7636 5252  
info@makearchitects.com  
www.makearchitects.com

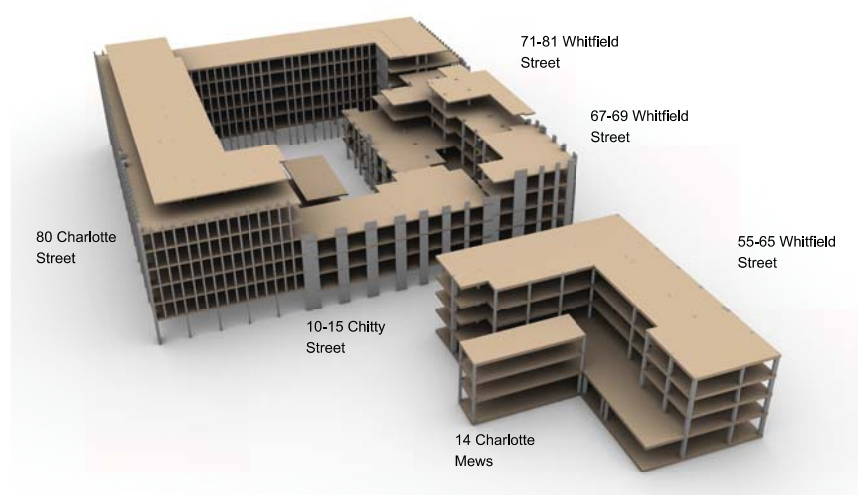
**Client**  
West London & Suburban  
Property Investments Limited



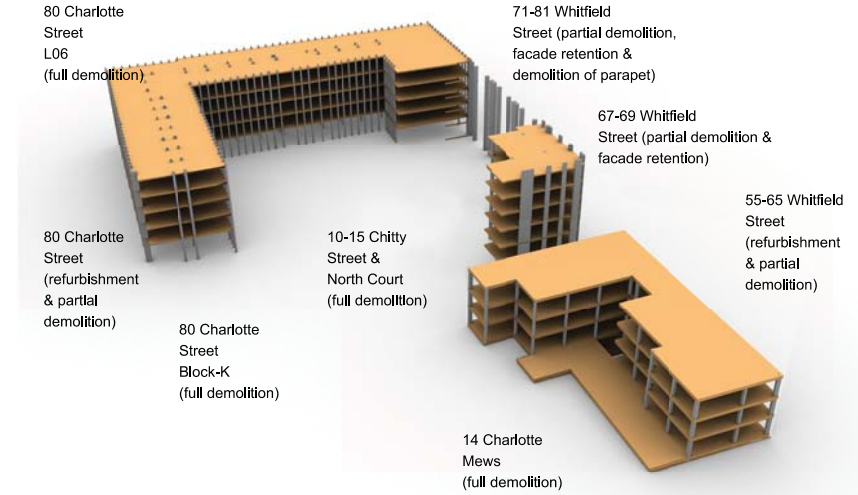
**Project**  
80 Charlotte Street &  
65 Whitfield Street

**Drawing Title**  
Existing demolition overview

Scale	Paper Size	Date
1: 500	@A1	09.12.10
Project No.	Draw No.	Rev No.
0355	P1000	02



Existing structures (Illustrative)



Demolition (Illustrative)

- Boundary line
- Charlotte Street Conservation area
- Demolition within Charlotte Street Conservation Area
- Substantial demolition outside Conservation Area
- Area excluded from Planning Application

