

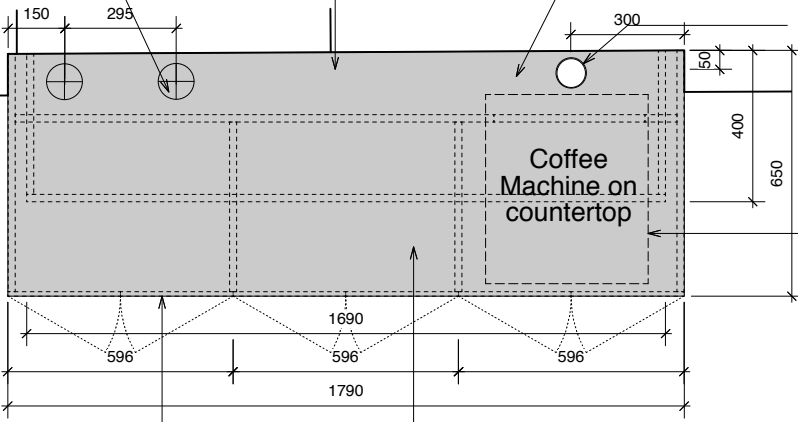
2N° Inset power modules in counter credenza top. (1N° plug socket, 1N° USB port & 1N° Data port). Ref: CMD Porthole

Main construction to be 19mm Valchromat pigmented MDF. Colour: Black SBL, Satin finish.

Space to rear of unit to allow for cabling & plumbing, and to allow for dado moulding to remain intact behind unit. Cut-out in panel beneath coffee to allow access to plumbing

Allow for ø80mm grommet to countertop for connecting hoses and electric supply to coffee machine

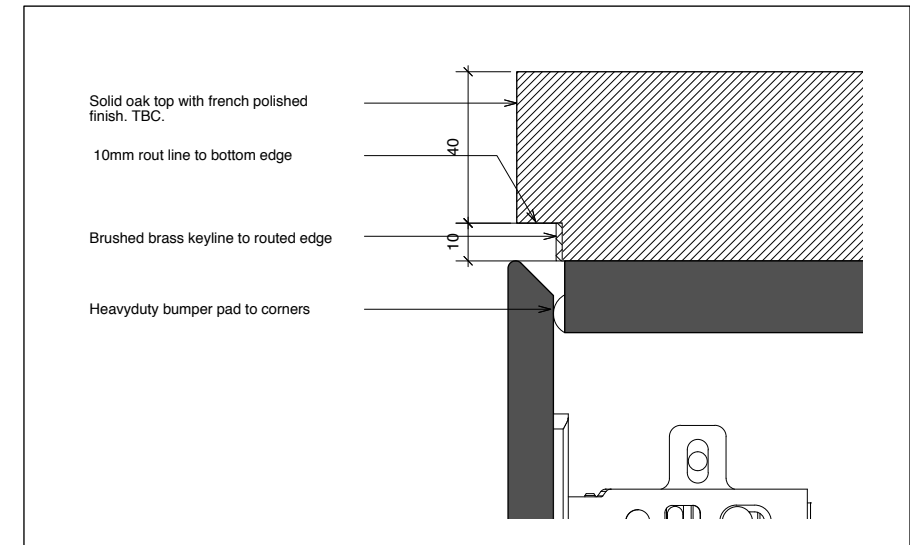
Coffee machine specification to be confirmed by client and M&E engineer.



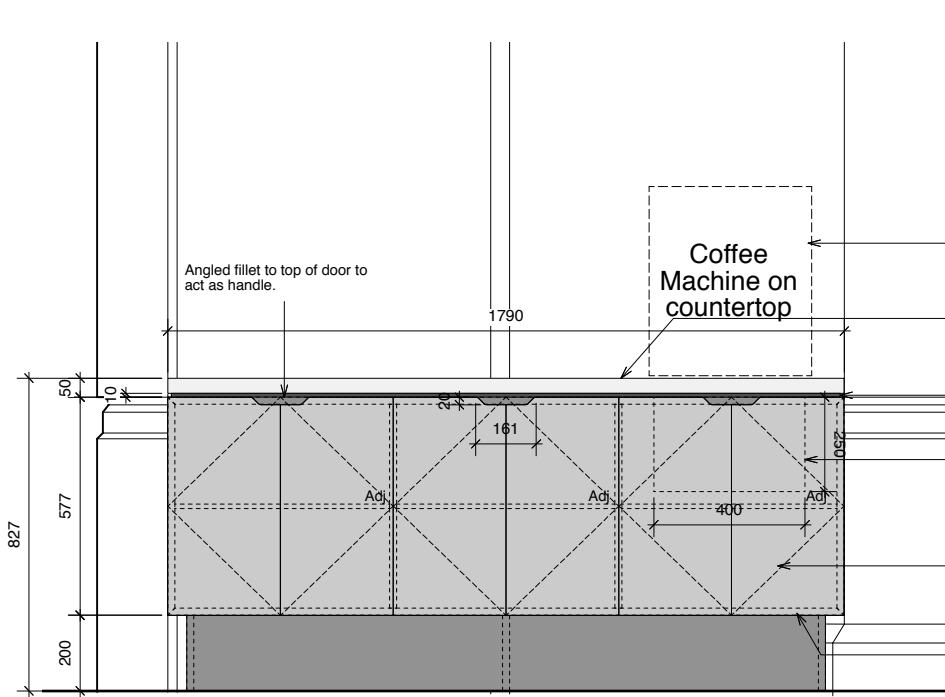
12mm Valchromat pigmented MDF doors. Colour: Black SBL, Satin finish. Heavyduty bumper pads to corners

Solid oak top with french polished finish. TBC. 10mm rout line to bottom edge with brushed brass keyline.

1 Sideboard Plan Scale: 1:10



5 Detail D Scale: 1:1



Angled fillet to top of door to act as handle.

Coffee Machine on countertop

Coffee machine specification to be confirmed by client and M&E engineer.

Solid oak top with french polished finish. TBC. 10mm rout line to bottom edge with brushed brass keyline.

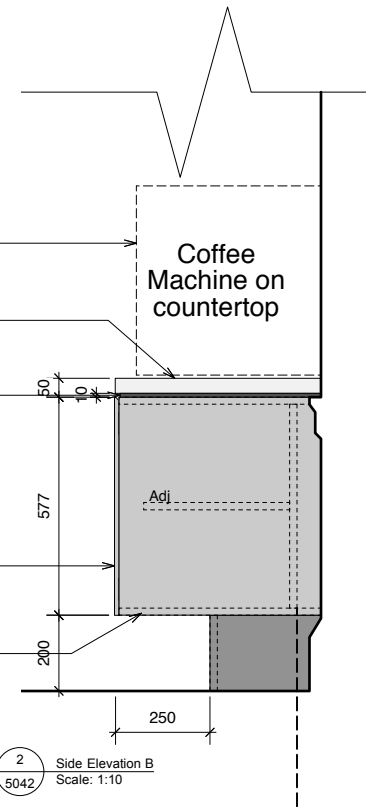
Brushed brass keyline to 10mm rout line.

Space to rear of unit to allow for cabling & plumbing, and to allow for dado moulding to remain intact behind unit. Cut-out in panel beneath coffee to allow access to plumbing

12mm Valchromat pigmented MDF doors. Colour: Black SBL, Satin finish. Heavyduty bumper pads to corners

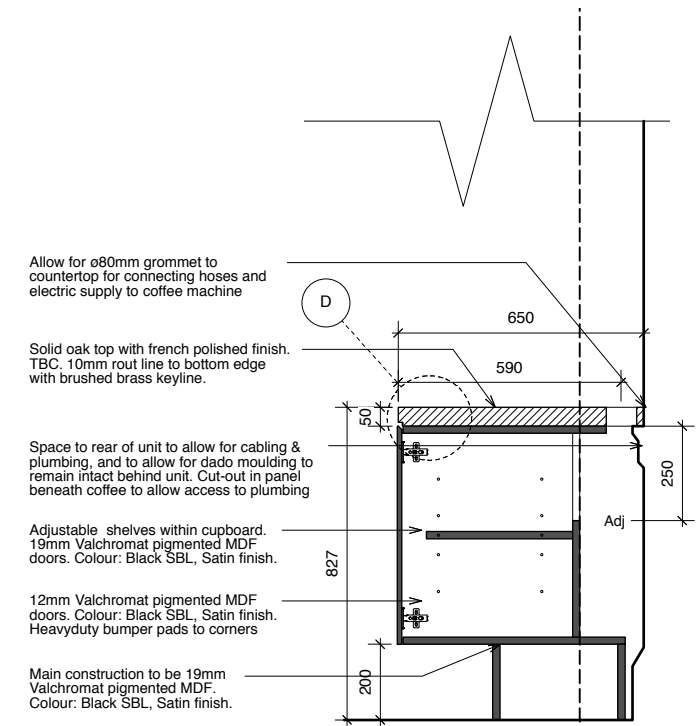
Main construction to be 19mm Valchromat pigmented MDF. Colour: Black SBL, Satin finish.

2 Front Elevation A Scale: 1:10



Coffee Machine on countertop

2 Side Elevation B Scale: 1:10



Allow for ø80mm grommet to countertop for connecting hoses and electric supply to coffee machine

Solid oak top with french polished finish. TBC. 10mm rout line to bottom edge with brushed brass keyline.

Space to rear of unit to allow for cabling & plumbing, and to allow for dado moulding to remain intact behind unit. Cut-out in panel beneath coffee to allow access to plumbing

Adjustable shelves within cupboard. 19mm Valchromat pigmented MDF doors. Colour: Black SBL, Satin finish.

12mm Valchromat pigmented MDF doors. Colour: Black SBL, Satin finish. Heavyduty bumper pads to corners

Main construction to be 19mm Valchromat pigmented MDF. Colour: Black SBL, Satin finish.

2 Section C Scale: 1:10

Revision	Date	Initial	Amendment
A	28.11.14	AJL	Planning issue

Notes  
 No dimensions are to be scaled from this drawing. The contractor / manufacturer is responsible for checking all dimensions and querying any discrepancies.  
 This drawing is the property of Bisset Adams Ltd.  
 Copyright is reserved by Bisset Adams Ltd. and the drawing is issued on condition that it is not copied, reproduced, retained or disclosed to any unauthorised person, either wholly or in part, without written consent.

**Manufacturer to check all site dimensions prior to manufacture due to irregularities in the existing walls.**  
**Joinery unit to be aligned to existing dado rail. Skirting and dado rail shown indicatively. Manufacturer to check on site prior to manufacture.**

	<b>Royal Holloway, University of London</b> <b>11 BEDFORD SQUARE-00-5042</b> <b>Proposed Sideboard Joinery Detail</b>		
	Scale: 1:10 Date: 13.11.14 Drawing: RL001 BEDFORD SQUARE-00-5042-A	Status: Planning Drawn: IG Checked: ---	