

Loft Space

New Fire Rated Elements and Fire Signage

- Final Exit
- New structural elements - to be 60minute fire resistant
- Fire rated secondary glazing fitted inside existing historic window
- Retained existing fire door - not upgraded
- New fire door to be installed
- Existing fire door to be upgraded
- Fire alarm call point
- Refuge area 900x1400mm
- Existing fire compartment - 30min fire rated
- New fire compartment - 30min fire rating
- 30mins fire rated window
- 30mins integrity & insulated fire rated door with smoke seals
- Fire Exit Signage (Final Exit) - FEA
- Fire Exit Signage (Straight on from here) - FEU
- Fire Exit Signage (Straight on and down from here) - FED
- Fire Exit Signage (Left from here) - FEL
- Fire Exit Signage (Right from here) - FER
- Fire Exit Signage (Down and right from here) - FEDR

NOTES:

For more information of the buildings fire alarm system, emergency lighting and illumination of exit signs refer to Services Engineer's drawings and specifications.

Fire Signage to conform to BS 5499.

The emergency exit signage layout here reflects the design intent. Final locations of exit signs to be confirmed and agreed on site with the Approved Inspector.

Fire Compartmentation/Protection is required to all escape routes. An indication of the fire compartmentation of existing walls has been shown. Any new service penetrations to existing wall should be provided with suitable fire stop.

All new structural elements and floors to be to a 60 minute fire resistance. Non structural elements to be 30 minute fire resistance.

Category LD1 Fire System to be provided throughout

FIRE EXTINGUISHER PROVISION:

- 1 x 21A rated water (with additive)
- 1 x 34B CO2

at each fire alarm break glass call point

- 1 x Light duty fire blanket at each pantry/kitchen

LEGEND :

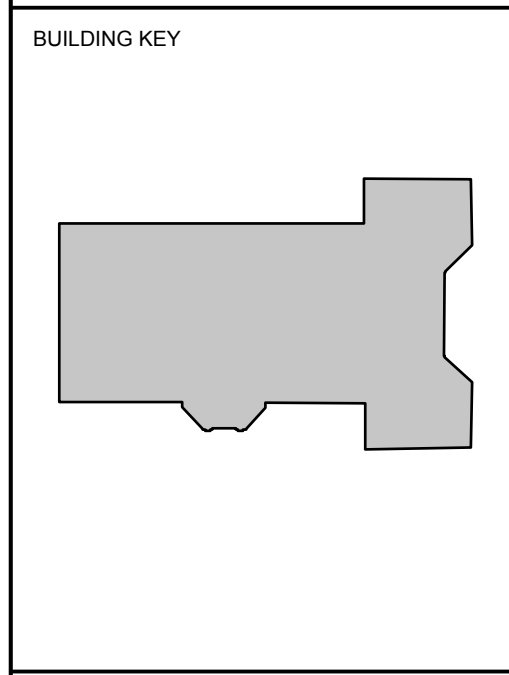
AH	Arch Height
ASH	Arch Spring Height
BH	Beam Height
BL	Beam Level
CAH	Ceiling Arch Height
CH	Ceiling Height
CL	Ceiling Level
CPD	Cupboard
CSH	Ceiling Spring Height
DH	Door Height
DOH	Door Opening Height
DP	Downpipe
ESG	Electrical Switch Gear
F-H	Floor - Head Height
F-S	Floor - Sill Height
FBH	False Beam Height
FCH	False Ceiling Height
FL	Floor Level
G	Gully
GL	Ground Level
H	High
HB	Hand Basin
HL	Head Level
HWT	Hot Water Tank
IC	Inspection Cover
RAD	Radiator
RL	Roof Level
RWP	Rainwater Pipe
S-AH	Sill - Arch Height
S-H	Sill - Head Height
S-SH	Sill - Spring Height
SL	Sill Level
SVP	Soil Vent Pipe
VP	Vent Pipe
WAD	Window Above Door
WAW	Window Above Window
WC	Water Closet
WS	Work Surface
→	Floor Level Steps Up
---→	Ceiling Level Slopes Up

NOTES :

The accuracy of this survey drawing is dependent upon the scale at which it is produced. Users should not re-scale this drawing without consent.

All level values refer to the following OSBM:-

South East Face, No.11 Bedford Square; Value 27.73m



DRAWING TITLE KEY

BEDFORD SQUARE	(i)	(ii)	(iii)
	00	1002	A

(i) BUILDING LEVEL

- 00 - Ground Level
- 01 - First Floor
- 02 - Second Floor
- 03 - Third Floor
- 04 - Roof Level
- 98 - Basement Level
- 99 - Whole Building
- S - Site

(ii) DRAWING TYPE / NUMBER

- 00(XX) - Site Drawings (drawing no.)
- 10(XX) - Existing Plan Drawings (drawing no.)
- 11(XX) - Demolition Plan Drawings (drawing no.)
- 12(XX) - Proposed Plan Drawings (drawing no.)
- 13(XX) - Reflected Ceiling Plans (drawing no.)
- 15(XX) - Floor Finishes Drawings (drawing no.)
- 16(XX) - Fire Strategy Drawings (drawing no.)
- 20(XX) - Elevation Drawings (drawing no.)
- 30(XX) - Section Drawings (drawing no.)
- 40(XX) - External Detail (drawing no.)
- 50(XX) - Internal Detail (drawing no.)

(iii) DRAWING REVISION

- (W.B.01) - Window number
- (R.B.01) - Room number
- (D.B.01) - Door number
- (F.B.01) - Fireplace number
- Internal room elevation
- Proposed max. desk allowance

Revision	Date	Initial	Amendment	Notes
A	28 11 14	AJL	Planning issue	No dimensions are to be scaled from this drawing. The contractor / manufacturer is responsible for checking all dimensions and querying any discrepancies. This drawing is the property of Bisset Adams Ltd. Copyright is reserved by Bisset Adams Ltd. and the drawing is issued on condition that it is not copied, reproduced, retained or disclosed to any unauthorised person, either wholly or in part, without written consent.

	Royal Holloway, University of London	
	11 BEDFORD SQUARE-3-1605	
	Proposed Third Floor Fire Strategy	
	Scale 1:50 @ A1	Status Planning
Date 20 10 14	Drawn AJL	Checked ---
Drawing RL001 11 BEDFORD SQUARE-3-1605-A		

440320 7550 0440
www.bissetadams.co.uk
71 Central Street, London EC1V 8BU

BISSET ADAMS