

GENERAL NOTES

Drawing to be read in conjunction with all information by architects, structural engineer & service consultants.

The contractor is not to scale from this drawing. All written dimensions to be checked on site before work commences. Discrepancies, where identified, must be reported to the architect immediately.

This drawing is the property of Latitude Architects and Designers and must not be reproduced or disclosed to any unauthorised person either wholly or in part without written consent.

NOTES:

All glazing to match the criteria specified by the Acoustic Consultant (RBA Acoustics) in their External Building Fabric Report 5181/EBF Revision Number 1

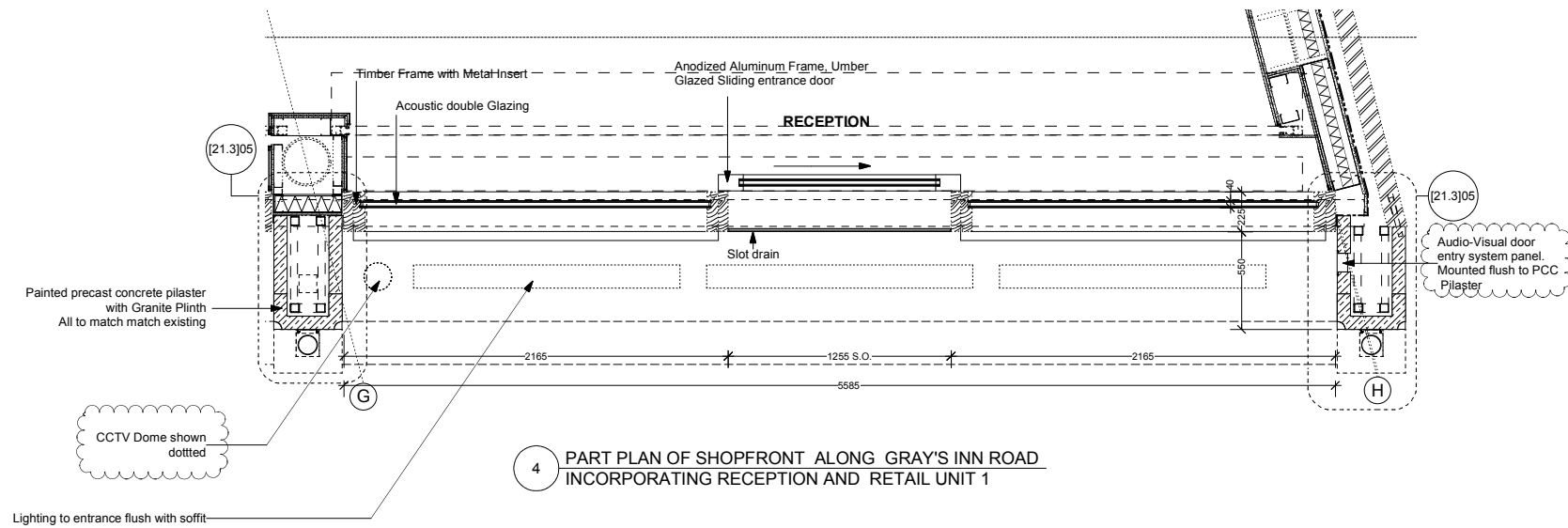
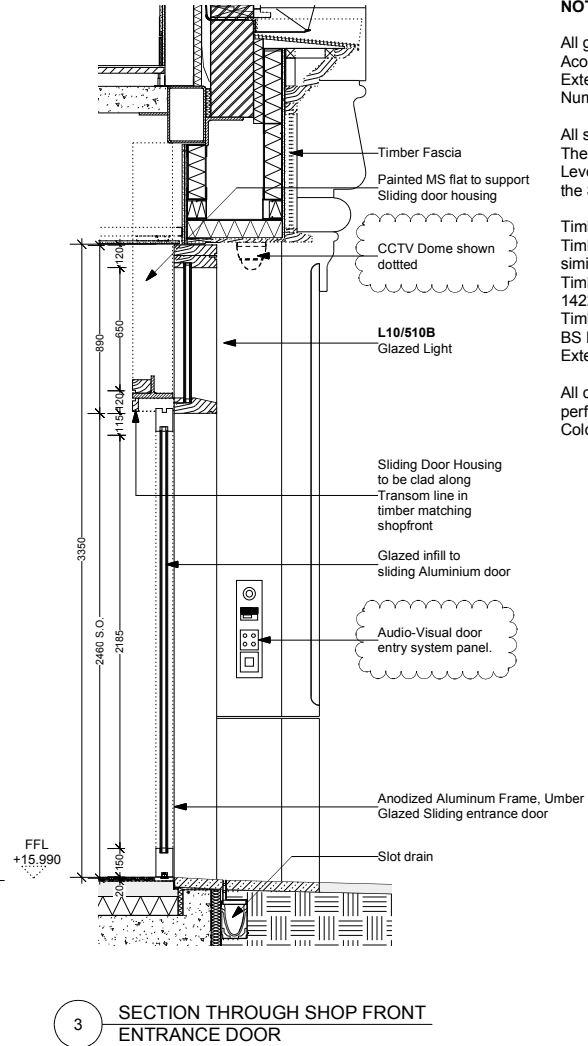
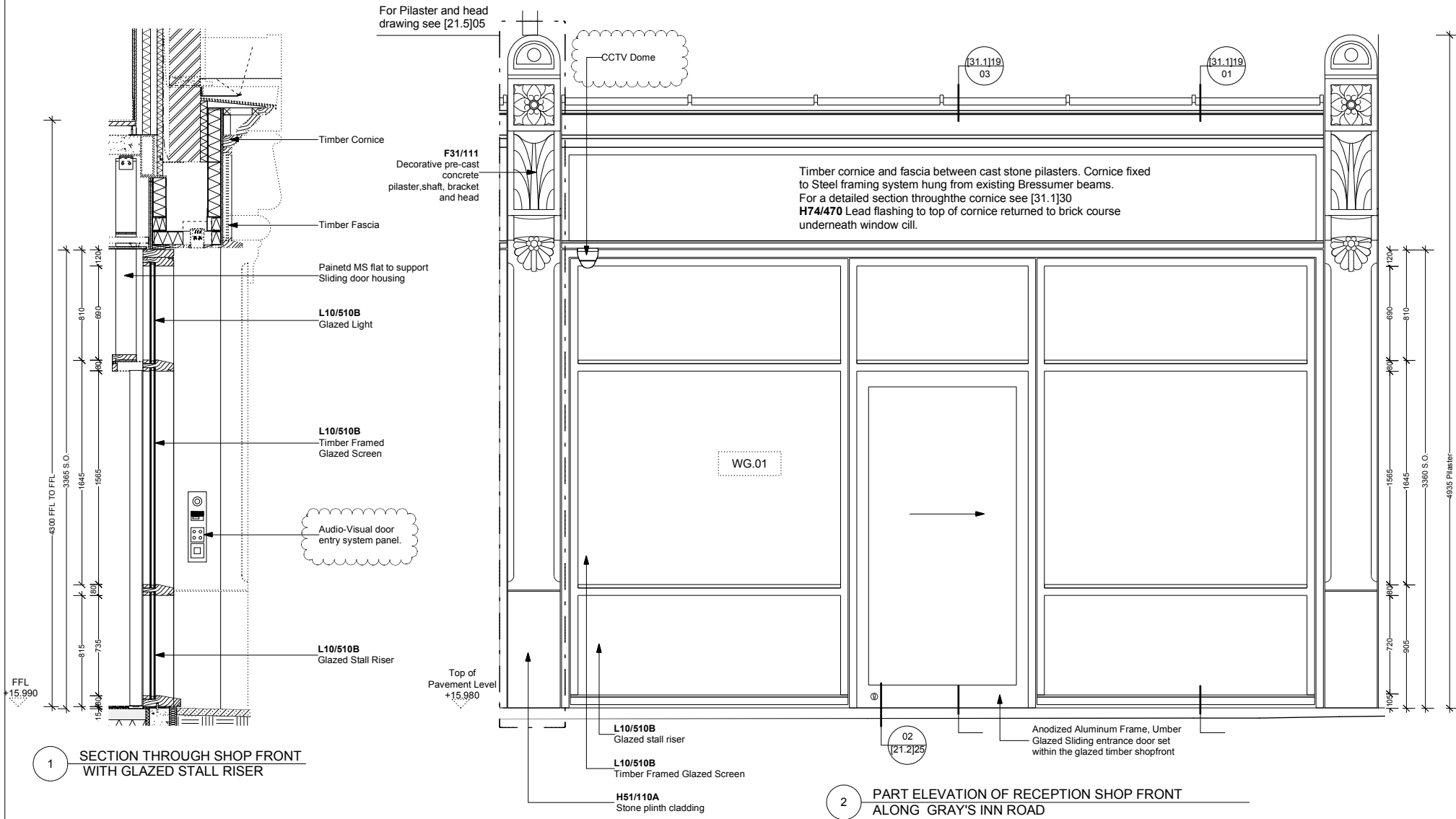
All sizes are indicative at present.

The width of the bays vary throughout the building.

Level of detail and dimensions to be confirmed on site by the SC in agreement with the architect.

Timber cornice:  
Timber to be external grade European softwood or similar.  
Timber grade to be min J30 in accordance with BS EN 14220:2006.  
Timber preservative treatment to be in accordance with BS EN 942.  
External arrises to be softened by a 2mm. edge.

All coatings to timber to be in accordance with the performance requirements in BS 644.  
Colour to be confirmed.



B	DOR	AV	28/11/2014	CCTV and Access Control added. Issued for Discharge of planning condition
A	DOR	AV	14/02/2014	Issued to discharge planning condition
Issue	Chkd	Drawn	Date	Description

Status	Job No.	Drwg No.	Issue
CONSTRUCTION	0706	[31.1]19	B

Drawing  
GROUND FLOOR SCREENS  
RECEPTION  
Project  
THE LIGHTHOUSE BLOCK  
LONDON WC1X

Scale\_1:20@A1 Scale\_1:40@A3

latitude

Latitude Architects  
15 Weller Street  
London SE1 1QU  
T +44 (0) 20 7234 0235  
F +44 (0) 20 7234 0245  
www.latitudearchitects.com