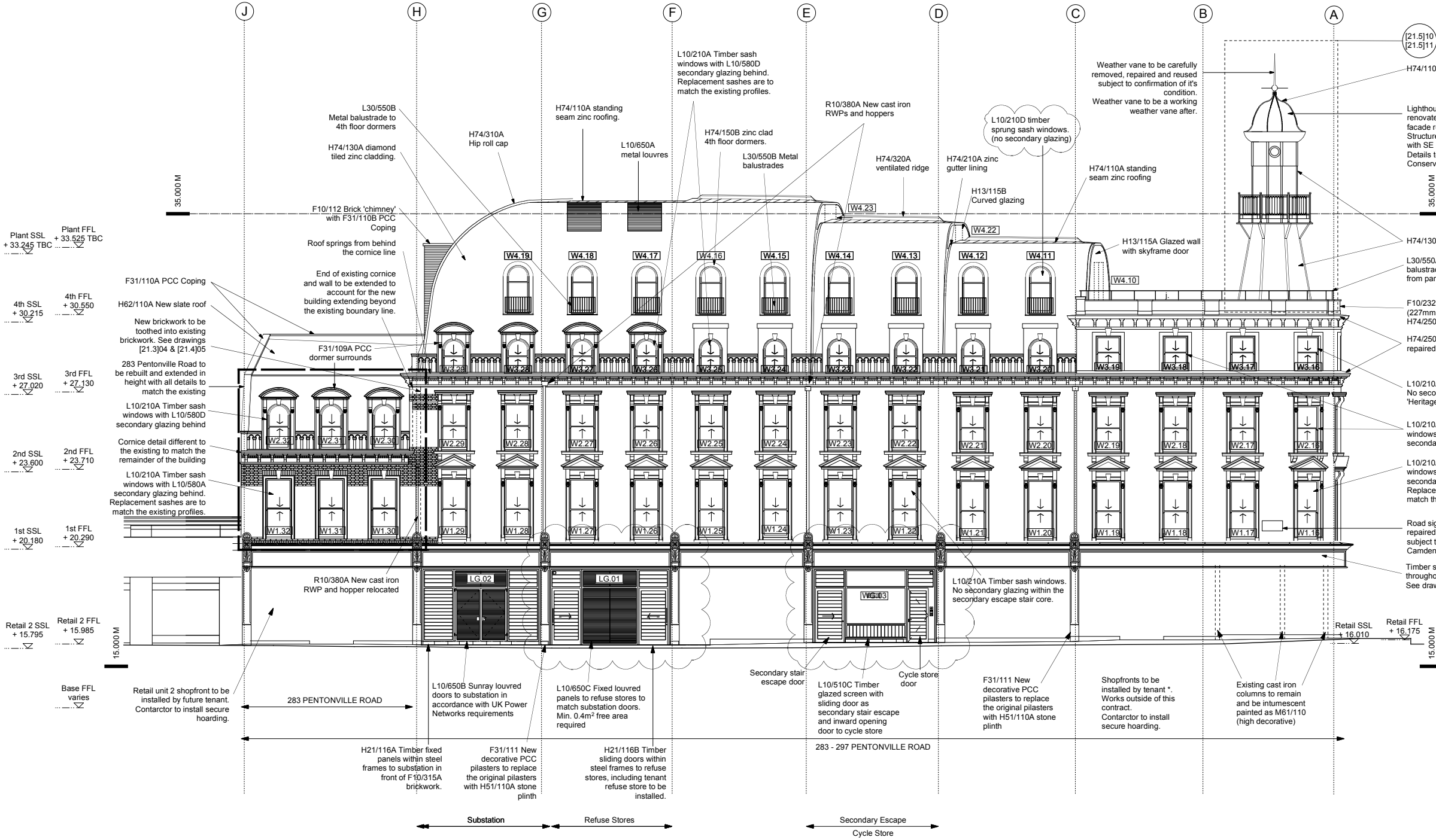
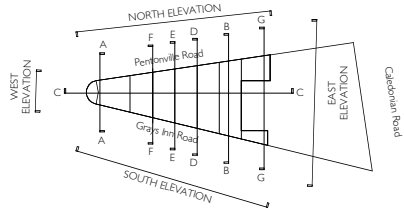


* NOTE:
Levels quoted are related to the OS bench mark detailed in the bottom right hand corner of the Micheal Gallie survey drawings (value 17.48m).
High accuracy static GPS carried out in June 2011 was used to orientate the drawings to the OS grid.
The GPS heights were found to be 50mm higher than the bench mark related levels.
This was verified using spirit levelling between the bench mark and new control stations.

GENERAL NOTES
Drawing to be read in conjunction with all information by architects, structural engineer & service consultants.
The contractor is not to scale from this drawing. All written dimensions to be checked on site before work commences. Discrepancies, where identified, must be reported to the architect immediately.
This drawing is the property of Latitude Architects and Designers and must not be reproduced or disclosed to any unauthorised person either wholly or in part without written consent.



| | | | | |
|-------|------|-------|------------|-----------------------------------------------------------------------------------------------------------|
| J | | AV | 28/11/2014 | CCTV locations added, 4th floor windows amended. Cornice and Shopfronts updated. Roof louvres reinstated. |
| I | AV | DOR | 16/02/2014 | Issued to discharge planning condition |
| H | AV | DOR | 07/10/2013 | Construction Issue. Upstands & detail added to shop fronts. Dormer & new window positions relocated. |
| G | DOR | BG | 18/05/2012 | Notes amended |
| F | DOR | DOR | 19/12/2011 | 4th floor terrace balustrade revised |
| E | DOR | DOR | 09/12/2011 | Notes amended |
| D | AV | DOR | 25/11/2011 | Issued for tender |
| C | DOR | AV | 13/10/2011 | Updated for revised planning application |
| B | DOR | BG | 23/09/2011 | Issued for costing |
| A | DOR | x | 09/03/2011 | Preliminary issue |
| Issue | Chkd | Drawn | Date | Description |

| | | | |
|--------------|---------|----------|-------|
| Status | Job No. | Drwg No. | Issue |
| CONSTRUCTION | 0706 | [15.2]02 | J |

Drawing
PROPOSED NORTH ELEVATION
PENTONVILLE ROAD
Project
THE LIGHTHOUSE BLOCK
LONDON WC1X