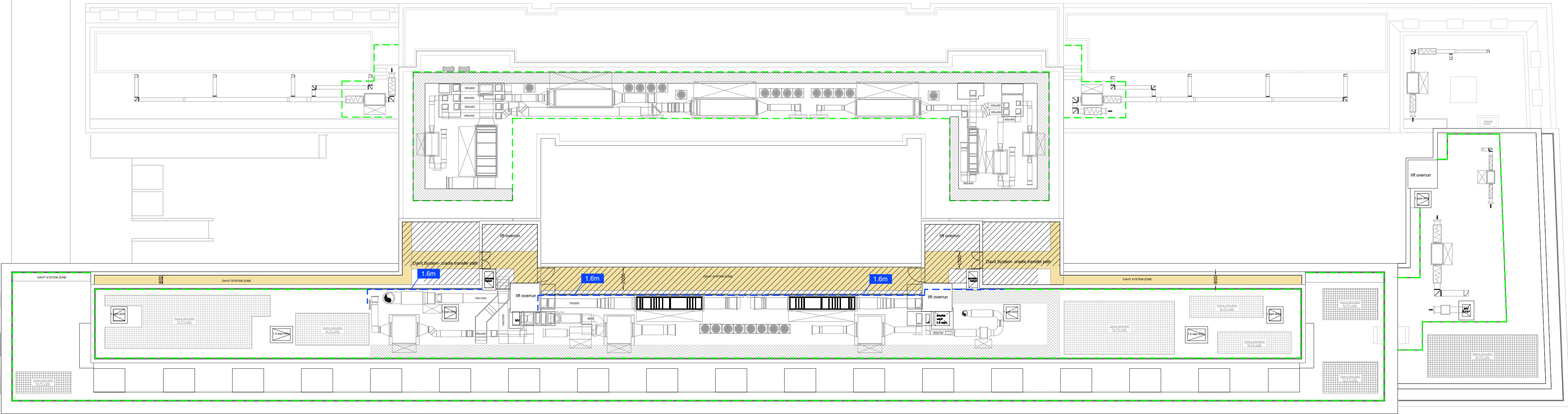
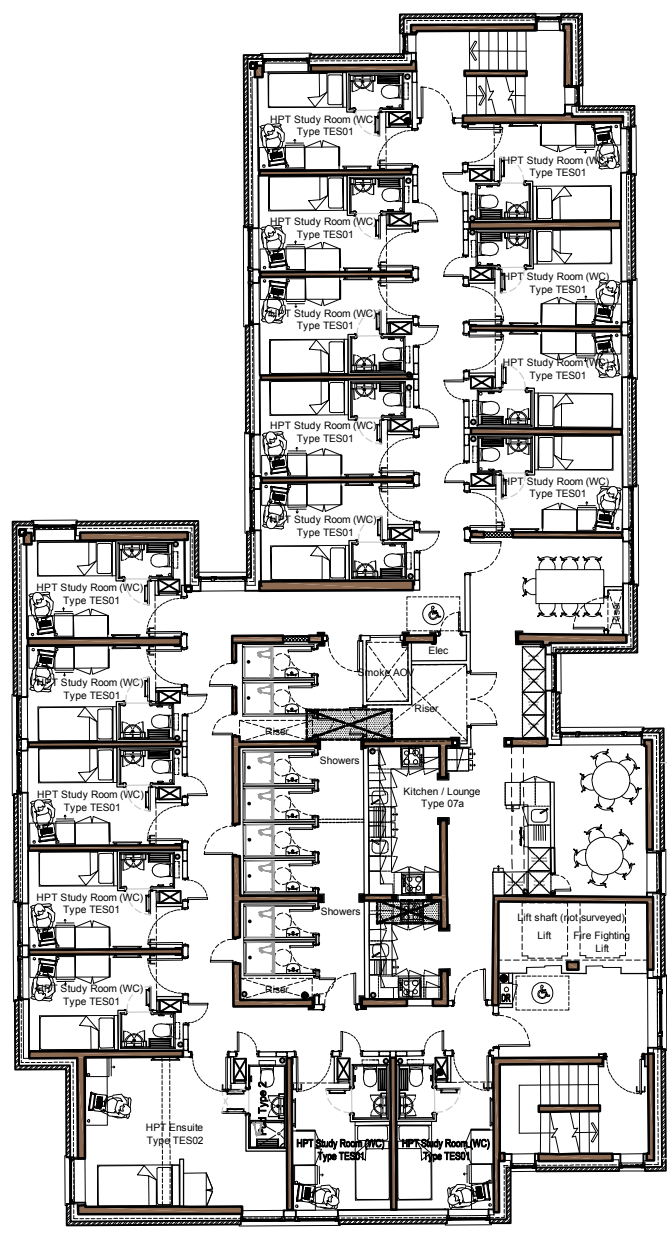
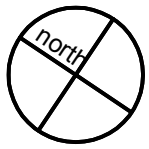


NOTES:
DO NOT SCALE. FIGURED DIMENSIONS ONLY TO BE TAKEN FROM THIS DRAWING. CHECK DIMENSIONS ON SITE AND REPORT DISCREPANCIES TO THE ARCHITECT.
THIS DRAWING IS PROTECTED BY COPYRIGHT.
ALL AREAS HAVE BEEN MEASURED FROM CURRENT DRAWINGS. THEY MAY VARY BECAUSE OF (EG) SURVEY, DESIGN DEVELOPMENT, CONSTRUCTION TOLERANCES, STATUTORY REQUIREMENTS OR RE-DEFINITION OF THE AREAS TO BE MEASURED.



P6	16.10.14	Roof plant layout updated, line of handrails and plant screen shown	RM	AR
P5	27.03.24	revision tags and change log added	RCR	RM
P4	26.03.14	REGULARIZATION ISSUE - refer to change log	RCR	RM
P3	07.01.14	REVISED TO FULLY CO-ORDINATED PLANS	RCR	RM
P2	10.04.13	REVISED IN LINE WITH CASE OFFICER COMMENTS	SM	NM
P1	15.03.13	FOR PLANNING	SM	NM
No.	Date	Comment	Drawn	Chkd

Issue Status

PLANNING

tp bennett

architecture
interiors
planning

One America Street London SE1 0NE UK +44 (0) 20 7208 2000 www.tpbennt.com
London Moscow Abu Dhabi New York

Project

Proposed
University of London
Cartwright Gardens, London

Drawing Title

Proposed Plans
9th Floor Plan

Drawn	Date	Scale @ A1/A3	Alt. Ref.
SM	nov 2012	1:200/1:400	—

tp bennett Project No.	Drawing Number	Rev
A10417	D 0109	P6

Key

1.6m

Plant Screen - Inverted louvre with height above parapet shown. Colour to be oyster white, RAL 1013

Handrail - 1.1m above roof level

Maintenance Walkways

