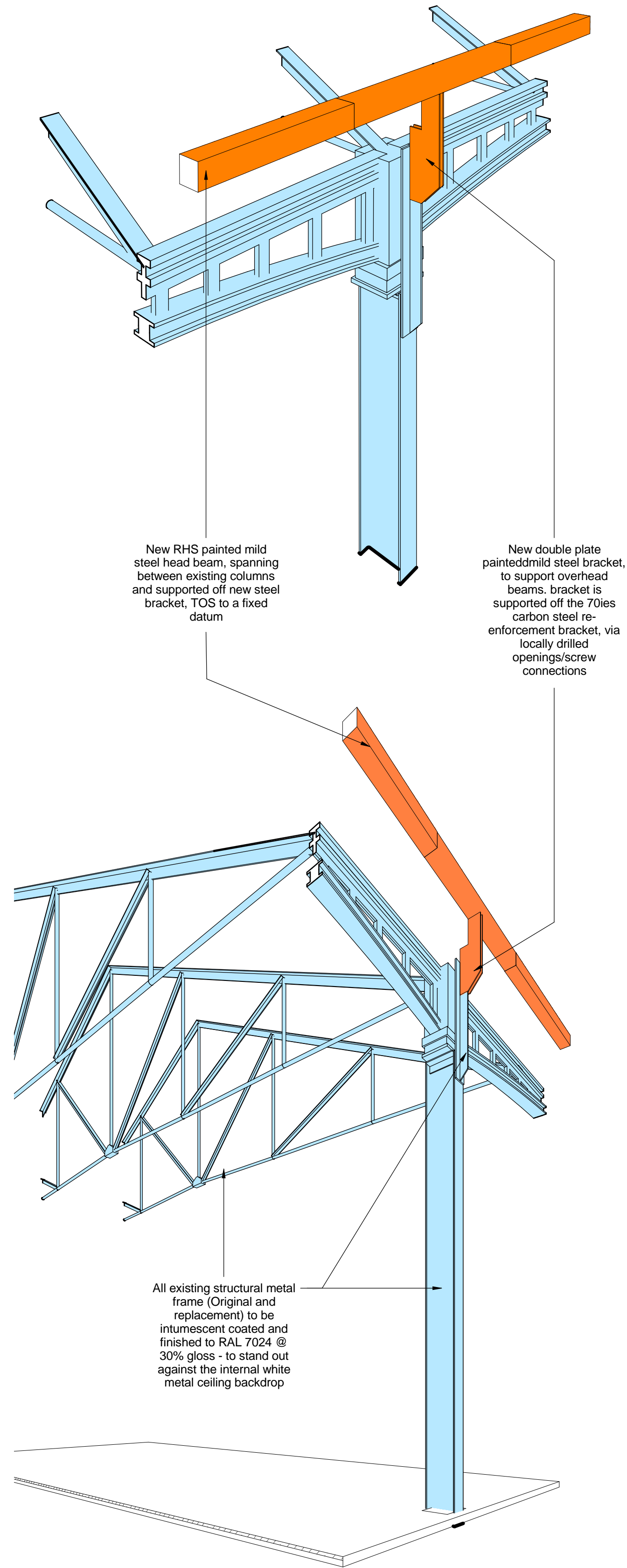
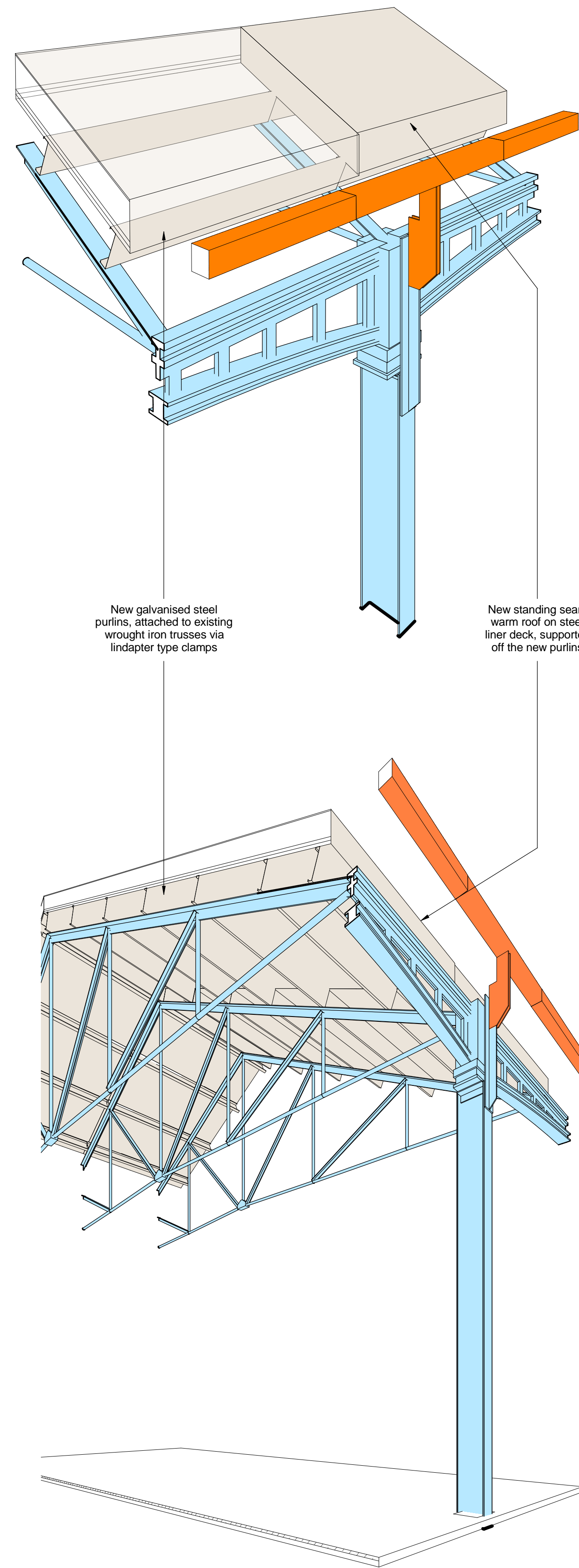


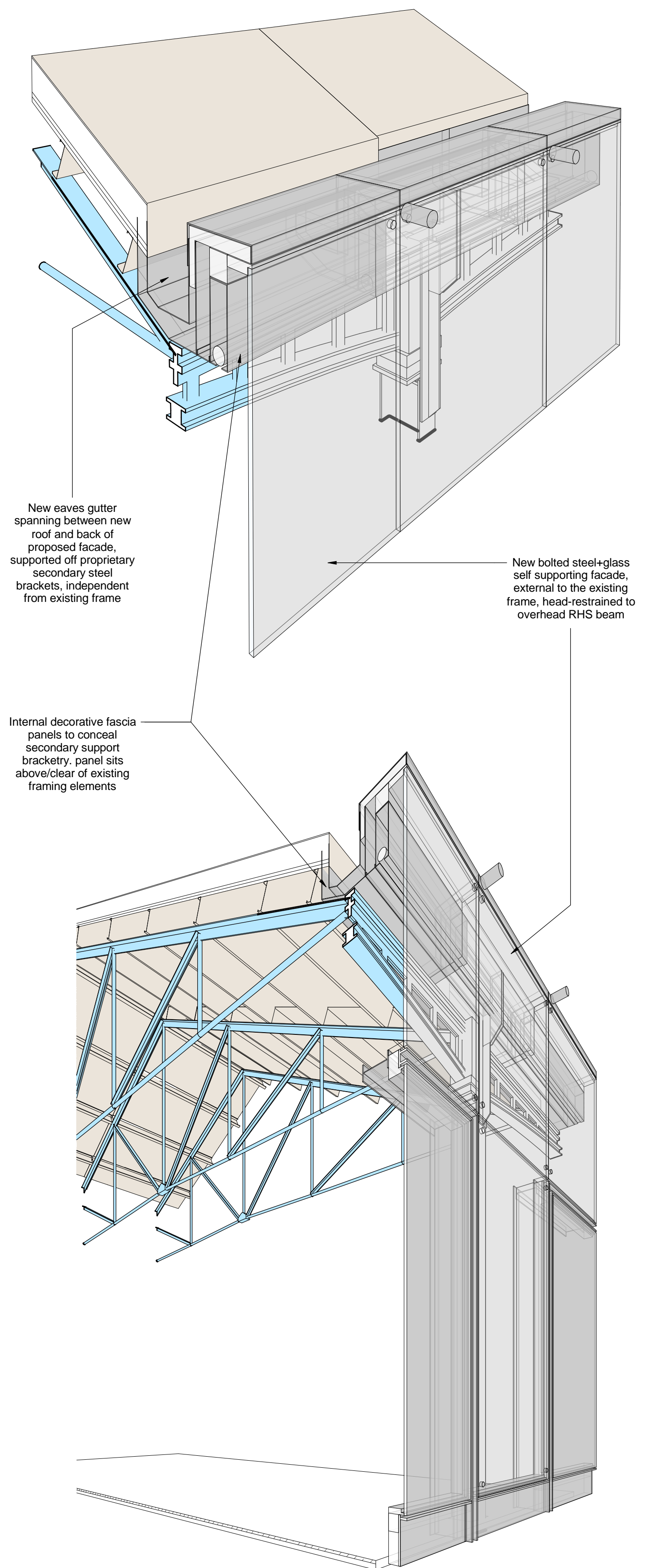
1 - Existing building frame and roof



2 - New primary head steel and bracket



3 - New Roof and purlins



4 - New Cladding

Revisions	By	Chk	Revisions	
1	27/10/2014	Issued for information	FM	EM
A	29/10/2014	Issued for information	FM	EM

By	Chk	Notes

By	Chk	Notes

By	Chk	Notes

By	Chk	Notes

By	Chk	Notes

By	Chk	Notes

By	Chk	Notes

By	Chk	Notes

Bennetts Associates Architects
 1 Rawstone Place London EC1V 7NL
 T +44 (0) 20 7520 3300 F +44 (0) 20 7520 3333
 E mail@bennettsassociates.com
 For Bennetts Associates' electronic information issue disclaimer -
www.bennettsassociates.com/information/disclaimer/

Project
Midland Goods Shed
 Argent

Project No. 0613

Drawing Title
 Cladding type C1 Axo sequence

Drawing Number
 0613(SK)608

Revision
 A

SKETCH | DESIGN INTENT

Scale @ A3

Scale @ A1

Revision Date
 14 10 29

YY MM DD