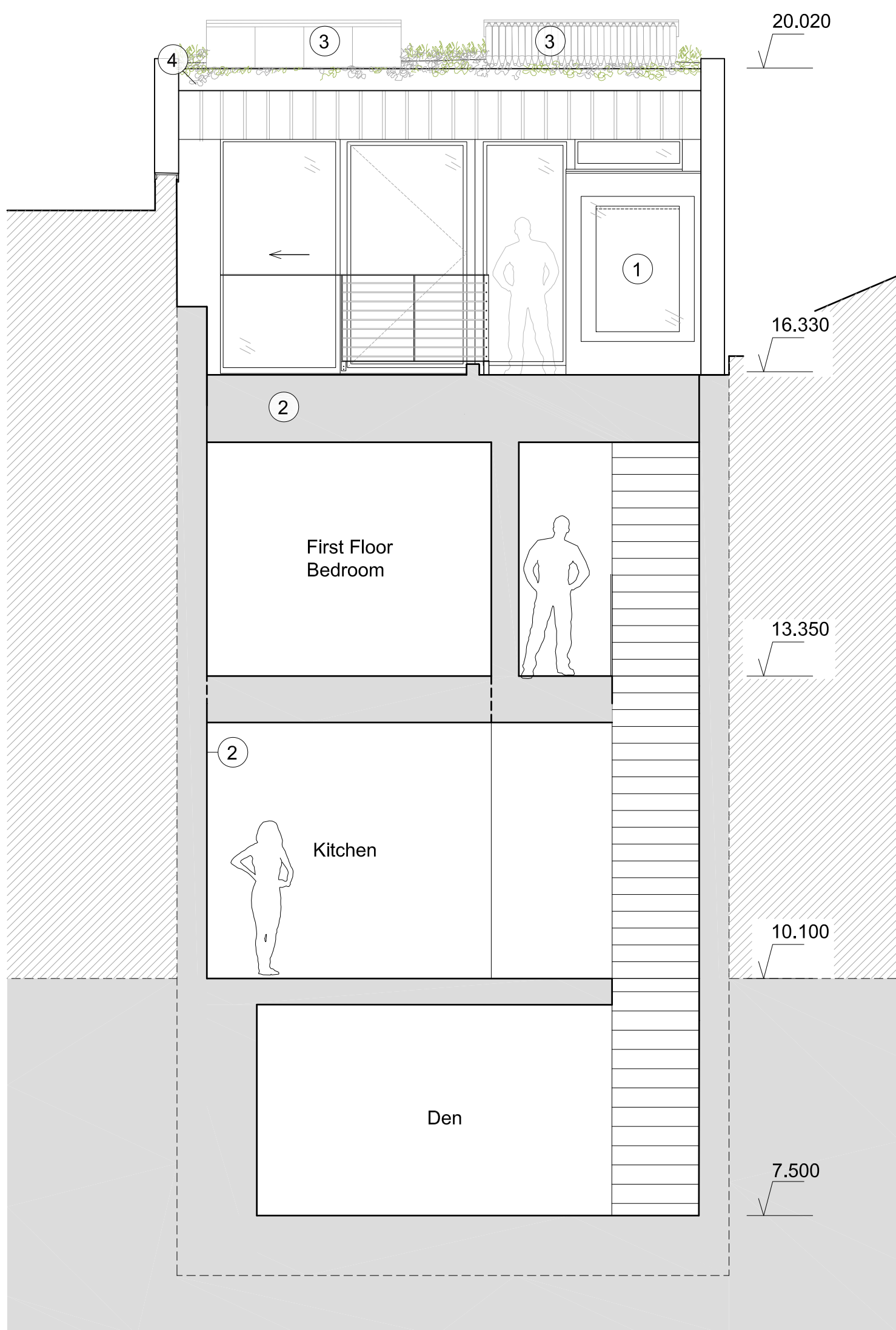


Section AA

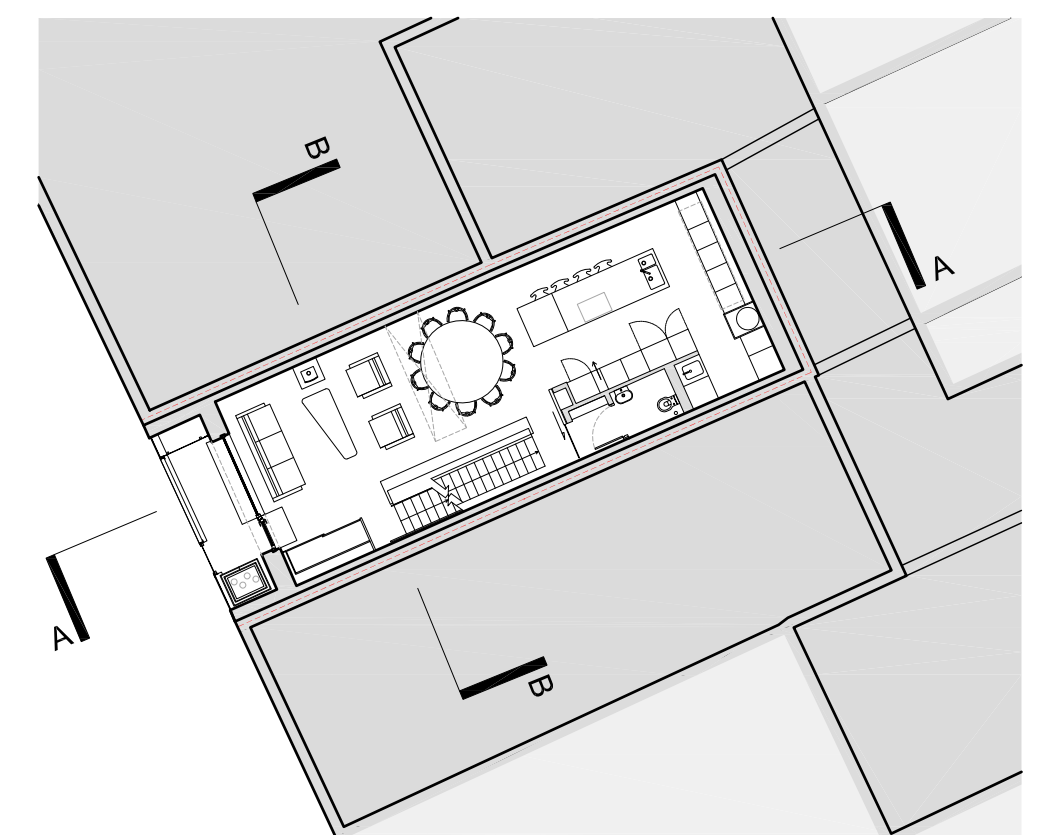
Section AA

- 1 Rooflights to First and Ground floors
- 2 Triple Glazed Passivhaus Windows
- 3 Highly Insulated Walls, Floor and Roof to meet the Passivhaus Standard.
- 4 Solar Collectors Renewable Energy for Hot Water.
- 5 Meadow planting or sedum mix as appropriate, designed by Dusty Gedge
- 6 Brick Facade, handmade bricks
- 7 Lightwell
- 8 Triple Glazed structural rooflight
- 9 Stairwell to Second Floor
- 10 Stainless Steel Mesh Screen
- 11 Cycle Store



Section BB

- 1 Triple Glazed Passivhaus Windows
- 2 Highly Insulated Walls, Floor and Roof to Meet the Passivhaus Standard.
- 3 Solar Collectors Renewable Energy for Hot Water.
- 4 Meadow planting or sedum mix as appropriate, designed by Dusty Gedge



Rev	Description	Date	By	Chk
A	Planning Issue	20.07.12	CS	JB
B	Revised Ground Floor Elevation	04.10.12	CS	JB
C	Exercise Room Revision	08.10.12	CS	JB
D	Revised Ceiling Heights	15.10.12	CS	JB
E	Revised Rear Elevation	16.10.12	CS	JB
F	Updated to altered design	29.08.13	SD	TB
G	Updated to altered design	12.09.14	JC	TB
H	Fencing to lightwell shown Fencing providing guarding at party wall	23.10.14	LW	--

Proposed

Project: 398km 25 King's Mews

Subject: Section AA
Section BB

Scale: 1:50 @ A1

Date: 10.01.12

bere:architects

73 Poets Road, London, N5 2SH
T +44 (0) 20 7359 4503 F +44 (0) 20 7424 5572 bere@bere.co.uk

Project Drawing Rev

0398.B5.G20.s00 H