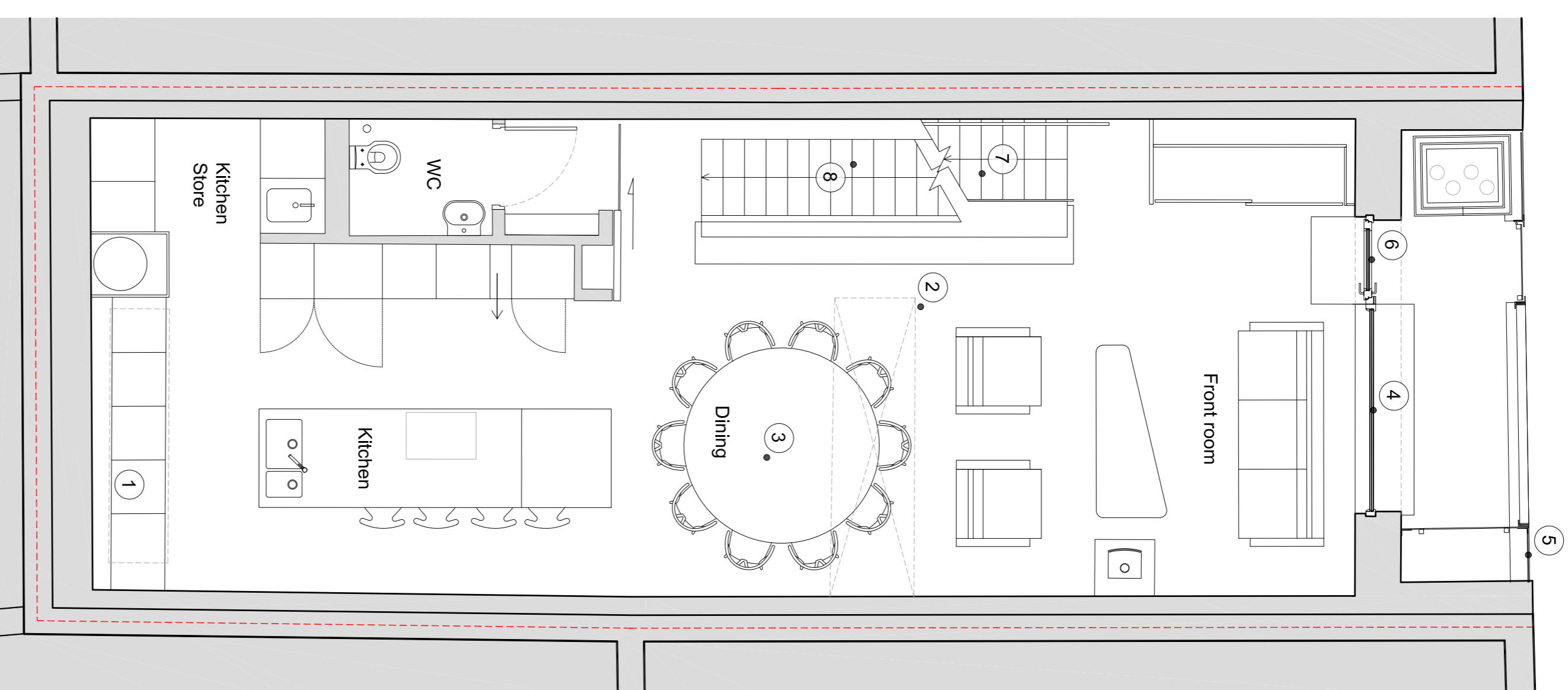


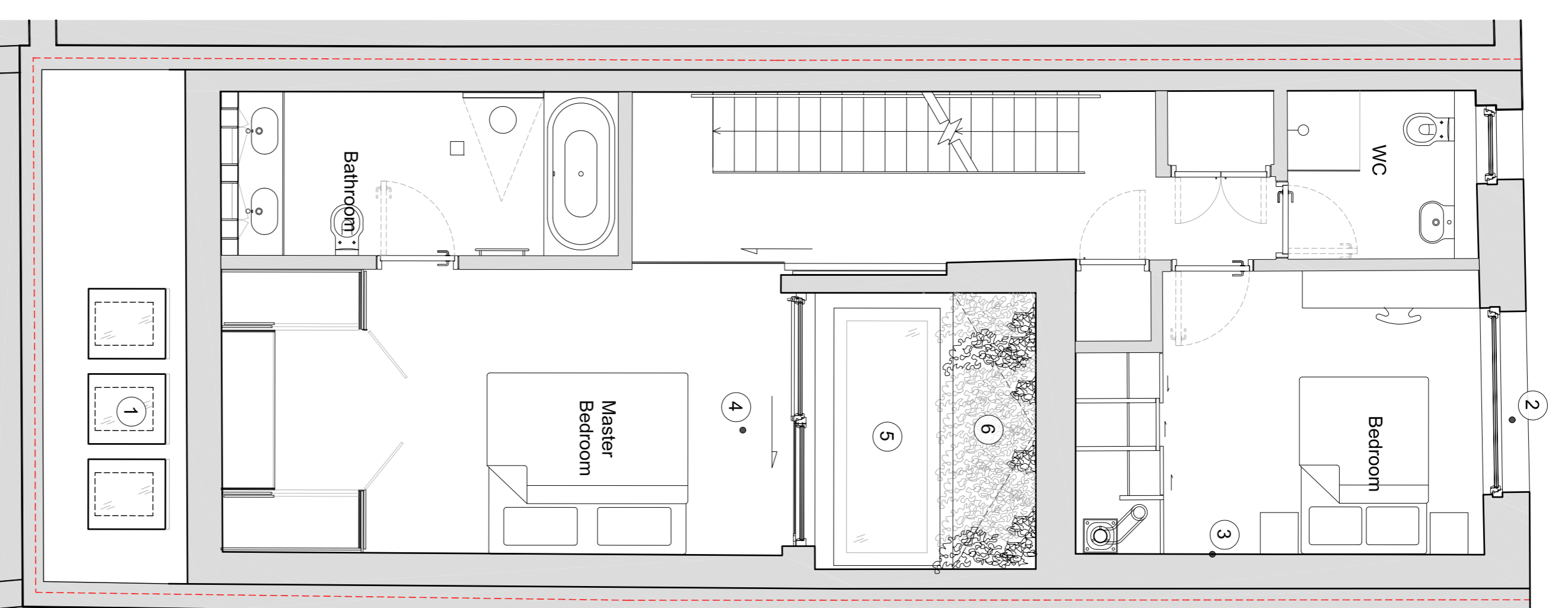
Lower Ground Floor

- 1 Lightwell
- 2 Stairs to ground floor



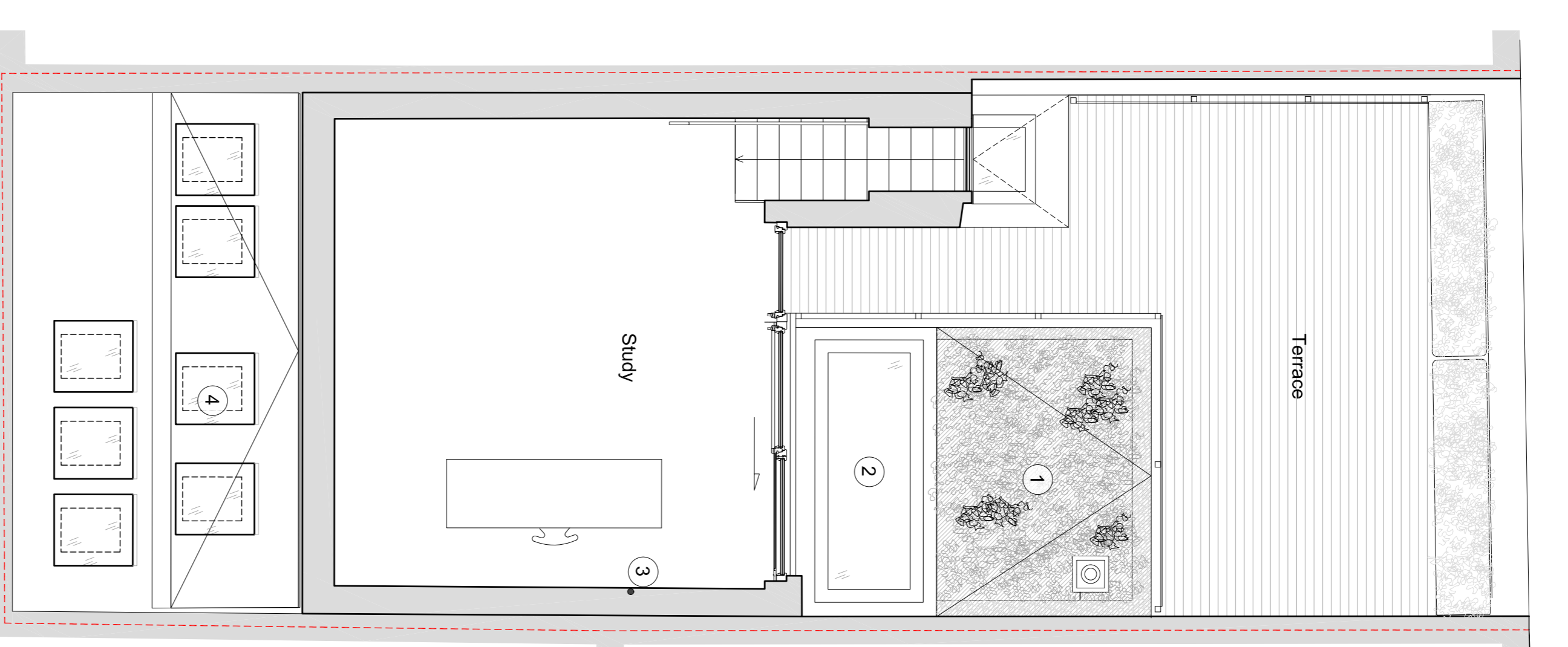
Ground Floor

- 1 Lightwell Above
- 2 Rooflight above
- 3 Knock out panel to provide lift to first floor master bedroom.
- 4 Triple Glazed Passivhaus Windows
- 5 Locked bin store
- 6 Thermally insulated passivhaus timber door
- 7 Stairs to First floor
- 8 Stairs from LG floor



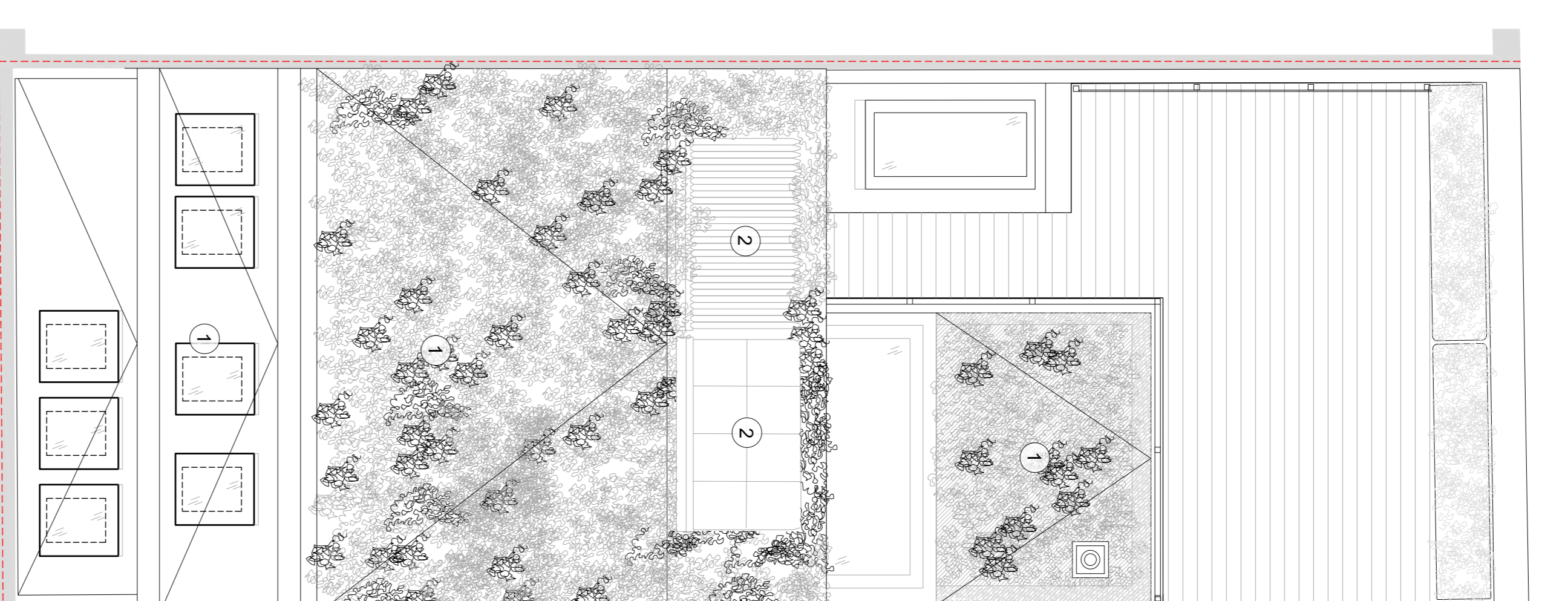
First Floor

- 1 Lightwell to ground floor
- 2 Triple Glazed Passivhaus Windows
- 3 Highly Insulated Walls, Floor and Roof to Meet the Passivhaus Standard.
- 4 Space for knock out panel for lift from ground floor
- 5 Rooflight to ground floor
- 6 Meadow planting or sedum mix as appropriate, designed by Dusty Gedge



Second Floor

- 1 Meadow planting or sedum mix as appropriate, designed by Dusty Gedge
- 2 Triple Glazed Passivhaus Windows
- 3 Highly Insulated Walls, Floor and Roof to Meet the Passivhaus Standard.
- 4 Roof Light to First Floor

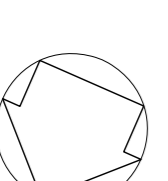
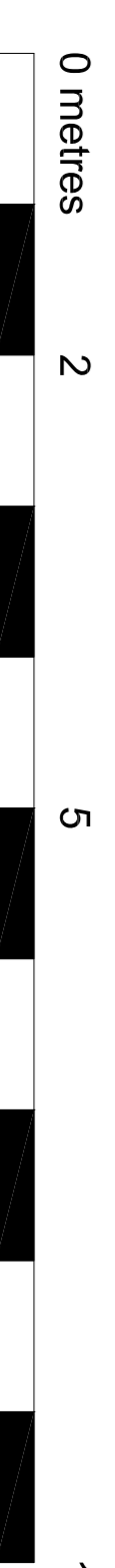


Roof Plan

- 1 Meadow planting or sedum mix as appropriate, designed by Dusty Gedge
- 2 Solar Thermal and electric Collectors

1	Use figured dimensions only	Rev	Description	Date	By	CHK
1	Drawings to be checked on site and the architect to be informed of any discrepancies before construction commences	A	Plotting Issue	20.07.12	CS	ag
2	All references to drawings refer to current revision of that drawing	B	Plotting Revision	12.11.12	CS	ag
3	Structural and services information shown is indicative only. Refer to relevant drawings for detailed design	C	Plotting Revision	12.11.12	CS	ag
4	All work and materials to be in accordance with current applicable statutory legislation and to comply with all relevant codes of practice and British and European standards	D	Plotting Revision	12.11.12	CS	ag
5	At work and materials to be in accordance with current applicable statutory legislation and to comply with all relevant codes of practice and British and European standards	E	Plotting Revision	12.11.12	CS	ag
6	At work and materials to be in accordance with current applicable statutory legislation and to comply with all relevant codes of practice and British and European standards	F	Plotting Revision	12.11.12	CS	ag
7	At work and materials to be in accordance with current applicable statutory legislation and to comply with all relevant codes of practice and British and European standards	G	Plotting Revision	12.11.12	CS	ag
8	At work and materials to be in accordance with current applicable statutory legislation and to comply with all relevant codes of practice and British and European standards	H	Plotting Revision	12.11.12	CS	ag
9	At work and materials to be in accordance with current applicable statutory legislation and to comply with all relevant codes of practice and British and European standards	I	Plotting Revision	12.11.12	CS	ag
10	At work and materials to be in accordance with current applicable statutory legislation and to comply with all relevant codes of practice and British and European standards	J	Plotting Revision	12.11.12	CS	ag
11	At work and materials to be in accordance with current applicable statutory legislation and to comply with all relevant codes of practice and British and European standards	K	Plotting Revision	12.11.12	CS	ag
12	At work and materials to be in accordance with current applicable statutory legislation and to comply with all relevant codes of practice and British and European standards	L	Plotting Revision	12.11.12	CS	ag
13	At work and materials to be in accordance with current applicable statutory legislation and to comply with all relevant codes of practice and British and European standards	M	Plotting Revision	12.11.12	CS	ag
14	At work and materials to be in accordance with current applicable statutory legislation and to comply with all relevant codes of practice and British and European standards	N	Plotting Revision	12.11.12	CS	ag
15	At work and materials to be in accordance with current applicable statutory legislation and to comply with all relevant codes of practice and British and European standards	O	Plotting Revision	12.11.12	CS	ag
16	At work and materials to be in accordance with current applicable statutory legislation and to comply with all relevant codes of practice and British and European standards	P	Plotting Revision	12.11.12	CS	ag
17	At work and materials to be in accordance with current applicable statutory legislation and to comply with all relevant codes of practice and British and European standards	Q	Plotting Revision	12.11.12	CS	ag
18	At work and materials to be in accordance with current applicable statutory legislation and to comply with all relevant codes of practice and British and European standards	R	Plotting Revision	12.11.12	CS	ag
19	At work and materials to be in accordance with current applicable statutory legislation and to comply with all relevant codes of practice and British and European standards	S	Plotting Revision	12.11.12	CS	ag
20	At work and materials to be in accordance with current applicable statutory legislation and to comply with all relevant codes of practice and British and European standards	T	Plotting Revision	12.11.12	CS	ag
21	At work and materials to be in accordance with current applicable statutory legislation and to comply with all relevant codes of practice and British and European standards	U	Plotting Revision	12.11.12	CS	ag
22	At work and materials to be in accordance with current applicable statutory legislation and to comply with all relevant codes of practice and British and European standards	V	Plotting Revision	12.11.12	CS	ag
23	At work and materials to be in accordance with current applicable statutory legislation and to comply with all relevant codes of practice and British and European standards	W	Plotting Revision	12.11.12	CS	ag
24	At work and materials to be in accordance with current applicable statutory legislation and to comply with all relevant codes of practice and British and European standards	X	Plotting Revision	12.11.12	CS	ag
25	At work and materials to be in accordance with current applicable statutory legislation and to comply with all relevant codes of practice and British and European standards	Y	Plotting Revision	12.11.12	CS	ag
26	At work and materials to be in accordance with current applicable statutory legislation and to comply with all relevant codes of practice and British and European standards	Z	Plotting Revision	12.11.12	CS	ag

DASHED RED LINE INDICATES CENTRE OF PARTY WALL / SITE BOUNDARY



Project: 398km 25 King's Mews

Subject: Plans
L.G., G., 1, 2, Roof

Scale: 1:50 @ A1

Date: 20.07.12

bere.architects

73 Pears Road, London, NE 28H
T +44 (0)20 7359 5551 F +44 (0)20 7424 5572 ber@bere.co.uk

Project | Drawing

0398.B5.G20.P00 H