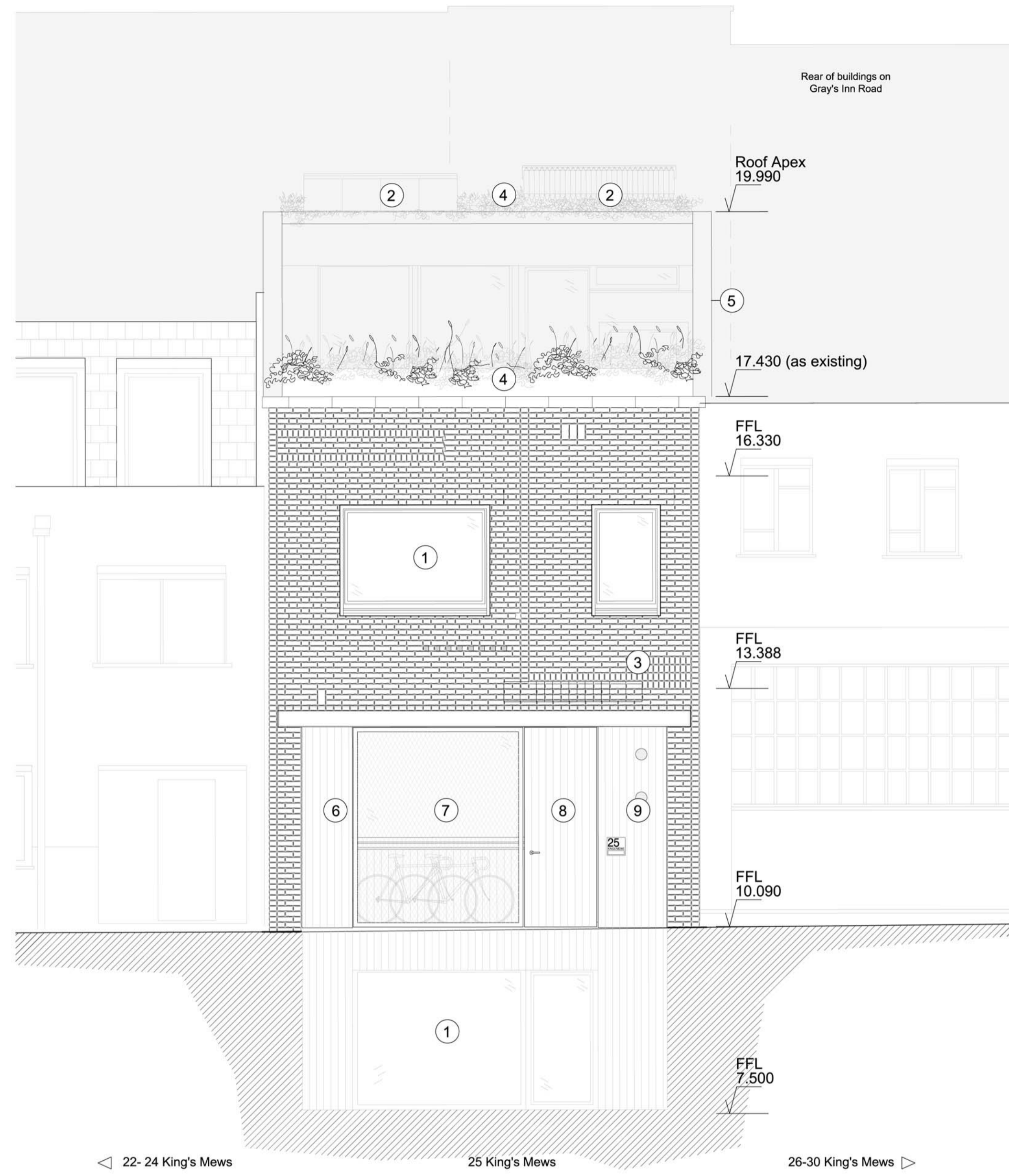


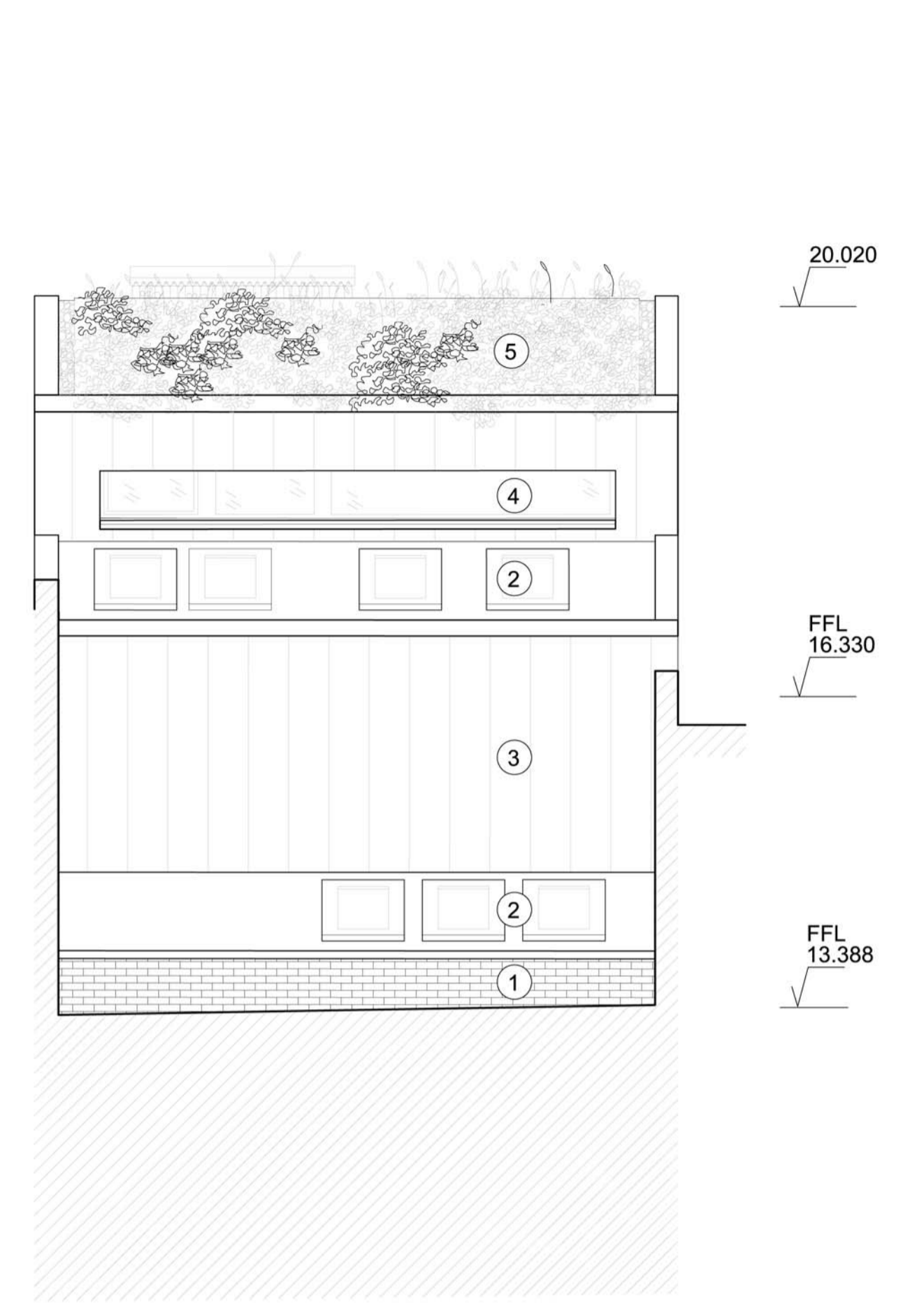
Street Elevation (West)
in context of existing situation



Front Elevation (Coloured)
in context of neighbouring proposed developments



Rear Elevation (East)
in context of existing situation



- 1 Existing Rear Parapet Wall
- 2 Rooflights
- 3 Zinc Cladding
- 4 Triple Glazed Passivhaus Windows
- 5 Meadow planting or sedum mix as appropriate, designed by Dusty Gedge

- 1 Triple Glazed Passivhaus Windows
- 2 Solar Collectors Renewable Energy for Hot Water.
- 3 Brick Facade, handmade bricks.
- 4 Planting in a planter for Biodiversity.
- 5 Set back Second Floor
- 6 Blackened hardwood timber door, bin store behind
- 7 Wire mesh screen, cycle store behind
- 8 Blackened hardwood timber gate, Passivhaus entrance door behind
- 9 Blackened hardwood timber panel



Rev	Description	Date	By	Chk
A	Planning Issue	20.07.12	CS	JB
B	Ground Floor Elevation Revision	04.10.12	CS	JB
C	Floor Level Revision	15.10.12	CS	JB
D	Brickwork Amended on Line diag	16.10.12	CS	JB
E	Rear Elevation Amended	16.10.12	LK	CS
F	All Elevations Amended	02.08.13	TB	JB
G	Revised to Current Plans	12.09.14	JC	JB
H	Brickwork updated	23.10.14	LW	---

PROPOSED

Project: 25 King's Mews
Subject: Elevations
Scale: 1:50 @ A1
Date: 13.06.12

bere:architects
73 Poets Road, London, N5 2SH
T +44 (0) 20 7359 4503 F +44 (0) 20 7424 5572 bere@bere.co.uk
Project Drawing Rev
0398.B5.G20.E00 H