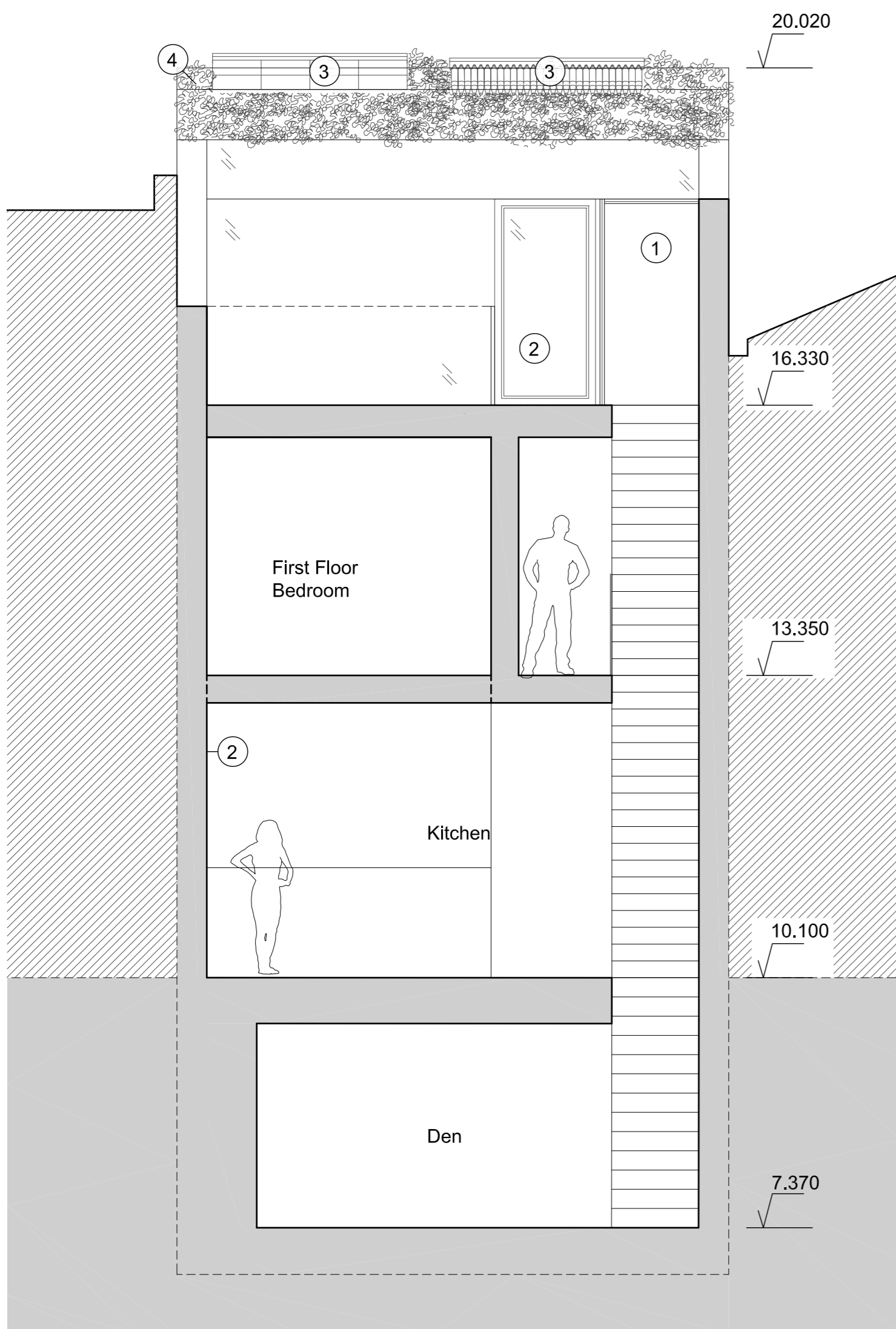


Section AA

5.00 Datum

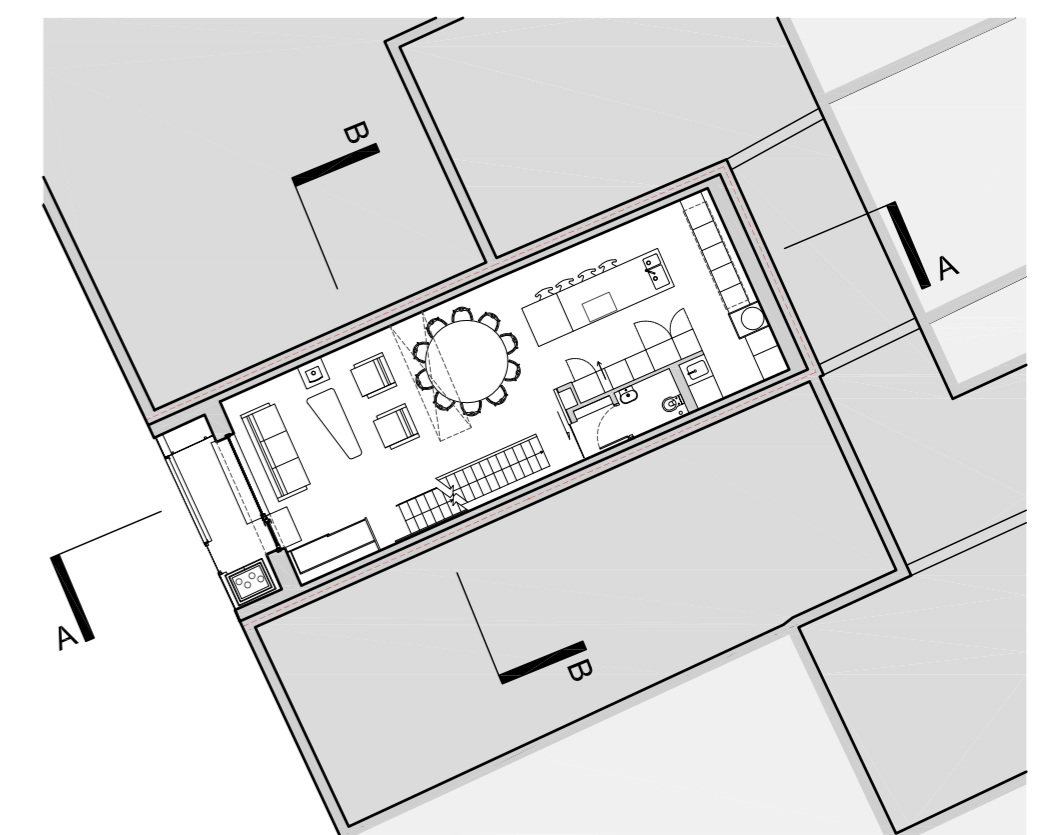
Section AA

- 1 Lightwell to First and ground floor
- 2 Triple Glazed Passivhaus Windows
- 3 Highly Insulated Walls, Floor and Roof to Meet the Passivhaus Standard.
- 4 Solar Collectors Renewable Energy for Hot Water.
- 5 Native Planting for Biodiversity.
- 6 London Stock Brick Facade
- 7 Lightwell
- 8 Triple Glazed structural rooflight
- 9 Glazed stairwell
- 10 Stainless Steel Mesh Screen
- 11 Cycle Store



Section BB

- 1 Triple Glazed Passivhaus Windows
- 2 Highly Insulated Walls, Floor and Roof to Meet the Passivhaus Standard.
- 3 Solar Collectors Renewable Energy for Hot Water.
- 4 Native Planting for Biodiversity.



Rev	Description	Date	By	Chk
A	Planning Issue	20.07.12	CS	JB
B	Revised Ground Floor Elevation	04.10.12	CS	JB
C	Exercise Room Revision	08.10.12	CS	JB
D	Revised Ceiling Heights	15.10.12	CS	JB
E	Revised Rear Elevation	15.10.12	CS	JB
F	Updated to altered design	29.08.13	SD	TB

Proposed

Project: 398km 25 King's Mews
Subject: Section AA
 Section BB
Scale: 1:50 @ A1
Date: 10.01.12

bere:architects
 73 Poets Road, London, N5 2SH
 T +44 (0) 20 7359 4503 F +44 (0) 20 7424 5572 bere@bere.co.uk
 Project | Drawing | Rev
0398.B5.G20.s00 F