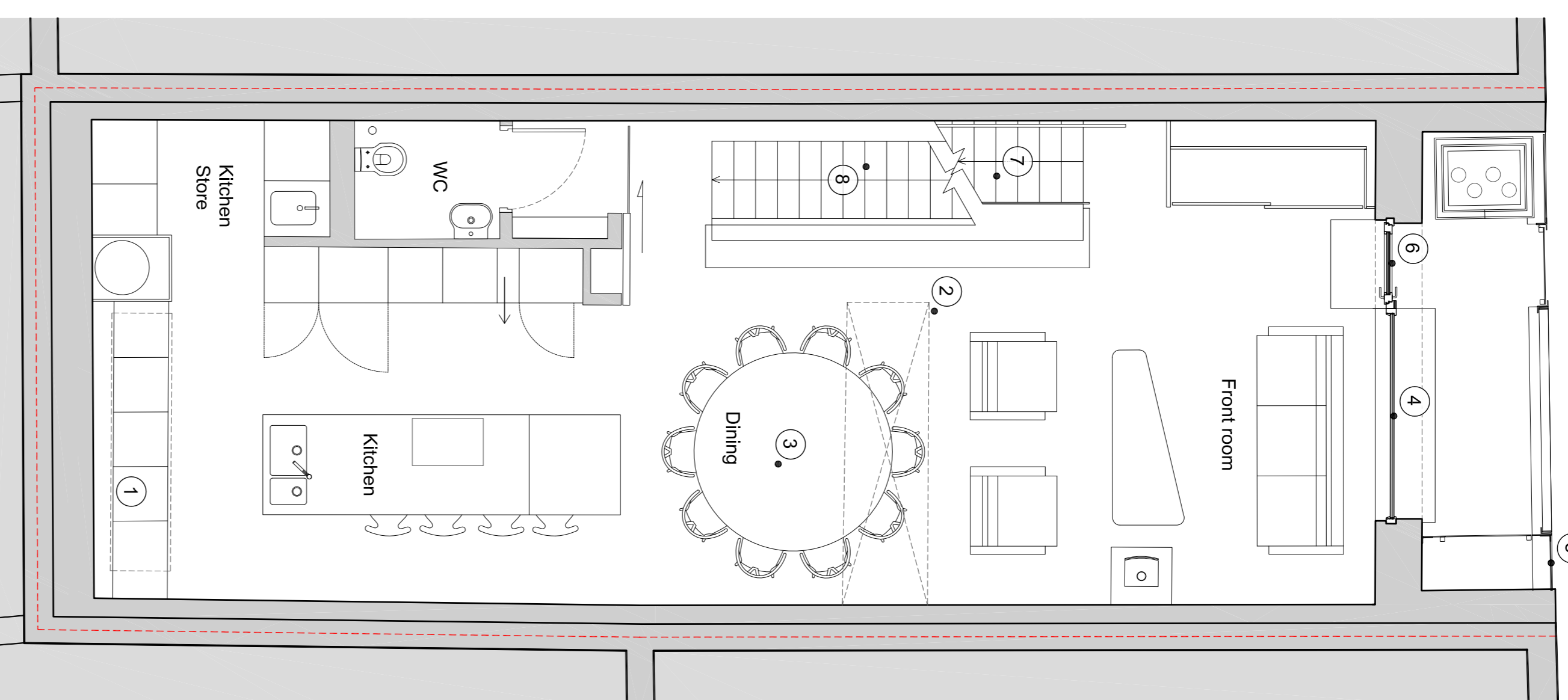


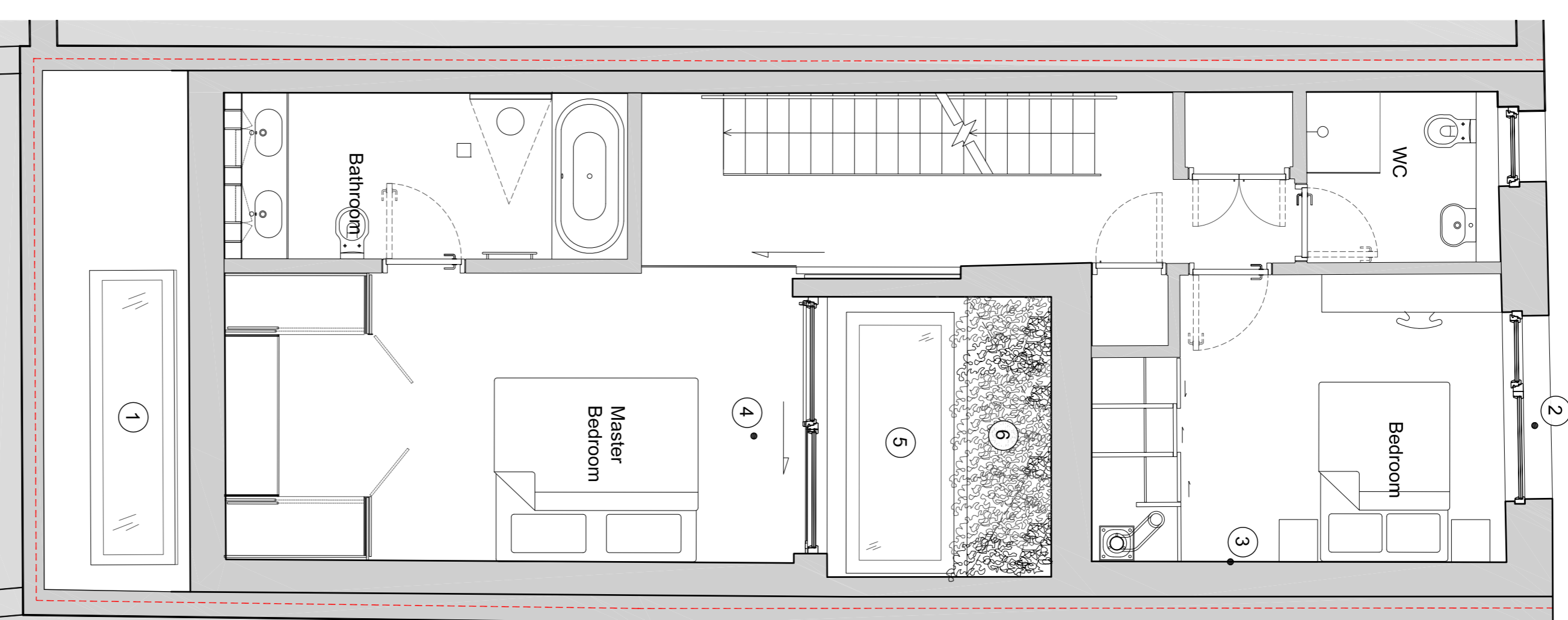
Lower Ground Floor

- 1 Lightwell
- 2 Stairs to ground floor



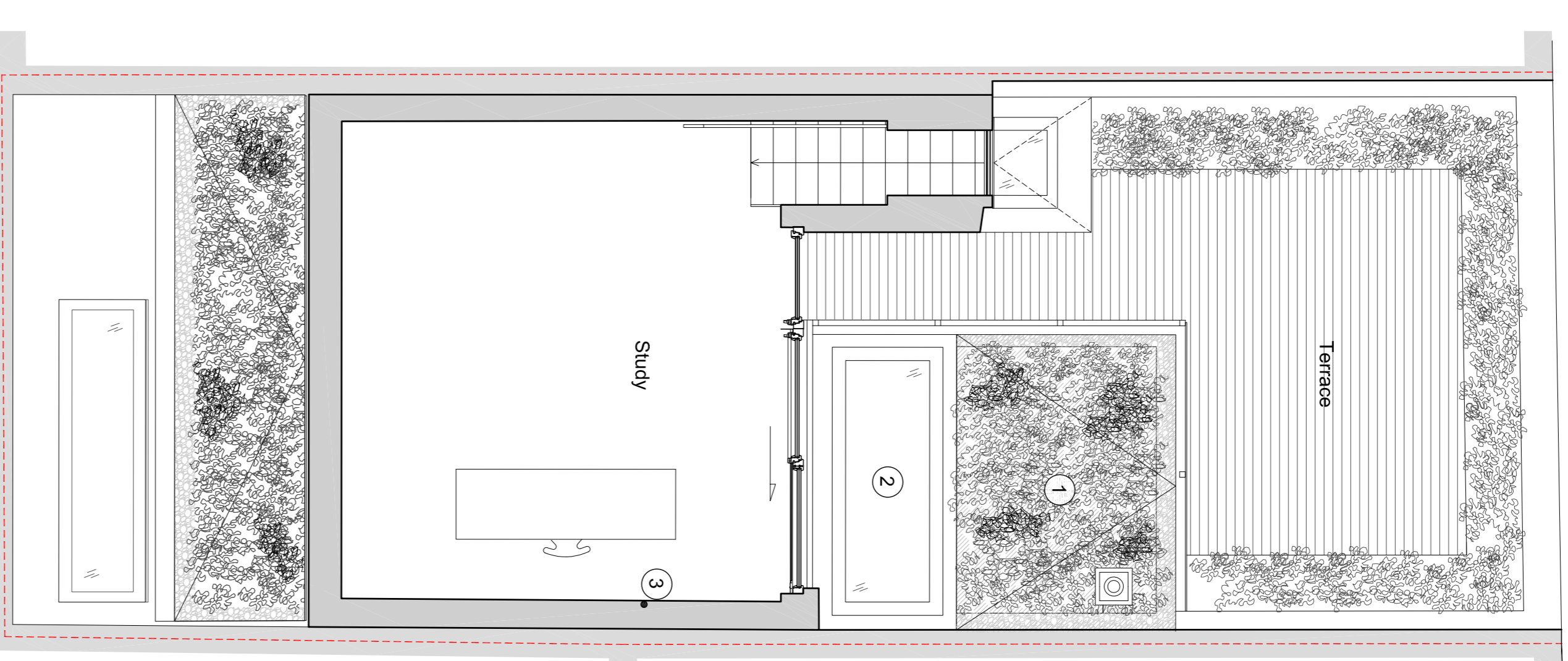
Ground Floor

- 1 Lightwell Above
- 2 Rooflight above
- 3 Knock out panel to provide lift to first floor master bedroom.
- 4 Triple Glazed Passivhaus Windows
- 5 Locked bin store
- 6 Thermally insulated passivhaus timber door
- 7 Stairs to First floor
- 8 Stairs from LG floor



First Floor

- 1 Lightwell to ground floor
- 2 Triple Glazed Passivhaus Windows
- 3 Highly Insulated Walls, Floor and Roof to Meet the Passivhaus Standard.
- 4 Space for knock out panel for lift from ground floor
- 5 Rooflight to ground floor
- 6 Native willflower meadow garden

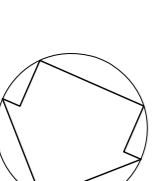


Second Floor

- 1 Wildflower meadow garden
- 2 Triple Glazed Passivhaus Windows
- 3 Highly Insulated Walls, Floor and Roof to Meet the Passivhaus Standard.

Roof Plan

- 1 Native willflower meadow planting
- 2 Solar Thermal and electric Collectors



Rev	Description	Date	By	CHK
1	Use figure dimensions only	20.07.12	CS	ag
2	Dimensions to be checked on site and the architect to be informed of any discrepancies before construction commences	20.07.12	CS	ag
3	All dimensions to be checked on site and the architect to be informed of any discrepancies before construction commences	12.11.12	CS	ag
4	All references to drawings refer to current revision of that drawing	12.11.12	CS	ag
5	Structural and services information shown is indicative only. Refer to relevant drawings for details	12.11.12	CS	ag
6	All work and materials to be in accordance with current applicable statutory legislation and to comply with all relevant codes of practice and British and European standards	20.08.13	CS	ag
7	Revised Second Floor		CS	ag
8	Updated to offered design		CS	ag
			SB	BB

DASHED RED LINE INDICATES CENTRE OF PARTY WALL / SITE BOUNDARY

PROPOSED