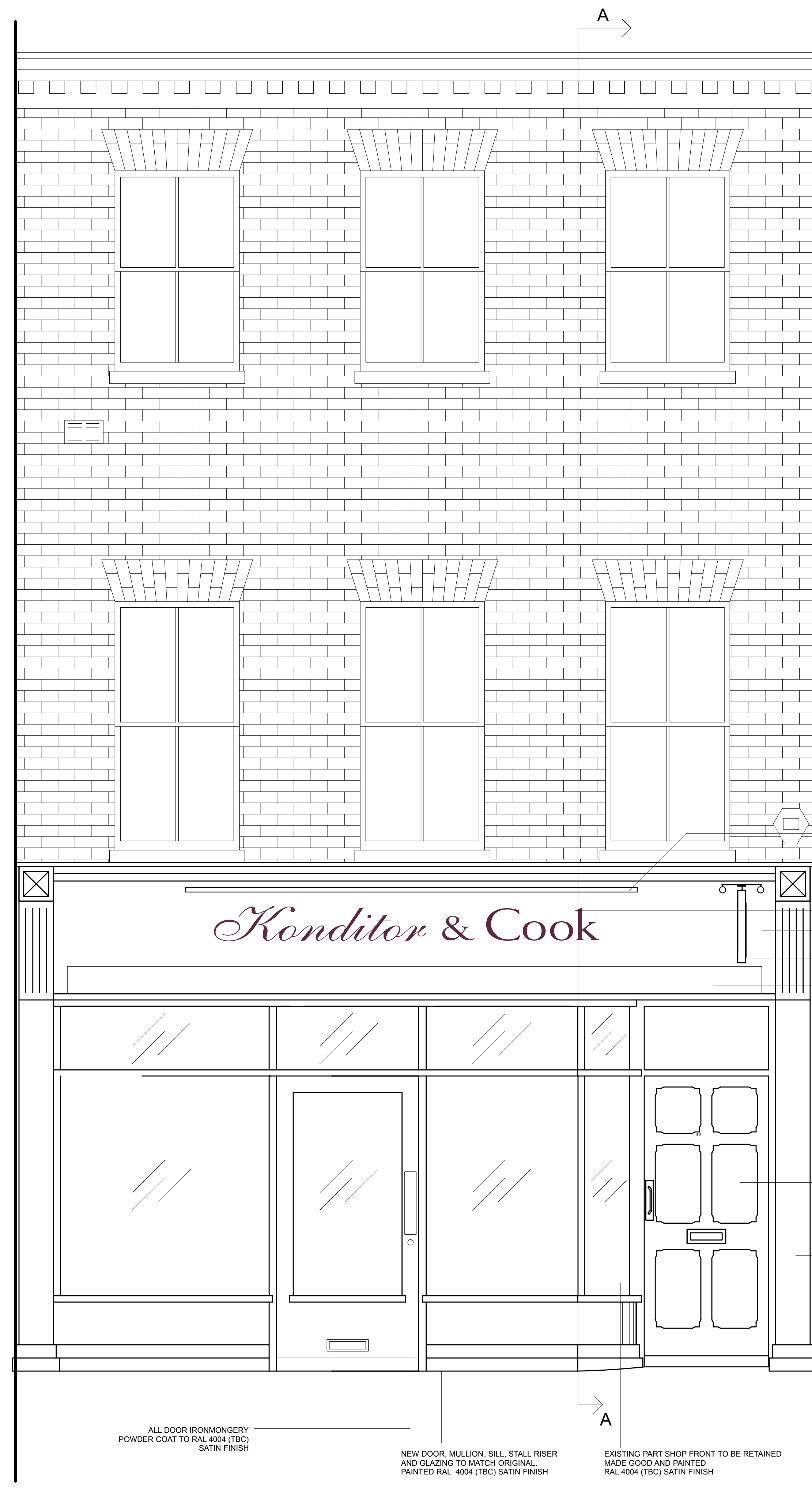


Do not scale from this drawing.  
 All dimensions to be checked on site prior to manufacture.  
 All dimensions to be measured in accordance with the British Standard BS 1191:2013.  
 The drawing is issued on the condition that it is not copied, reproduced, altered or disclosed to any unauthorised person, officer, authority or in part without the consent in writing of Small Back Room.  
 All works to be carried out by a contractor competent to undertake the type of construction works indicated on the drawing. The drawing is to be read in conjunction with the contract and the relevant specifications for the works.  
 The drawing is to be read in conjunction with the contract and the relevant specifications for the works.



PART ELEVATION OF FASCIA  
 1:10 @ A0

PROJECTING TROUGH LIGHTING FOCUSED ON TO SIGN.  
 FITTING SPRAYED TO MATCH RAL 4004 (TBC).  
 LIGHT LEVELS ACROSS SIGN TO BE 207CDM2

PIN MOUNTED 3 DIMENSIONAL STAINLESS STEEL LETTERING  
 DETAIL TBA BY SIGNAGE MANUFACTURER  
 REFER TO BRANDING GUIDELINES

EXISTING TIMBER FASCIA RETAINED  
 MADE GOOD AND PAINTED TO RAL 4004 (TBC) SATIN FINISH

NEW PROJECTING SIGN  
 READ IN CONJUNCTION WITH DETAIL

NEW RETRACTABLE AWNING HOUSED IN  
 FASCIA MOUNTED CASSETTE

EXISTING TO UPPER LEVEL FLATS  
 REPAINTED RAL 4004 (TBC) SATIN FINISH

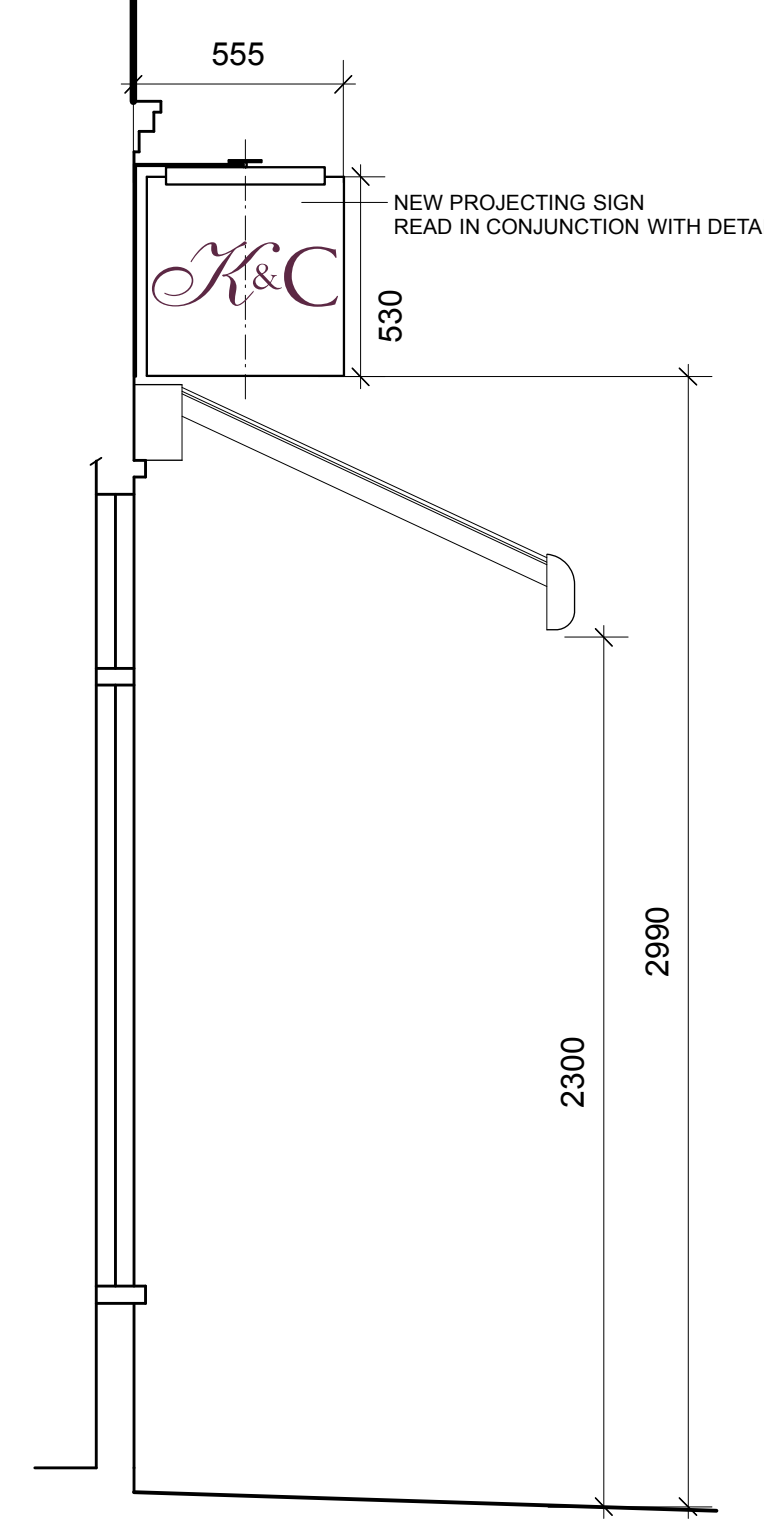
EXISTING PLASTER TO BE RETAINED  
 MADE GOOD AND PAINTED  
 RAL 4004 (TBC) SATIN FINISH

ALL DOOR IRONMONGERY  
 POWDER COAT TO RAL 4004 (TBC)  
 SATIN FINISH

NEW DOOR, MULLION, SILL, STALL RISER  
 AND GLAZING TO MATCH ORIGINAL.  
 PAINTED RAL 4004 (TBC) SATIN FINISH

EXISTING PART SHOP FRONT TO BE RETAINED  
 MADE GOOD AND PAINTED  
 RAL 4004 (TBC) SATIN FINISH

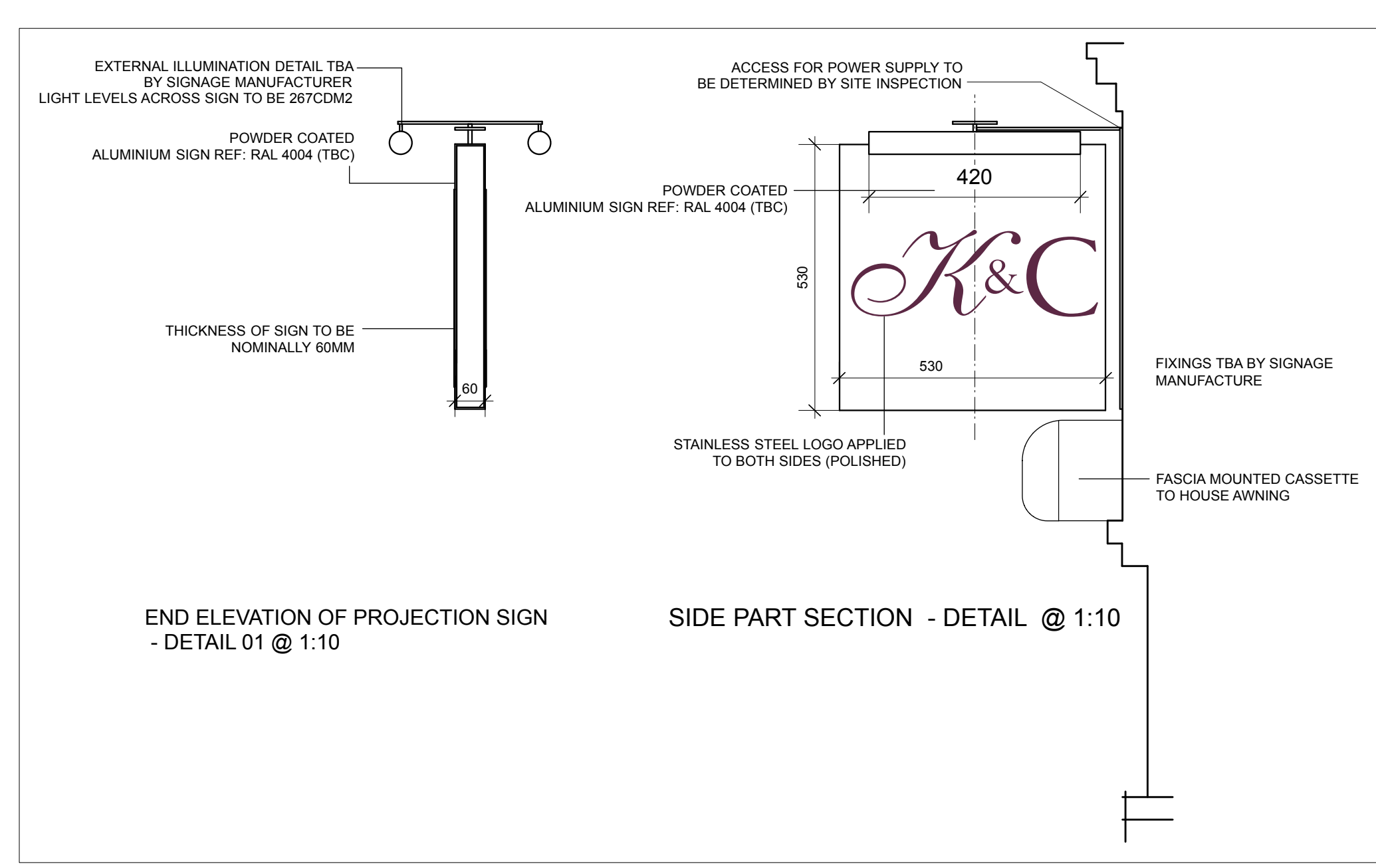
BUILDING FRONT: PART ELEVATION 1:20@A0



INDICATIVE PART SECTION AA 1:20@A0

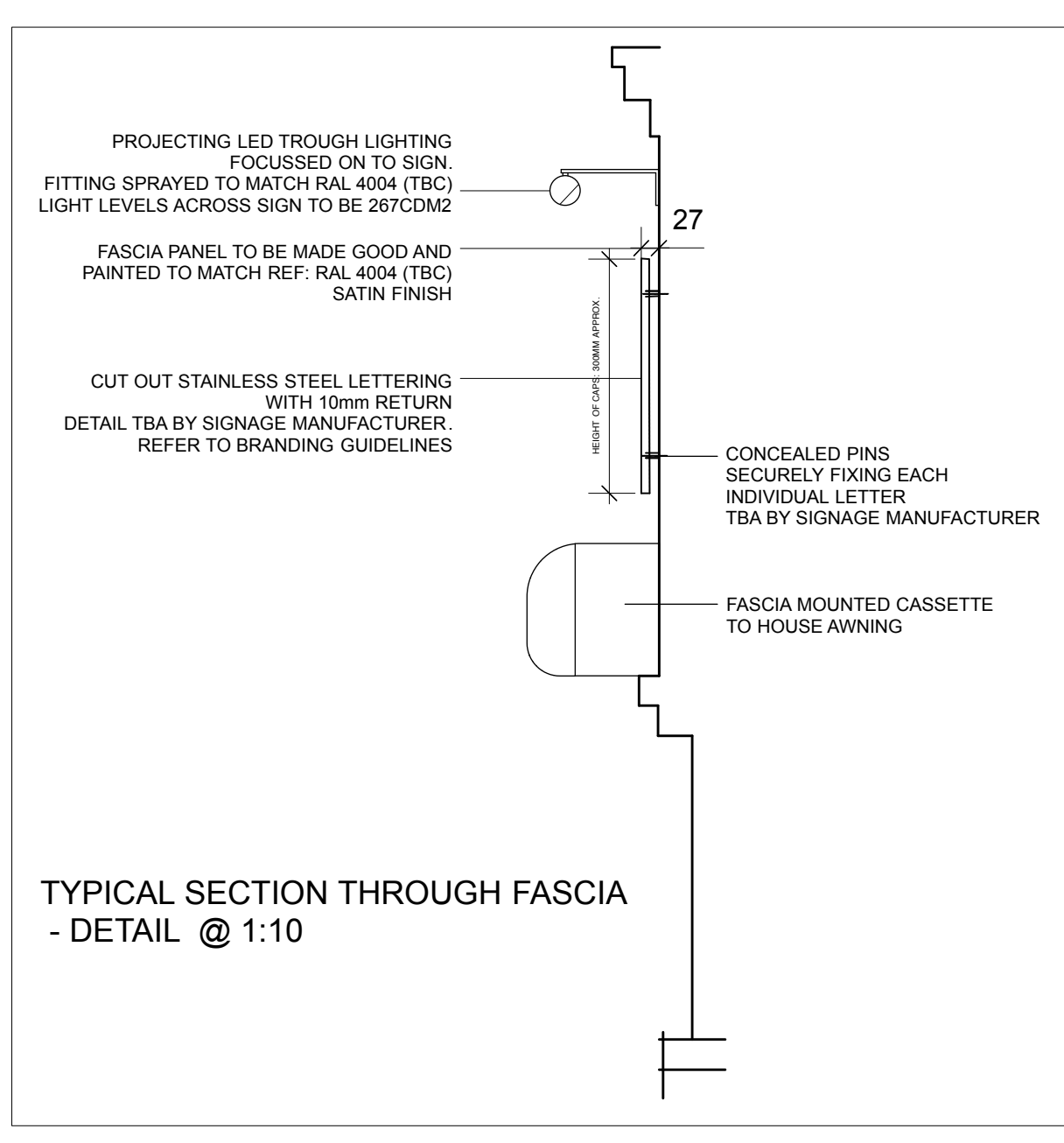


IMPRESSION OF NEW SHOPFRONT  
 (NOT TO SCALE)

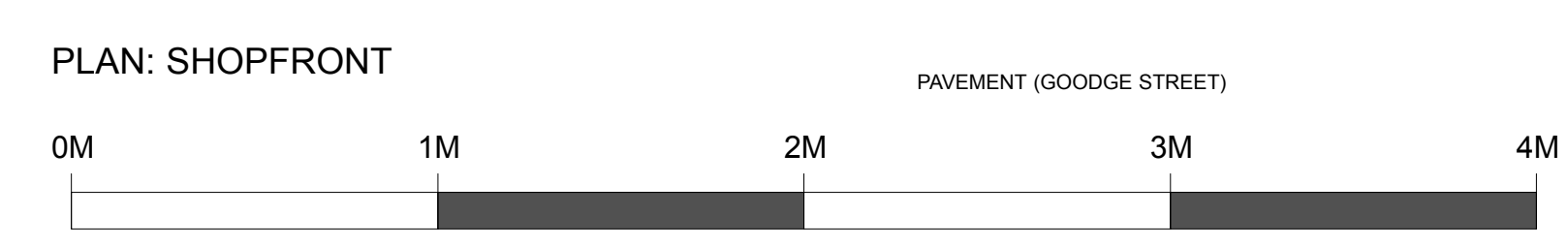
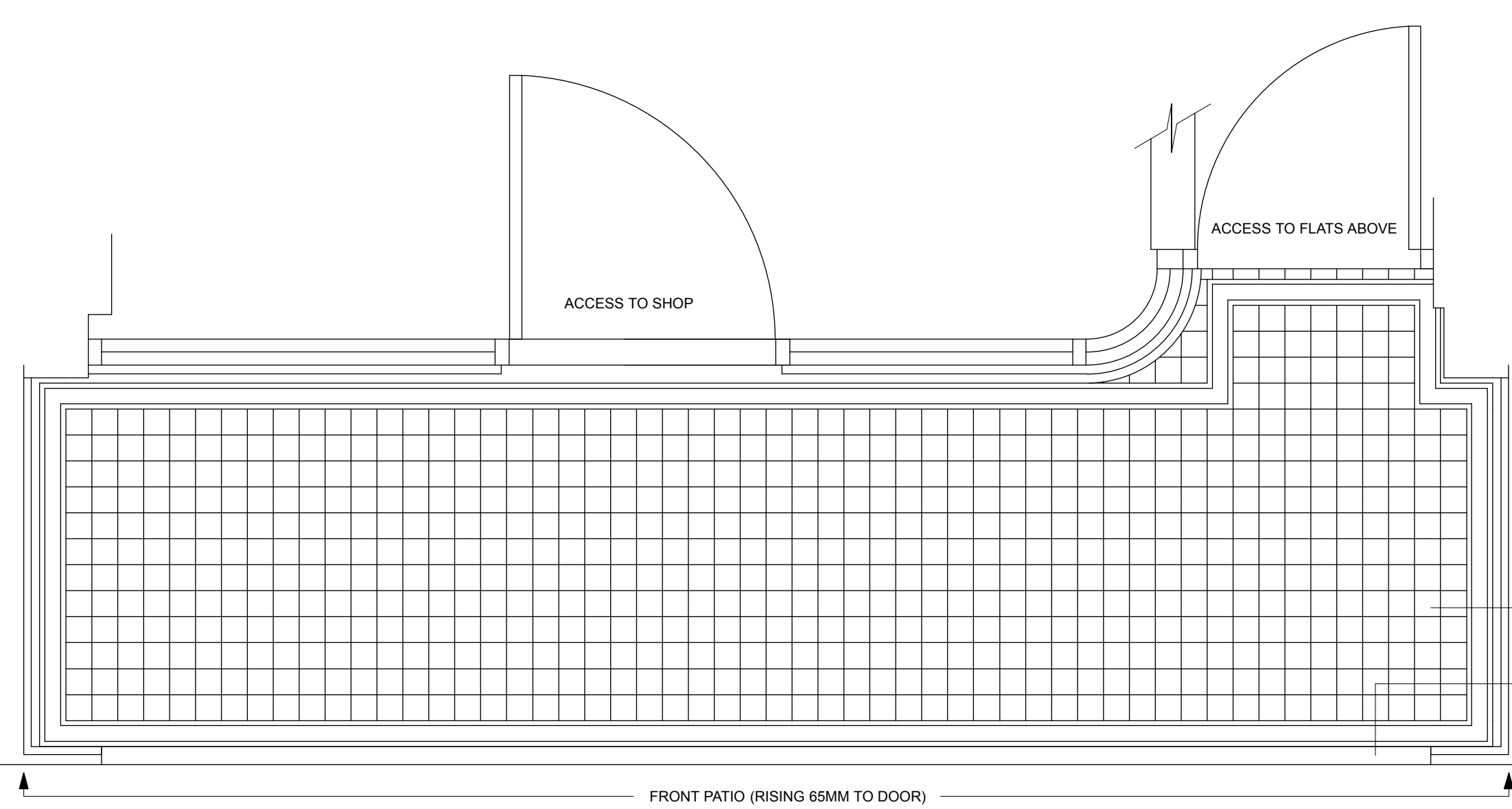


END ELEVATION OF PROJECTION SIGN  
 - DETAIL 01 @ 1:10

SIDE PART SECTION - DETAIL @ 1:10



TYPICAL SECTION THROUGH FASCIA  
 - DETAIL @ 1:10



PLAN: SHOPFRONT

REV	DATE	DESCRIPTION
		<b>small back room</b>
		5 WOODCOCK STREET Telephone 020 7622 7800 LONDON F4 6B 6E SE1 8TD Fax 020 7622 7801 E-mail info@sbroom.co.uk
		CLIENT KONDITOR & COOK
		PROJECT GOODGE STREET SHOP
		TITLE SHOPFRONT AND SIGNAGE
		SCALE 1:20@A0
		DWG No. 15929_04D3 REV
		DRAWN BY SR
		DATE 25.11.2014
		DRAWING STATUS
		<b>PLANNING</b>