

Appendix C – Proposed Structural Drawings

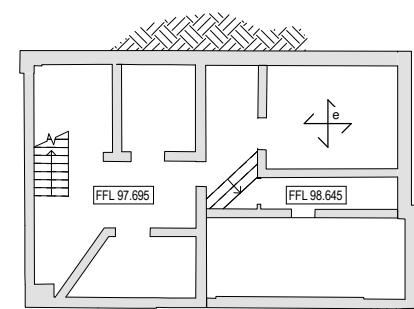
NOTES

- 1 This drawing is to be read in conjunction with all relevant Architects, Engineers and specialists drawings and specifications.
- 2 Do not scale from this drawing in either paper or digital form. Use written dimensions only. To check drawing has been printed to the intended scale the above bar should be 100mm long @ A1 or 50mm long @ A3

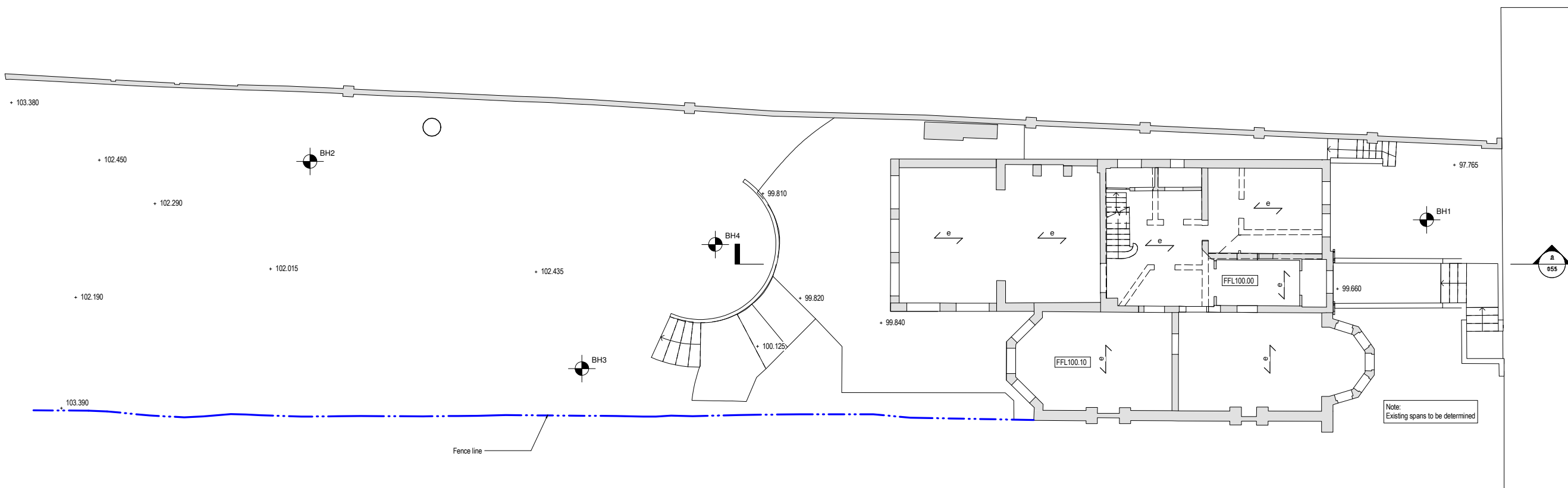
NOTE:
All existing details shown are based on Archive drawings and limited opening up works. Assumptions have been made regarding existing construction. Materials, construction, framing and spans of existing slabs and walls to be confirmed during enabling works.

LEGEND

	Existing RC floor as indicated on drawing
	Existing timber joists floor
	Existing masonry structural walls
	Existing structure below
	Existing padstone, TBC on site
	Boundary line



DWG EXISTING BASEMENT PLAN
1:100



DWG EXISTING GROUND FLOOR PLAN
1:100

P1	20.11.14	DP	BW	PRELIMINARY ISSUE
Rev	Date	Drawn	Eng	Amendments

HEYNE TILLETTS STEEL
STRUCTURAL ENGINEERS

Job Name:
**4 WEDDERBURN ROAD
NW3**

Drawing Title:
**EXISTING BASEMENT AND
GROUND FLOOR PLAN**

Scale: 1:100 at A1

Purpose of Issue: PRELIMINARY

Drawing No. 1220 / 010 Rev. P1

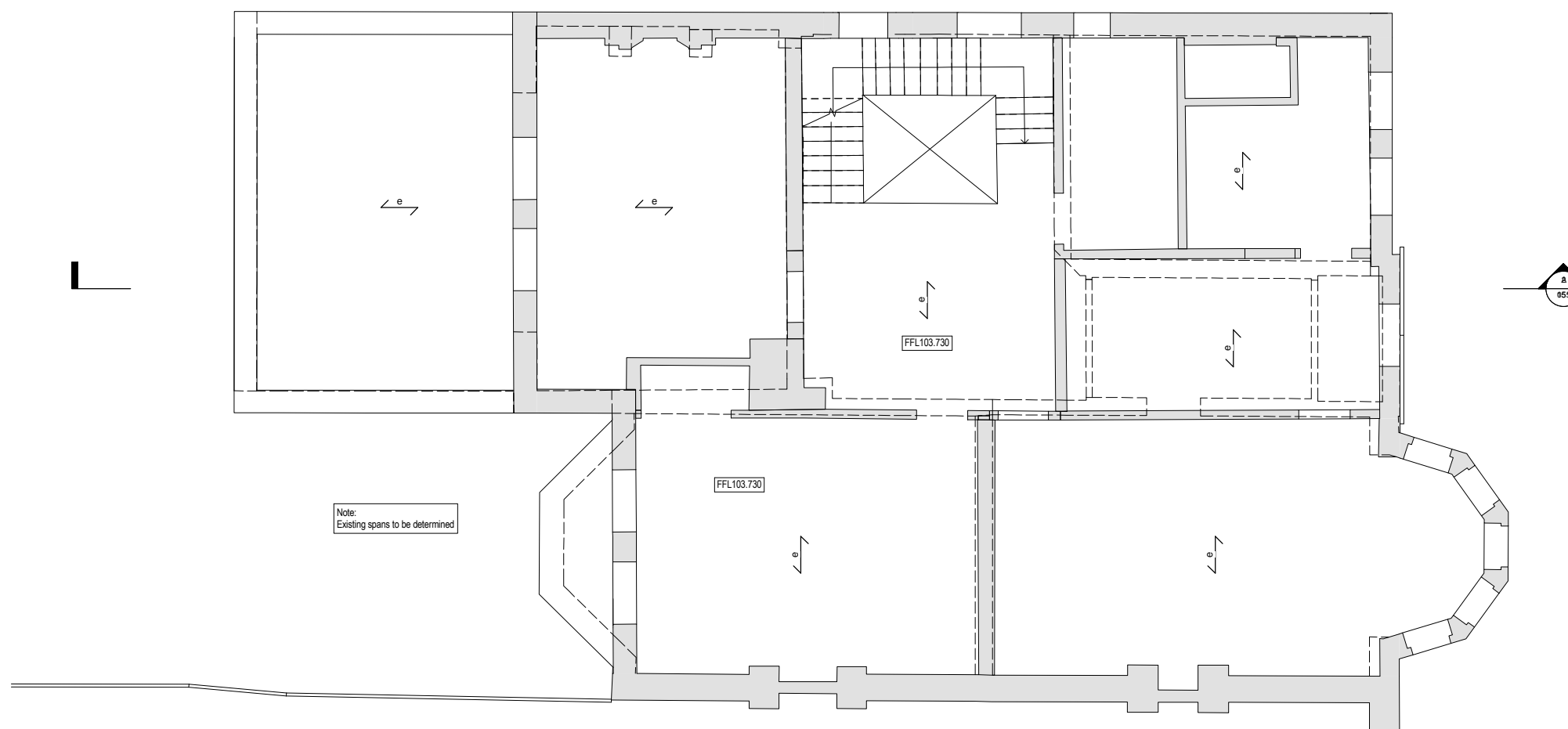
NOTES

- 1 This drawing is to be read in conjunction with all relevant Architects, Engineers and specialists drawings and specifications.
- 2 Do not scale from this drawing in either paper or digital form. Use written dimensions only. To check drawing has been printed to the intended scale the above bar should be 100mm long @ A1 or 50mm long @ A3

NOTE:
All existing details shown are based on Archive drawings and limited opening up works. Assumptions have been made regarding existing construction. Materials, construction, framing and spans of existing slabs and walls to be confirmed during enabling works.

LEGEND

	Existing RC floor as indicated on drawing
	Existing timber joists floor
	Existing masonry structural walls
	Existing structure below
	Existing padstone, TBC on site
	Boundary line



Note:
Existing spans to be determined

P1	20.11.14	DP	BW	PRELIMINARY ISSUE
Rev	Date	Drawn	Eng	Amendments

HEYNE TILLETTS STEEL
STRUCTURAL ENGINEERS

Job Name:
**4 WEDDERBURN ROAD
NW3**

Drawing Title:
EXISTING FIRST FLOOR PLAN

Scale: 1:50 at A1

Purpose of Issue: PRELIMINARY

Drawing No. 1220 / 020 Rev. P1

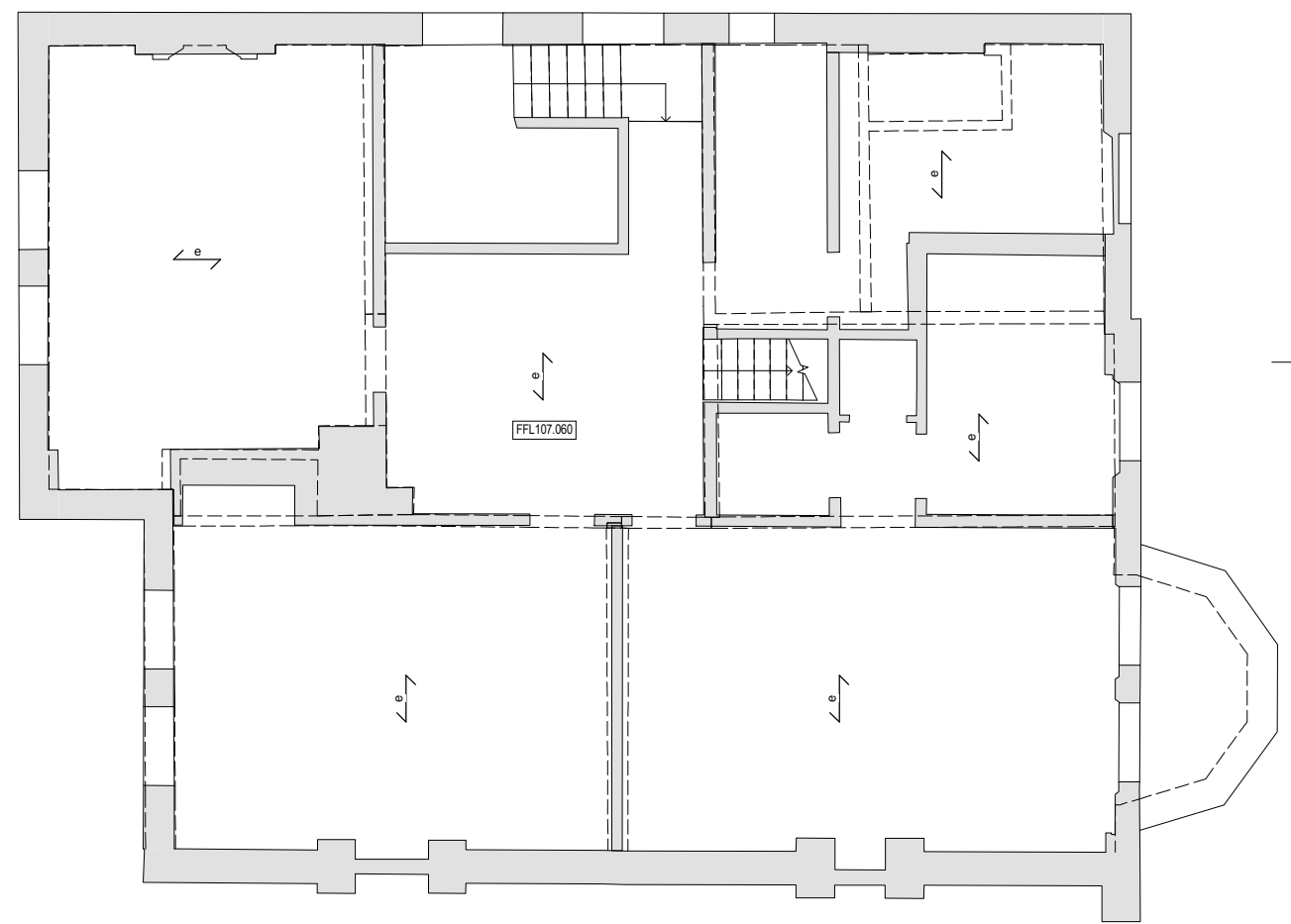
NOTES

- 1 This drawing is to be read in conjunction with all relevant Architects, Engineers and specialists drawings and specifications.
- 2 Do not scale from this drawing in either paper or digital form. Use written dimensions only. To check drawing has been printed to the intended scale the above bar should be 100mm long @ A1 or 50mm long @ A3

NOTE:
All existing details shown are based on Archive drawings and limited opening up works. Assumptions have been made regarding existing construction. Materials, construction, framing and spans of existing slabs and walls to be confirmed during enabling works.

LEGEND

	Existing RC floor as indicated on drawing
	Existing timber joists floor
	Existing masonry structural walls
	Existing structure below
	Existing padstone, TBC on site
	Boundary line



Note:
Existing spans to be determined

Rev	Date	Drawn	Eng	Amendments
P1	20.11.14	DP	BW	PRELIMINARY ISSUE

HEYNE TILLETTS STEEL
STRUCTURAL ENGINEERS

Job Name:
**4 WEDDERBURN ROAD
NW3**

Drawing Title:
EXISTING SECOND FLOOR PLAN

Scale: 1:50 at A1

Purpose of Issue: **PRELIMINARY**

Drawing No. **1220 / 030** Rev. **P1**

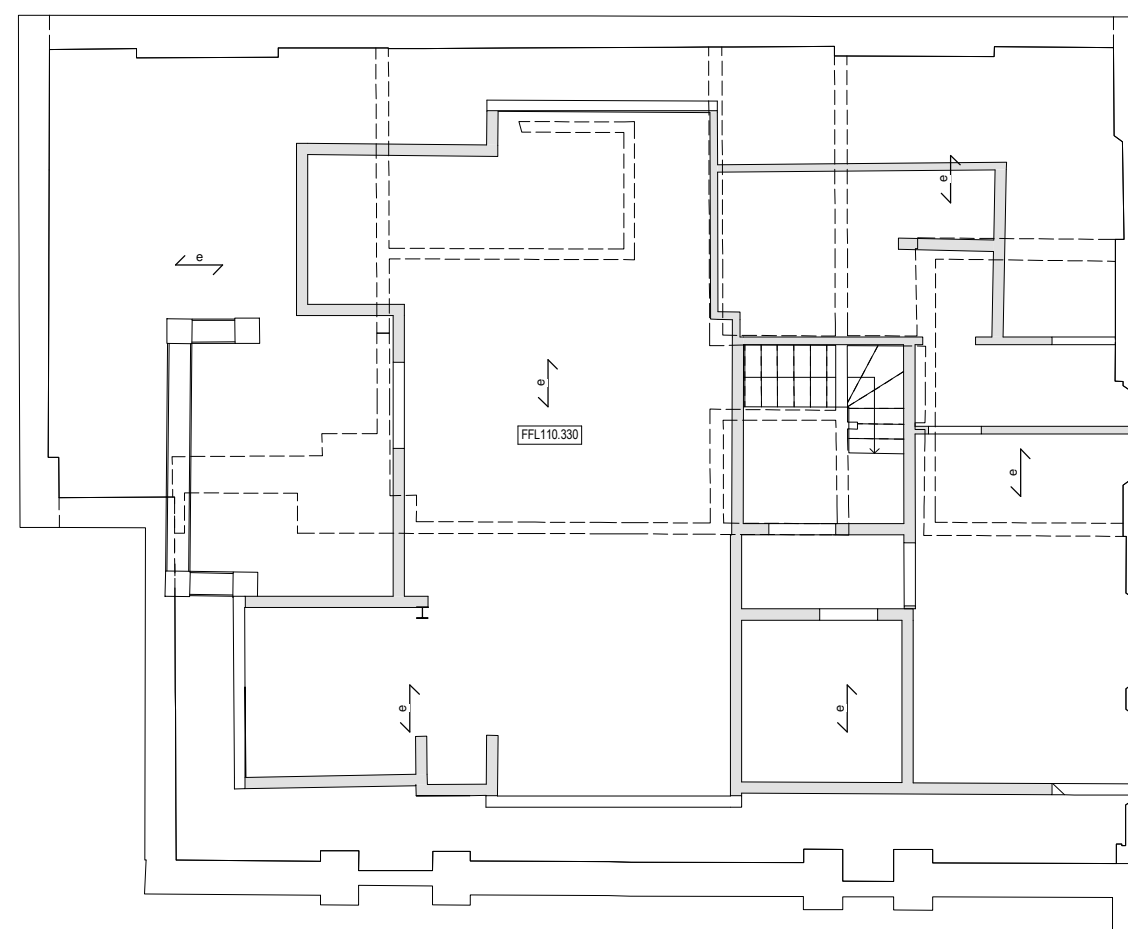
NOTES

- 1 This drawing is to be read in conjunction with all relevant Architects, Engineers and specialists drawings and specifications.
- 2 Do not scale from this drawing in either paper or digital form. Use written dimensions only. To check drawing has been printed to the intended scale the above bar should be 100mm long @ A1 or 50mm long @ A3

NOTE:
All existing details shown are based on Archive drawings and limited opening up works. Assumptions have been made regarding existing construction. Materials, construction, framing and spans of existing slabs and walls to be confirmed during enabling works.

LEGEND

	Existing RC floor as indicated on drawing
	Existing timber joists floor
	Existing masonry structural walls
	Existing structure below
	Existing padstone, TBC on site
	Boundary line



Note:
Existing spans to be determined

Rev	Date	Drawn	Eng	Amendments
P1	20.11.14	DP	BW	PRELIMINARY ISSUE

HEYNE TILLETTS STEEL
STRUCTURAL ENGINEERS

Job Name:
**4 WEDDERBURN ROAD
NW3**

Drawing Title:
EXISTING THIRD FLOOR PLAN

Scale: 1:50 at A1

Purpose of Issue: PRELIMINARY

Drawing No. 1220 / 040 Rev. P1

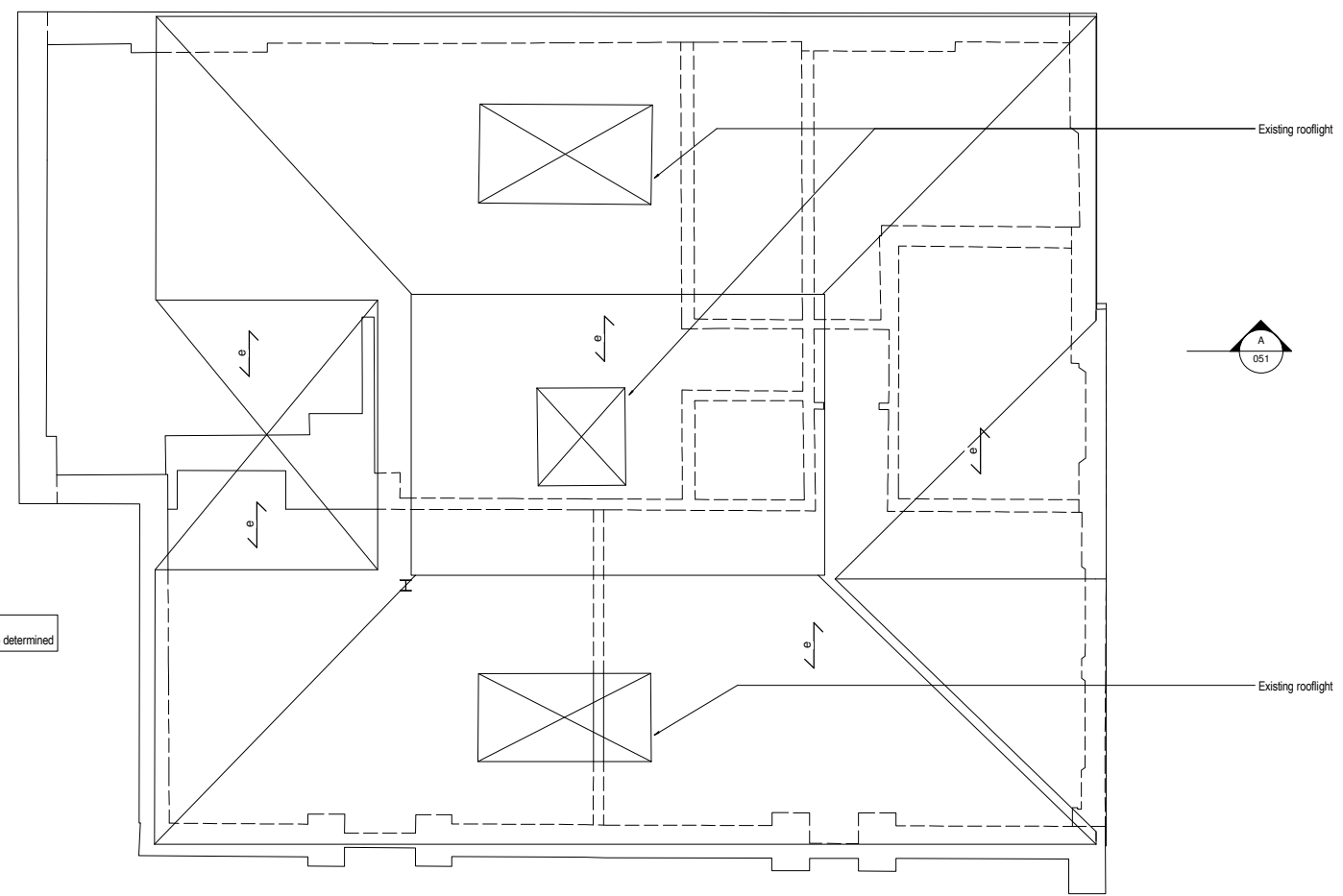
NOTES

- 1 This drawing is to be read in conjunction with all relevant Architects, Engineers and specialists drawings and specifications.
- 2 Do not scale from this drawing in either paper or digital form. Use written dimensions only. To check drawing has been printed to the intended scale the above bar should be 100mm long @ A1 or 50mm long @ A3

NOTE:
All existing details shown are based on Archive drawings and limited opening up works. Assumptions have been made regarding existing construction. Materials, construction, framing and spans of existing slabs and walls to be confirmed during enabling works.

LEGEND

	Existing RC floor as indicated on drawing
	Existing timber joists floor
	Existing masonry structural walls
	Existing structure below
	Existing padstone, TBC on site
	Boundary line



Note:
Existing spans to be determined

Rev	Date	Drawn	Eng	Amendments
P1	20.11.14	DP	BW	PRELIMINARY ISSUE

HEYNE TILLETTS STEEL
STRUCTURAL ENGINEERS

Job Name:
**4 WEDDERBURN ROAD
NW3**

Drawing Title:
EXISTING ROOF PLAN

Scale: 1:50 at A1

Purpose of Issue: PRELIMINARY

Drawing No. 1220 / 050 Rev. P1

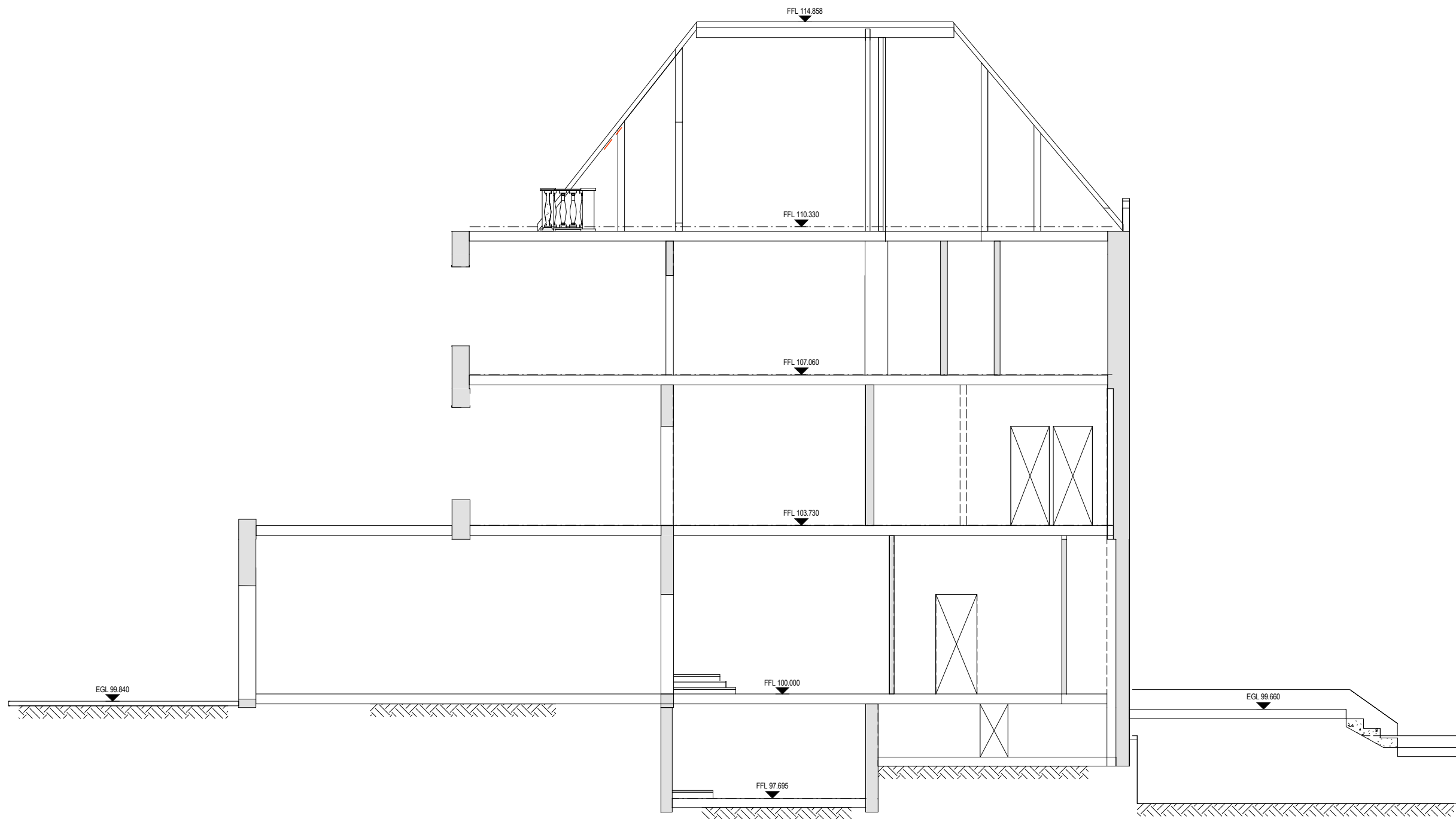
NOTES

- 1 This drawing is to be read in conjunction with all relevant Architects, Engineers and specialists drawings and specifications.
- 2 Do not scale from this drawing in either paper or digital form. Use written dimensions only. To check drawing has been printed to the intended scale the above bar should be 100mm long @ A1 or 50mm long @ A3

NOTE:
All existing details shown are based on Archive drawings and limited opening up works. Assumptions have been made regarding existing construction. Materials, construction, framing and spans of existing slabs and walls to be confirmed during enabling works.

LEGEND

	Existing RC floor as indicated on drawing
	Existing timber joists floor
	Existing masonry structural walls
	Existing structure below
	Existing padstone, TBC on site
	Boundary line



P1	20.11.14	DP	BW	PRELIMINARY ISSUE
Rev	Date	Drawn	Eng	Amendments

HEYNE|TILLET|STEEL
STRUCTURAL ENGINEERS

Job Name:
**4 WEDDERBURN ROAD
NW3**

Drawing Title:
EXISTING SECTION AA

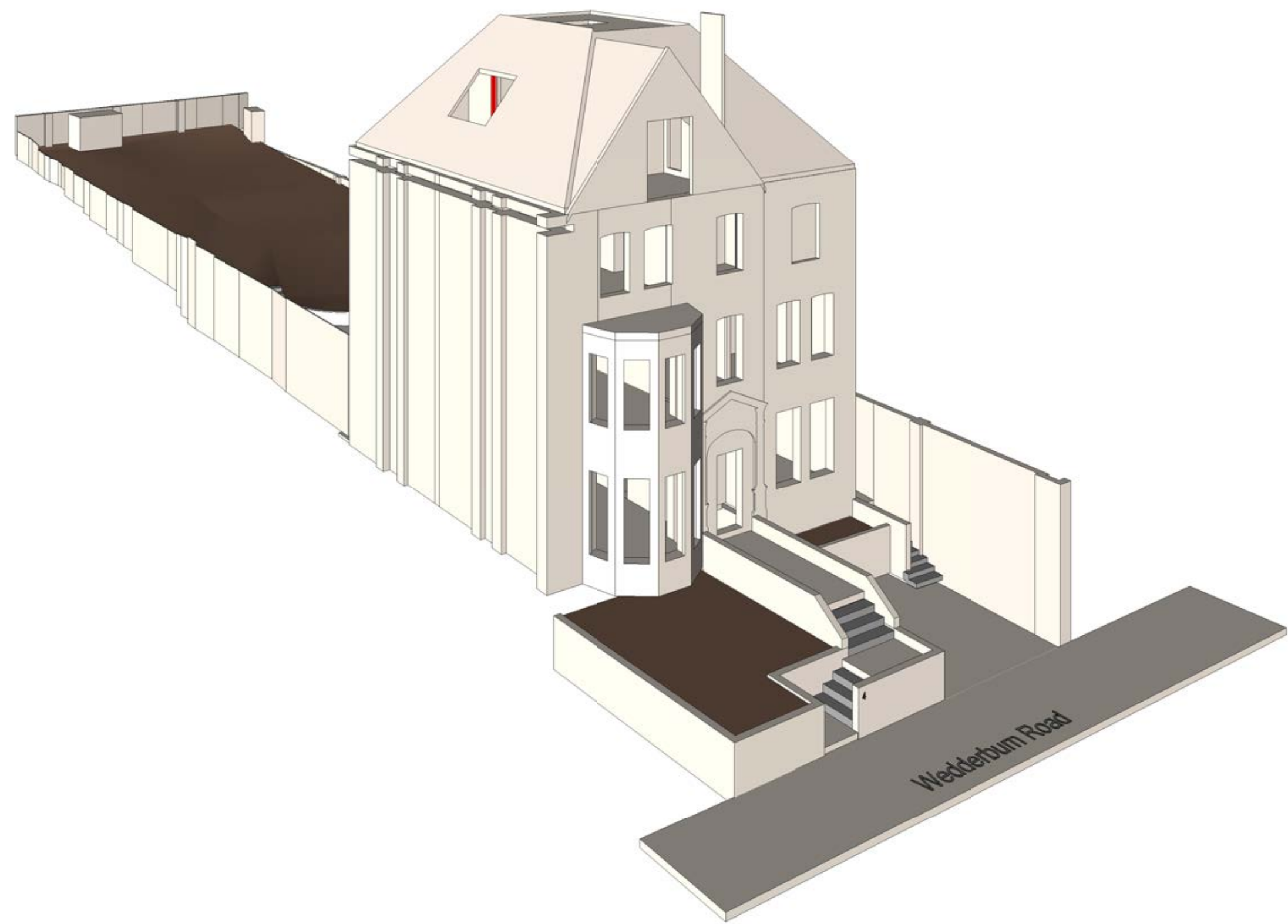
Scale: 1:50 at A1

Purpose of Issue: PRELIMINARY

Drawing No. 1220 / 051 Rev. P1

NOTES

- 1 This drawing is to be read in conjunction with all relevant Architects, Engineers and specialists drawings and specifications.
- 2 Do not scale from this drawing in either paper or digital form. Use written dimensions only. To check drawing has been printed to the intended scale the above bar should be 100mm long @ A1 or 50mm long @ A3



Rev	Date	Drawn	Eng	Amendments
P1	20.11.14	DP	BW	PRELIMINARY ISSUE

HEYNE TILLETTS STEEL
STRUCTURAL ENGINEERS

Job Name:
4 WEDDERBURN ROAD
NW3

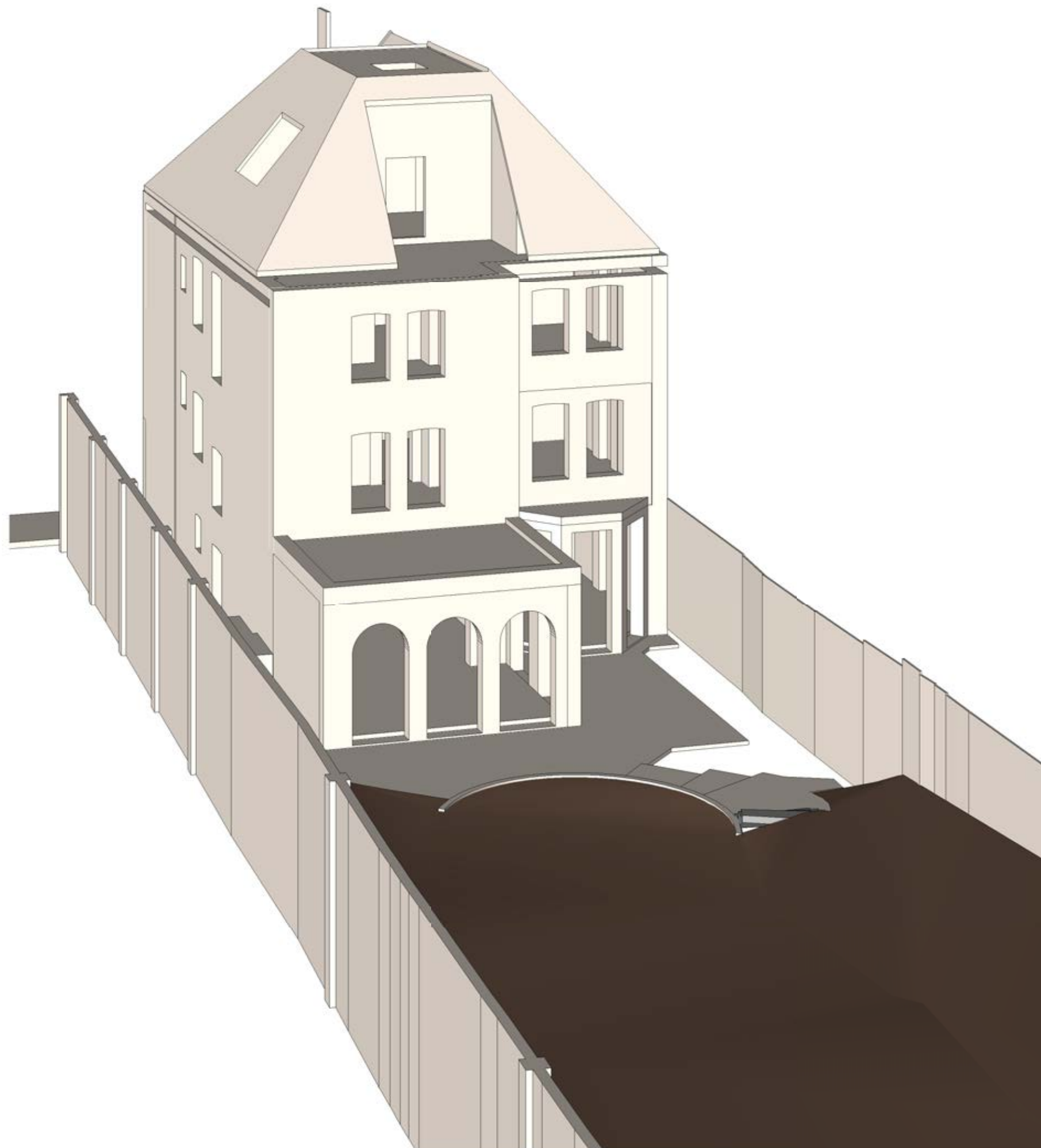
Drawing Title:
EXISTING PERSPECTIVE FRONT VIEW

Scale: _____ at A1
Purpose of Issue: _____ PRELIMINARY

Drawing No. **1220 / 060** Rev. **P1**

NOTES

- 1 This drawing is to be read in conjunction with all relevant Architects, Engineers and specialists drawings and specifications.
- 2 Do not scale from this drawing in either paper or digital form. Use written dimensions only. To check drawing has been printed to the intended scale the above bar should be 100mm long @ A1 or 50mm long @ A3



P1	20.11.14	DP	BW	PRELIMINARY ISSUE
Rev	Date	Drawn	Eng	Amendments

HEYNE|TILLET|STEEL
STRUCTURAL ENGINEERS

Job Name:
4 WEDDERBURN ROAD
NW3

Drawing Title:
EXISTING PERSPECTIVE REAR
VIEW

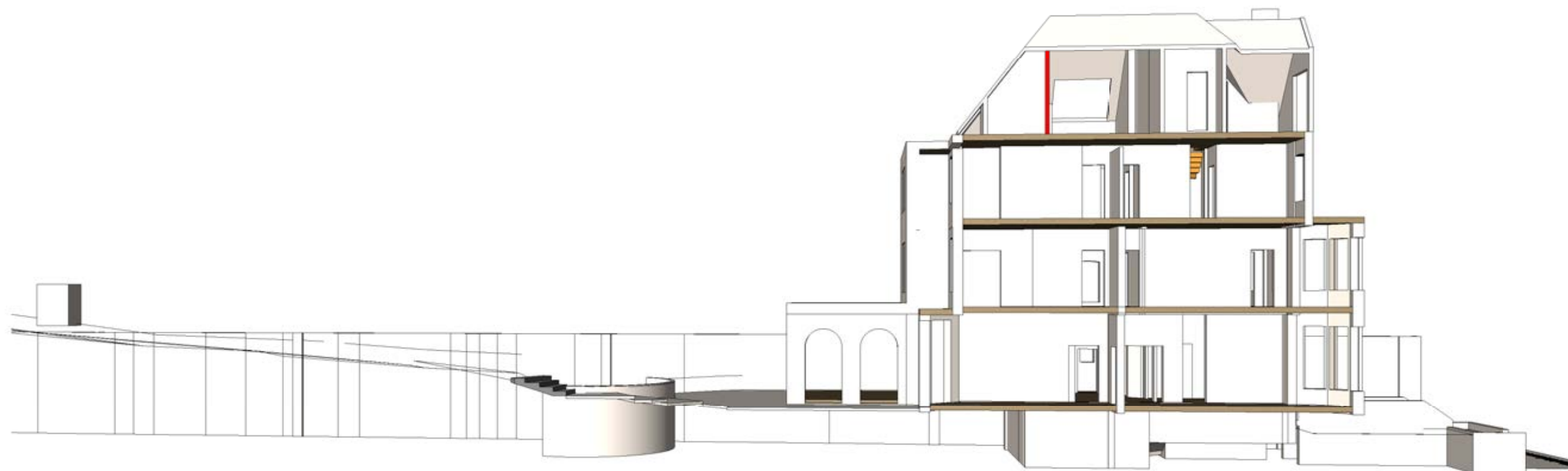
Scale: _____ at A1

Purpose of Issue: _____ PRELIMINARY

Drawing No. 1220 / 061 Rev. P1

NOTES

- 1 This drawing is to be read in conjunction with all relevant Architects, Engineers and specialists drawings and specifications.
- 2 Do not scale from this drawing in either paper or digital form. Use written dimensions only. To check drawing has been printed to the intended scale the above bar should be 100mm long @ A1 or 50mm long @ A3



P1	20.11.14	DP	BW	PRELIMINARY ISSUE
Rev	Date	Drawn	Eng	Amendments

HEYNE|TILLET|STEEL
STRUCTURAL ENGINEERS

Job Name:

4 WEDDERBURN ROAD
NW3

Drawing Title:

EXISTING PERSPECTIVE
SECTION VIEW

Scale: _____ at A1

Purpose of Issue: _____ PRELIMINARY

Drawing No. _____ Rev. _____
1220 / 062 P1

www.hts.uk.com

NOTES

- 1 This drawing is to be read in conjunction with all relevant Architects, Engineers and specialists drawings and specifications.
- 2 Do not scale from this drawing in either paper or digital form. Use written dimensions only. To check drawing has been printed to the intended scale the above bar should be 100mm long @ A1 or 50mm long @ A3

COLUMN SCHEDULE

C1	203 UCS2
C2	139.7x10 CHS
C3	300sq RC column

BEAM SCHEDULE

B1	203 UCS2
B2	165x171/305x82.0 USFB, S355 Precambered
B3	200x150x8.0 RHS
B4	152 UC30
CB1	500wd x 1000dp RC beam
CB2	300wd x 600dp RC beam
DJ	Double joists
WP1	200x50 timber resin bolted at 600mm c/c

PROPOSED LEGEND

1	300mm thick RC ground bearing slab
2	225mm thick RC suspended slab
3	300mm thick RC suspended slab
4	150mm thick composite deck metal deck with A393 mesh
5	200x50 C16 timber joists at 400mm c/c with 18mm PLY over glued and screwed to top face

PADSTONES LEGEND

PS1	440g x 215dp x 100wd MC padstone
PS2	330g x 215dp x 100wd MC padstone

PILECAP SCHEDULE

PC1	1000x1000x600dp MC pad
PC2	925wdx600dp RC capping beam

P1	20.11.14	DP	BW	PRELIMINARY ISSUE
Rev	Date	Drawn	Eng	Amendments

HEYNE|TILLET|STEEL
STRUCTURAL ENGINEERS

Job Name:
**4 WEDDERBURN ROAD
NW3**

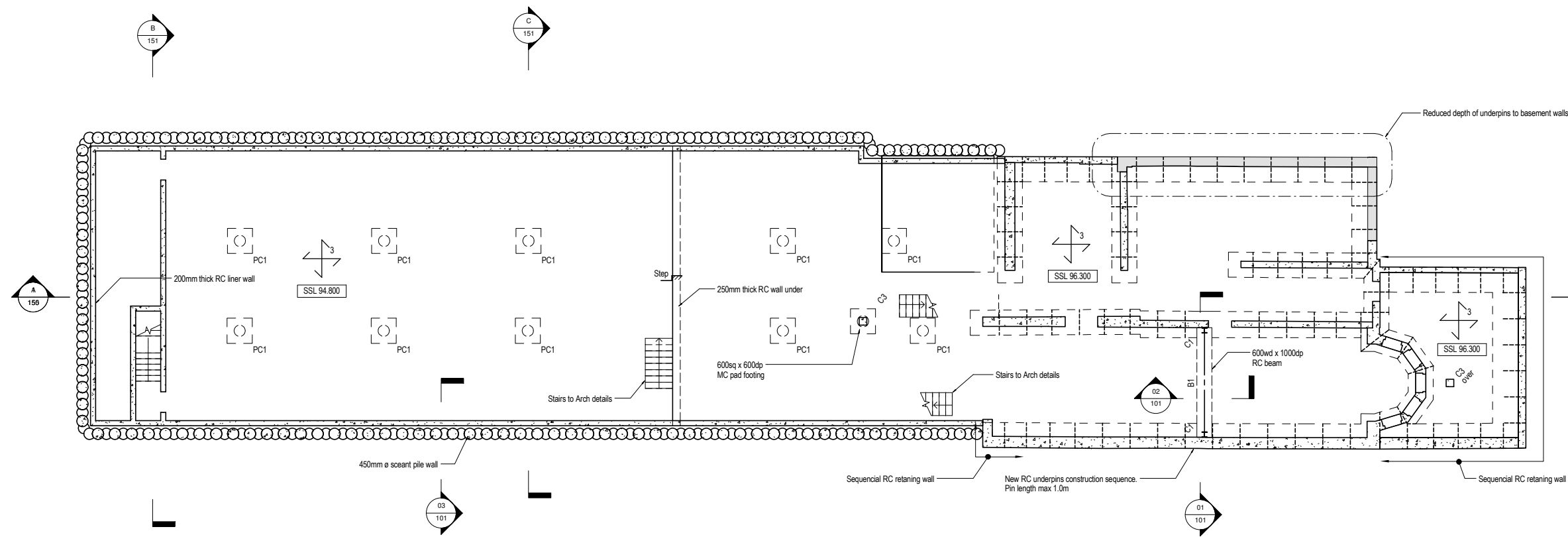
Drawing Title:
**PROPOSED BASEMENT AND
GROUND FLOOR PLAN**

Scale: 1:100 at A1

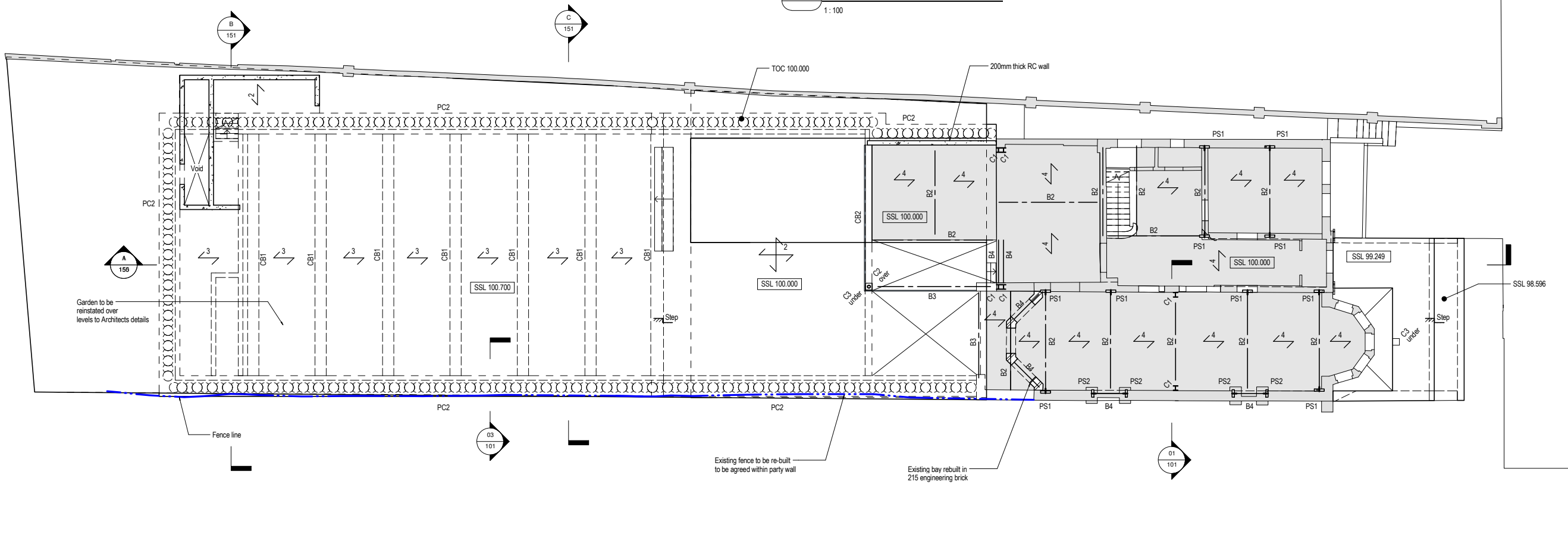
Purpose of Issue: **PRELIMINARY**

Drawing No. **1220 / 100** Rev. **P1**

www.hts.uk.com



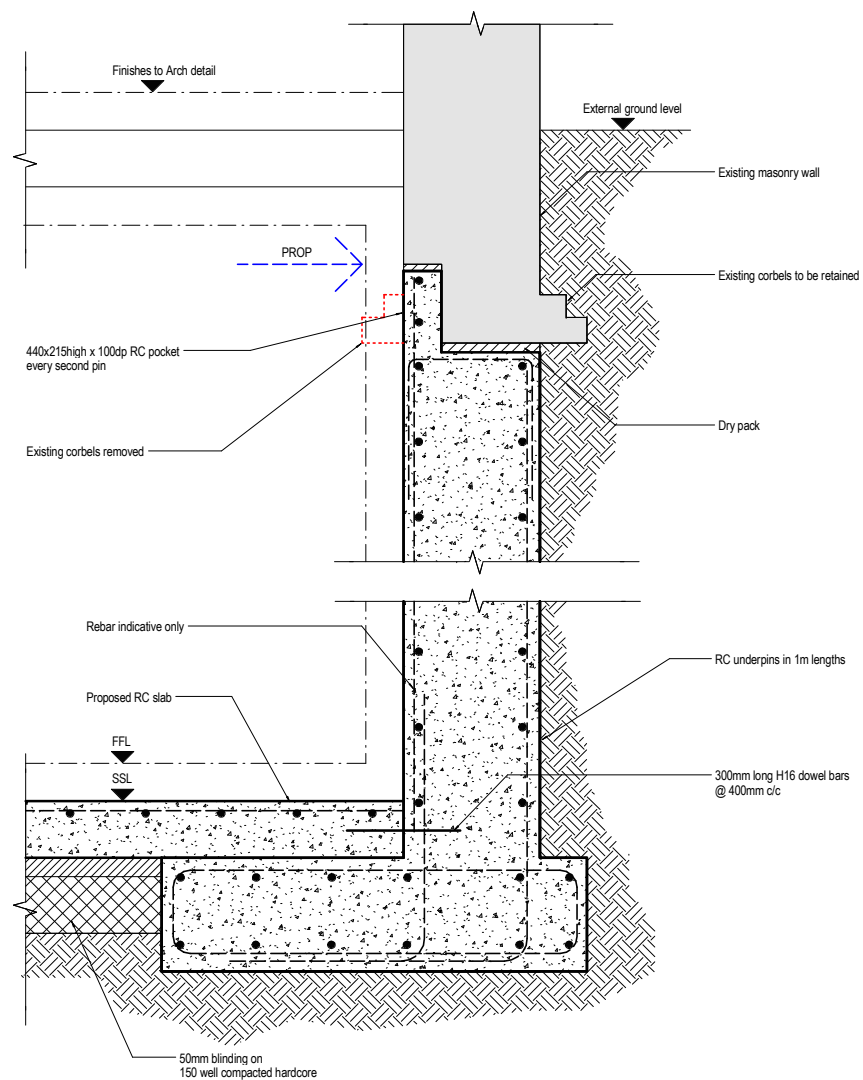
DWG **PROPOSED BASEMENT PLAN**
1:100



DWG **PROPOSED GROUND FLOOR PLAN**
1:100

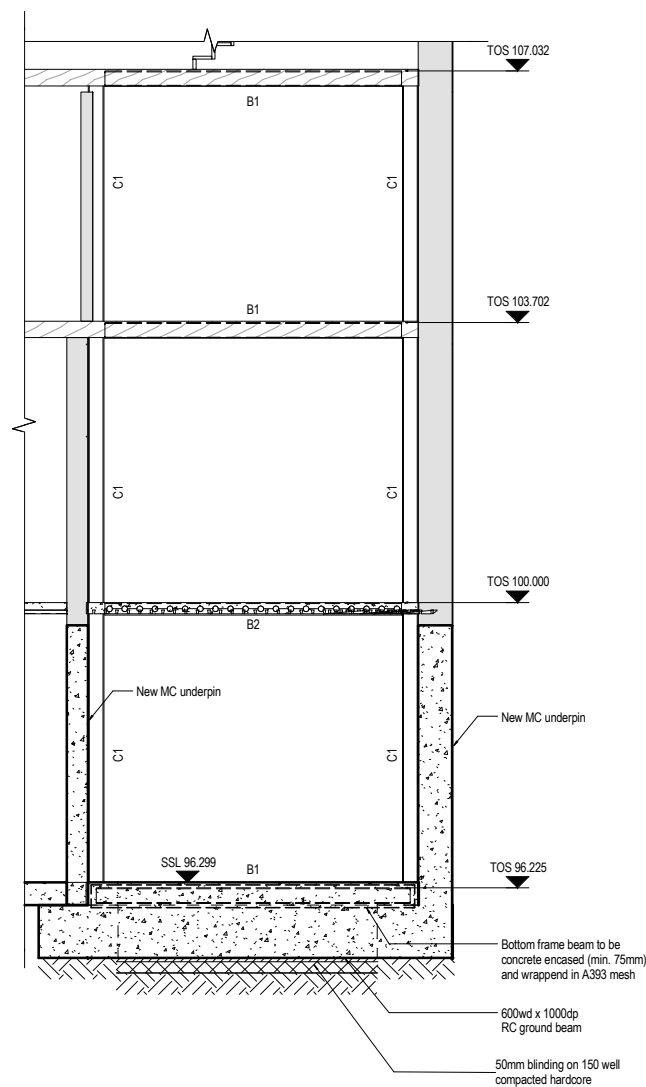
NOTES

- 1 This drawing is to be read in conjunction with all relevant Architects, Engineers and specialists drawings and specifications.
- 2 Do not scale from this drawing in either paper or digital form. Use written dimensions only. To check drawing has been printed to the intended scale the above bar should be 100mm long @ A1 or 50mm long @ A3



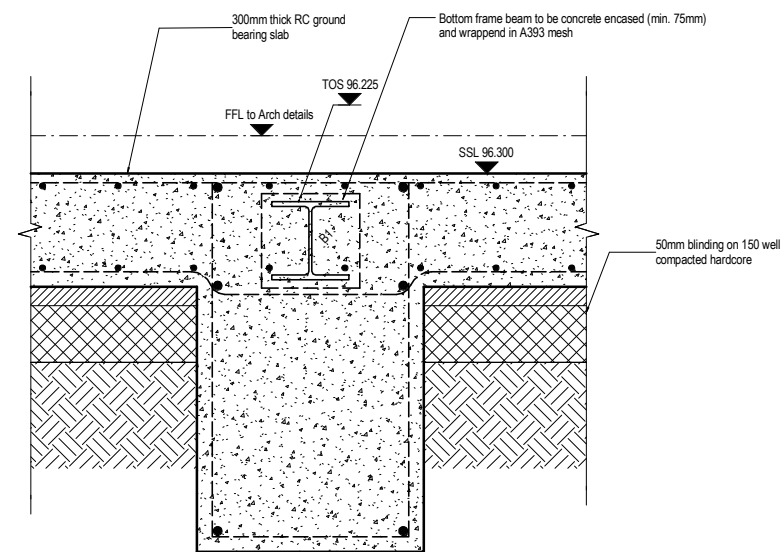
TYPICAL SECTION THROUGH EXTERNAL WALL UNDERPINS SHOWING KEY DETAIL BETWEEN RC & EXISTING MASONRY

1:10



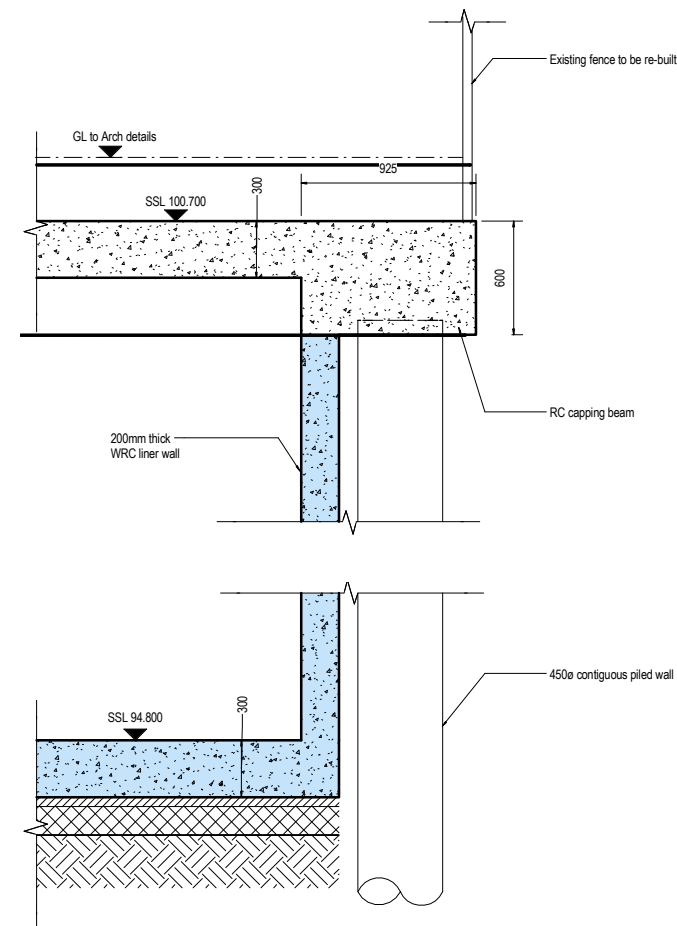
DETAIL 01 - STEEL FRAME ELEVATION

DWG 100 1:50



DETAIL 02 - BOX FRAME BASE

DWG 100 1:10



DETAIL 03

DWG 100 1:20

Rev	Date	Drawn	Eng	Amendments
P1	20.11.14	DP	BW	PRELIMINARY ISSUE

HEYNE TILLETTS STEEL
STRUCTURAL ENGINEERS

Job Name:
**4 WEDDERBURN ROAD
NW3**

Drawing Title:
PROPOSED BASEMENT DETAILS

Scale: As indicated at A1

Purpose of Issue: PRELIMINARY

Drawing No. 1220 / 101 Rev. P1

www.hts.uk.com

NOTES

- 1 This drawing is to be read in conjunction with all relevant Architects, Engineers and specialists drawings and specifications.
- 2 Do not scale from this drawing in either paper or digital form. Use written dimensions only. To check drawing has been printed to the intended scale the above bar should be 100mm long @ A1 or 50mm long @ A3

COLUMN SCHEDULE

C1	203 UC52
C2	139.7x10 CHS
C3	300sq RC column

BEAM SCHEDULE

B1	203 UC52
B2	165x171/305x82.0 USFB, S355 Precambered
B3	200x150x8.0 RHS
B4	152 UC30
CB1	500wd x 1000dp RC downstand beam
CB2	300wd x 600dp RC beam
DJ	Double joists
WP1	200x50 timber resin bolted at 600mm c/c

PROPOSED LEGEND

1	300mm thick RC ground bearing slab
2	225mm thick RC suspended slab
3	300mm thick RC suspended slab
4	150mm thick composite deck metal deck with A393 mesh
5	200x50 C16 timber joists at 400mm c/c with 18mm PLY over glued and screwed to top face

PADSTONES LEGEND

PS1	440g x 215dp x 100wd MC padstone
PS2	330g x 215dp x 100wd MC padstone

PILECAP SCHEDULE

PC1	1000x1000x600dp MC pad
PC2	925wdx600dp RC capping beam

P1	20.11.14	DP	BW	PRELIMINARY ISSUE
Rev	Date	Drawn	Eng	Amendments

HEYNE|TILLET|STEEL
STRUCTURAL ENGINEERS

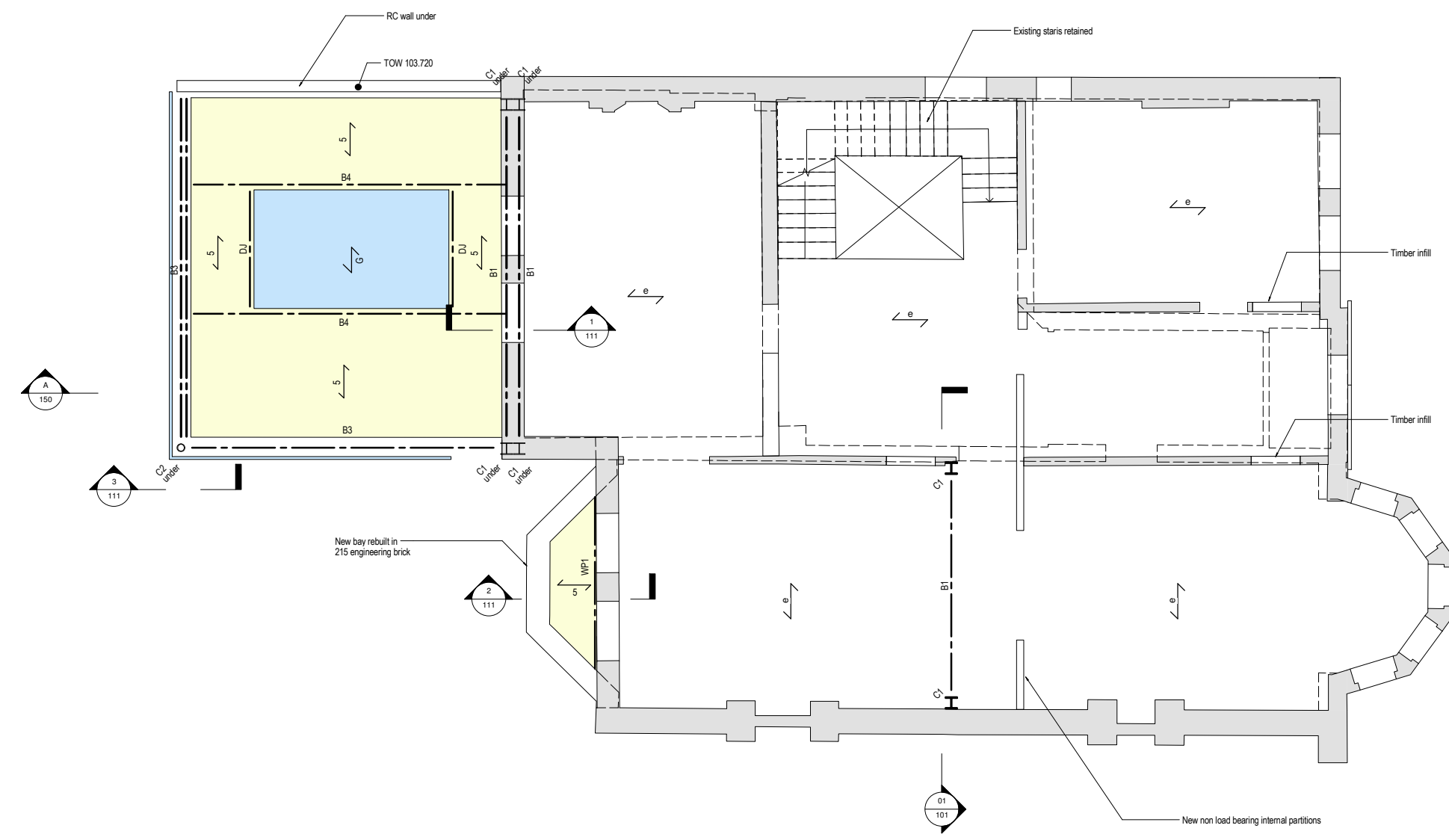
Job Name:
**4 WEDDERBURN ROAD
NW3**

Drawing Title:
PROPOSED FIRST FLOOR PLAN

Scale: 1:50 at A1

Purpose of Issue: **PRELIMINARY**

Drawing No. **1220 / 110** Rev. **P1**



NOTES

- 1 This drawing is to be read in conjunction with all relevant Architects, Engineers and specialists drawings and specifications.
- 2 Do not scale from this drawing in either paper or digital form. Use written dimensions only. To check drawing has been printed to the intended scale the above bar should be 100mm long @ A1 or 50mm long @ A3

COLUMN SCHEDULE

C1	203 UC52
C2	139.7x10 CHS
C3	300sq RC column

BEAM SCHEDULE

B1	203 UC52
B2	165x171/305x82.0 USFB. S355 Precambered
B3	200x150x8.0 RHS
B4	152 UC30
CB1	500wd x 1000dp RC downstand beam
CB2	300wd x 600dp RC beam
DJ	Double joists
WP1	200x50 timber resin bolted at 600mm c/c

PROPOSED LEGEND

1	300mm thick RC ground bearing slab
2	225mm thick RC suspended slab
3	300mm thick RC suspended slab
4	150mm thick composite deck metal deck with A393 mesh
5	200x50 C16 timber joists at 400mm c/c with 18mm PLY over glued and screwed to top face

PADSTONES LEGEND

PS1	440g x 215dp x 100wd MC padstone
PS2	330g x 215dp x 100wd MC padstone

PILECAP SCHEDULE

PC1	1000x1000x600dp MC pad
PC2	925wdx600dp RC capping beam

P1	20.11.14	DP	BW	PRELIMINARY ISSUE
Rev	Date	Drawn	Eng	Amendments

HEYNE TILLETTS STEEL
STRUCTURAL ENGINEERS

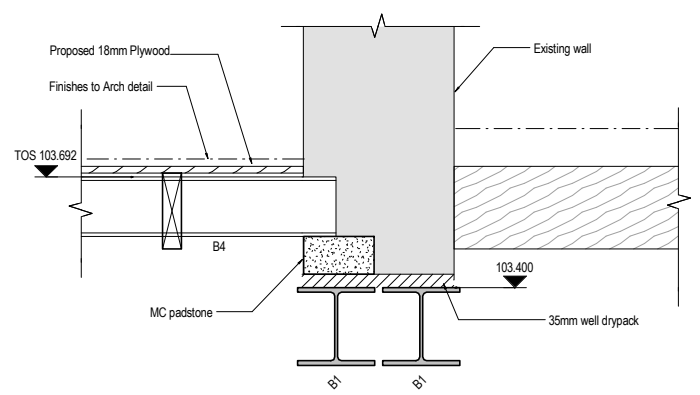
Job Name:
**4 WEDDERBURN ROAD
NW3**

Drawing Title:
PROPOSED FIRST FLOOR DETAILS

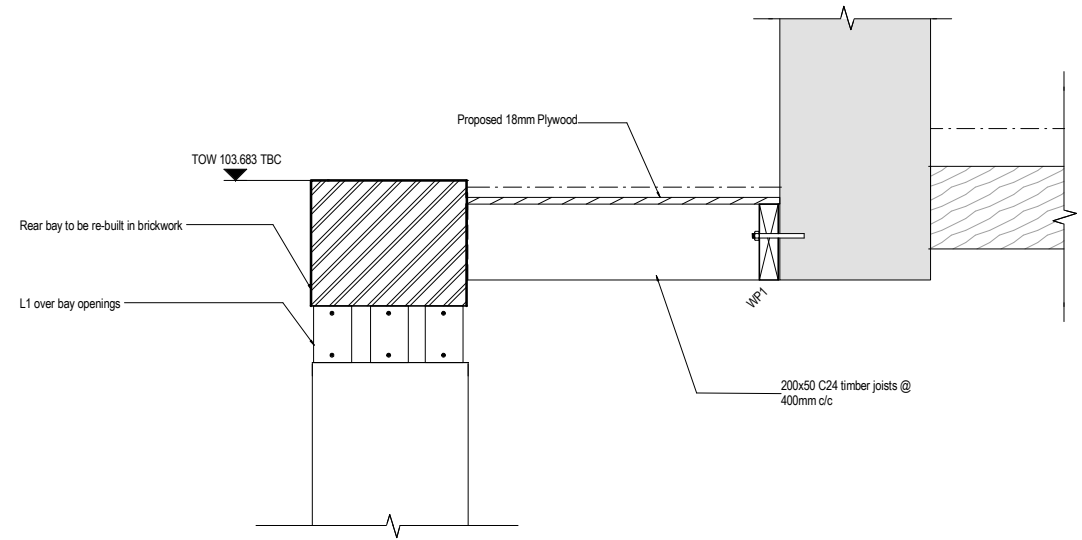
Scale: As indicated at A1

Purpose of Issue: **PRELIMINARY**

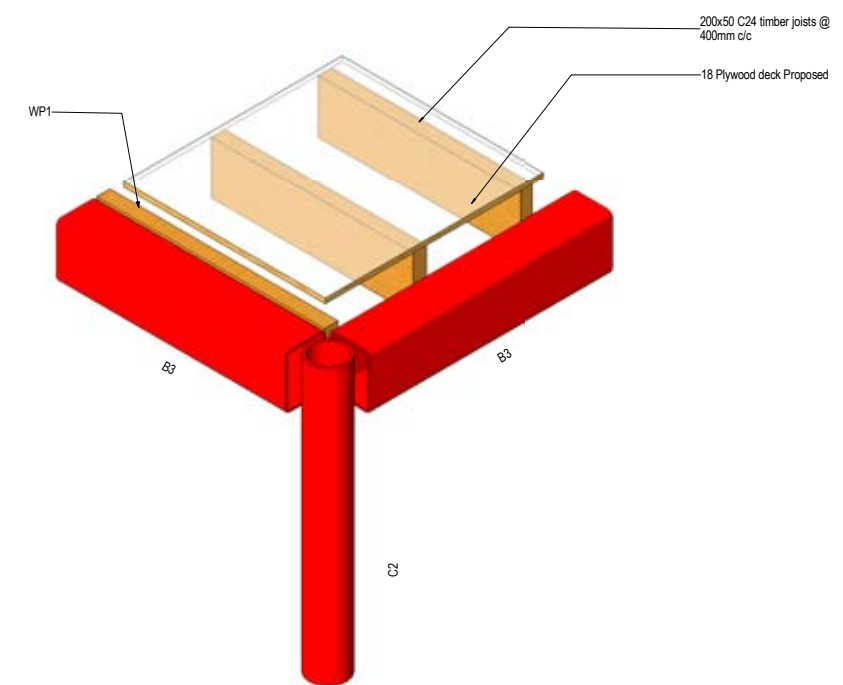
Drawing No. **1220 / 111** Rev. **P1**



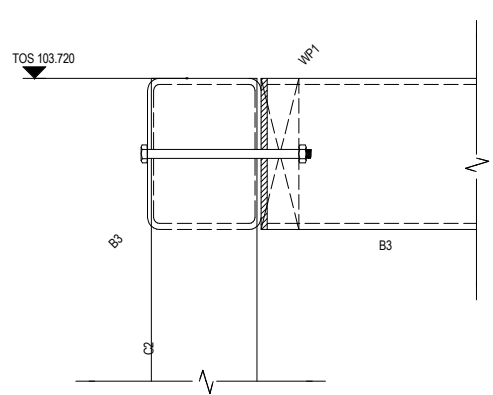
DWG **DETAIL 01**
110 1:10



DWG **DETAIL 02**
110 1:10



DETAIL 03 - 3d



DWG **DETAIL 03 - SECTION**
110 1:5

NOTES

- 1 This drawing is to be read in conjunction with all relevant Architects, Engineers and specialists drawings and specifications.
- 2 Do not scale from this drawing in either paper or digital form. Use written dimensions only. To check drawing has been printed to the intended scale the above bar should be 100mm long @ A1 or 50mm long @ A3

COLUMN SCHEDULE

C1	203 UC52
C2	139.7x10 CHS
C3	300sq RC column

BEAM SCHEDULE

B1	203 UC52
B2	165x171/305x82.0 USFB, S355 Precambered
B3	200x150x8.0 RHS
B4	152 UC30
CB1	500wd x 1000dp RC downstand beam
CB2	300wd x 600dp RC beam
DJ	Double joists
WP1	200x50 timber resin bolted at 600mm c/c

PROPOSED LEGEND

1	300mm thick RC ground bearing slab
2	225mm thick RC suspended slab
3	300mm thick RC suspended slab
4	150mm thick composite deck metal deck with A393 mesh
5	200x50 C16 timber joists at 400mm c/c with 18mm PLY over glued and screwed to top face

PADSTONES LEGEND

PS1	440g x 215dp x 100wd MC padstone
PS2	330g x 215dp x 100wd MC padstone

PILECAP SCHEDULE

PC1	1000x1000x600dp MC pad
PC2	925wdx600dp RC capping beam

P1	20.11.14	DP	BW	PRELIMINARY ISSUE
Rev	Date	Drawn	Eng	Amendments

HEYNE|TILLET|STEEL
STRUCTURAL ENGINEERS

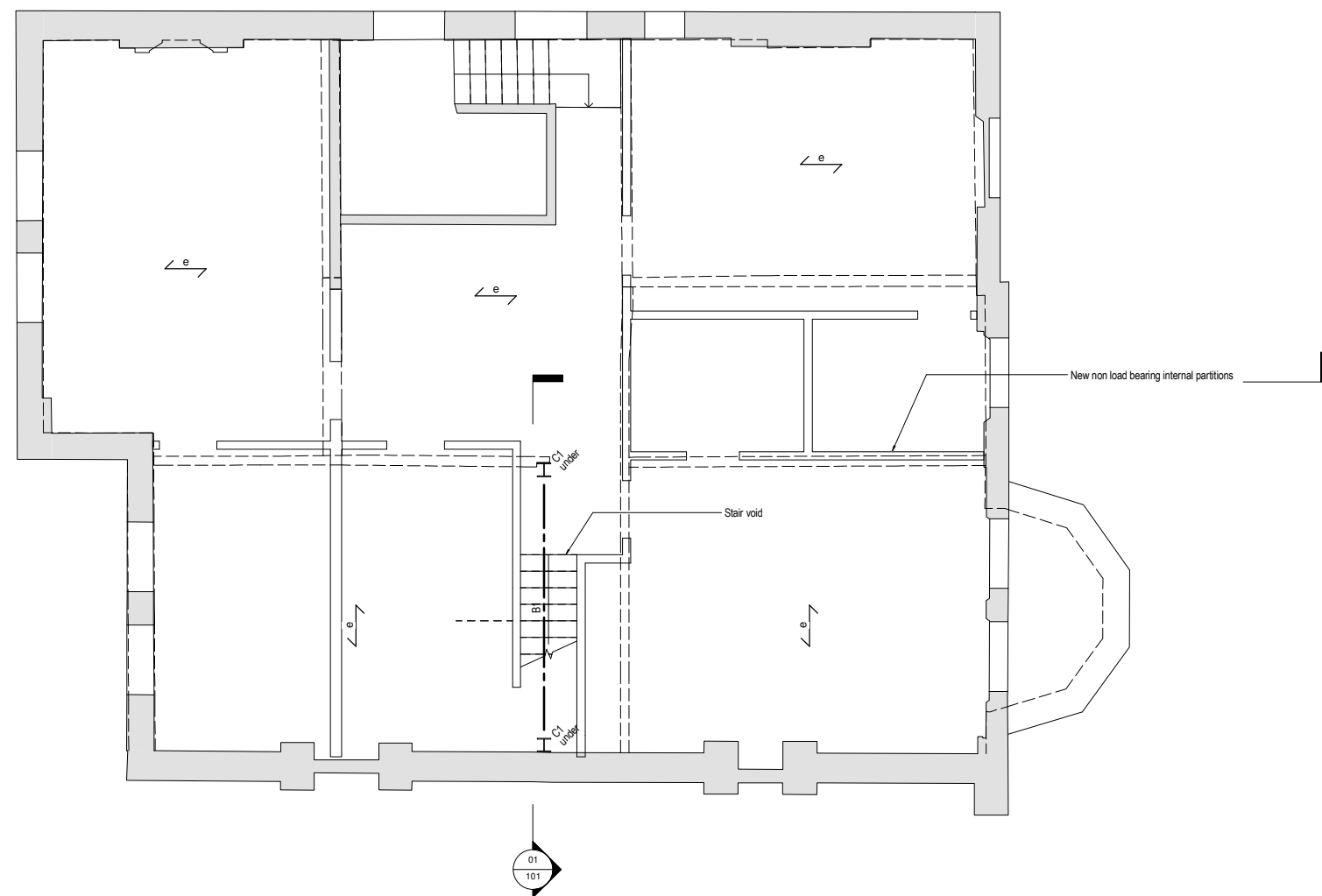
Job Name:
**4 WEDDERBURN ROAD
NW3**

Drawing Title:
PROPOSED SECOND FLOOR PLAN

Scale: 1:50 at A1

Purpose of Issue: **PRELIMINARY**

Drawing No. **1220 / 120** Rev. **P1**



NOTES

- 1 This drawing is to be read in conjunction with all relevant Architects, Engineers and specialists drawings and specifications.
- 2 Do not scale from this drawing in either paper or digital form. Use written dimensions only. To check drawing has been printed to the intended scale the above bar should be 100mm long @ A1 or 50mm long @ A3

COLUMN SCHEDULE

C1	203 UC52
C2	139.7x10 CHS
C3	300sq RC column

BEAM SCHEDULE

B1	203 UC52
B2	165x171/305x82.0 USFB. S355 Precambered
B3	200x150x8.0 RHS
B4	152 UC30
CB1	500wd x 1000dp RC downstand beam
CB2	300wd x 600dp RC beam
DJ	Double joists
WP1	200x50 timber resin bolted at 600mm c/c

PROPOSED LEGEND

	300mm thick RC ground bearing slab
	225mm thick RC suspended slab
	300mm thick RC suspended slab
	150mm thick composite deck metal deck with A393 mesh
	200x50 C16 timber joists at 400mm c/c with 18mm PLY over glued and screwed to top face

PADSTONES LEGEND

PS1	440g x 215dp x 100wd MC padstone
PS2	330g x 215dp x 100wd MC padstone

PILECAP SCHEDULE

PC1	1000x1000x600dp MC pad
PC2	925wdx600dp RC capping beam

P1	20.11.14	DP	BW	PRELIMINARY ISSUE
Rev	Date	Drawn	Eng	Amendments

HEYNE|TILLET|STEEL
STRUCTURAL ENGINEERS

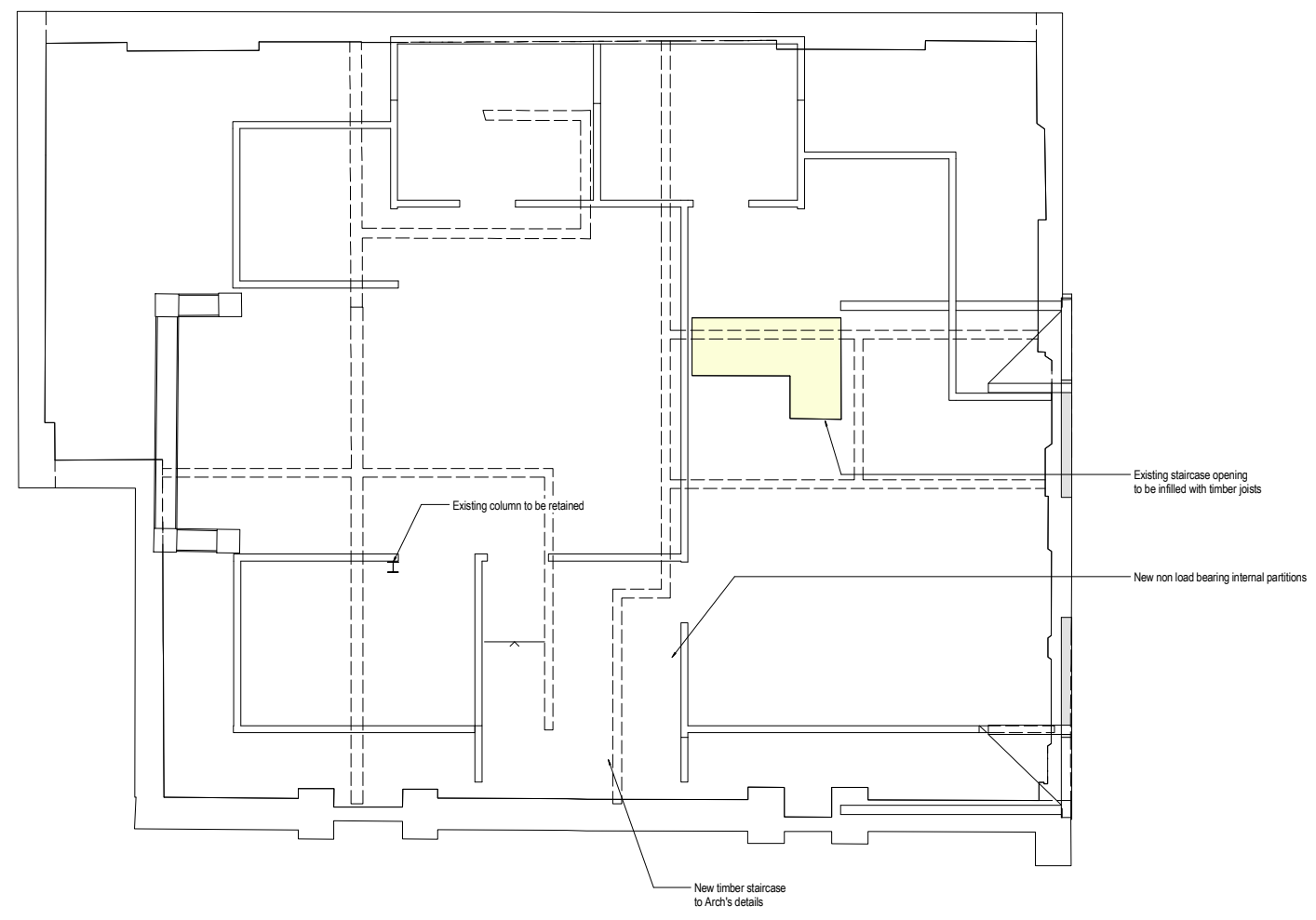
Job Name:
**4 WEDDERBURN ROAD
NW3**

Drawing Title:
PROPOSED THIRD FLOOR PLAN

Scale: 1:50 at A1

Purpose of Issue: **PRELIMINARY**

Drawing No. **1220 / 130** Rev. **P1**



NOTES

- 1 This drawing is to be read in conjunction with all relevant Architects, Engineers and specialists drawings and specifications.
- 2 Do not scale from this drawing in either paper or digital form. Use written dimensions only. To check drawing has been printed to the intended scale the above bar should be 100mm long @ A1 or 50mm long @ A3

COLUMN SCHEDULE

C1	203 UC52
C2	139.7x10 CHS
C3	300sq RC column

BEAM SCHEDULE

B1	203 UC52
B2	165x171/305x82.0 USFB. S355 Precambered
B3	200x150x8.0 RHS
B4	152 UC30
CB1	500wd x 1000dp RC downstand beam
CB2	300wd x 600dp RC beam
DJ	Double joists
WP1	200x50 timber resin bolted at 600mm c/c

PROPOSED LEGEND

	300mm thick RC ground bearing slab
	225mm thick RC suspended slab
	300mm thick RC suspended slab
	150mm thick composite deck metal deck with A393 mesh
	200x50 C16 timber joists at 400mm c/c with 18mm PLY over glued and screwed to top face

PADSTONES LEGEND

PS1	440g x 215dp x 100wd MC padstone
PS2	330g x 215dp x 100wd MC padstone

PILECAP SCHEDULE

PC1	1000x1000x600dp MC pad
PC2	925wdx600dp RC capping beam

P1	20.11.14	DP	BW	PRELIMINARY ISSUE
Rev	Date	Drawn	Eng	Amendments

HEYNE|TILLET|STEEL
STRUCTURAL ENGINEERS

Job Name:
**4 WEDDERBURN ROAD
NW3**

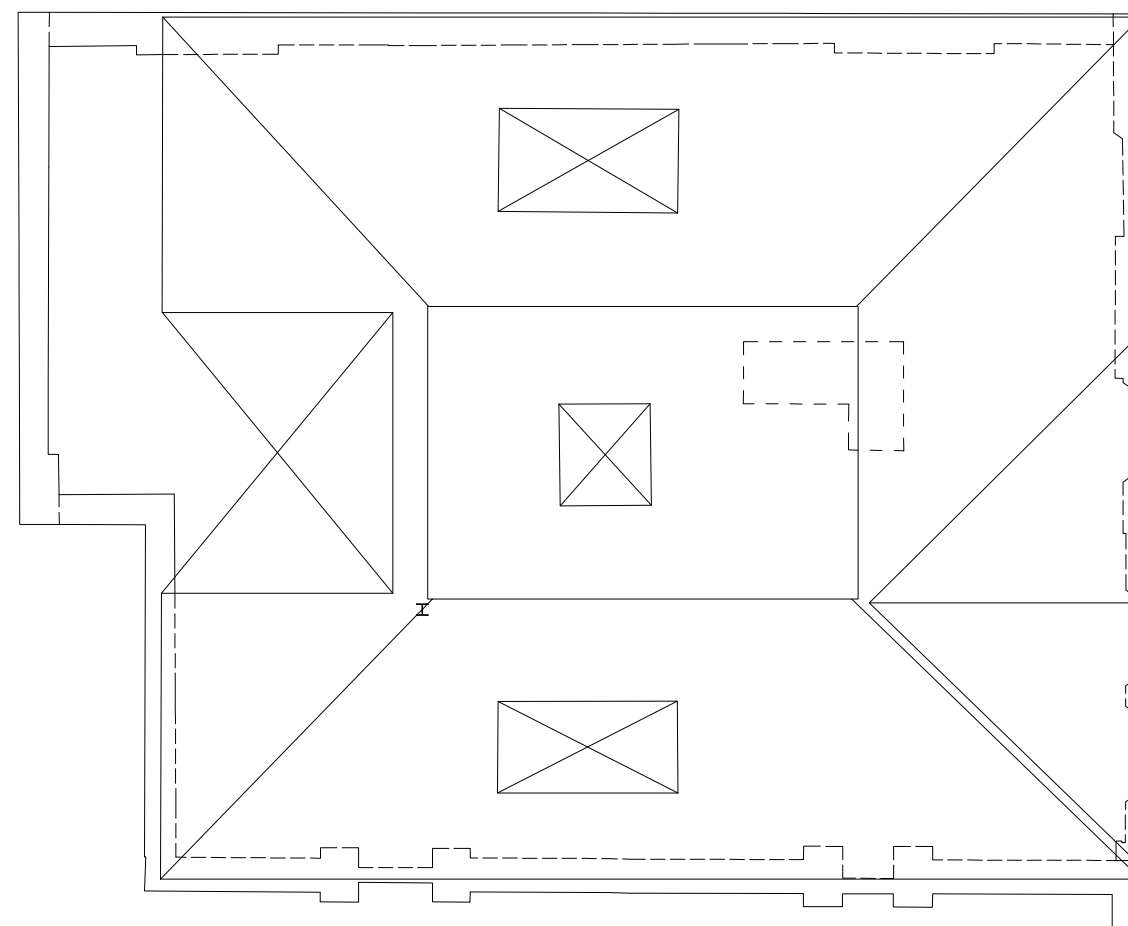
Drawing Title:
PROPOSED ROOF PLAN

Scale: 1:50 at A1

Purpose of Issue: **PRELIMINARY**

Drawing No. **1220 / 140** Rev. **P1**

www.hts.uk.com



NOTES

- 1 This drawing is to be read in conjunction with all relevant Architects, Engineers and specialists drawings and specifications.
- 2 Do not scale from this drawing in either paper or digital form. Use written dimensions only. To check drawing has been printed to the intended scale the above bar should be 100mm long @ A1 or 50mm long @ A3

COLUMN SCHEDULE

C1	203 UC52
C2	139.7x10 CHS
C3	300sq RC column

BEAM SCHEDULE

B1	203 UC52
B2	165x171/305x82.0 USFB. S355 Precambered
B3	200x150x8.0 RHS
B4	152 UC30
CB1	500wd x 1000dp RC downstand beam
CB2	300wd x 600dp RC beam
DJ	Double joists
WP1	200x50 timber resin bolted at 600mm c/c

PROPOSED LEGEND

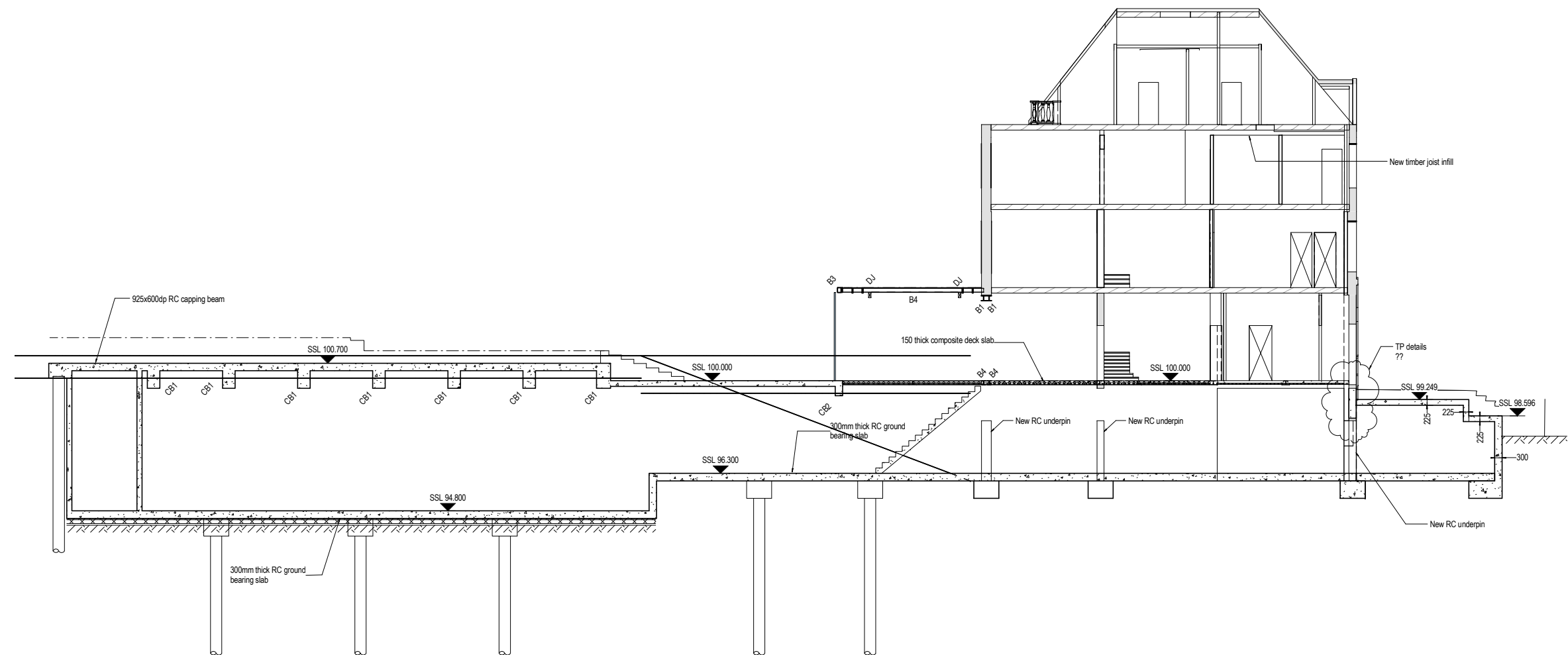
1	300mm thick RC ground bearing slab
2	225mm thick RC suspended slab
3	300mm thick RC suspended slab
4	150mm thick composite deck metal deck with A393 mesh
5	200x50 C16 timber joists at 400mm c/c with 18mm PLY over glued and screwed to top face

PADSTONES LEGEND

PS1	440g x 215dp x 100wd MC padstone
PS2	330g x 215dp x 100wd MC padstone

PILECAP SCHEDULE

PC1	1000x1000x600dp MC pad
PC2	925wdx600dp RC capping beam



P1	20.11.14	DP	BW	PRELIMINARY ISSUE
Rev	Date	Drawn	Eng	Amendments

HEYNE|TILLET|STEEL
STRUCTURAL ENGINEERS

Job Name:
**4 WEDDERBURN ROAD
NW3**

Drawing Title:
PROPOSED SECTION AA

Scale: 1:100 at A1

Purpose of Issue: **PRELIMINARY**

Drawing No. **1220 / 150** Rev. **P1**

NOTES

- 1 This drawing is to be read in conjunction with all relevant Architects, Engineers and specialists drawings and specifications.
- 2 Do not scale from this drawing in either paper or digital form. Use written dimensions only. To check drawing has been printed to the intended scale the above bar should be 100mm long @ A1 or 50mm long @ A3

COLUMN SCHEDULE

C1	203 UC52
C2	139.7x10 CHS
C3	300sq RC column

BEAM SCHEDULE

B1	203 UC52
B2	165x171/305x82.0 USFB. S355 Precambered
B3	200x150x8.0 RHS
B4	152 UC30
CB1	500wd x 1000dp RC downstand beam
CB2	300wd x 600dp RC beam
DJ	Double joists
WP1	200x50 timber resin bolted at 600mm c/c

PROPOSED LEGEND

1	300mm thick RC ground bearing slab
2	225mm thick RC suspended slab
3	300mm thick RC suspended slab
4	150mm thick composite deck metal deck with A393 mesh
5	200x50 C16 timber joists at 400mm c/c with 18mm PLY over glued and screwed to top face

PADSTONES LEGEND

PS1	440g x 215dp x 100wd MC padstone
PS2	330g x 215dp x 100wd MC padstone

PILECAP SCHEDULE

PC1	1000x1000x600dp MC pad
PC2	925wdx600dp RC capping beam

P1	20.11.14	DP	BW	PRELIMINARY ISSUE
Rev	Date	Drawn	Eng	Amendments

HEYNE|TILLET|STEEL
STRUCTURAL ENGINEERS

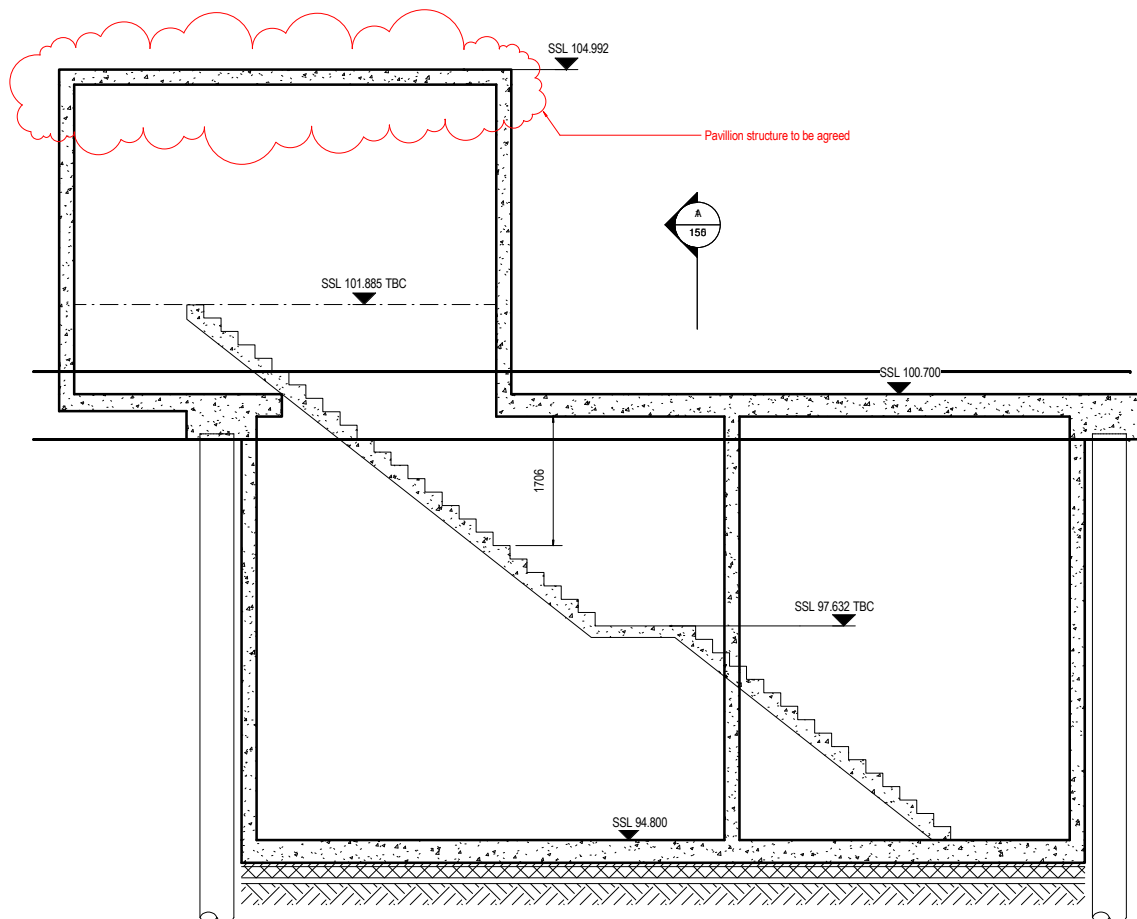
Job Name:
**4 WEDDERBURN ROAD
NW3**

Drawing Title:
PROPOSED SECTION B-B AND C-C

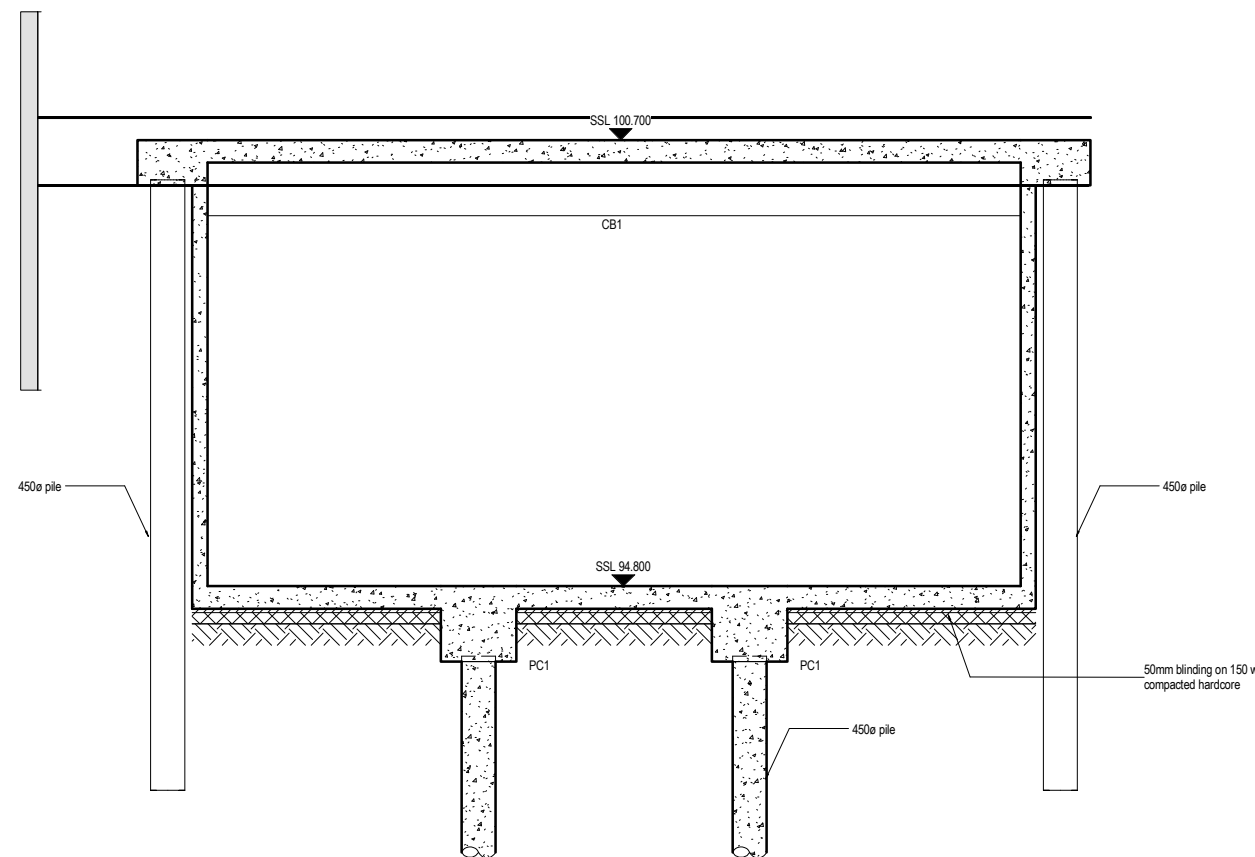
Scale: 1:50 at A1

Purpose of Issue: **PRELIMINARY**

Drawing No. **1220 / 151** Rev. **P1**



DWG 100 SECTION B-B
1:50



DWG 100 SECTION C-C
1:50

NOTES

- 1 This drawing is to be read in conjunction with all relevant Architects, Engineers and specialists drawings and specifications.
- 2 Do not scale from this drawing in either paper or digital form. Use written dimensions only. To check drawing has been printed to the intended scale the above bar should be 100mm long @ A1 or 50mm long @ A3

COLUMN SCHEDULE

C1	203 UC52
C2	139.7x10 CHS
C3	300sq RC column

BEAM SCHEDULE

B1	203 UC52
B2	165x171/305x82.0 USFB, S355 Precambered
B3	200x150x8.0 RHS
B4	152 UC30
CB1	500wd x 1000dp RC downstand beam
CB2	300wd x 600dp RC beam
DJ	Double joists
WP1	200x50 timber resin bolted at 600mm c/c

PROPOSED LEGEND

1	300mm thick RC ground bearing slab
2	225mm thick RC suspended slab
3	300mm thick RC suspended slab
4	150mm thick composite deck metal deck with A393 mesh
5	200x50 C16 timber joists at 400mm c/c with 18mm PLY over glued and screwed to top face

PADSTONES LEGEND

PS1	440g x 215dp x 100wd MC padstone
PS2	330g x 215dp x 100wd MC padstone

PILECAP SCHEDULE

PC1	1000x1000x600dp MC pad
PC2	925wdx600dp RC capping beam

P1	20.11.14	DP	BW	PRELIMINARY ISSUE
Rev	Date	Drawn	Eng	Amendments

HEYNE TILLETTS STEEL
STRUCTURAL ENGINEERS

Job Name:
**4 WEDDERBURN ROAD
NW3**

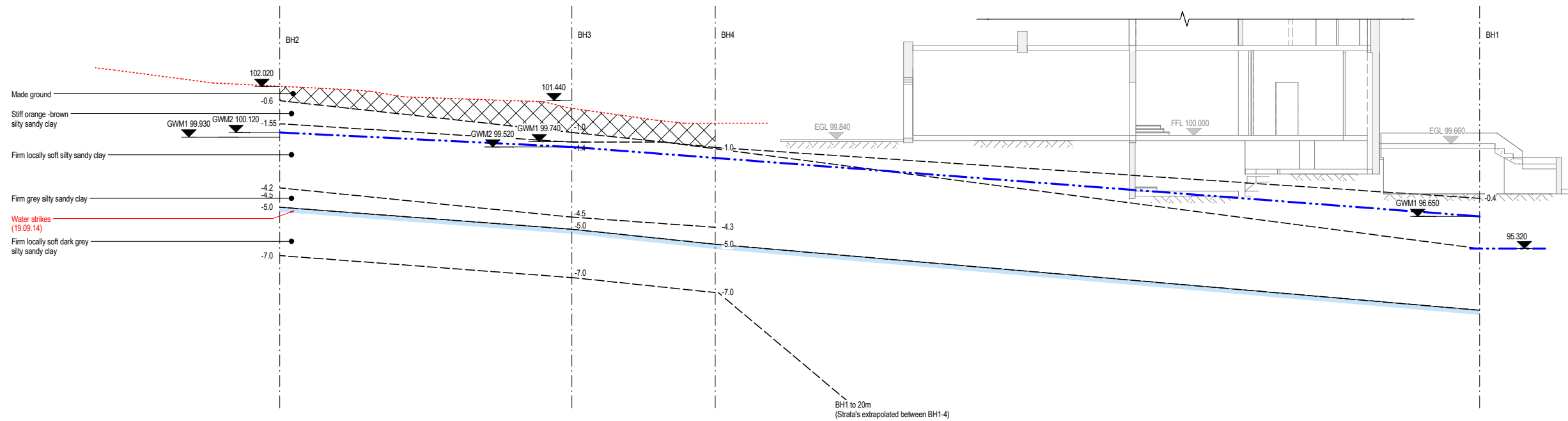
Drawing Title:
WATER LEVEL

Scale: 1:100 at A1

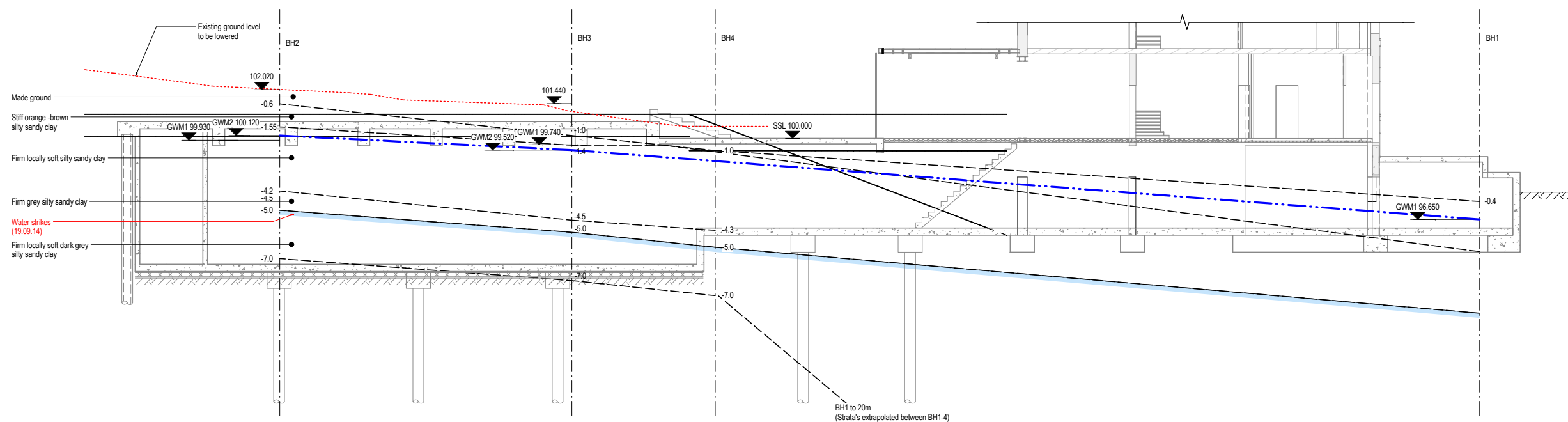
Purpose of Issue: **PRELIMINARY**

Drawing No. **1220 / 155** Rev. **P1**

www.hts.uk.com



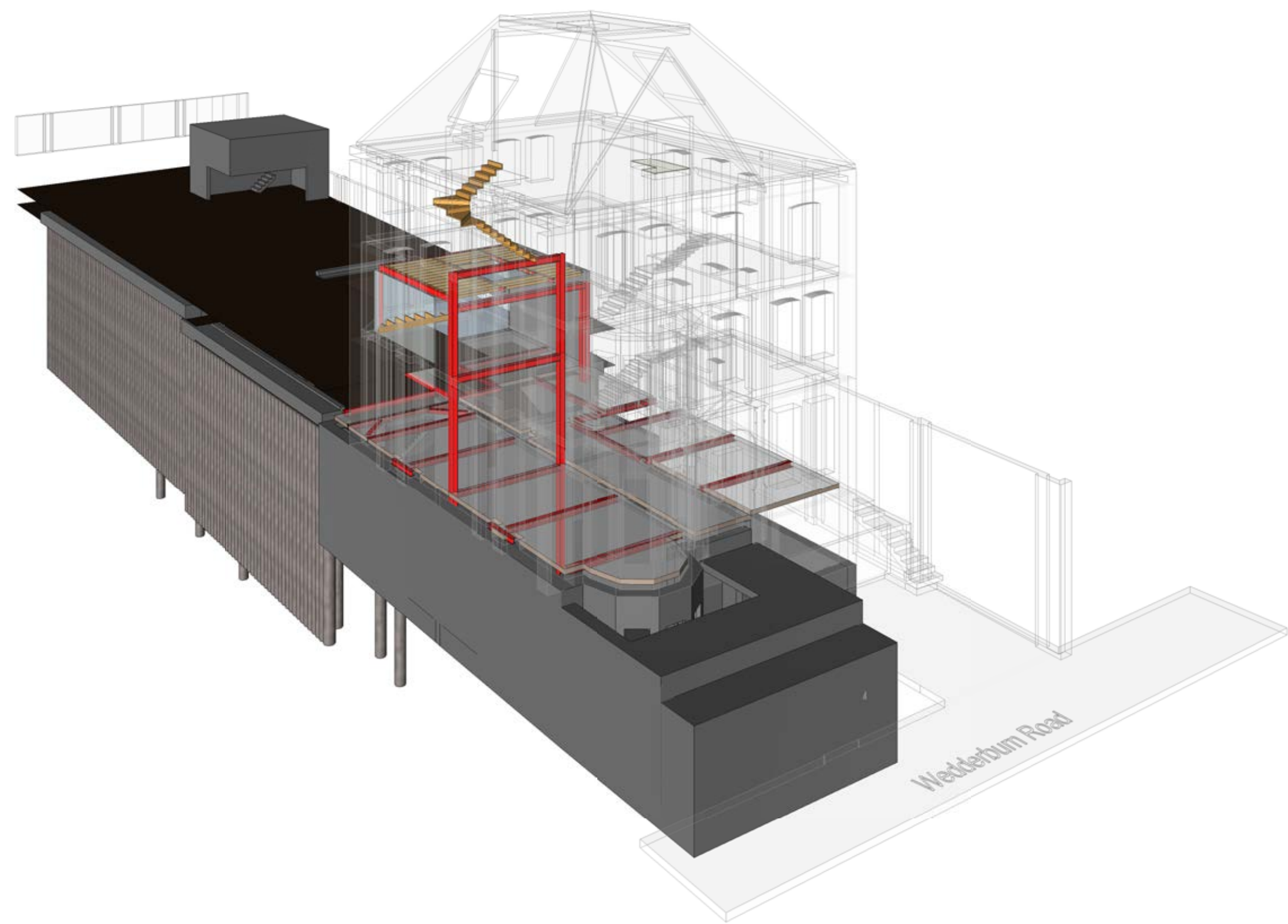
DWG 010 EXISTING SECTION WITH WATER LEVEL
1:100



DWG 100 PROPOSED SECTION WITH WATER LEVEL
1:100

NOTES

- 1 This drawing is to be read in conjunction with all relevant Architects, Engineers and specialists drawings and specifications.
- 2 Do not scale from this drawing in either paper or digital form. Use written dimensions only. To check drawing has been printed to the intended scale the above bar should be 100mm long @ A1 or 50mm long @ A3



Rev	Date	Drawn	Eng	Amendments
P1	20.11.14	DP	BW	PRELIMINARY ISSUE

HEYNE TILLETTS STEEL
STRUCTURAL ENGINEERS

Job Name:
**4 WEDDERBURN ROAD
NW3**

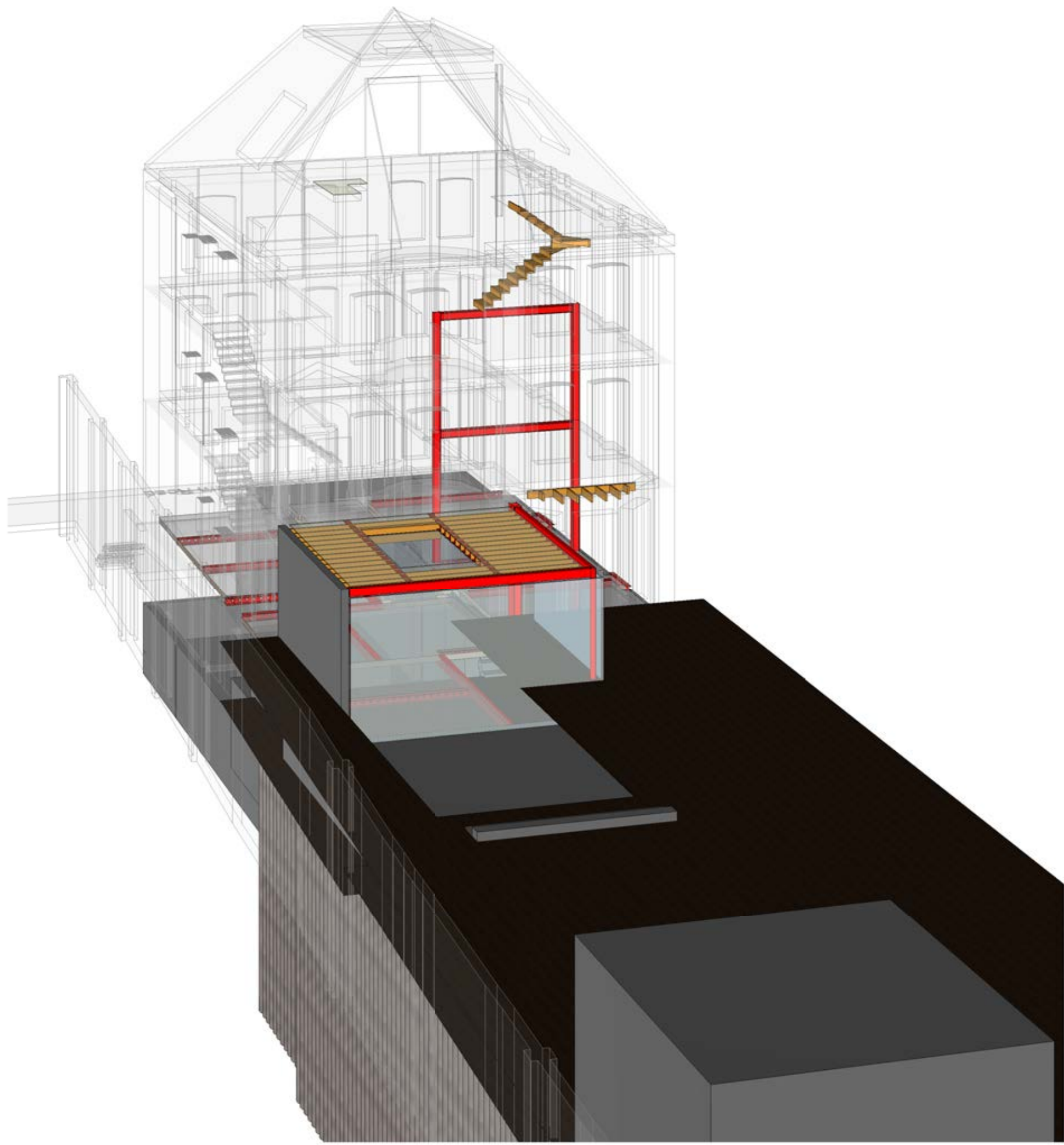
Drawing Title:
**PROPOSED PERSPECTIVE FRONT
VIEW**

Scale: _____ at A1
Purpose of Issue: _____ PRELIMINARY

Drawing No. _____ Rev. _____
1220 / 160 **P1**

NOTES

- 1 This drawing is to be read in conjunction with all relevant Architects, Engineers and specialists drawings and specifications.
- 2 Do not scale from this drawing in either paper or digital form. Use written dimensions only. To check drawing has been printed to the intended scale the above bar should be 100mm long @ A1 or 50mm long @ A3



P1	20.11.14	DP	BW	PRELIMINARY ISSUE
Rev	Date	Drawn	Eng	Amendments

HEYNE|TILLET|STEEL
STRUCTURAL ENGINEERS

Job Name:
**4 WEDDERBURN ROAD
NW3**

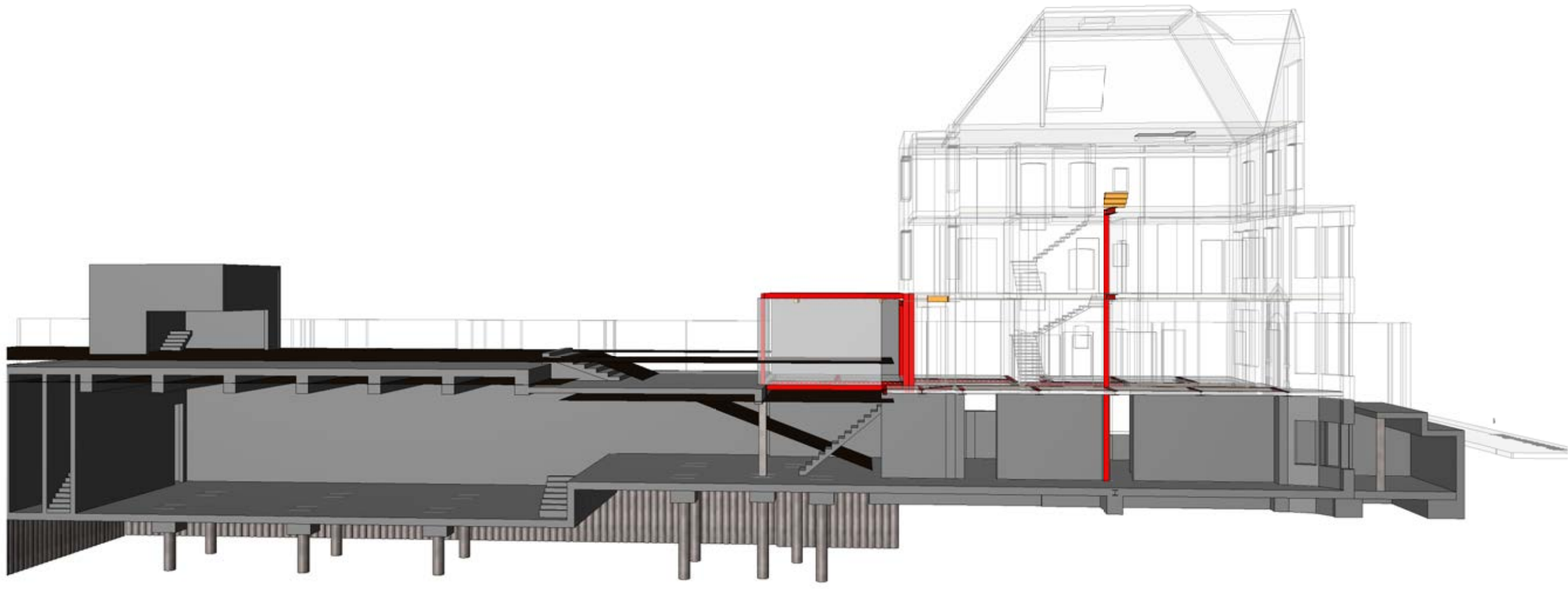
Drawing Title:
**PROPOSED PERSPECTIVE REAR
VIEW**

Scale: _____ at A1
Purpose of Issue: _____ PRELIMINARY

Drawing No. _____ Rev. _____
1220 / 161 **P1**

NOTES

- 1 This drawing is to be read in conjunction with all relevant Architects, Engineers and specialists drawings and specifications.
- 2 Do not scale from this drawing in either paper or digital form. Use written dimensions only. To check drawing has been printed to the intended scale the above bar should be 100mm long @ A1 or 50mm long @ A3



Rev	Date	Drawn	Eng	Amendments
P1	20.11.14	DP	BW	PRELIMINARY ISSUE

HEYNE|TILLET|STEEL
STRUCTURAL ENGINEERS

Job Name:
**4 WEDDERBURN ROAD
NW3**

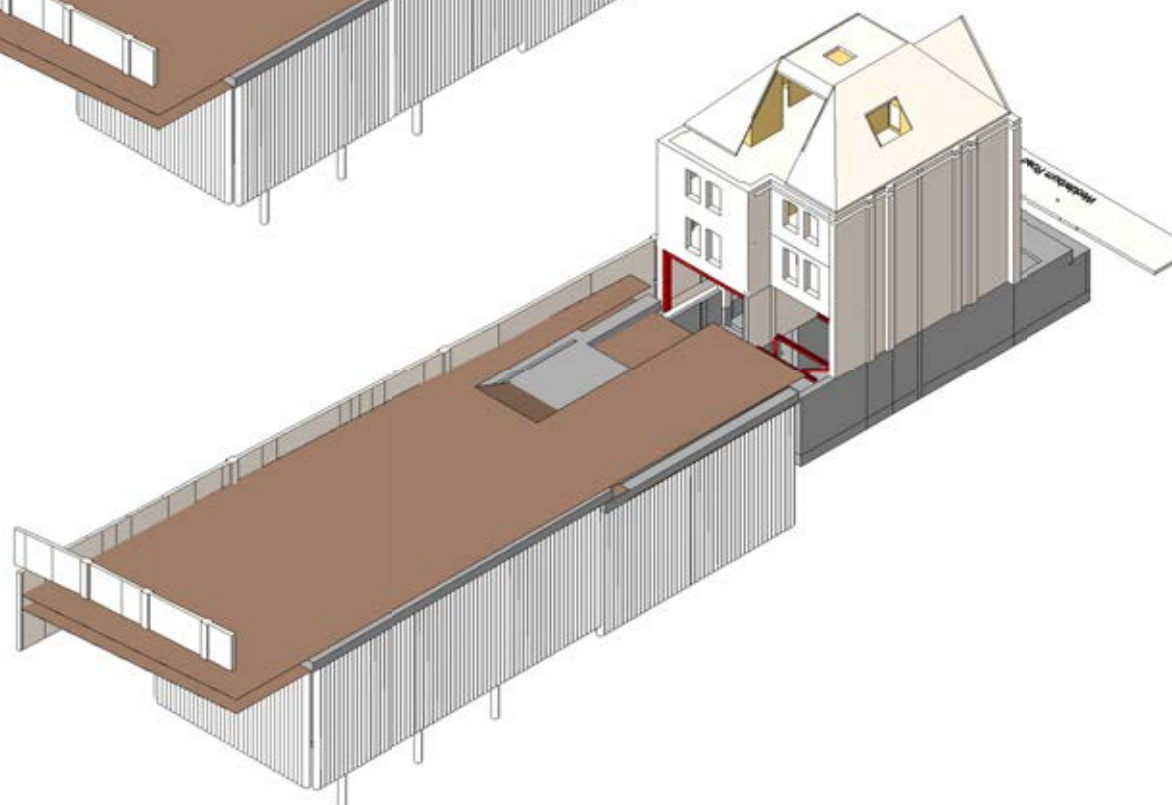
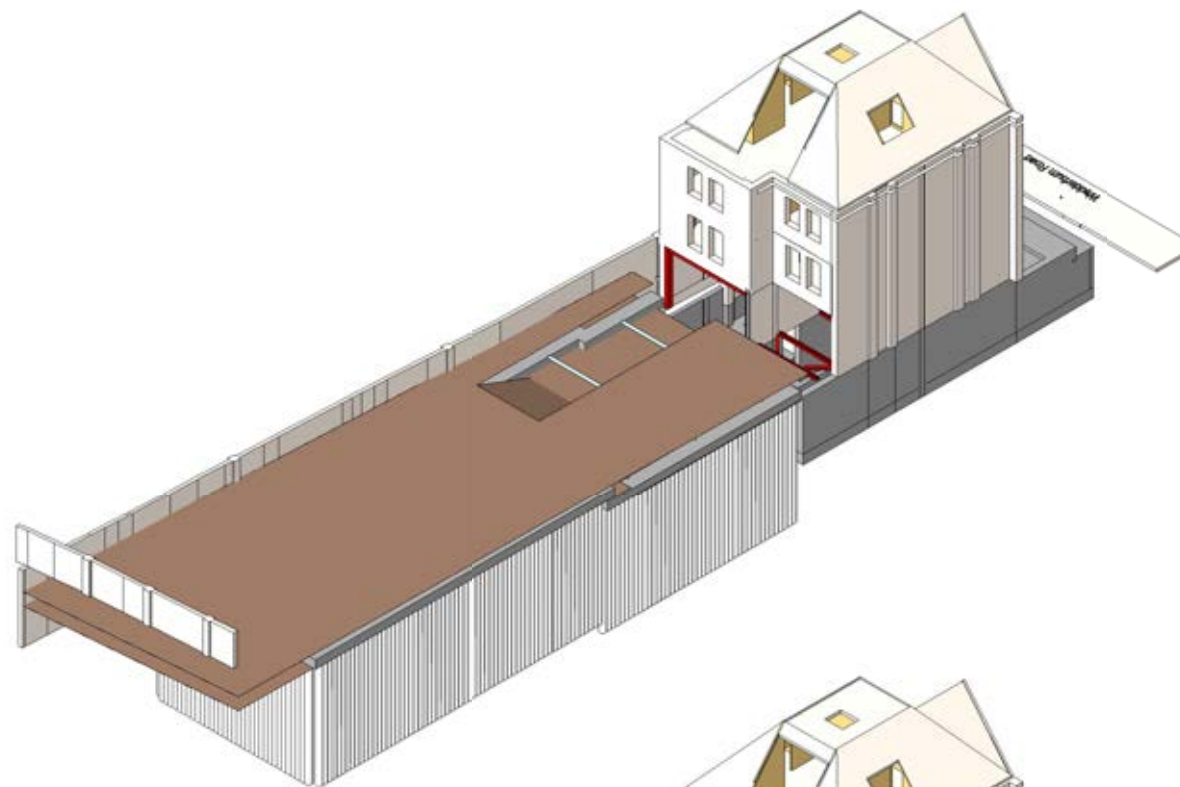
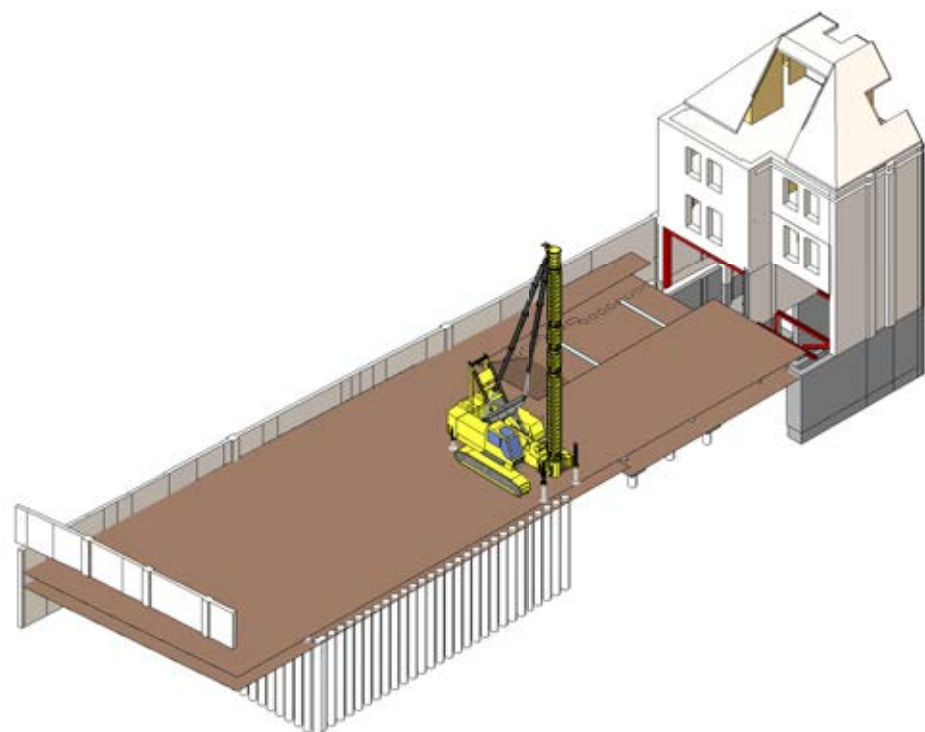
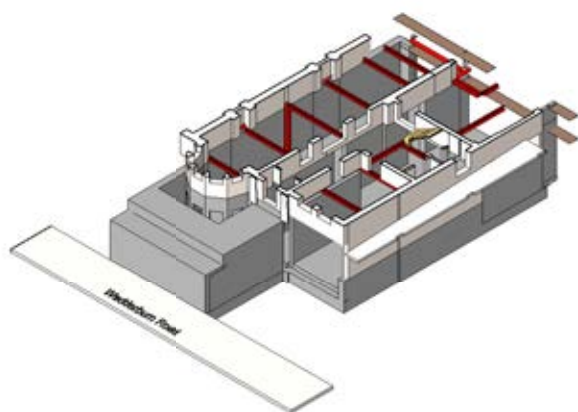
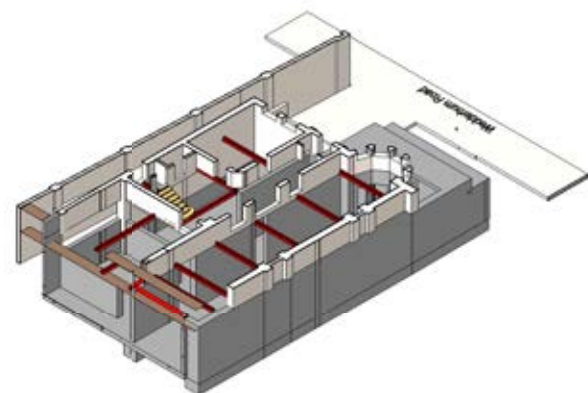
Drawing Title:
**PROPOSED PERSPECTIVE
SECTION VIEW**

Scale: _____ at A1
Purpose of Issue: _____ PRELIMINARY

Drawing No. _____ Rev. _____
1220 / 162 **P1**

NOTES

- 1 This drawing is to be read in conjunction with all relevant Architects, Engineers and specialists drawings and specifications.
- 2 Do not scale from this drawing in either paper or digital form. Use written dimensions only. To check drawing has been printed to the intended scale the above bar should be 100mm long @ A1 or 50mm long @ A3



P1	20.11.14	DP	BW	PRELIMINARY ISSUE
Rev	Date	Drawn	Eng	Amendments

HEYNE TILLETTS STEEL
STRUCTURAL ENGINEERS

Job Name:
4 WEDDERBURN ROAD
NW3

Drawing Title:
PROPOSED CONSTRUCTION
SEQUENCE 1

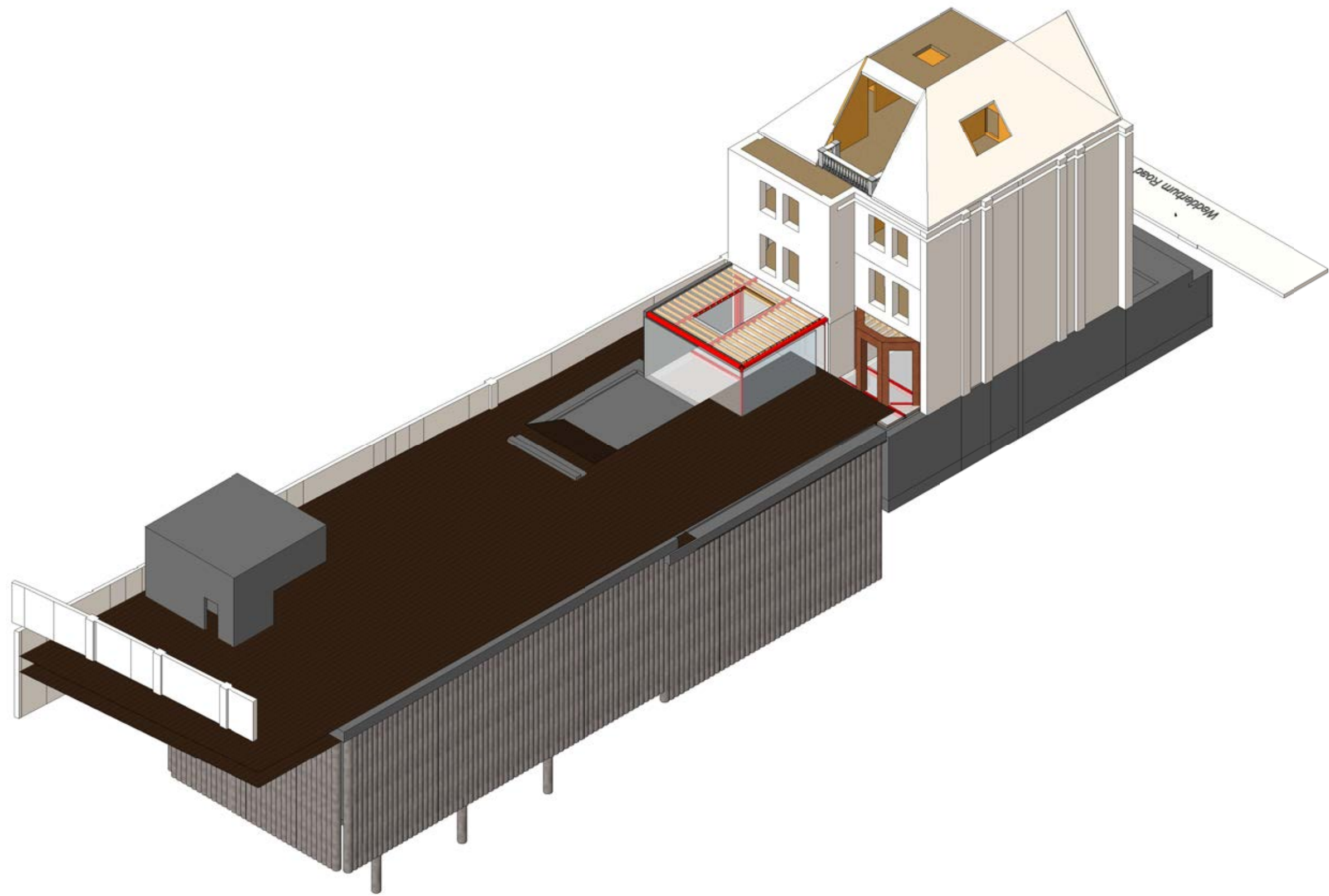
Scale: _____ at A1

Purpose of Issue: _____ PRELIMINARY

Drawing No. 1220 / 163 Rev. P1

NOTES

- 1 This drawing is to be read in conjunction with all relevant Architects, Engineers and specialists drawings and specifications.
- 2 Do not scale from this drawing in either paper or digital form. Use written dimensions only. To check drawing has been printed to the intended scale the above bar should be 100mm long @ A1 or 50mm long @ A3



Rev	Date	Drawn	Eng	Amendments
P1	20.11.14	DP	BW	PRELIMINARY ISSUE

HEYNE TILLETTS STEEL
STRUCTURAL ENGINEERS

Job Name:
4 WEDDERBURN ROAD
NW3

Drawing Title:
PROPOSED CONSTRUCTION
SEQUENCE 2

Scale: _____ at A1
Purpose of Issue: _____ PRELIMINARY

Drawing No. **1220 / 164** Rev. **P1**