

MATERIALS LEGEND

- 1. White render
- 2. Green wall
- 3. Reclaimed timber lengths spaced apart fixed to retaining wall
- 4. Planted privacy screen



datum 110.00m

**Rev B - 091009**

Dining room reduced north by 500mm.

Kitchen moved north.

Site fence of north boundary to 89 Redington Road indicated.

**Rev A**

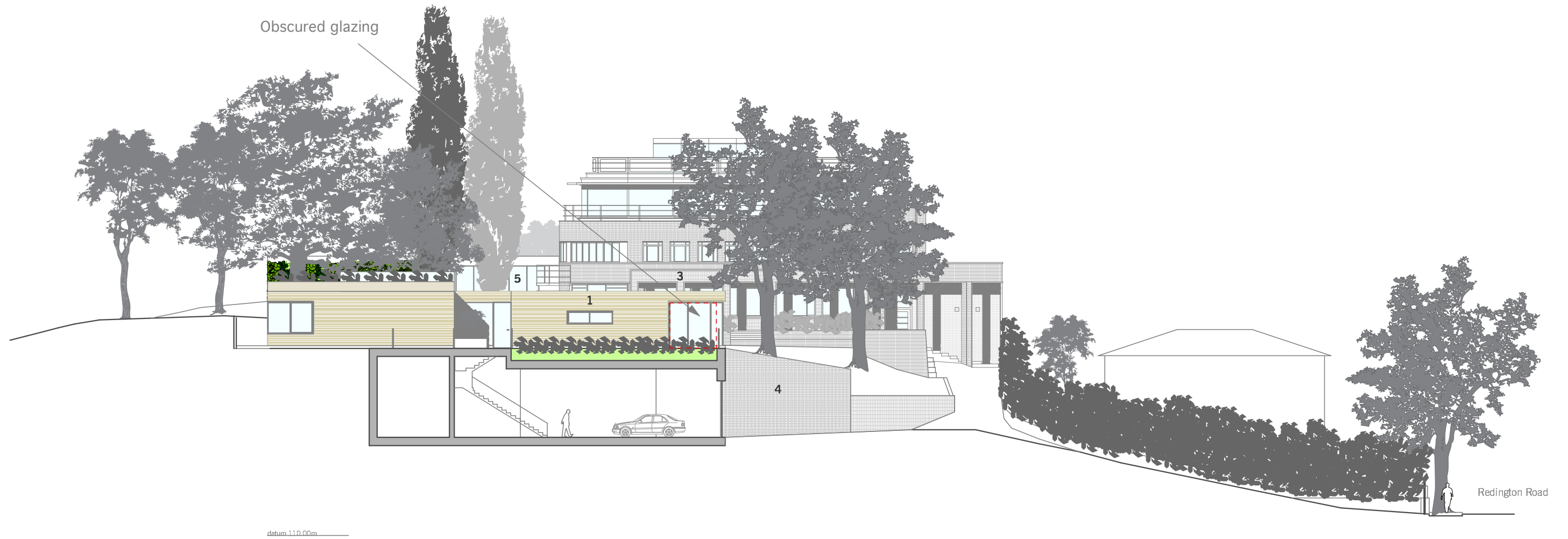
Planters and guarding added to roof of annex to make it non-accessible.

Picture window added to west elevation of rear extension.

Context of 85A added to drawing.

MATERIALS LEGEND

1. Reclaimed timber lengths spaced apart fixed in front of glazing
2. Green wall
3. Vertical red bricks to match existing
4. New retaining wall
5. Glass constructed link



**Rev B - 091009**

Basement level lowered.

**Rev A**

Non-accessible low level planter added to south of annex.

1.2m glazed screens added to prevent access and overlooking.

1/3 of library window specified obscured glass and non-openable.

Planters and guarding added to roof of annex at rear.

MATERIALS LEGEND

- 1. White render



Part Section Through Proposed Extension

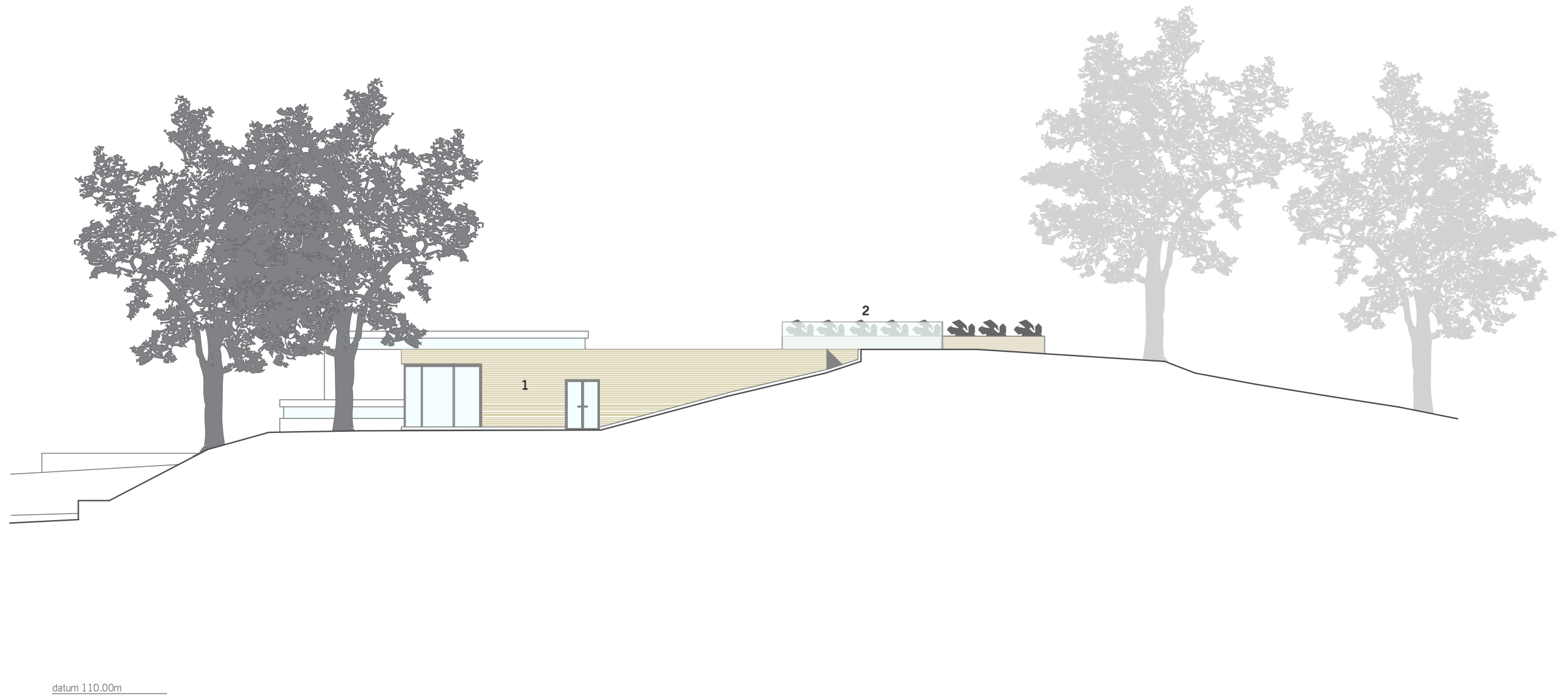
datum 110.00m

Rev A - 091009

Dining room and kitchen moved west to protect root ball of poplar T6.

MATERIALS LEGEND

1. Reclaimed timber lengths spaced apart fixed in front of glazing
2. Planted privacy screen



**Rev B - 091009**

South extension cut back to protect root ball of oak T11.

**Rev A**

Planters and guarding added to roof of annex to make it non-accessible.





1. Detail of existing building
2. View of garden looking east
3. Existing garage from garden
4. View up drive from Redington Road
5. View of garage entrance
6. View of drive and brick retaining walls
7. View of south elevation
8. View of rear of garden
9. View of rear of garden