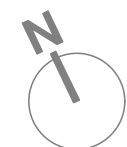




Rev A - 091009
 Outline of proposed extension revised.



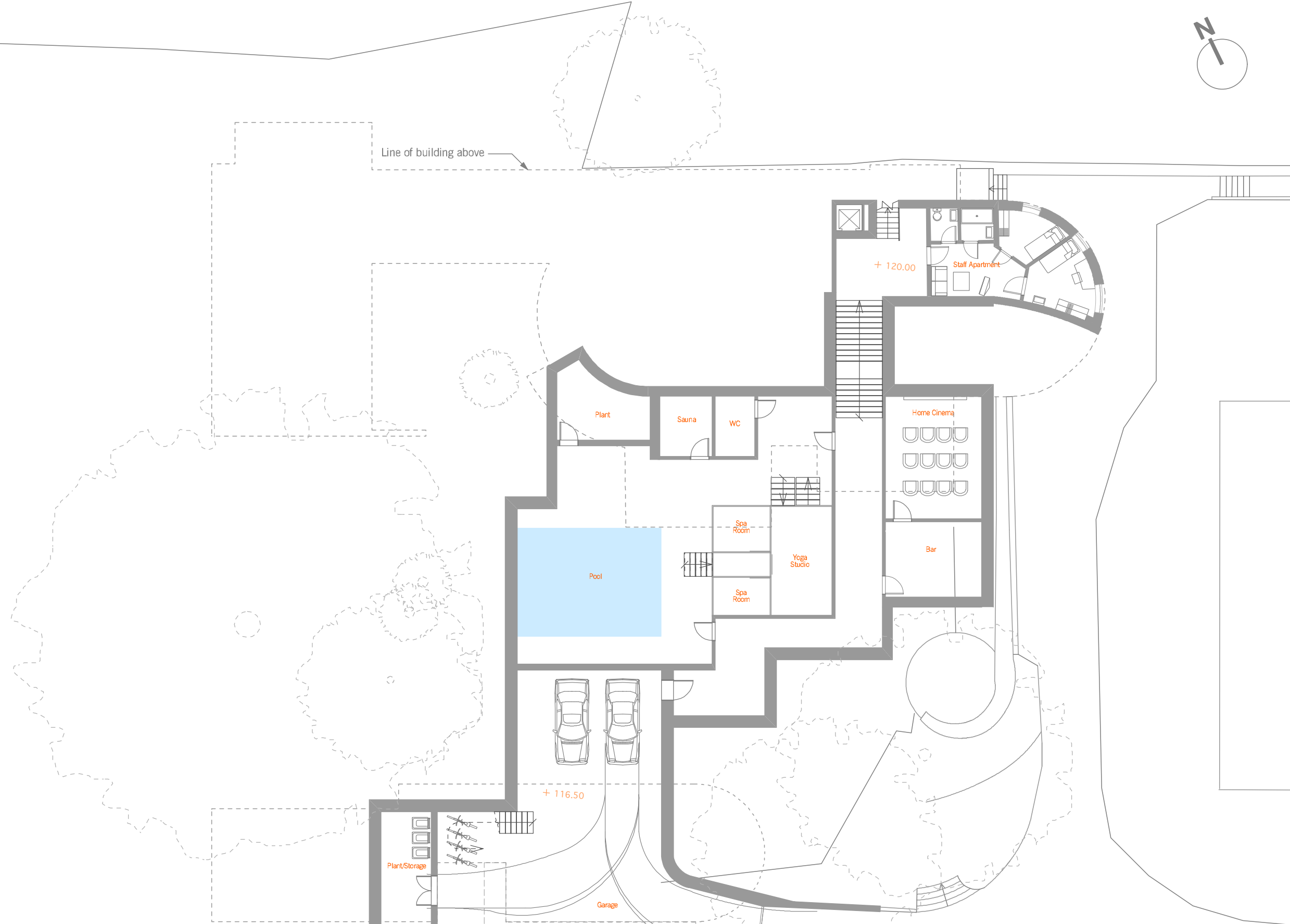
Line of building above



Rev A - 091009
Basement reduced south to protect root ball of poplar T6.
Outline of proposed extension above revised.



Line of building above



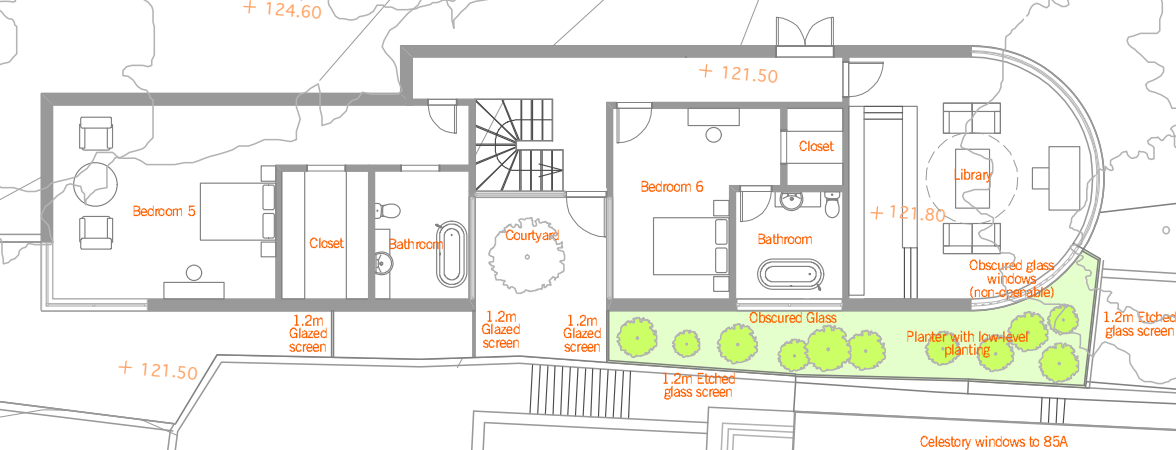
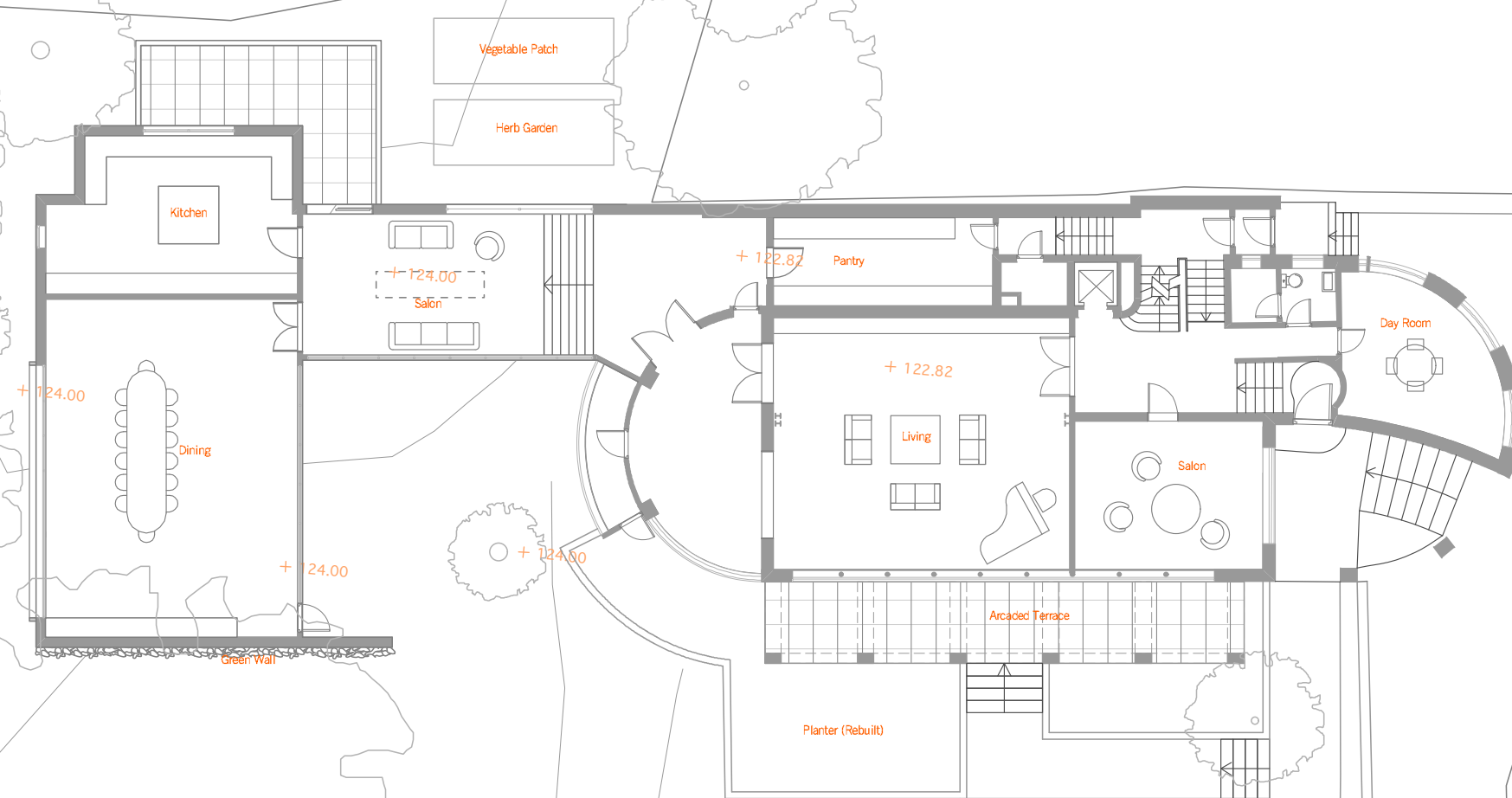
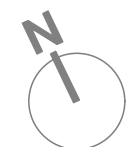
Rev A - 091009

Basement reduced south to protect root ball of poplar T6.

Light well next to sauna omitted and replaced by plant.

Outline of proposed building above revised.





Rev B - 091009

Dining room and kitchen moved west to protect root ball of poplar T6. Dining room reduced north by 500 mm. Hall widened.

Glass link removed.

South extension cut back to protect root ball of oak T11.

Rev A

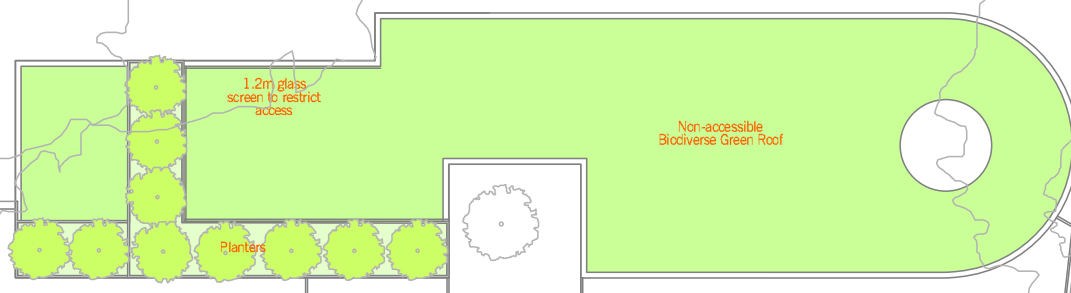
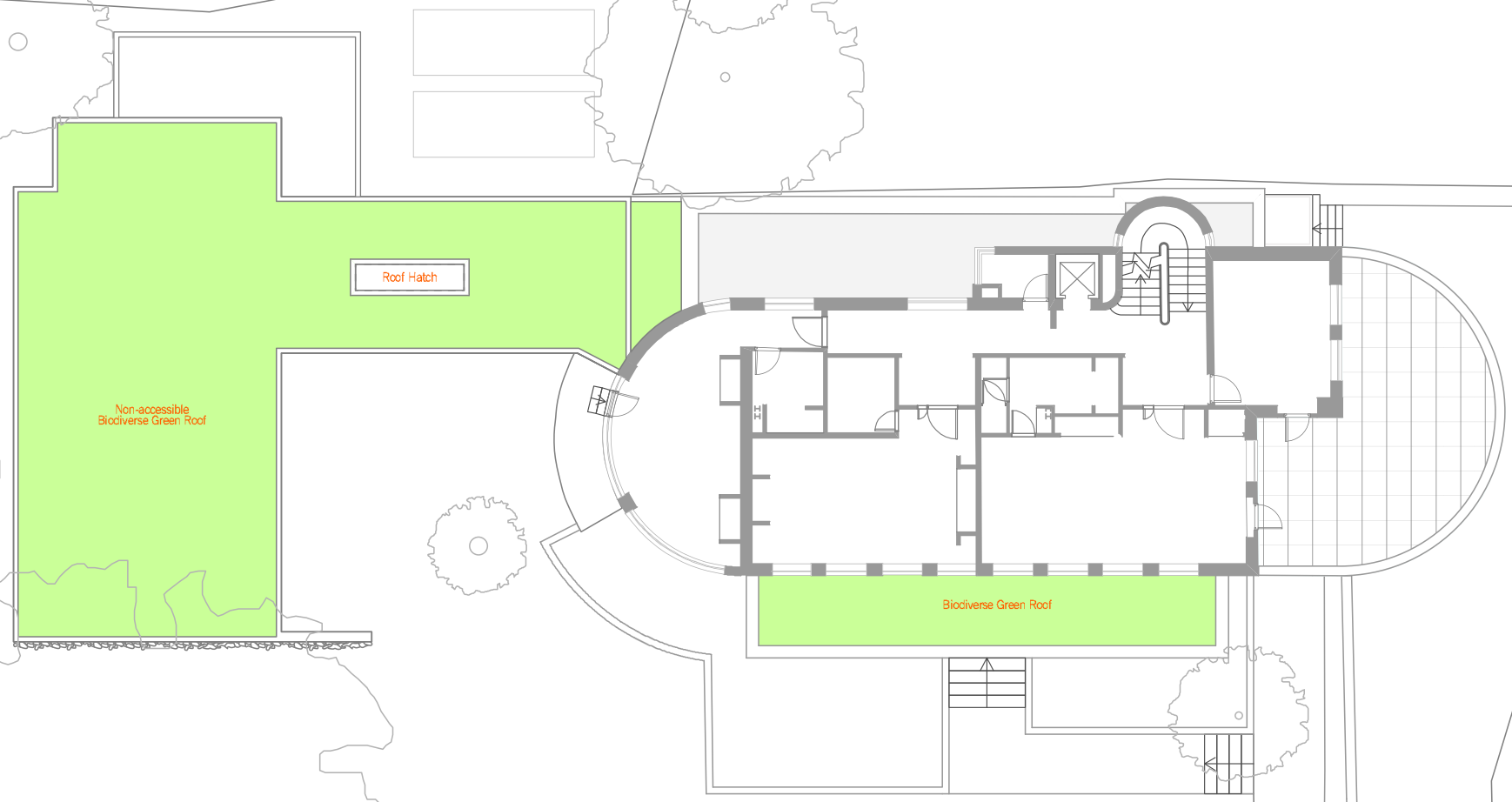
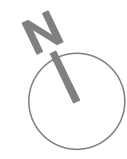
Non-accessible low level planter added to south of annex.

1.2m glazed screens added to prevent access and overlooking to no 85A.

1/3 of library window specified obscured glass and non-openable.

Picture window added to west elevation of rear extension.





Rev B - 091009

Glass link removed.

Roof of proposed extension revised.

Rev A

Planters added to annex roof.

Glazed screen added to annex roof to prevent access.

