

**General notes:**

This drawing is copyright of KSR architects. This drawing must be read in conjunction with the designer's risk assessment, specification and all other relevant documentation and drawings. KSR architects accept no liability for any expense, loss or damage of whatsoever nature and however arising from any variation made to this drawing or in the execution of the work to which it relates which has not been referred to them and their approval obtained.

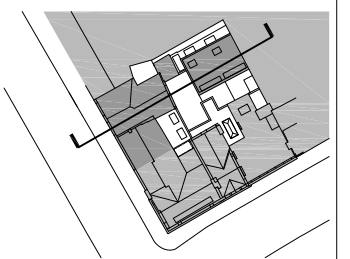
Do not scale from this drawing or the digital data, only figured dimensions are to be used. For Planning refer to linear scale.

Check all dimensions on site.



Rev	Notes	dd.mm.yy	By	Chkd
B	Issued for Planning Submission	26.10.12	LV	GJ
A	Issued for Planning Section reference and Unit mix revised.	07.06.12	LV	GJ
.	Issued for Planning Submission	16.04.12	LV	GJ

© KSR architects



**KSR**  
architects

KSR architects  
14 Greenland Street  
London  
NW1 0ND

t: +44 (0)20 7692 5000  
f: +44 (0)20 7692 5050  
www.ksr-architects.com

Project:  
**172A Arlington Road  
London NW1 7HL**

Title:  
**PROPOSED  
Building Sections  
Section A-A**

Date: 10.02.12 Drawn By: LV Checked:  
Scale: 1:50 @ A1 / 1:100 @ A3

Project Ref: <b>ARL</b>	Drawing No: <b>ARL-PL-200</b>	Revision: <b>B</b>
----------------------------	----------------------------------	-----------------------