

STACKING SHUTTER SYSTEM

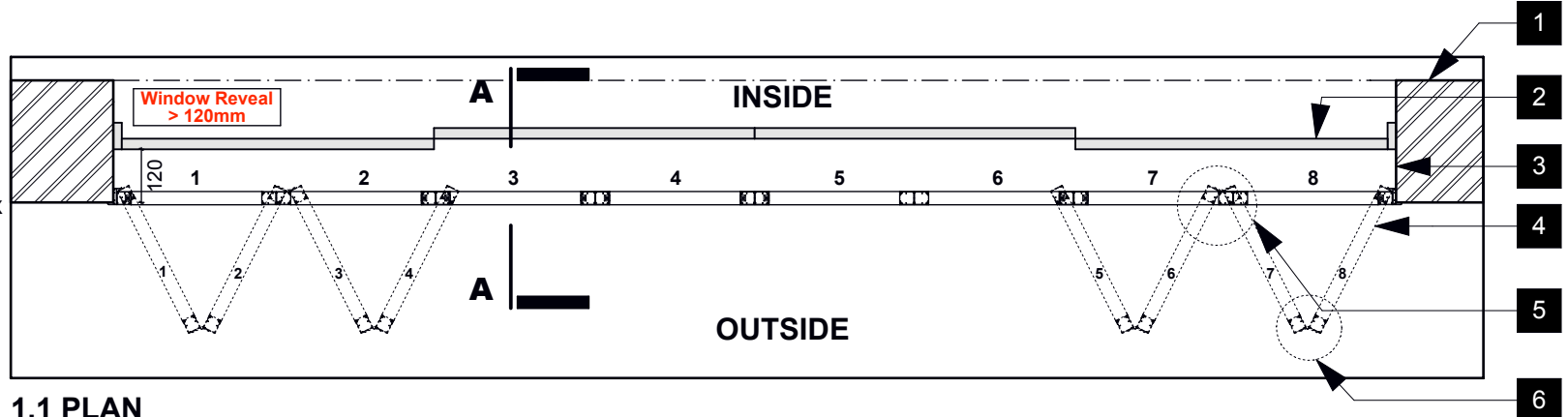
1. Plantation Security Shutter - Reveal Fix

High Security - Adjustable Louvre - Aluminium Shutter.

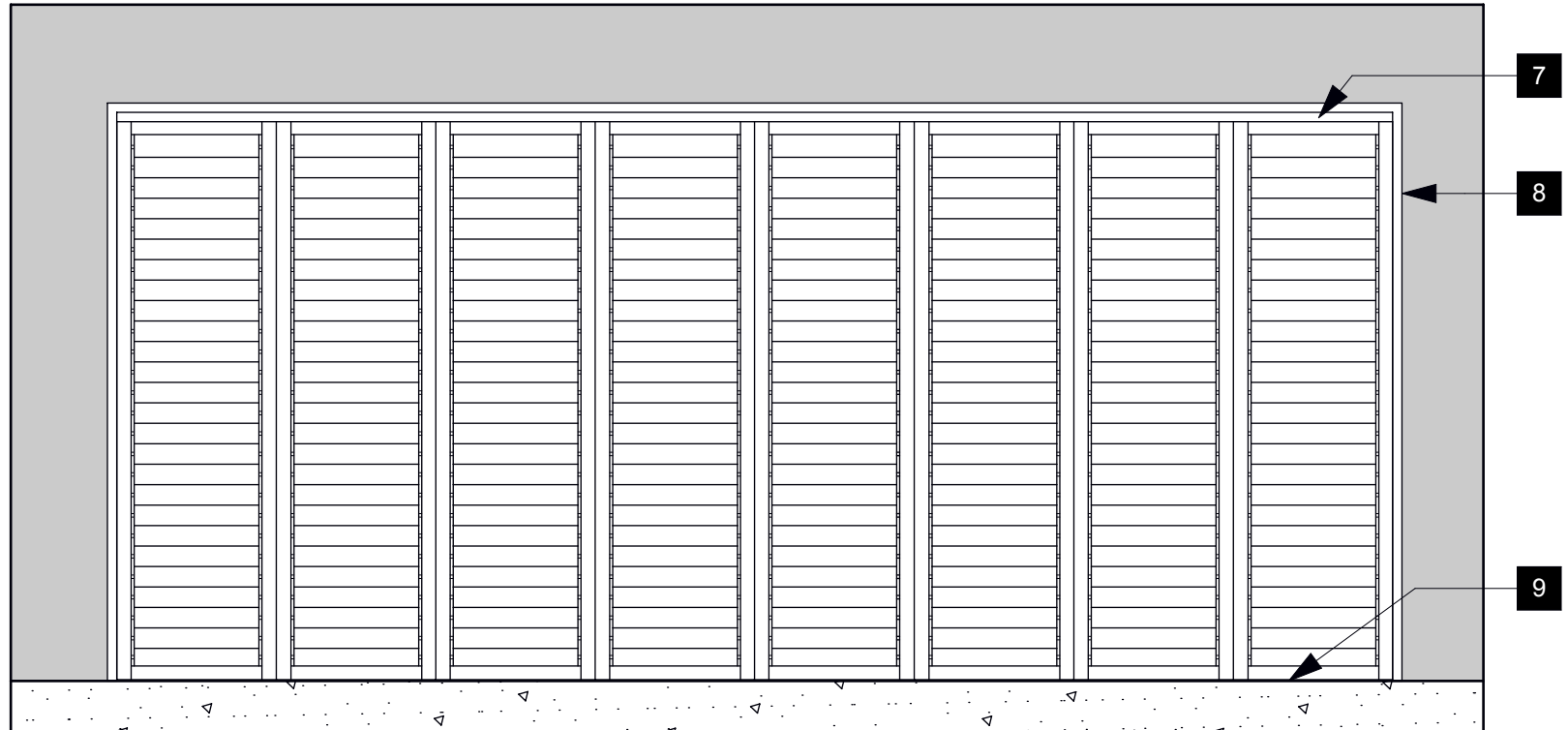
- The security component of the Plantation Security Shutter is the VIRO 5 Pin Cylinder Lock which is locked with a key. The lock operates a 2 way hardened aluminum bolting system which locks the shutter into both the top and bottom of the opening.
- The shutter louvres can be locked with an aluminium clip on the handrail. (optional)
- The Plantation Security Shutter offers a fantastic "stacking" solution both internally & externally. The shutters are mounted on sliding/pivoting hangers at the top; a guide at the bottom and hinges between the shutters to allow for optimum stacking/folding movement.
- The Reveal Fix System is optimal in situations that a Door Reveal is 120mm or greater.

COMPONENT LEGEND

No.	DESCRIPTION
1	Wall
2	Sliding/ Stacking Door
3	Reveal
4	Sliding/folding action
5	Hanger & Guide pt.
6	Shutters Hinged
7	Top Track
8	Frame on 3 sides
9	Recessed Bottom Track



1.1 PLAN
Not To Scale



1.2 ELEVATION
Not To Scale