

EMILY  
GREEVES  
ARCHITECTS

Emily Greeves Architects  
101-103 Heath Street  
London NW3 6SS  
[www.emilygreeves.com](http://www.emilygreeves.com)  
[mail@emilygreeves.com](mailto:mail@emilygreeves.com)  
+44 (0)7830 342388

Please note:  
1. All dimensions to be checked on site before fabrication.  
2. Contractor to refer to engineer's drawings before construction.  
3. Samples to be provided by contractor for EGA approval.  
4. All finishes to EGA satisfaction.  
5. All drawings to be approved by EGA before construction.  
6. All drawings and designs are covered by Design Right (Intellectual Property) and may not be distributed, copied or issued without written permission of EGA.  
7. All design concepts are the sole property of EGA and no adaptations, reproductions or copies may be made without written permission of EGA.

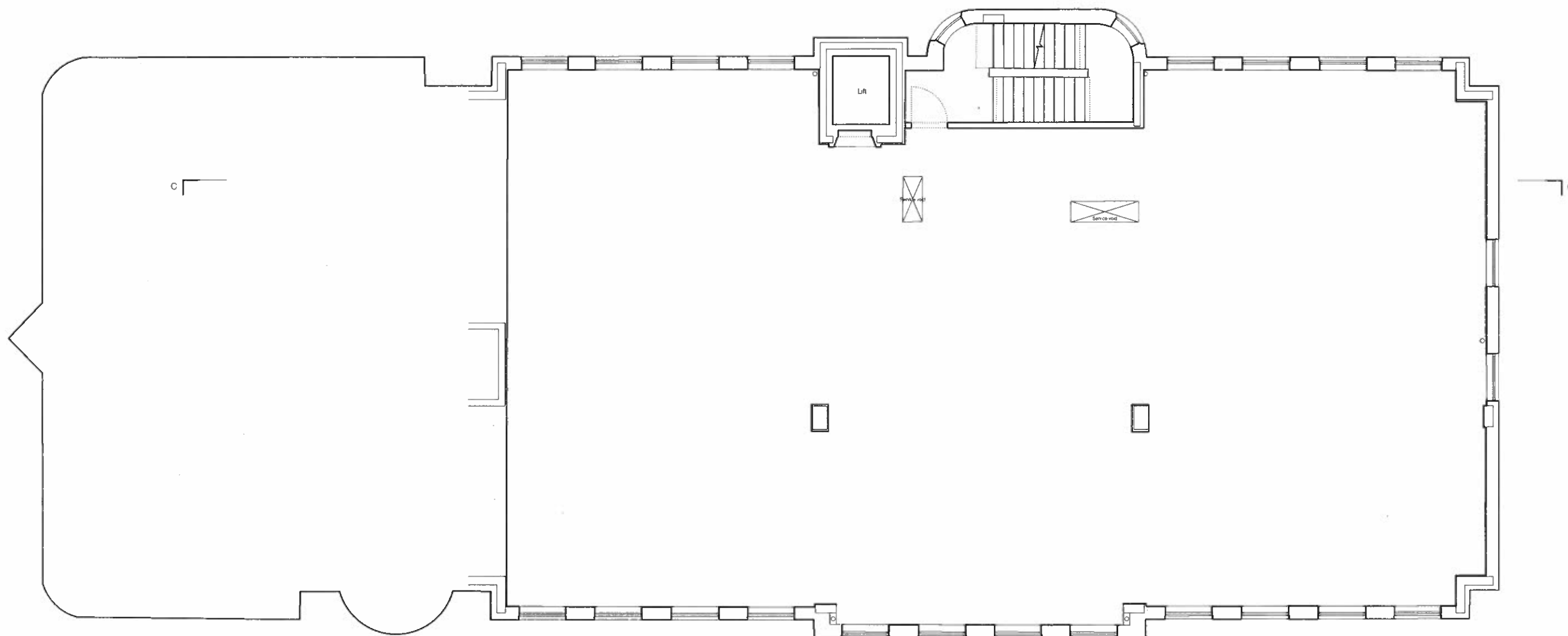
Revisions

180 Albany Street

Drawing Name  
Existing Ground Floor Plan

Drawing Number  
L02/01\_P 1:100 @ A3

Drawing Status	Date	Revision
Planning	6.11.14	/



EMILY  
GREEVES  
ARCHITECTS

Emily Greeves Architects  
101-103 Heath Street  
London NW3 6SS  
[www.emilygreeves.com](http://www.emilygreeves.com)  
[mail@emilygreeves.com](mailto:mail@emilygreeves.com)  
+44 (0)7830 342388

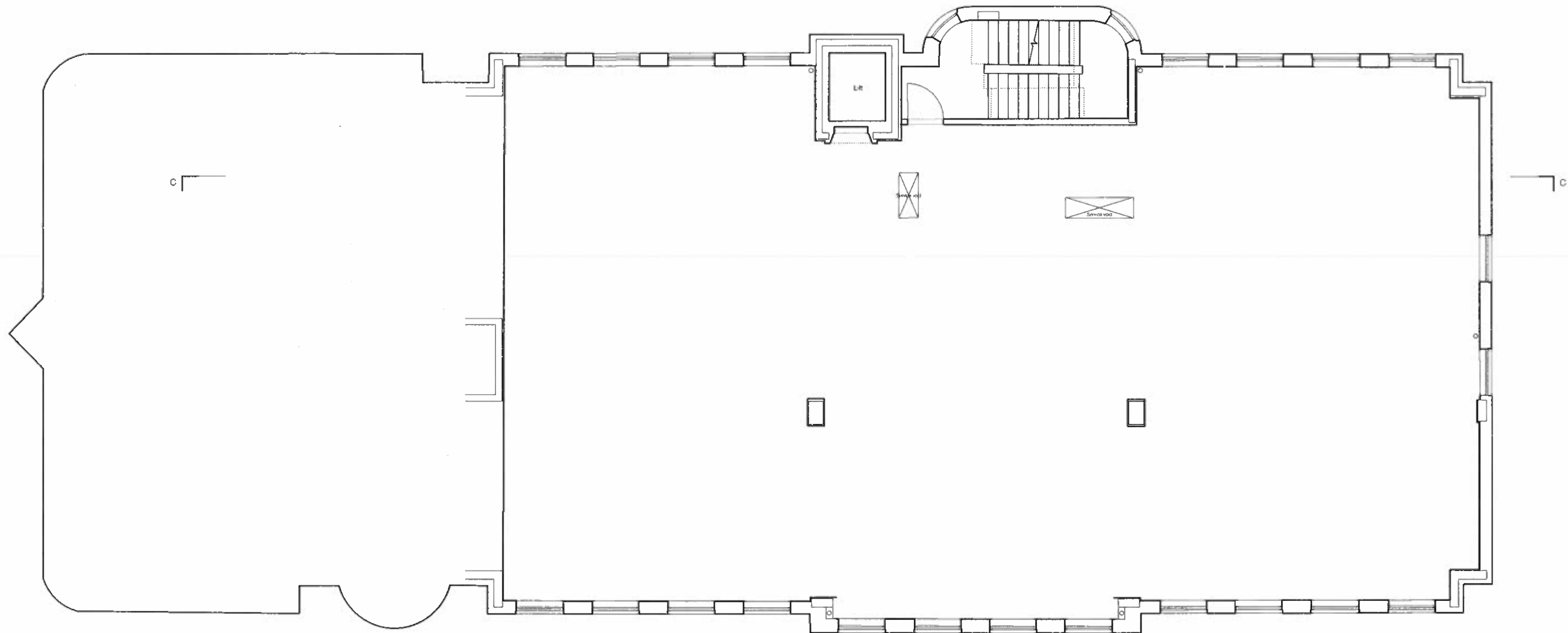
Please note:  
1. All dimensions to be checked on site before fabrication.  
2. Contractor to refer to engineer's drawings before construction.  
3. Samples to be provided by contractor for EGA approval.  
4. All finishes to EGA satisfaction.  
5. All drawings to be approved by EGA before construction.  
6. All drawings and designs are covered by Design Right (Intellectual Property) and may not be distributed, copied or issued without written permission of EGA.  
7. All design concepts are the sole property of EGA and no adaptations, reproductions or copies may be made without written permission of EGA.

Revisions

180 Albany Street

Drawing Name		
Existing First Floor Plan		
Drawing Number		
L02/02_P		1:100 @ A3
Drawing Status	Date	Revision
Planning	6.11.14	/

180 Albany Street



EMILY  
GREEVES  
ARCHITECTS

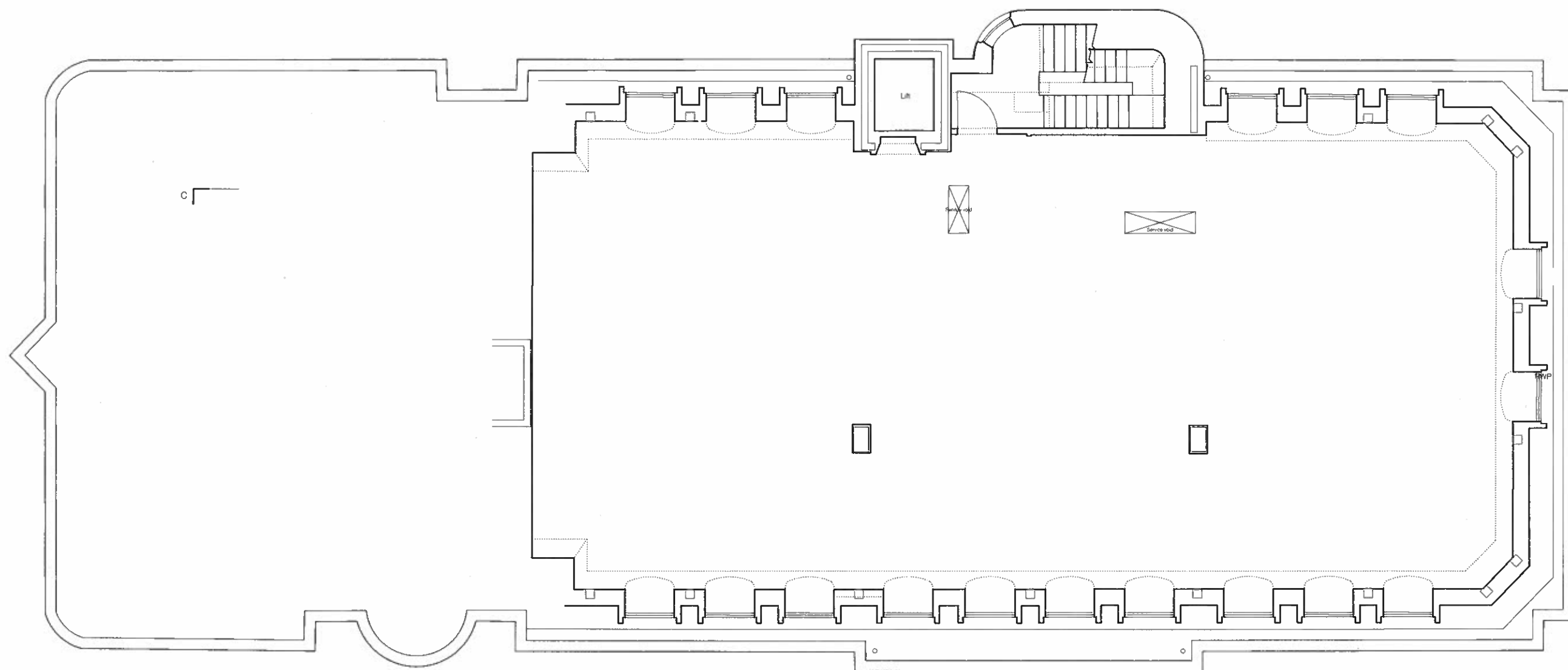
Emily Greeves Architects  
101-103 Heath Street  
London NW3 6SS  
[www.emilygreeves.com](http://www.emilygreeves.com)  
[mail@emilygreeves.com](mailto:mail@emilygreeves.com)  
+44 (0)7830 342388

Please note:  
1. All dimensions to be checked on site before fabrication.  
2. Contractor to refer to engineer's drawings before construction.  
3. Samples to be provided by contractor for EGA approval.  
4. All finishes to EGA satisfaction.  
5. All drawings to be approved by EGA before construction.  
6. All drawings and designs are covered by Design Right (Intellectual Property) and may not be distributed, copied or issued without written permission of EGA.  
7. All design concepts are the sole property of EGA and no adaptations, reproductions or copies may be made without written permission of EGA.

Revisions

180 Albany Street

Drawing Name		
Existing Second Floor Plan		
Drawing Number		1:100 @ A3
L02/03_P		
Drawing Status	Date	Revision
Planning	6.11.14	/



EMILY  
GREEVES  
ARCHITECTS

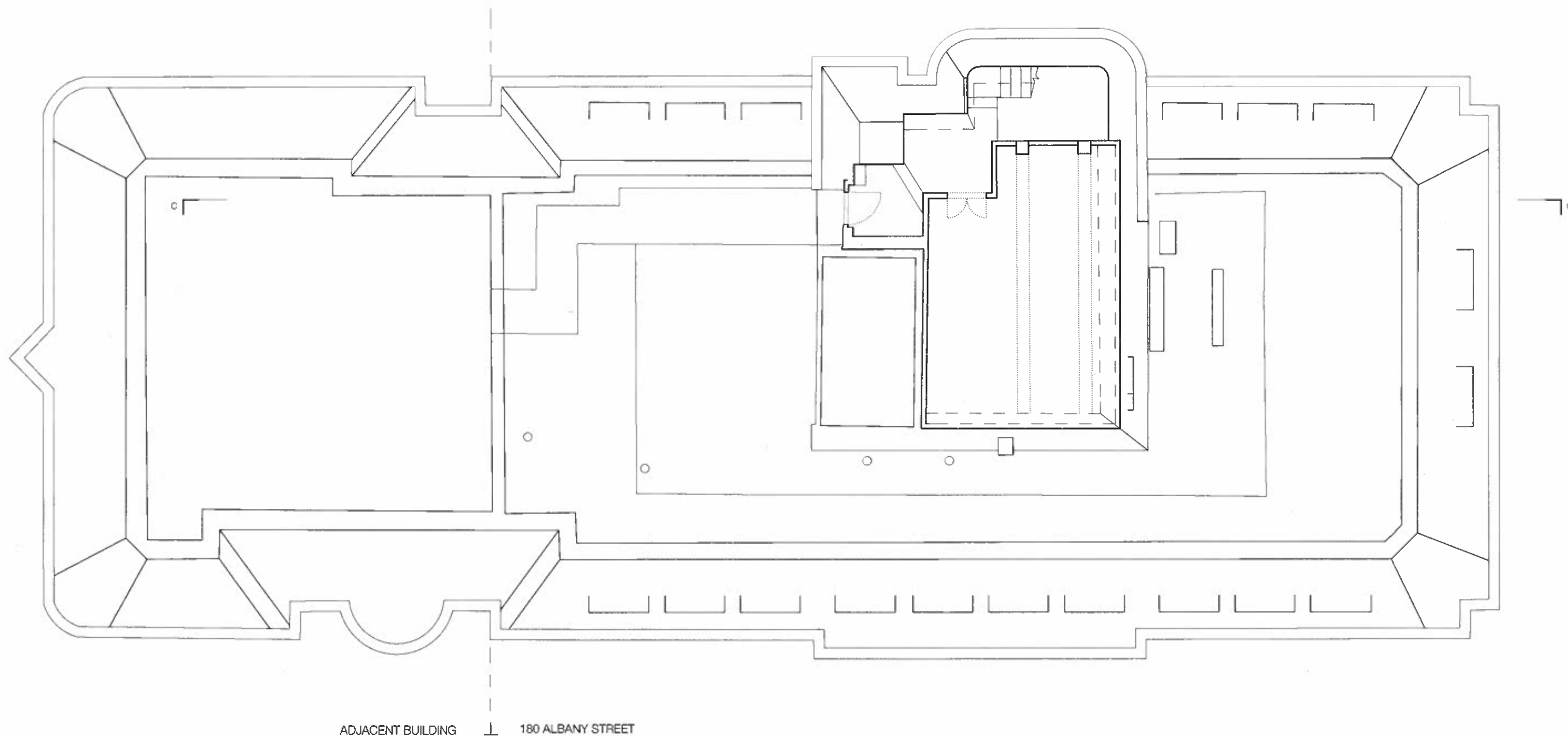
Emily Greeves Architects  
101-103 Heath Street  
London NW3 6SS  
[www.emilygreeves.com](http://www.emilygreeves.com)  
[mail@emilygreeves.com](mailto:mail@emilygreeves.com)  
+44 (0)7830 342388

Please note:  
1. All dimensions to be checked on site before fabrication.  
2. Contractor to refer to engineer's drawings before construction.  
3. Samples to be provided by contractor for EGA approval.  
4. All finishes to EGA satisfaction.  
5. All drawings to be approved by EGA before construction.  
6. All drawings and designs are covered by Design Right (Intellectual Property) and may not be distributed, copied or issued without written permission of EGA.  
7. All design concepts are the sole property of EGA and no adaptations, reproductions or copies may be made without written permission of EGA.

Revisions

180 Albany Street

Drawing Name		
Existing Third Floor Plan		
Drawing Number		
L02/04_P	1:100 @ A3	
Drawing Status		
Planning	Date	Revision
	6.11.14	/



EMILY  
GREEVES  
ARCHITECTS

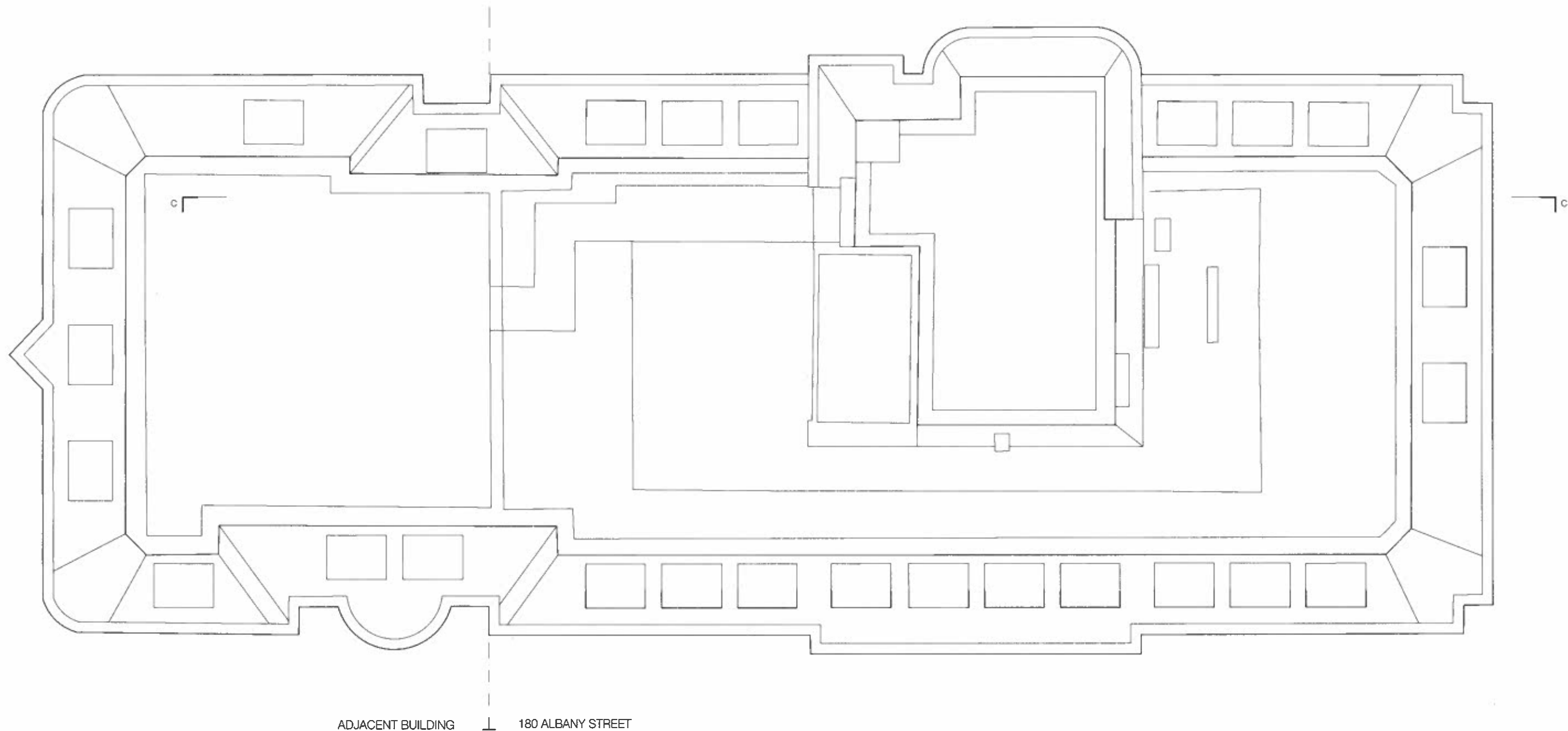
Emily Greeves Architects  
101-103 Heath Street  
London NW3 6SS  
[www.emilygreeves.com](http://www.emilygreeves.com)  
[mail@emilygreeves.com](mailto:mail@emilygreeves.com)  
+44 (0)7830 342388

Please note:  
1. All dimensions to be checked on site before fabrication.  
2. Contractor to refer to engineer's drawings before construction.  
3. Samples to be provided by contractor for EGA approval.  
4. All finishes to EGA satisfaction.  
5. All drawings to be approved by EGA before construction.  
6. All drawings and designs are covered by Design Right (Intellectual Property) and may not be distributed, copied or issued without written permission of EGA.  
7. All design concepts are the sole property of EGA and no adaptations, reproductions or copies may be made without written permission of EGA.

Revisions

180 Albany Street

Drawing Name		
Existing Roof Plan Level 1		
Drawing Number		
L02/05_P	1:100 @ A3	
Drawing Status		
Planning	Date	Revision
	6.11.14	/



EMILY  
GREEVES  
ARCHITECTS

Emily Greeves Architects  
101-103 Heath Street  
London NW3 6SS  
  
www.emilygreeves.com  
mail@emilygreeves.com  
+44 (0)7830 342388

Please note:  
1. All dimensions to be checked on site before fabrication.  
2. Contractor to refer to engineer's drawings before construction.  
3. Samples to be provided by contractor for EGA approval.  
4. All finishes to EGA satisfaction.  
5. All drawings to be approved by EGA before construction.  
6. All drawings and designs are covered by Design Right (Intellectual Property) and may not be distributed, copied or issued without written permission of EGA.  
7. All design concepts are the sole property of EGA and no adaptations, reproductions or copies may be made without written permission of EGA.

Revisions

180 Albany Street

Drawing Name		
Existing Roof Plan Level 2		
Drawing Number		
L2/06_P	1:100 @ A3	
Drawing Status	Date	Revision
Planning	6.11.14	/