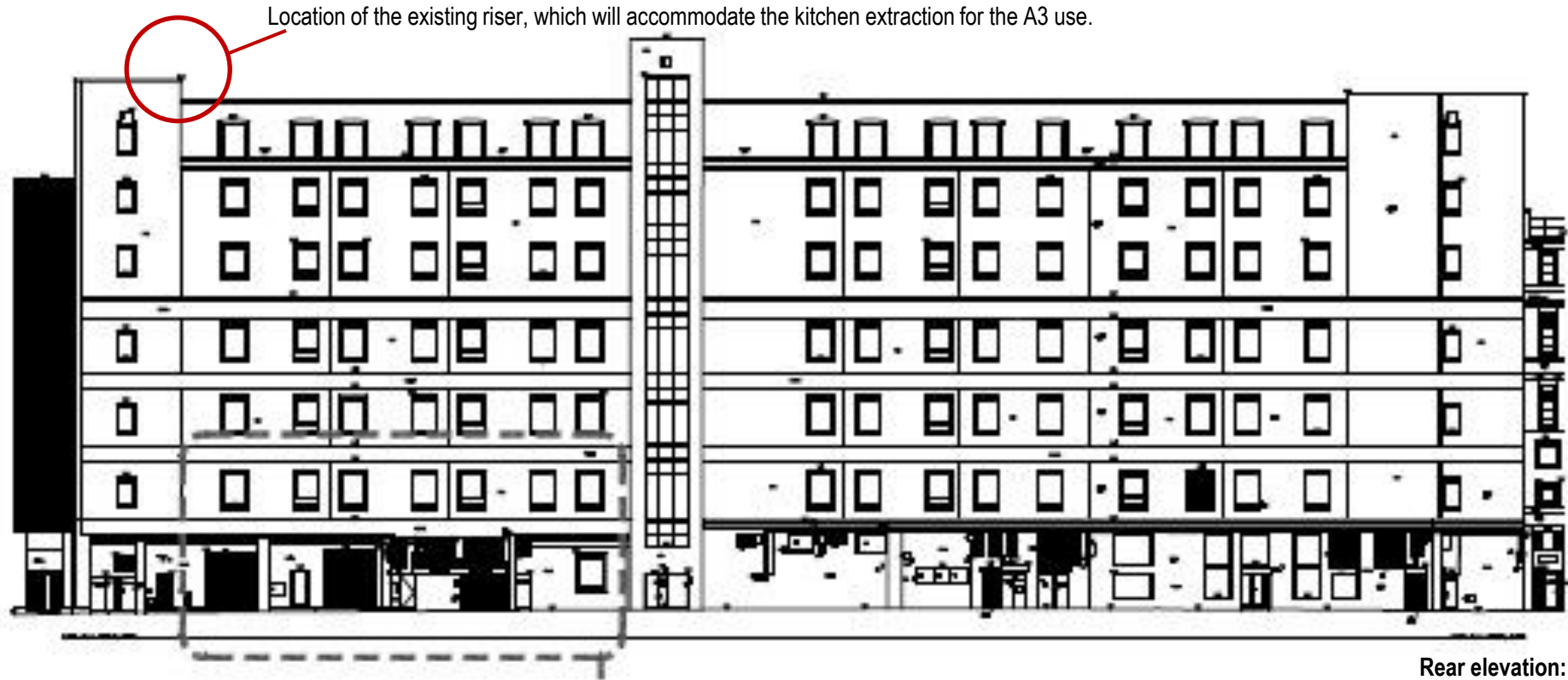
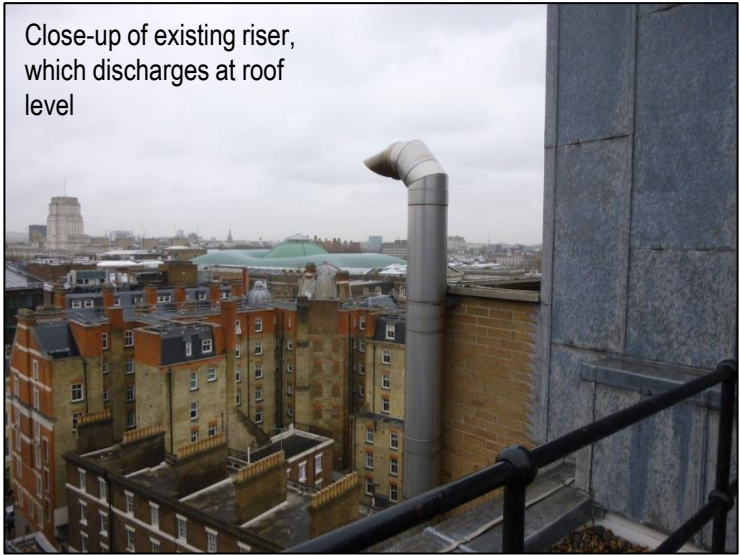
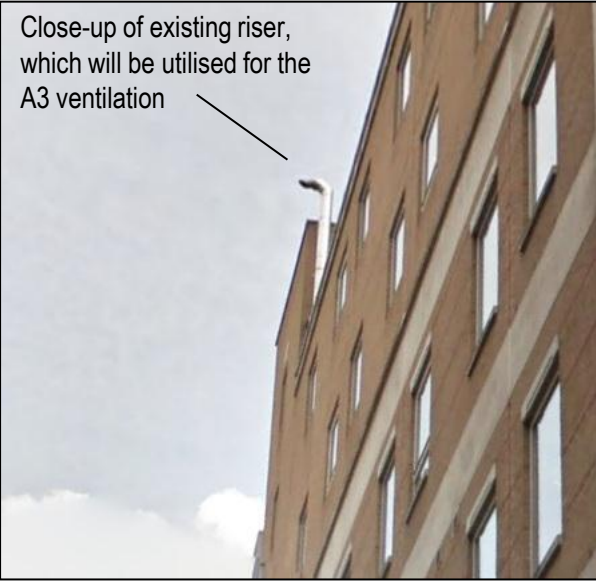
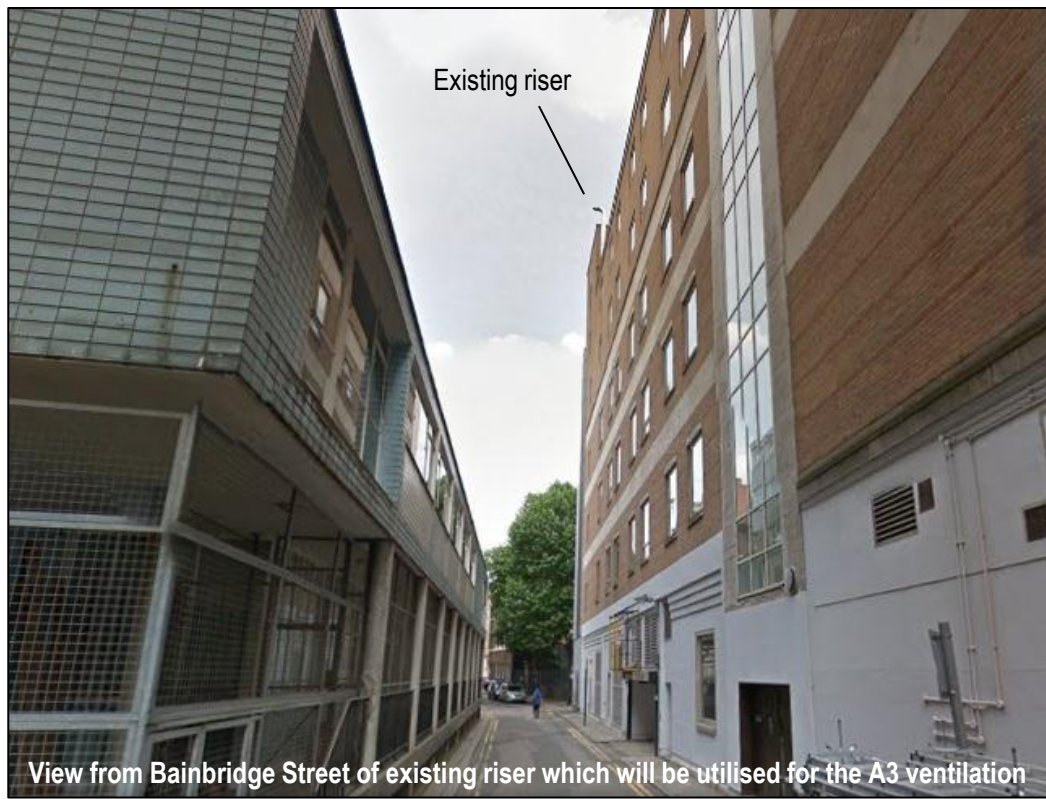


Details of ventilation arrangements for the A3 use

The existing riser will accommodate the kitchen extract. No physical alterations will be made to the existing arrangements. The riser runs internally through the building until the 6th floor where the duct is fixed to the staircase wall, discharging above roof level. Cleanout doors will be installed internally at each floor, and provision made with tenants to enable the A3 occupier access for maintenance.



Rear elevation: Bainbridge Street