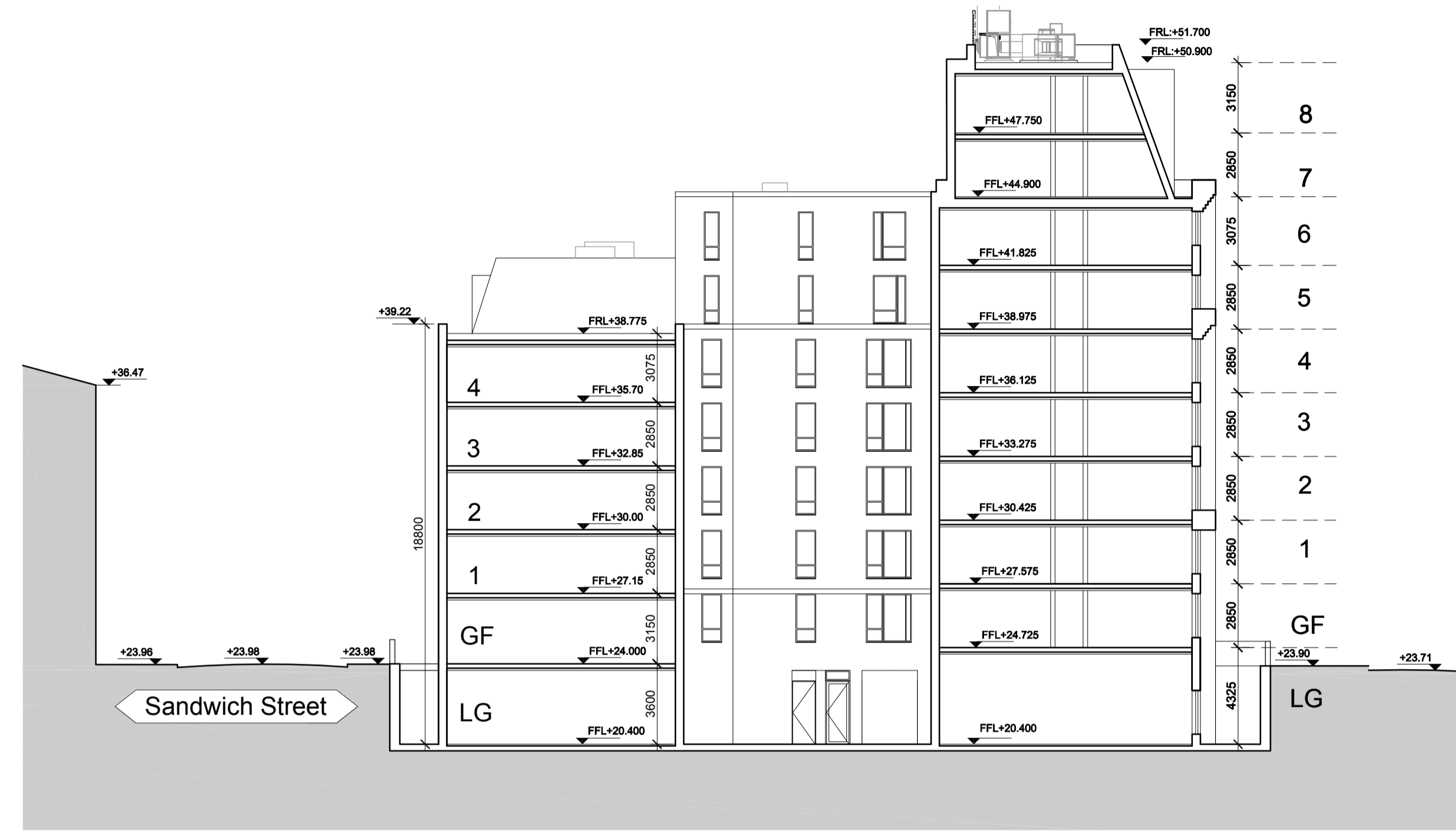


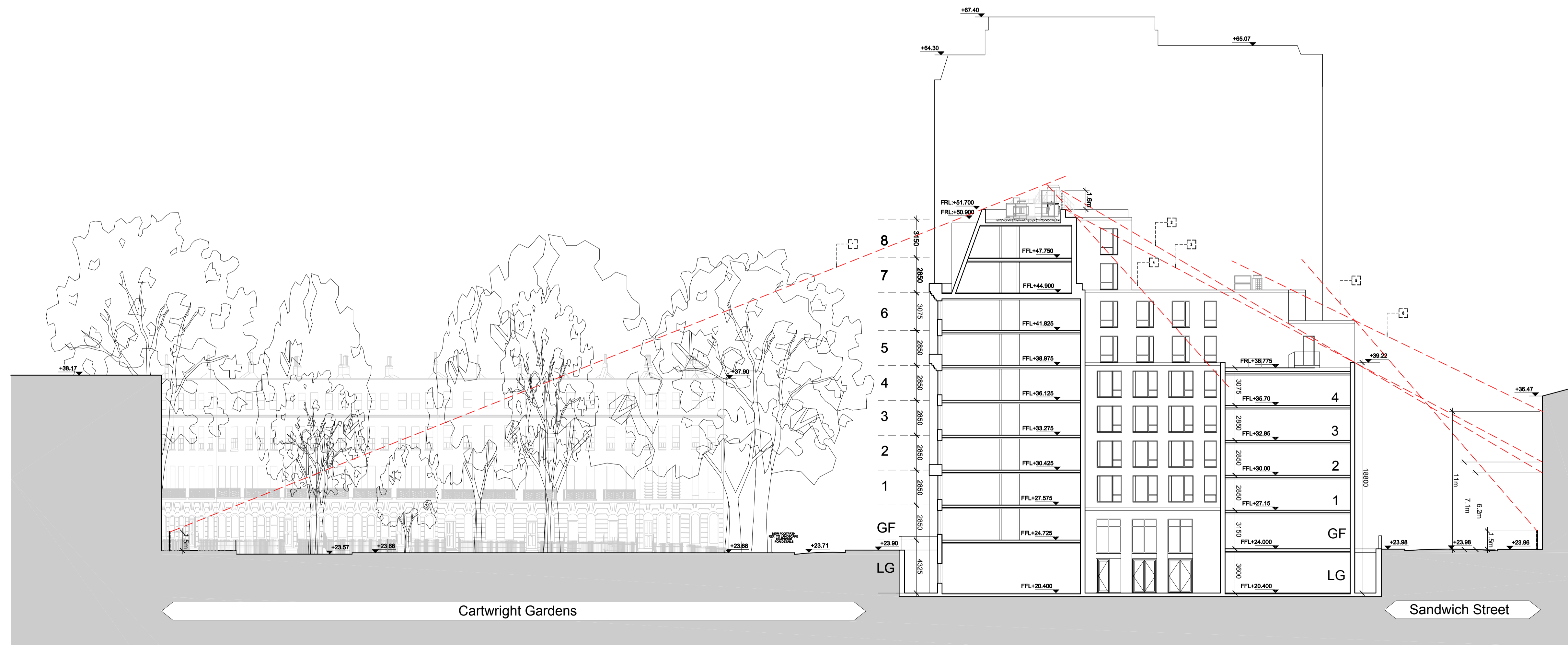
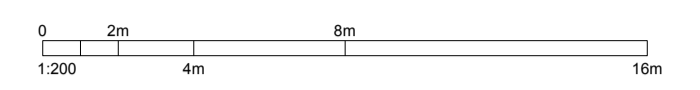
KEY PLAN

- Sight Lines Descriptions**
1. From standing eye level on the western side of Cartwright Gardens (adj Burton Place)
 2. Projection from the top of screening over the Townhouse roof indicating sight line level at eastern side of Sandwich Street
 3. Projection from the Cartwright Gardens wing rear parapet over the Townhouse roof indicating sight line level at eastern side of Sandwich Street
 4. Sightline from the west facing student bedrooms towards the HL screening
 5. Sightline from standing eye level from the western side of Sandwich Street over the 5th floor parapet
 6. Projected sightline from the roof top plant over the 5th floor parapet showing the sightline level from the eastern side of Sandwich Street



SECTION CC

NOTES:
DO NOT SCALE. FIGURED DIMENSIONS ONLY TO BE TAKEN FROM THIS DRAWING. CHECK DIMENSIONS ON SITE AND REPORT DISCREPANCIES TO THE ARCHITECT.
THIS DRAWING IS PROTECTED BY COPYRIGHT.
ALL AREAS HAVE BEEN MEASURED FROM CURRENT DRAWINGS. THEY MAY VARY BECAUSE OF (EG) SURVEY, DESIGN DEVELOPMENT, CONSTRUCTION TOLERANCES, STATUTORY REQUIREMENTS OR RE-DEFINITION OF THE AREAS TO BE MEASURED.



SECTION DD

No.	Date	Comment	Drawn	Chk'd
P6	17.10.14	Roof plant and sightlines added	RM	AR
P5	27.03.24	revision tags and change log added	RCR	RM
P4	26.03.14	REGULARIZATION ISSUE - refer to change log	RCR	NM
P3	06.06.13	OVERLOOKING WINDOWS AMENDED	SM	NM
P2	10.04.13	REVISED IN LINE WITH CASE OFFICER COMMENTS	SM	NM
P1	15.03.13	FOR PLANNING	SM	NM

Issue Status
PLANNING

tp bennett
architecture
interiors
planning

One America Street London SE1 0NE UK +44 (0) 20 7208 2000 www.tpbenntt.com
London Moscow Abu Dhabi New York

Project
Proposed
University of London
Cartwright Gardens, London

Drawing Title
Proposed Sections
Sections CC DD

Drawn	Date	Scale @ A1/A3	Alt. Ref.
SM	09.11.12	1:200/1:400	--

tp bennett Project No.	Drawing Number	Rev
A10417	D 0310	P6