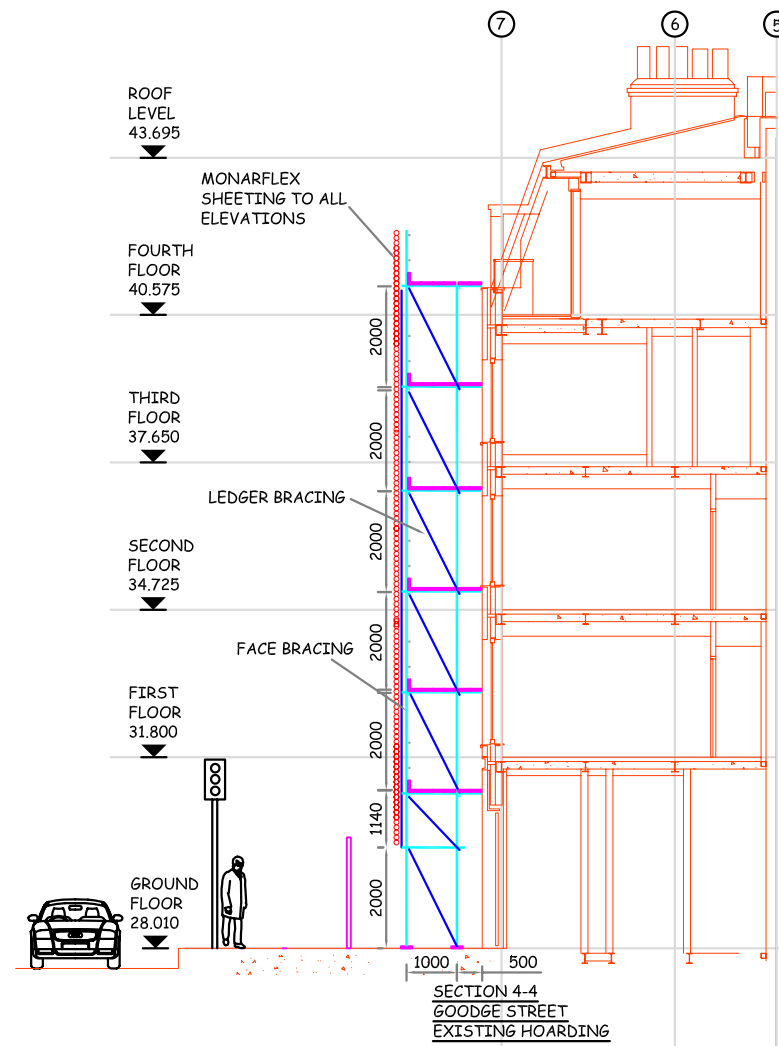
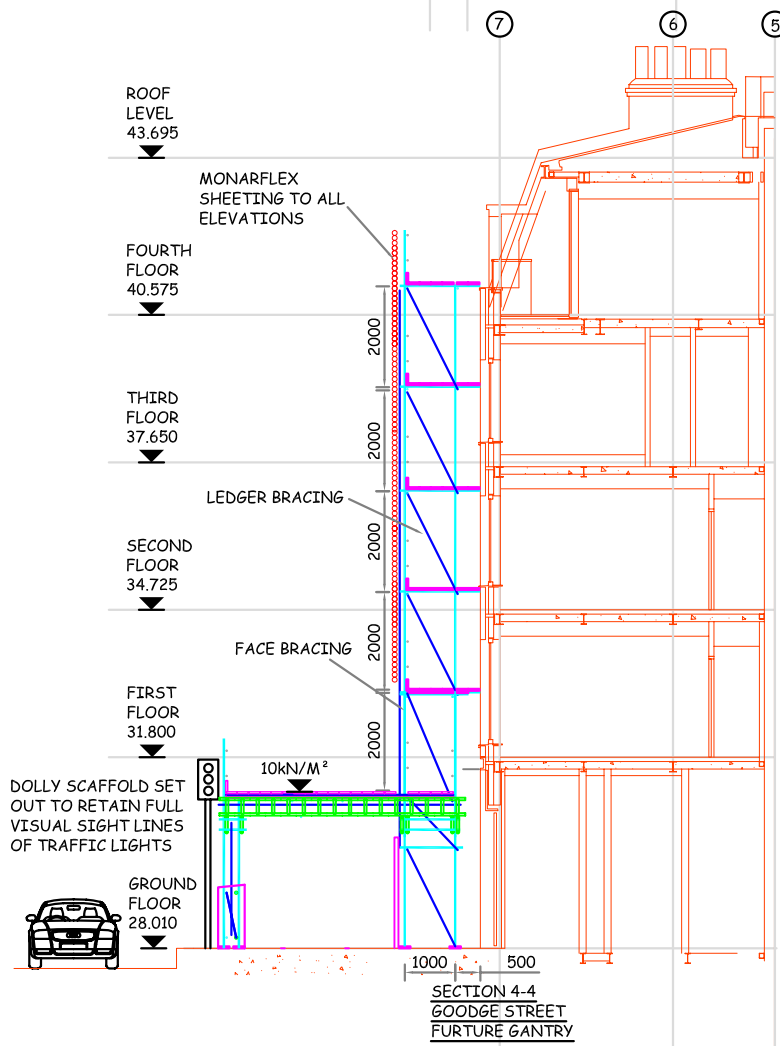
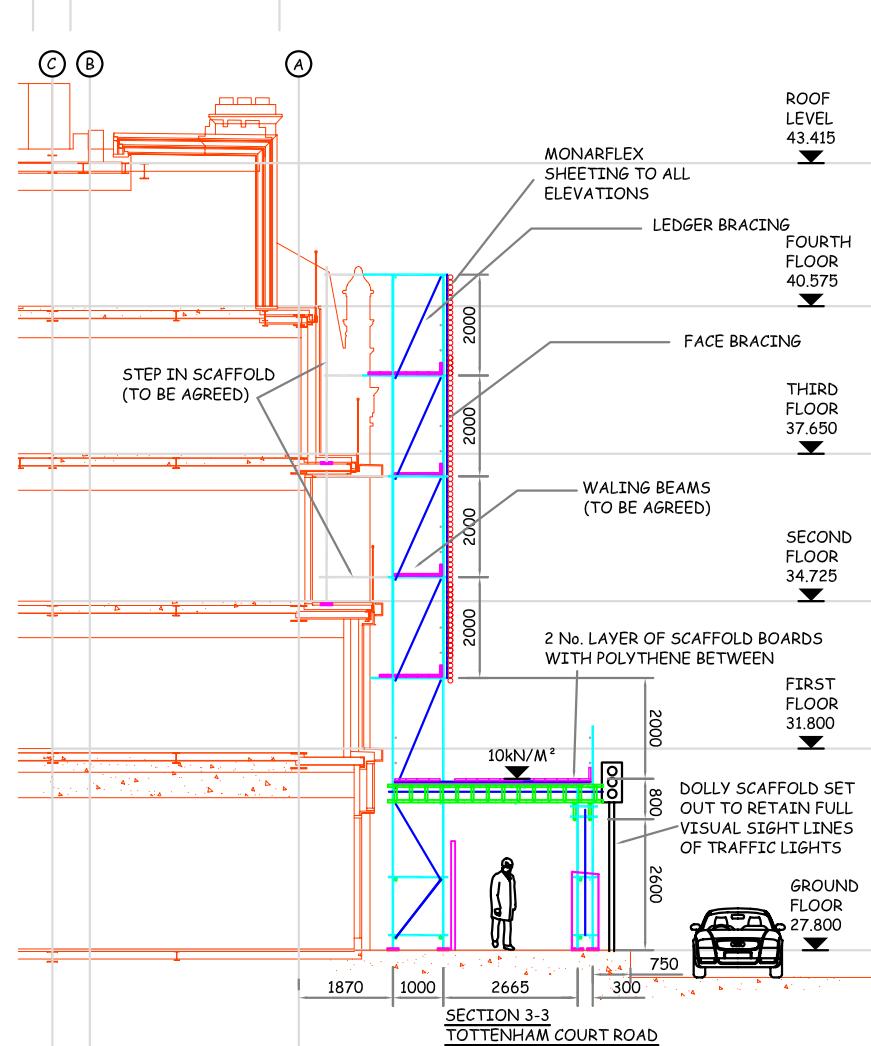
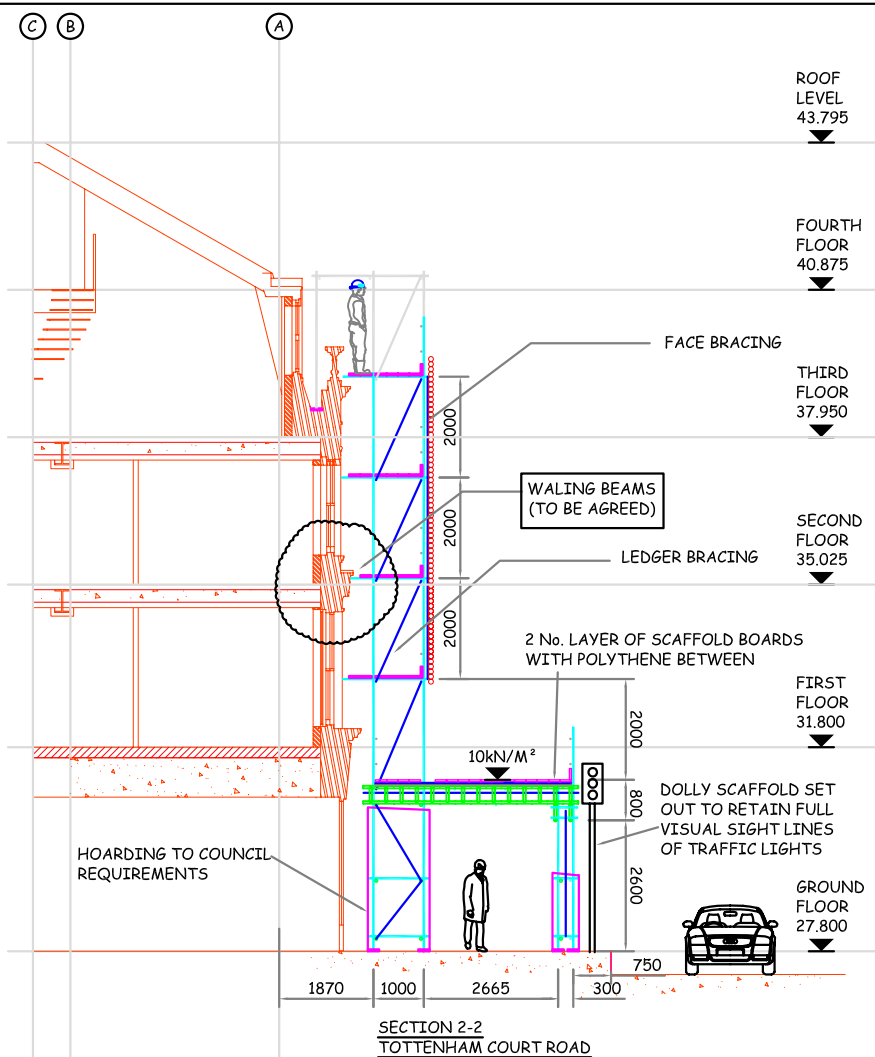


TIES TO BE AGREED



ALL SETTING OUT OF SCAFFOLD BY SITE ENGINEER

- GENERAL NOTES**
- This drawing is confidential and the exclusive property of ERNEST PARK
 - It must not be used except under a contract with ERNEST PARK relating to the job in connection with which the drawing was issued.
 - Components manufactured in accordance with the drawing must not be used for any purpose other than the intention of the drawing.
 - It must not be copied or exhibited without written permission of ERNEST PARK
 - Scaffold built with load bearing fittings, except intermediate bearers below platform level and boards fixed with non-load bearing fittings.
 - All services, plant, equipment and materials supplied are subject to our conditions of Contract, Hire or Sale as applicable.
 - This drawing has been prepared from details supplied to us by the enquirer/client, who should check that we have correctly interpreted his requirements and that all loadings, dimensions, details, erection and striking sequences are correct and practicable. No alteration in the loading may be made without prior reference to ERNEST PARK
 - Should additional materials be added to this scheme at the request or instruction of the customers main Contractor, Architect, Engineer, Consultant or local authorities then an additional charge for the same will be made
 - CODES AND SPECIFICATIONS**
General scaffold specifications to TG 20:13
General material specifications to EN 39:2001, BS EN 12811-1.
 - The customer is to ensure that the ground and/or base provided for our scaffold is adequate to support the loads to be applied without settlement and must provide any necessary spreaders.
 - If foundation levels are indicated on this drawing, the customer must set out and strictly adhere to the same.
 - Where equipment is supported or suspended from an existing structure, (e.g. roofs, beams, balconies, upper floors etc.) the customer must ensure that the structure is of adequate strength to safely support the additional imposed loads.
 - SCAFFOLDING DIMENSIONS AND LOADING:-**
Lift heights not to exceed u.n.o.
Bay lengths not to exceed u.n.o.
Platform loading not to exceed Kn/m²
Scaffold designed for no. simultaneously working lifts.
Also no. of additional boarded lifts.
Maximum calculated leg load Kn.
Wind loadings where applicable have been calculated in accordance with BS 6399: PART 2.
Maximum wind pressure allowed in the design shown on this drawing is:- Kn/m²
Main contractor's attention is drawn to the fact that the loading in this scheme is axial to the tubes or is otherwise specially provided for and that no eccentric loads are applied to the structure without specific reference to ERNEST PARK
 - It is the responsibility of the client/enquirer to ensure that adequate facilities for tying the scaffold are made available and that the building or structure is capable of withstanding the loads applied to it by the scaffold and its working load.
 - Spacing of ties not to exceed horizontally and vertically.
 - Anchorage for ties to be provided by client at points shown * on the drawing and should preferably be of the cast in or drilled in socket type.
 - All ties must be secured with right angle couplers and to the standards whenever possible.
 - All dimensions are as stated or as calculated. Drawings must not be scaled.

Special Notes :

DRAWINGS IN THIS SERIES :

FOR COMMENTS

REV.	DESCRIPTION	CHANGED	CHECKED	DATE

ERNEST PARK
70 ST MARY AXE
LONDON
EC3A 8BE

TITLE
PROPOSED SECTIONS FOR PAVEMENT GANTRY 62-63 TOTTENHAM COURT ROAD

CLIENT

THIS DRAWING HAS BEEN PRODUCED BY
CONTRACT DESIGN SERVICE
88 - 71 HIGH STREET,
EPSOM,
SURREY,
KT19 8DH
TEL: 01372 745217 FAX: 01372 740701 e-mail: enquiries@contract-design.co.uk

DRAWN BY	CHECKED BY	APPROVED BY
CDS	14.08.14	CCS

SCALE 1:75 DRAWING No. EP/7076/02 REV.