



EXAMPLES of BUILT-UP STAINLESS STEEL LETTERS

Font: Neutra Display Bold (bold)

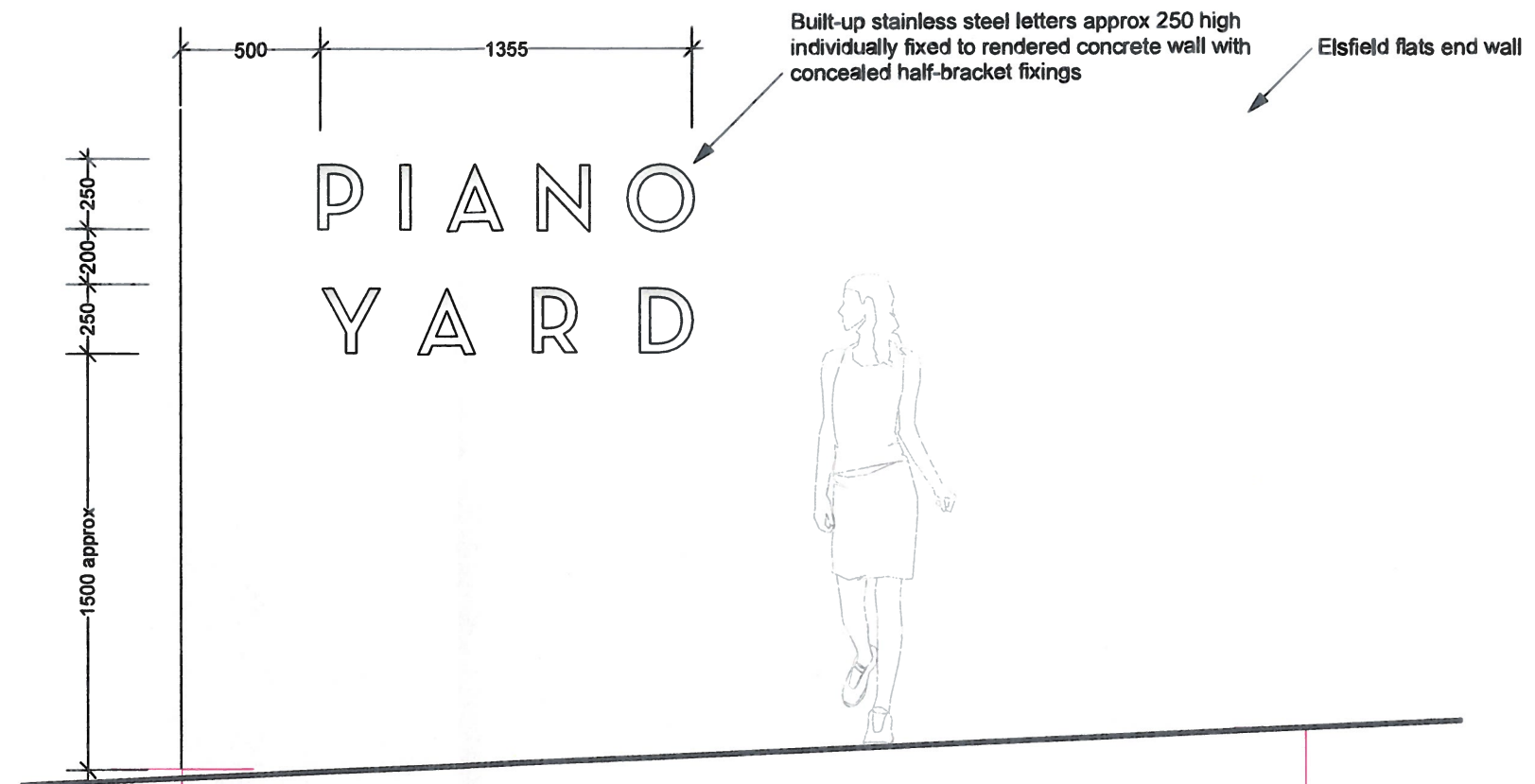
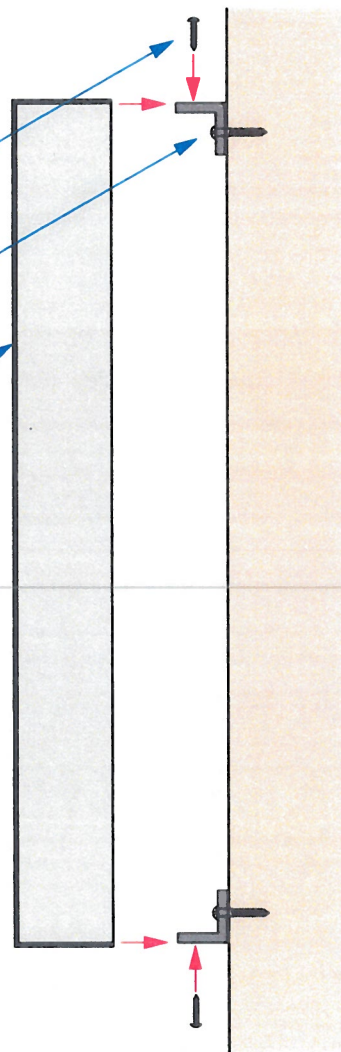
Sidewall machine screw to secure the letter to the half-bracket angle fixing

Half-bracket fixing screwed to wall

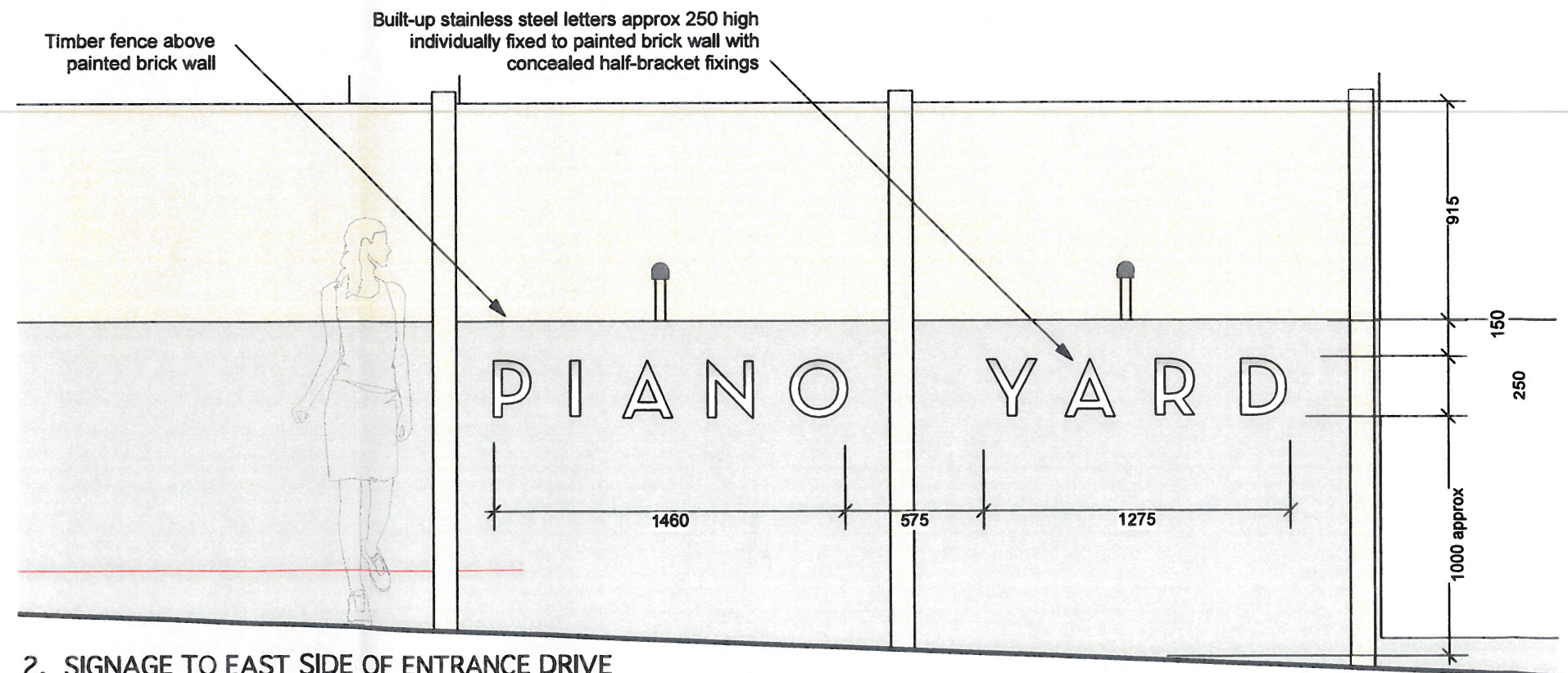
Built-up stainless steel letters

NOTE: letters must be robust and vandal-resistant. Letters must be fixed tight to the wall, and fixings concealed. Anti-vandal screws may be required.

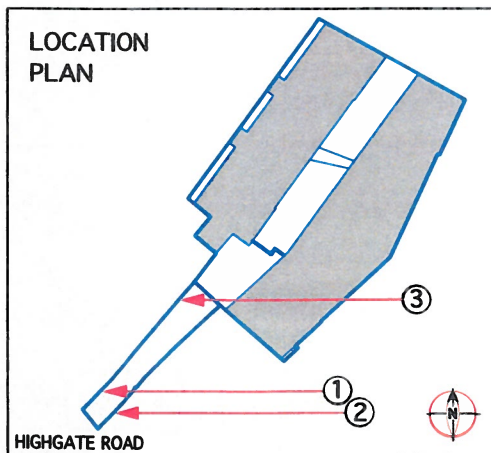
SECTION THROUGH LETTER SHOWING FIXINGS



1. SIGNAGE TO WEST SIDE OF ENTRANCE DRIVE



2. SIGNAGE TO EAST SIDE OF ENTRANCE DRIVE



CHASSAY
studio

108 Palace Gardens Terrace, London W8 4RT
t. 0207 243 1516 www.chassaystudio.com

General Notes

- 1) Do not scale from this drawing.
- 2) Written dimensions only to be used.
- 3) All dimensions are in millimetres.
- 4) These drawings shall be read in conjunction with all other relevant drawings, written instructions and specifications.
- 5) Any discrepancies or inconsistencies must be reported to the architect immediately.

© CHASSAY STUDIO Ltd 2012

Rev	By	Description of Change	Date	Checked
D	AS	for construction	04.07.14	TED
A	AS	First issue for costing	25.06.14	TED

30a HIGHGATE ROAD
30a Highgate Road, London NW5 1NS
for LONDON BUILDINGS (HIGHGATE) Ltd.

Title
SIGNAGE 1 - AT THE STREET

Job Code	Drawing No.	Revision	status : FOR
	1102 -F-60 d		construction
Date	Scale		
25.06.2014	1:50 & 1:100 @ A3		