

New End Theatre

Proposed Building

Carnegie House



Roof Level

Fifth Floor

Fourth Floor

Third Floor

Second Floor

First Floor

Ground Floor +0.000

Lower Ground Floor -3.400

General notes:

This drawing is copyright of KSR architects. This drawing must be read in conjunction with the designer's risk assessment, specification and all other relevant documentation and drawings. KSR architects accept no liability for any expense, loss or damage of whatsoever nature and however arising from any variation made to this drawing or in the execution of the work to which it relates which has not been referred to them and their approval obtained.
Do not scale from this drawing or the digital data, only figured dimensions are to be used. For Planning refer to linear scale.
Check all dimensions on site.

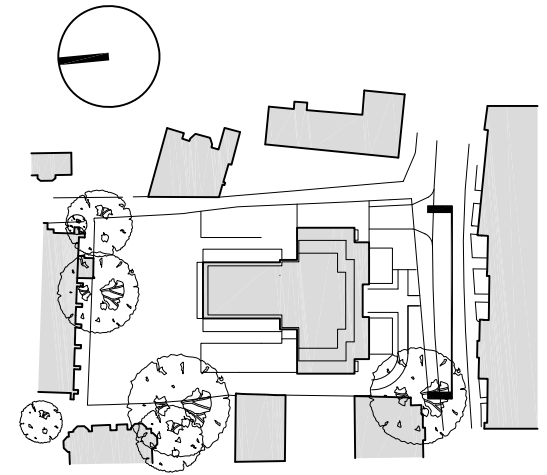
Legend

External Materials Schedule

- (A) Brickwork
- (B) Natural Slates
- (C) Stone Coping
- (D) Stone Surround
- (E) Projecting Stone Faced Balcony
- (F) Projecting Bronze Framed Surround
- (G) PPC Aluminium Glazing
- (H) PPC Metal Balustrade with Timber handrail
- (I) Metal Balustrade
- (J) PPC Protecting Louvered Sunscreen

E	PLANNING	21.05.12	LV	GU
D	ISSUED FOR PLANNING	24.04.12	LV	GU
C	ISSUED FOR INFORMATION	24.02.12	LV	GU
B	ISSUED FOR INFORMATION	03.02.12	LV	GU
A	ISSUED FOR PLANNING	30.06.11	ARB	GU
Rev	Notes	05.11.11	By	Chd

© KSR architects



KSR
architects

KSR architects
14 Greenland Street
London
NW1 2ND

t: + 44 (0)20 7692 5000
f: + 44 (0)20 7692 5250
www.ksr-architects.com

Project:
**29 New End
Hampstead
London NW3**

Title:
**PROPOSED
Building Elevations
South Elevation (New End)**

Date: 20.11.09 Drawn By: ARB Checked: ,

Scale: 1:100 @ A1 / 1:200 @ A3

Project Ref:	Drawing No:	Revisions
NEN	NEN - PL - 300	E



New End

Proposed Building

Christ Church



Roof Level

Fifth Floor

Fourth Floor

Third Floor

Second Floor

First Floor

Ground Floor +0.000

Lower Ground Floor -3.400

General notes:

This drawing is copyright of KSR architects. This drawing must be read in conjunction with the designer's risk assessment, specification and all other relevant documentation and drawings. KSR architects accept no liability for any expense, loss or damage of whatsoever nature and however arising from any variation made to this drawing or in the execution of the work to which it relates which has not been referred to them and their approval obtained.
Do not scale from this drawing or the digital data, only figured dimensions are to be used. For Planning refer to linear scale.
Check all dimensions on site.

Legend

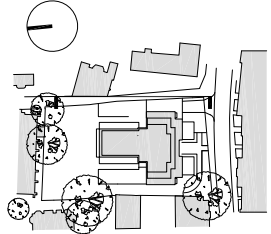
External Materials Schedule

- (A) Brickwork
- (B) Natural Slates
- (C) Stone Coping
- (D) Stone Surround
- (E) Projecting Stone Faced Balcony
- (F) Projecting Bronze Framed Surround
- (G) PPC Aluminium Glazing
- (H) PPC Metal Balustrade with Timber handrail
- (I) Metal Balustrade
- (J) PPC Protecting Louvered Sunscreen

D	Terrace access restricted	27.08.12	LV	GU
F	PLANNING	27.05.12	LV	GU
E	ISSUED FOR PLANNING	24.04.12	LV	GU
D	Terraces facing Christ Church Cottage	02.04.12	LV	GU
C	ISSUED FOR INFORMATION	24.02.12	LV	GU
B	ISSUED FOR INFORMATION	03.02.12	LV	GU
A	ISSUED FOR PLANNING	30.05.11	APB	GU

Rev Notes 05/11/12 By Chid

© KSR architects



KSR
architects

KSR architects
14 Greenland Street
London
NW1 0ND
t: +44 (0)20 7692 5000
f: +44 (0)20 7692 5050
www.ksr-architects.com

Project:
**29 New End
Hampstead
London NW3**

Title:
**PROPOSED
Building Elevations
East Elevation (Christ Ch. Passage)**

Date: 20.11.09 Drawn By: APB Checked: .

Scale: 1:100 @ A1 / 1:200 @ A3

Project Ref: NEN Drawing No: NEN - PL - 310 Revision: G



Christ Church Cottage

Proposed Building

Lawn House



General notes:

This drawing is copyright of KSR architects. This drawing must be read in conjunction with the designer's risk assessment, specification and all other relevant documentation and drawings. KSR architects accept no liability for any expense, loss or damage of whatsoever nature and however arising from any variation made to this drawing or in the execution of the work to which it relates which has not been referred to them and their approval obtained.
Do not scale from this drawing or the digital data, only figured dimensions are to be used. For Planning refer to linear scale.
Check all dimensions on site.

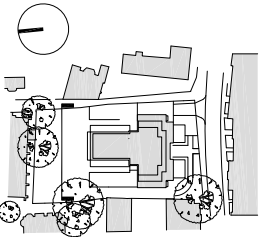
Legend

External Materials Schedule

- (A) Brickwork
- (B) Natural Slates
- (C) Stone Coping
- (D) Stone Surround
- (E) Projecting Stone Faced Balcony
- (F) Projecting Bronze Framed Surround
- (G) PPC Aluminium Glazing
- (H) PPC Metal Balustrade with Timber handrail
- (I) Metal Balustrade
- (J) PPC Protecting Louvered Sunscreen

F	Terrace access realized	27.09.12	LV	GU
E	PLANNING	21.08.12	LV	GU
D	ISSUED FOR PLANNING	24.04.12	LV	GU
C	ISSUED FOR INFORMATION	24.02.12	LV	GU
B	ISSUED FOR INFORMATION	03.02.12	LV	GU
A	ISSUED FOR PLANNING	30.05.11	APB	GU
Rev	Notes	30.05.11	By	Chd

© KSR architects



KSR
architects

KSR architects
14 Greenland Street
London
NW1 0ND

t: + 44 (0)20 7692 5000
e: + 44 (0)20 7692 5050
www.ksr-architects.com

Project:
**29 New End
Hampstead
London NW3**

Title:
**PROPOSED
Building Elevations
North Elevation**

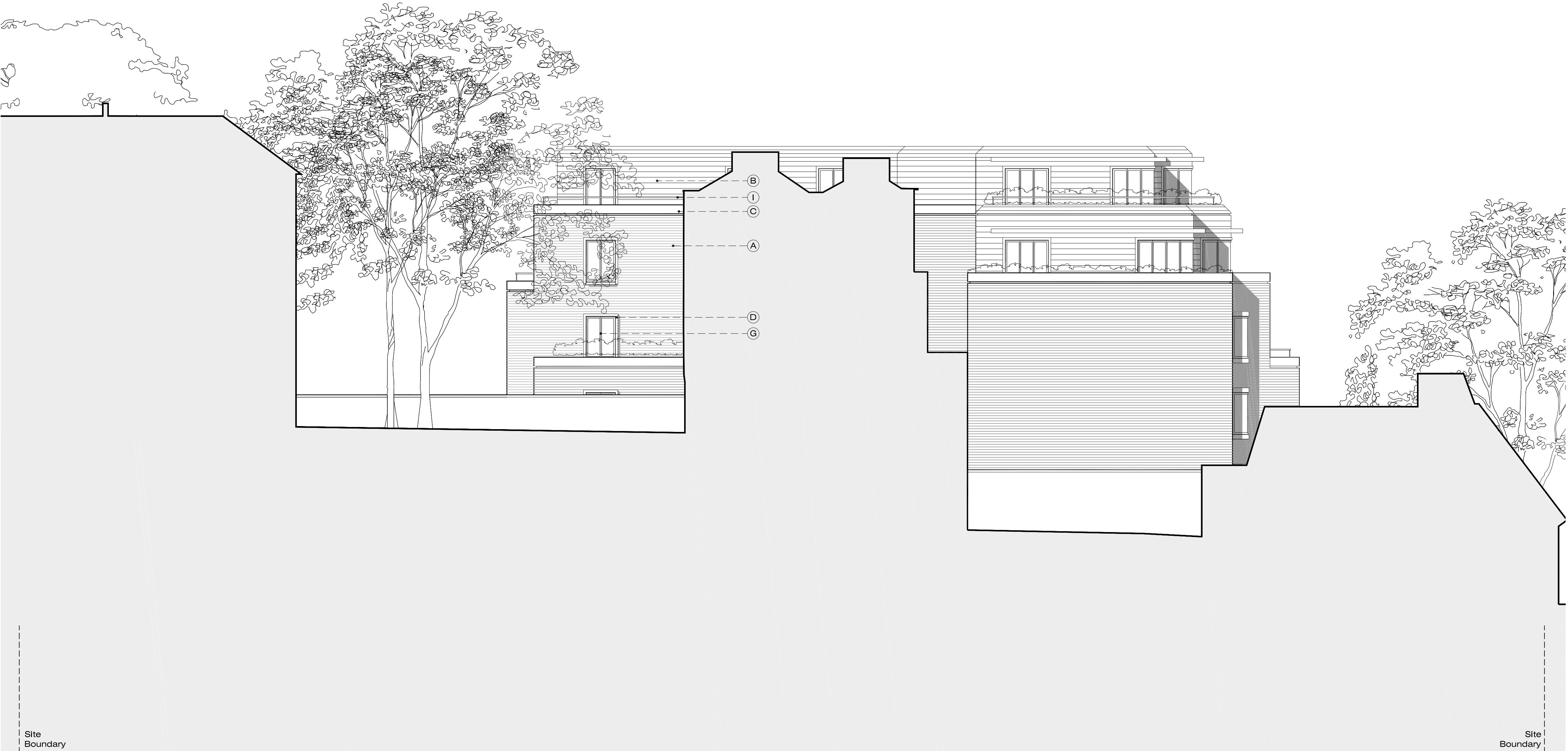
Date: 20.11.09 Drawn By: APB Checked: .

Scale: 1:100 @ A1 / 1:200 @ A3

Project Ref:	Drawing No:	Revision:
NEN	NEN - PL - 320	F



10 & 11 Hampstead Square Lawn House New End Theatre



Roof Level -----

Fifth Floor -----

Fourth Floor -----

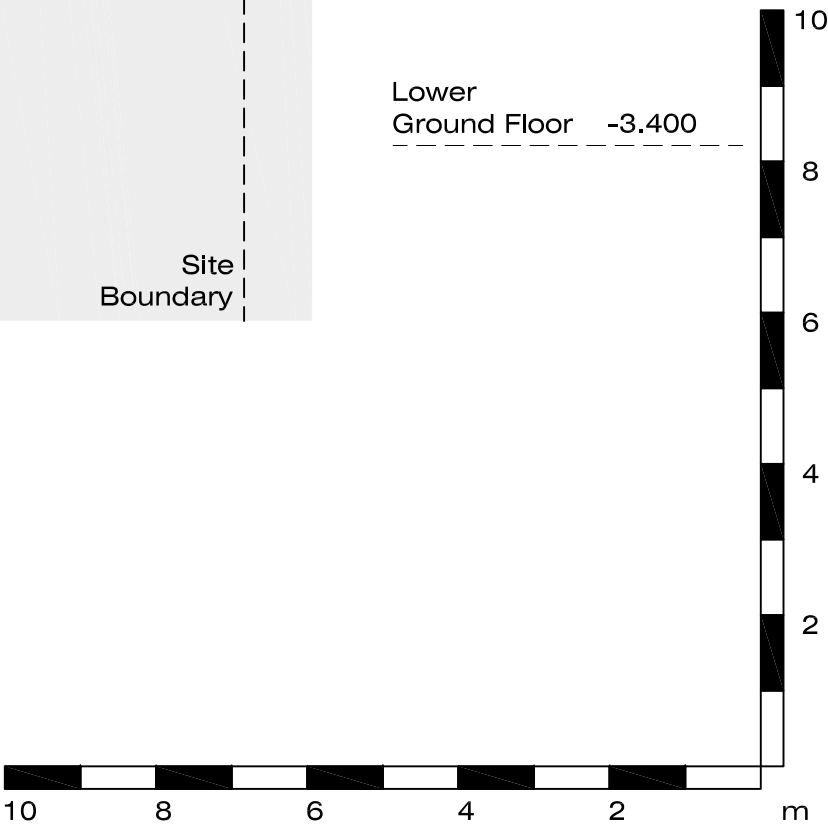
Third Floor -----

Second Floor -----

First Floor -----

Ground Floor +0.000 -----

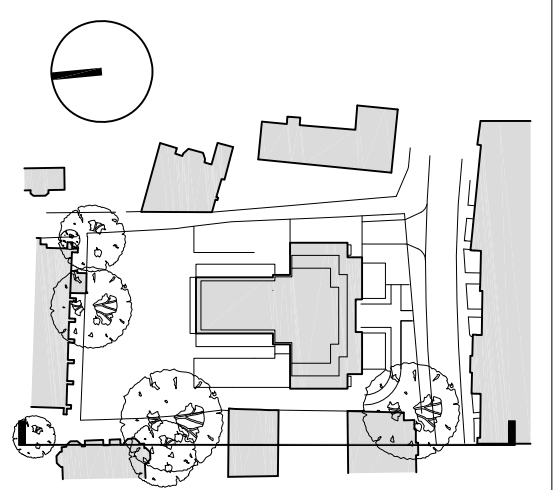
Lower Ground Floor -3.400 -----



- General notes:
- This drawing is copyright of KSR architects. This drawing must be read in conjunction with the designer's risk assessment, specification and all other relevant documentation and drawings. KSR architects accept no liability for any expense, loss or damage of whatsoever nature and however arising from any variation made to this drawing or in the execution of the work to which it relates which has not been referred to them and their approval obtained.
- Do not scale from this drawing or the digital data, only figured dimensions are to be used. For Planning refer to linear scale. Check all dimensions on site.
- Legend
- External Materials Schedule
- (A) Brickwork
 - (B) Natural Slates
 - (C) Stone Coping
 - (D) Stone Surround
 - (E) Projecting Stone Faced Balcony
 - (F) Projecting Bronze Framed Surround
 - (G) PPC Aluminium Glazing
 - (H) PPC Metal Balustrade with Timber handrail
 - (I) Metal Balustrade
 - (J) PPC Protecting Louvered Sunscreen

E	PLANNING	21.05.12	LV	GU
D	ISSUED FOR PLANNING	24.04.12	LV	GU
C	ISSUED FOR INFORMATION	24.02.12	LV	GU
A	ISSUED FOR INFORMATION	03.02.12	LV	GU
A	ISSUED FOR PLANNING	30.06.11	ARB	GU
Rev	Notes	05.11.11	By	Chkd

© KSR architects



KSR
architects

KSR architects
14 Greenland Street
London
NW1 2ND

t: + 44 (0)20 7692 5000
f: + 44 (0)20 7692 5050
www.ksr-architects.com

Project:
**29 New End
Hampstead
London NW3**

Title:
**PROPOSED
Building Elevations
West Elevation**

Date: 20.11.09 Drawn By: ARB Checked: ,

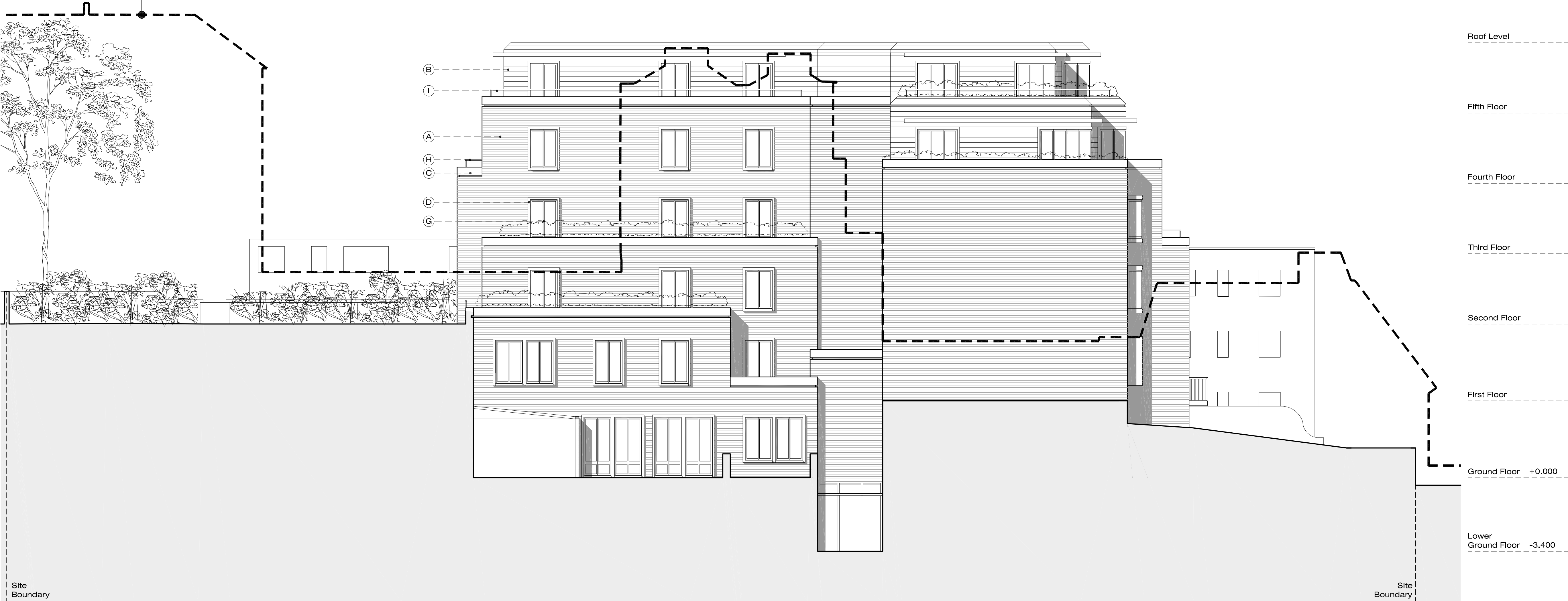
Scale: 1:100 @ A1 / 1:200 @ A3

Project Ref:	Drawing No:	Revisions
NEN	NEN - PL - 330	E



Christ Church Lawn House New End

Dashed line indicates the building outline of property to the West of the site



Roof Level

Fifth Floor

Fourth Floor

Third Floor

Second Floor

First Floor

Ground Floor +0.000

Lower Ground Floor -3.400

General notes:

This drawing is copyright of KSR architects. This drawing must be read in conjunction with the designer's risk assessment, specification and all other relevant documentation and drawings. KSR architects accept no liability for any expense, loss or damage of whatsoever nature and however arising from any variation made to this drawing or in the execution of the work to which it relates which has not been referred to them and their approval obtained.
Do not scale from this drawing or the digital data, only figured dimensions are to be used. For Planning refer to linear scale.
Check all dimensions on site.

Legend

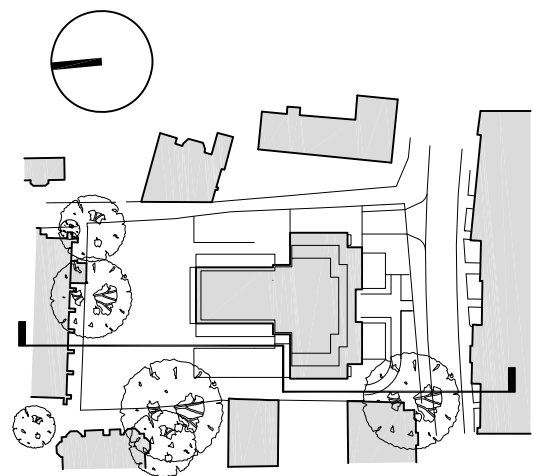
External Materials Schedule

- (A) Brickwork
- (B) Natural Slates
- (C) Stone Coping
- (D) Stone Surround
- (E) Projecting Stone Faced Balcony
- (F) Projecting Bronze Framed Surround
- (G) PPC Aluminium Glazing
- (H) PPC Metal Balustrade with Timber handrail
- (I) Metal Balustrade
- (J) PPC Protecting Louvered Sunscreen

E	PLANNING	21.05.12	LV	GU
D	ISSUED FOR PLANNING	24.04.12	LV	GU
C	ISSUED FOR INFORMATION	24.02.12	LV	GU
B	ISSUED FOR INFORMATION	03.02.12	LV	GU
A	ISSUED FOR PLANNING	30.06.11	ARB	GU

Rev Notes 05/11/11 By Chd

© KSR architects



KSR
architects

KSR architects
14 Greenland Street
London
NW1 2ND
t: + 44 (0)20 7692 5000
f: + 44 (0)20 7692 5050
www.ksr-architects.com

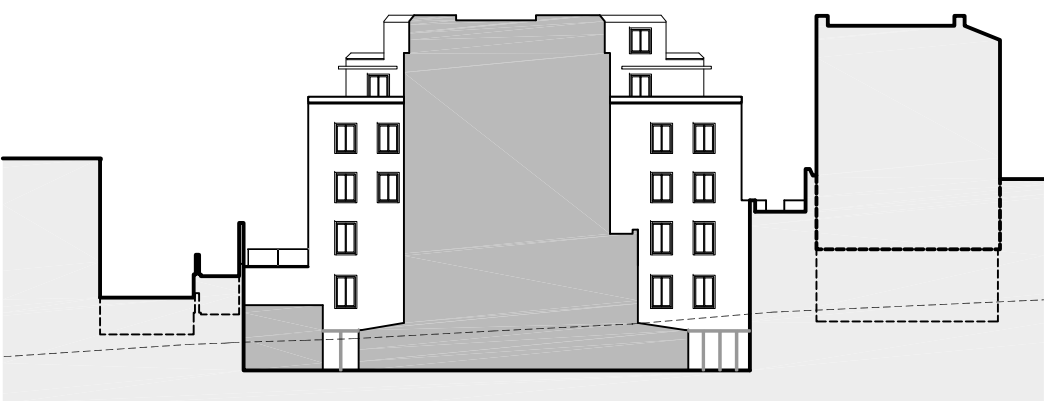
Project:
**29 New End
Hampstead
London NW3**

Title:
**PROPOSED
Building Elevations
West Elevation**

Date: 20.11.09 Drawn By: ARB Checked: ,

Scale: 1:100 @ A1 / 1:200 @ A3

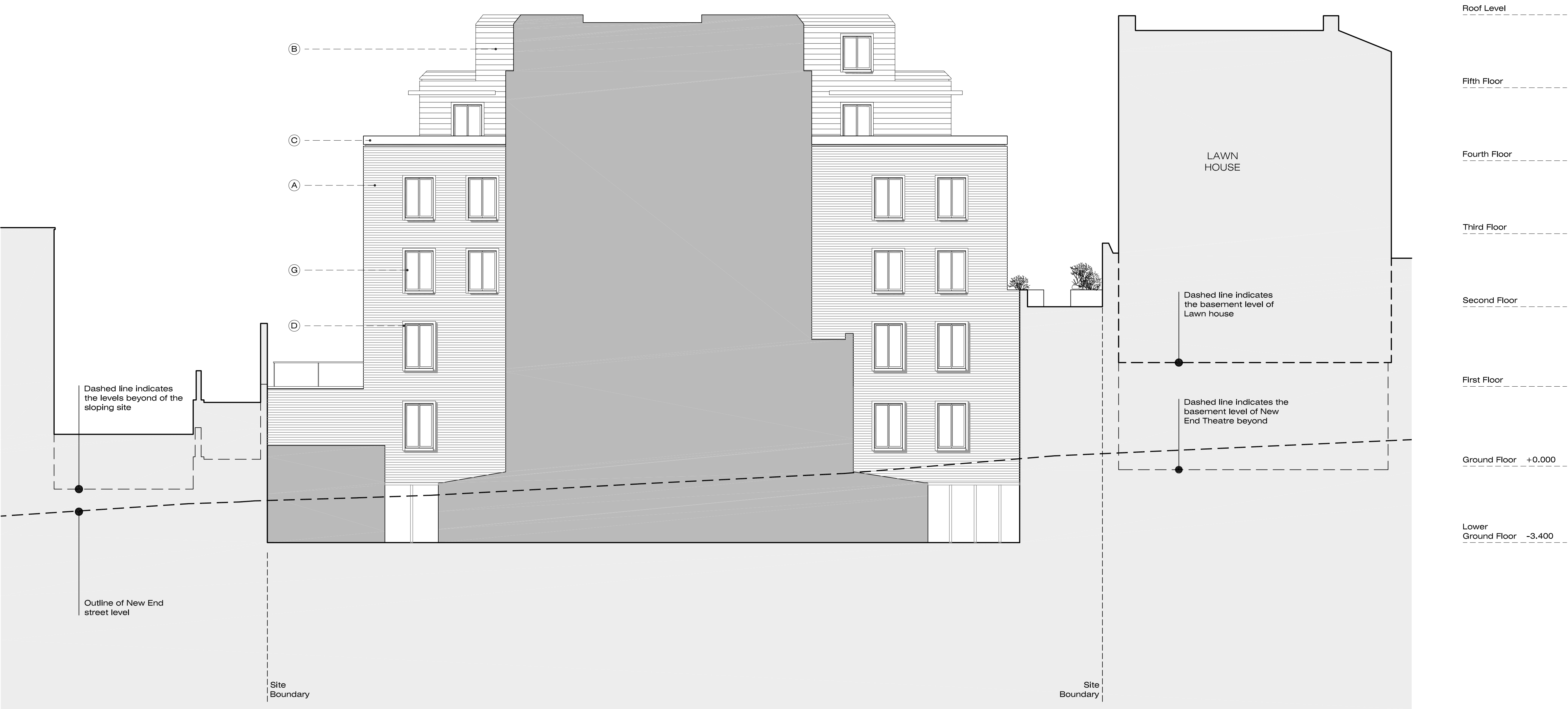
Project Ref:	Drawing No:	Revision:
NEN	NEN - PL - 340	E



Carnegie House

Proposed Building

Lawn House



General notes:

This drawing is copyright of KSR architects. This drawing must be read in conjunction with the designer's risk assessment, specification and all other relevant documentation and drawings. KSR architects accept no liability for any expense, loss or damage of whatsoever nature and however arising from any variation made to this drawing or in the execution of the work to which it relates which has not been referred to them and their approval obtained.
Do not scale from this drawing or the digital data, only figured dimensions are to be used. For Planning refer to linear scale.
Check all dimensions on site.

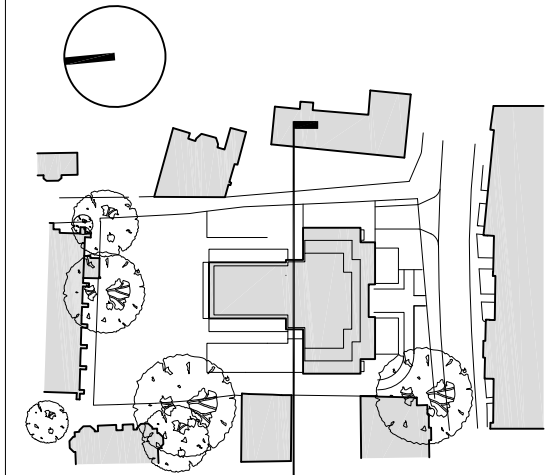
Legend

External Materials Schedule

- (A) Brickwork
- (B) Natural Slates
- (C) Stone Coping
- (D) Stone Surround
- (E) Projecting Stone Faced Balcony
- (F) Projecting Bronze Framed Surround
- (G) PPC Aluminium Glazing
- (H) PPC Metal Balustrade with Timber handrail
- (I) Metal Balustrade
- (J) PPC Protecting Louvered Sunscreen

D	PLANNING	21.05.12	LV	GJ
C	ISSUED FOR PLANNING	15.05.12	LV	GJ
B	ISSUED FOR PLANNING	24.04.12	LV	GJ
A	ISSUED FOR PLANNING	30.06.11	ARB	GJ
Rev	Notes	05/11/11	By	Chd

© KSR architects



KSR
architects

KSR architects
14 Greenland Street
London
NW1 2ND

t: + 44 (0)20 7692 5000
f: + 44 (0)20 7692 5050
www.ksr-architects.com

Project:
**29 New End
Hampstead
London NW3**

Title:
**PROPOSED
Building Elevations
North Sectional Elevation**

Date: 20.11.09 Drawn By: ARB Checked: ,

Scale: 1:100 @ A1 / 1:200 @ A3

Project Ref: Drawing No: Revision:
NEN NEN - PL - 350 D

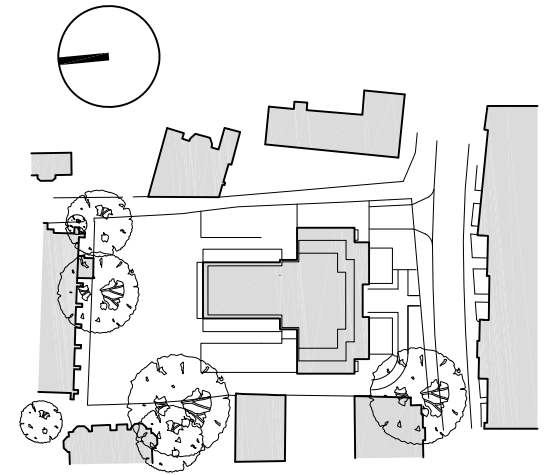


General notes:

This drawing is copyright of KSR architects. This drawing must be read in conjunction with the designer's risk assessment, specification and all other relevant documentation and drawings. KSR architects accept no liability for any expense, loss or damage of whatsoever nature and however arising from any variation made to this drawing or in the execution of the work to which it relates which has not been referred to them and their approval obtained.
Do not scale from this drawing or the digital data, only figured dimensions are to be used. For Planning refer to linear scale.
Check all dimensions on site.

D	PLANNING	21.05.12	LV	GJ
C	ISSUED FOR PLANNING	24.04.12	LV	GJ
B	Terraces facing Christ Church Cottage	02.04.12	LV	GJ
A	ISSUED FOR PLANNING	30.06.11	ARB	GJ
Rev	Notes	05.11.11	By	Chrd

© KSR architects



KSR
architects

KSR architects
14 Greenland Street
London
NW1 2ND
t: + 44 (0)20 7692 5000
f: + 44 (0)20 7692 5050
www.ksr-architects.com

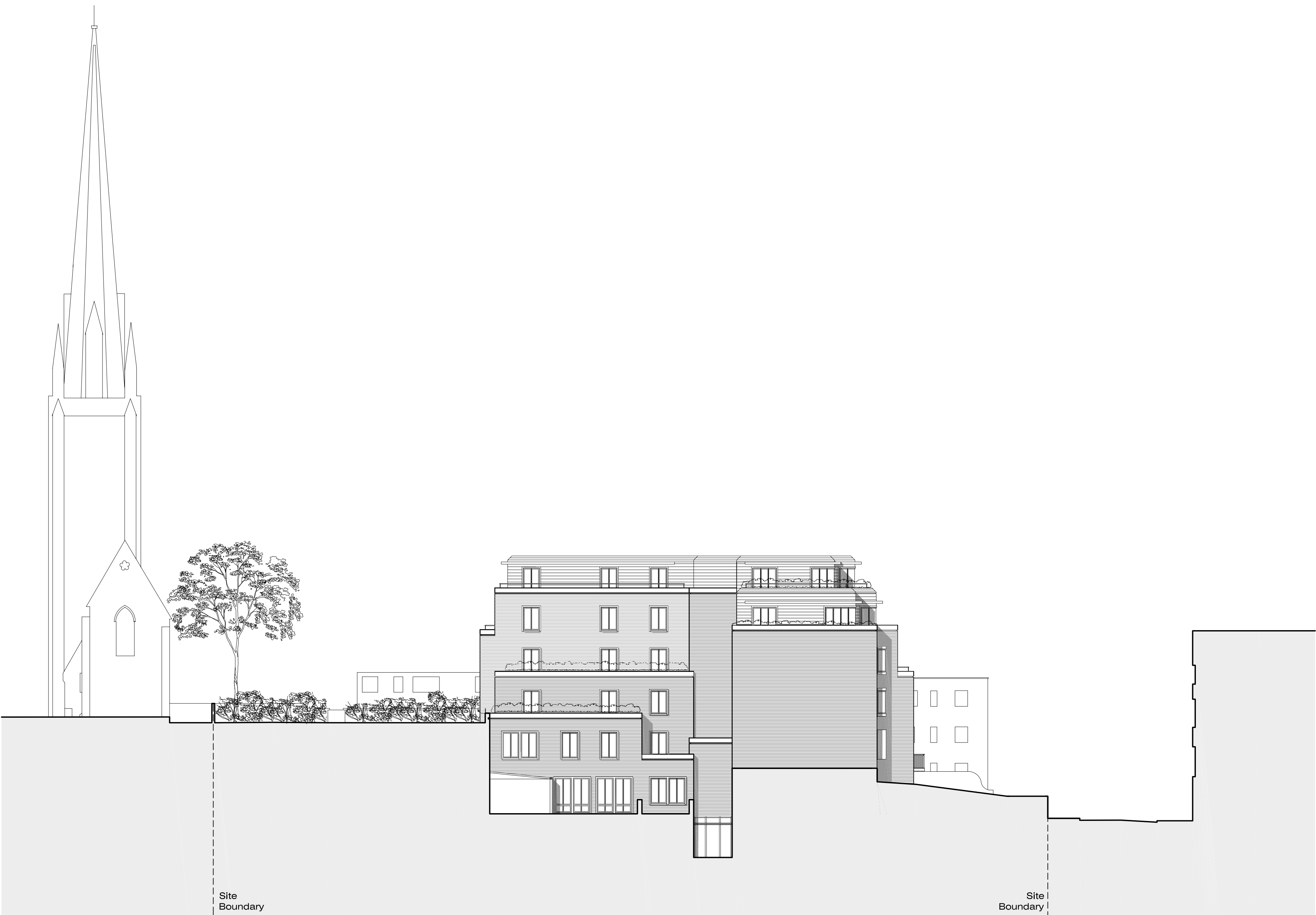
Project:
**29 New End
Hampstead
London NW3**

Title:
**Building Elevations
East Elevation
Christ Church Passage**

Date: 20.11.09 Drawn By: ARB Checked: ,

Scale: 1:200 @ A1

Project Ref:	Drawing No:	Revisions
NEN	NEN - PL - 370	D

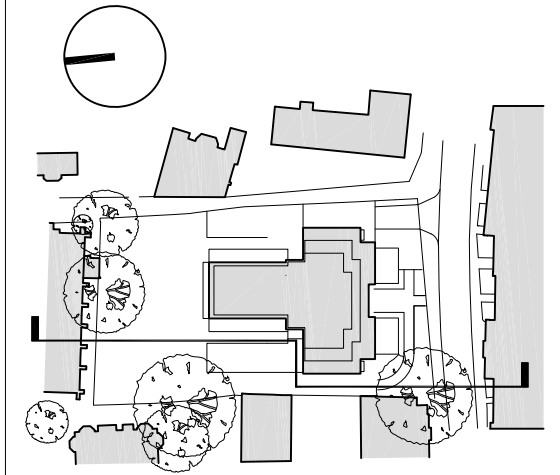


General notes:

This drawing is copyright of KSR architects. This drawing must be read in conjunction with the designer's risk assessment, specification and all other relevant documentation and drawings. KSR architects accept no liability for any expense, loss or damage of whatsoever nature and however arising from any variation made to this drawing or in the execution of the work to which it relates which has not been referred to them and their approval obtained.
Do not scale from this drawing or the digital data, only figured dimensions are to be used. For Planning refer to linear scale.
Check all dimensions on site.

D	PLANNING	21.05.12	LV	GJ
C	ISSUED FOR PLANNING	24.04.12	LV	GJ
B	ISSUED FOR INFORMATION	02.04.12	LV	GJ
A	ISSUED FOR PLANNING	30.06.11	ARB	GJ
Rev	Notes	05.11.11	By	Chrd

© KSR architects



KSR
architects

KSR architects
14 Greenland Street
London
NW1 2ND
t: + 44 (0)20 7692 5000
f: + 44 (0)20 7692 5050
www.ksr-architects.com

Project:
**29 New End
Hampstead
London NW3**

Title:
**PROPOSED
Building Elevations
West Elevation**

Date: 20.11.09 Drawn By: ARB Checked: ,

Scale: 1:200 @ A1

Project Ref:	Drawing No:	Revisions
NEN	NEN - PL - 380	D

