



Extent of Site
 New End Proposed Building Christ Church

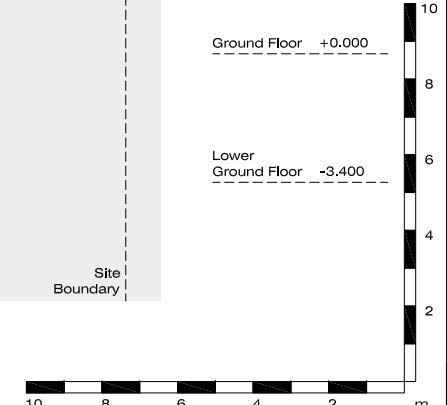


Roof Level
 Fifth Floor
 Fourth Floor
 Third Floor
 Second Floor
 First Floor
 Ground Floor +0.000
 Lower Ground Floor -3.400

Line of Brick Wall to Christ Church Passage

Site Boundary

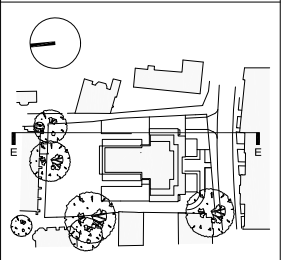
Site Boundary



General notes:
 This drawing is copyright of KSR architects. This drawing must be read in conjunction with the designer's risk assessment, specification and all other relevant documentation and drawings. KSR architects accept no liability for any expense, loss or damage of whatsoever nature and however arising from any variation made to this drawing or in the execution of the work to which it relates which has not been referred to them and their approval obtained.
 Do not scale from this drawing or the digital data, only figured dimensions are to be used. For Planning refer to linear scale.
 Check all dimensions on site.

E	ISSUED FOR PLANNING	24.04.12	LV	GU
D	Terraces facing Christ Church Cottage	02.04.12	LV	GU
C	Revised	24.02.12	LV	GU
B	ISSUED FOR INFORMATION	03.02.12	LV	GU
A	ISSUED FOR PLANNING	30.05.11	ARB	GU
Rev	Notes	30/05/11	By	CHD

© KSR architects



KSR architects

KSR architects
 14 Greenland Street
 London
 NW1 0ND
 t: +44 (0)20 7692 5000
 f: +44 (0)20 7692 5050
 www.ksr-architects.com

Project:
**29 New End
 Hampstead
 London NW3**

Title:
**PROPOSED
 Building Sections
 Section EE**

Date: 20.11.09 Drawn by: ARB Checked: .
 Scale: 1:100 @ A1 / 1:200 @ A3

Project Ref: Drawing No: Revision:
NEN NEN - PL - 240 E