

General notes:

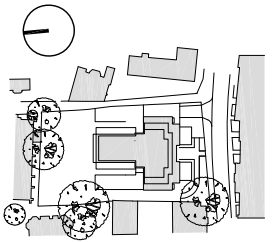
This drawing is copyright of KSR architects. This drawing must be read in conjunction with the designer's risk assessment, specification and all other relevant documentation and drawings. KSR architects accept no liability for any expense, loss or damage of whatsoever nature and however arising from any variation made to this drawing or in the execution of the work to which it relates which has not been referred to them and their approval obtained.

Do not scale from this drawing or the digital data, only figured dimensions are to be used. For Planning refer to linear scale.

Check all dimensions on site.

Rev	Notes	Summary	By	Check
-----	-------	---------	----	-------

© KSR architects



KSR
architects

KSR architects
14 Greenland Street
London
NW1 0ND

t: + 44 (0)20 7692 5000
f: + 44 (0)20 7692 5050
www.ksr-architects.com

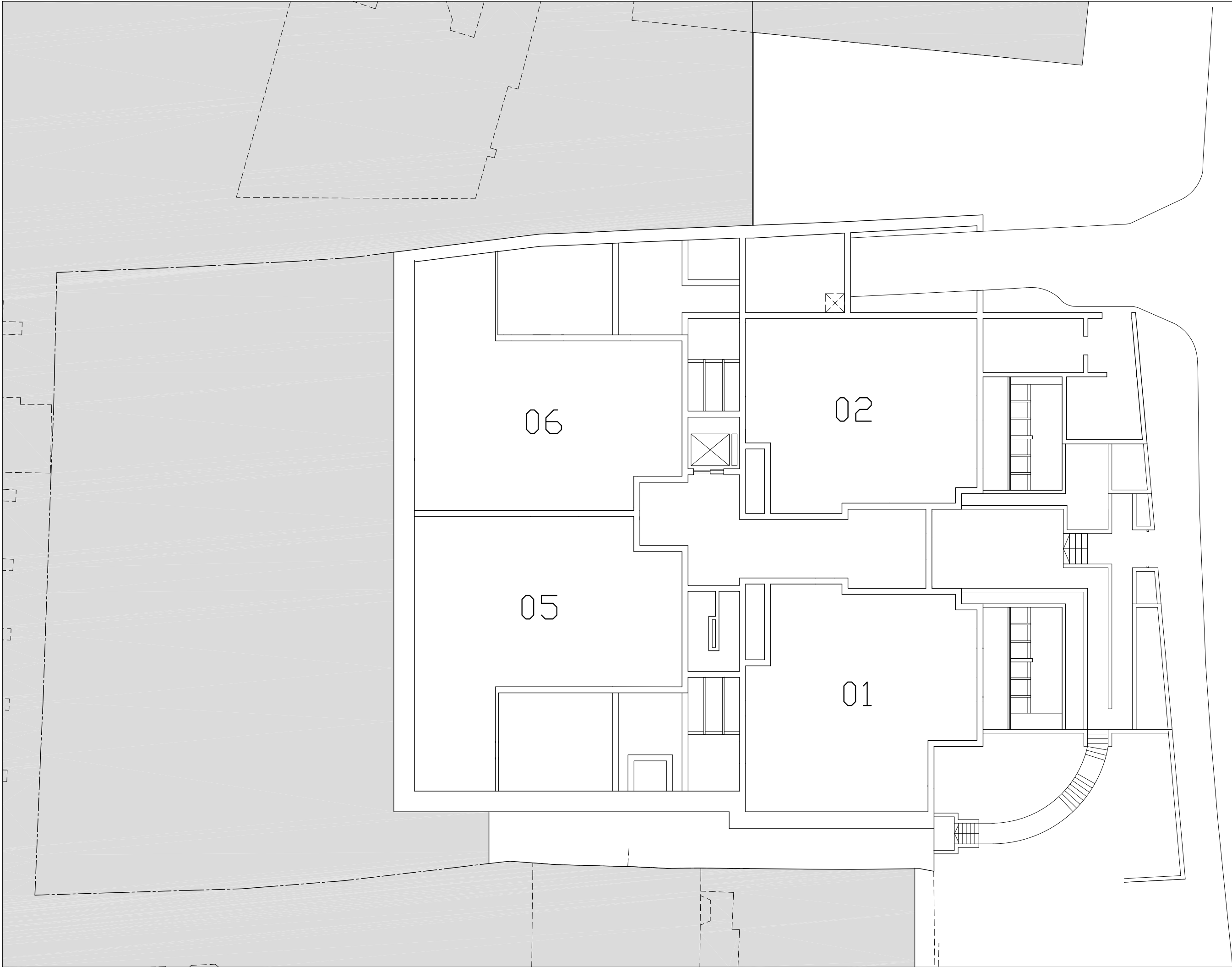
Project:
**29 New End
Hampstead
London NW3**

Task:
**Building Plans - 25% Tool Kit
Lower Ground Floor
Tool Kit Option**

Date:	16.02.12	Drawn By:	ARB	Checked:	.
-------	----------	-----------	-----	----------	---


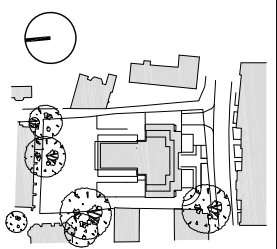
Scale:	1:100 @ A1 / 1:200 @ A3
--------	-------------------------

Project Ref:	Drawing Ref:	Revision:
NEN	NEN - TK - 090	A



General notes:
This drawing is copyright of KSR architects.
This drawing must be read in conjunction
with the designer's risk assessment,
specification and all other relevant
documentation and drawings. KSR architects
accept no liability for any expense, loss or
damage of whatsoever nature and however
arising from any variation made to this
drawing or in the execution of the work to
which it relates which has not been referred
to them and their approval obtained.
Do not scale from this drawing or the digital
data, only figured dimensions are to be
used. For Planning refer to linear scale.
Check all dimensions on site.

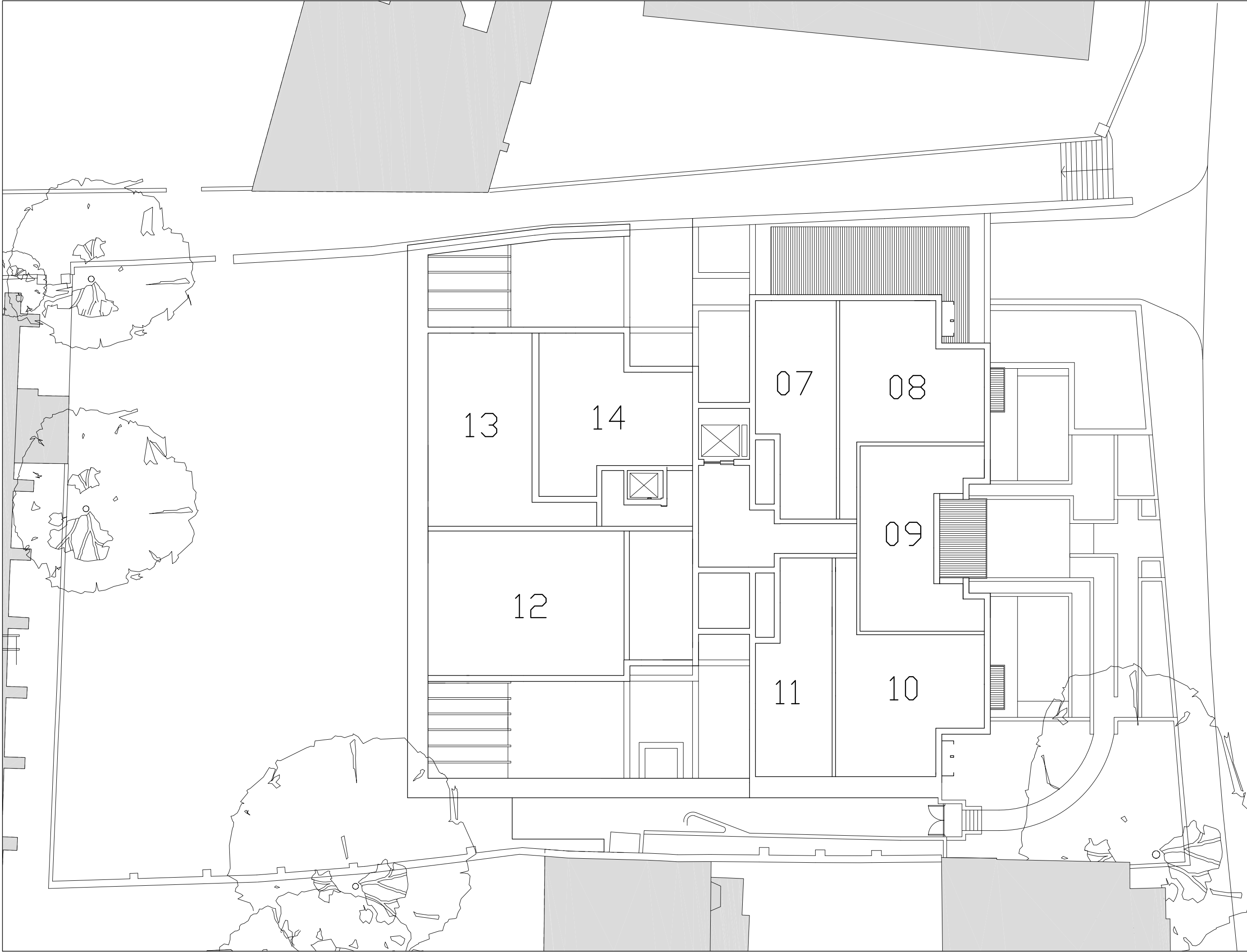
Rev	Notes	dd.mm.yy	By	Chkd
© KSR architects				



KSR architects
14 Greenland Street
London
NW1 0ND

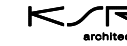
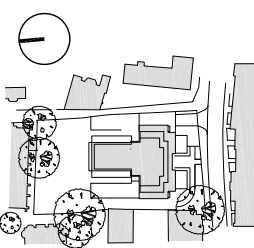
t: + 44 (0)20 7882 5000
f: + 44 (0)20 7882 5050
www.ksr-architects.com

Project: 29 New End Hampstead London NW3		
Title: Building Plans - 25% Tool Kit Ground Floor Tool Kit Option		
Date:	16.02.12	Drawn By: ARB
Scale:	1:100	Checked: .
Project Ref:	NEN	Drawing No:
Drawing No:	NEN - TK - 100	Revision:
Revision:	A	



General notes:
This drawing is copyright of KSR architects.
This drawing must be read in conjunction
with the designer's risk assessment,
specification and all other relevant
documentation and drawings. KSR architects
accept no liability for any expense, loss or
damage of whatsoever nature and however
arising from any variation made to this
drawing or in the execution of the work to
which it relates which has not been referred
to them and their approval obtained.
Do not scale from this drawing or the digital
data, only figured dimensions are to be
used. For Planning refer to linear scale.
Check all dimensions on site.

Rev	Notes	dd.mm.yy	By	Chkd
01	KSR architects			



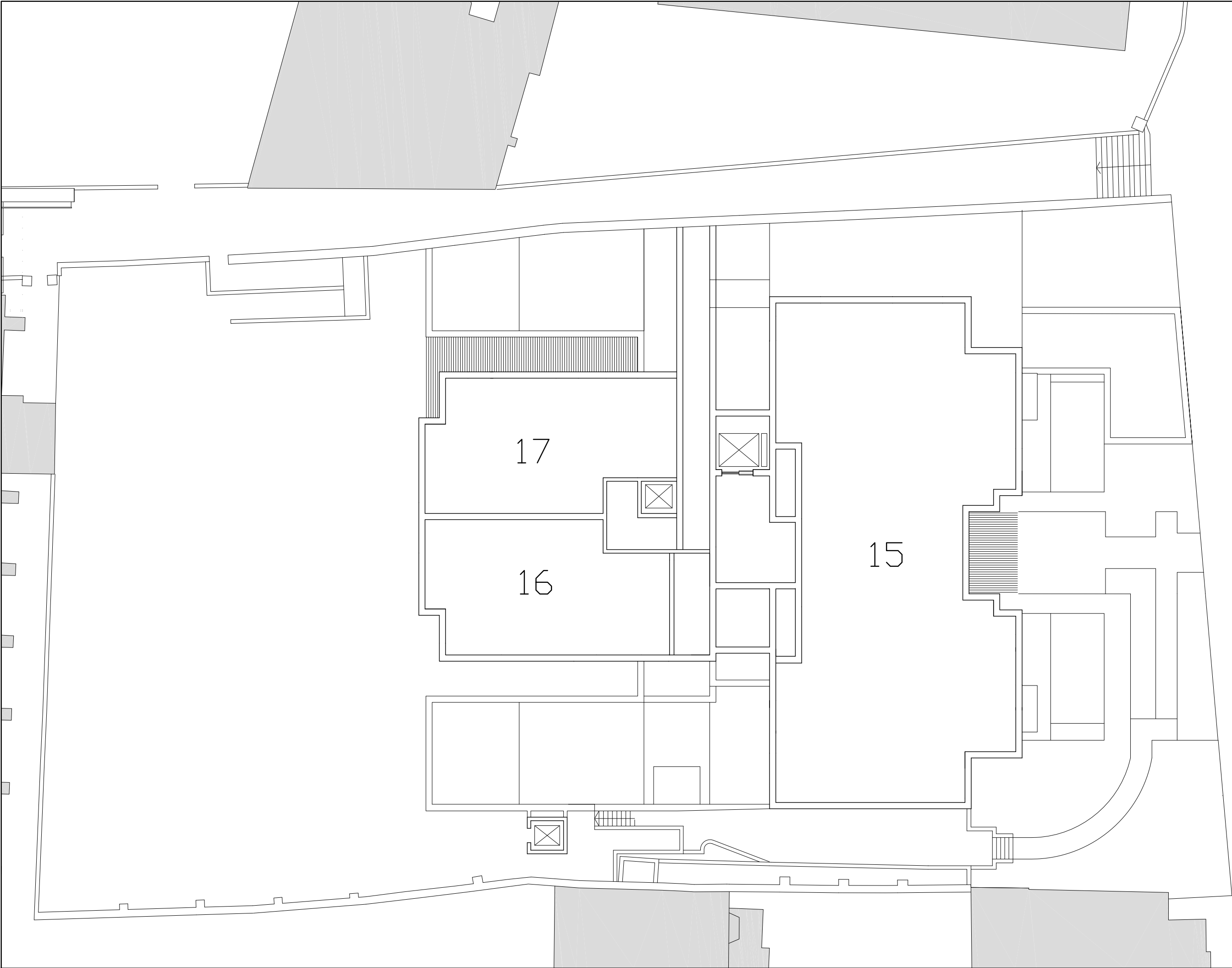
KSR architects
14 Greenland Street
London
NW1 0ND

t: +44 (0)20 7892 5000
e: +44 (0)20 7892 5050
www.ksr-architects.com

Project:
29 New End
Hampstead
London NW3

Title:
Building Plans - 25% Tool Kit
First Floor
Tool Kit Option

Date:	16.02.12	Drawn By:	ARB	Checked:	
Scale:	1:100	● A1	/ 1:200	● A3	
Project Ref:	NEN	Drawing No:	NEN - TK - 110	Revision:	A

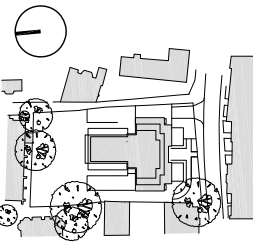


General notes:

This drawing is copyright of KSR architects.
This drawing must be read in conjunction
with the designer's risk assessment,
specification and all other relevant
documentation and drawings. KSR architects
accept no liability for any expense, loss or
damage of whatsoever nature and however
arising from any variation made to this
drawing or in the execution of the work to
which it relates which has not been referred
to them and their approval obtained.
Do not scale from this drawing or the digital
data, only figured dimensions are to be
used. For Planning refer to linear scale.
Check all dimensions on site.

Rev Notes dd.mm.yy By Chid

© KSR architects



KSR
architects

KSR architects
14 Greenland Street
London
NW1 0ND
t: + 44 (0)20 7892 5000
f: + 44 (0)20 7892 5050
www.ksr-architects.com

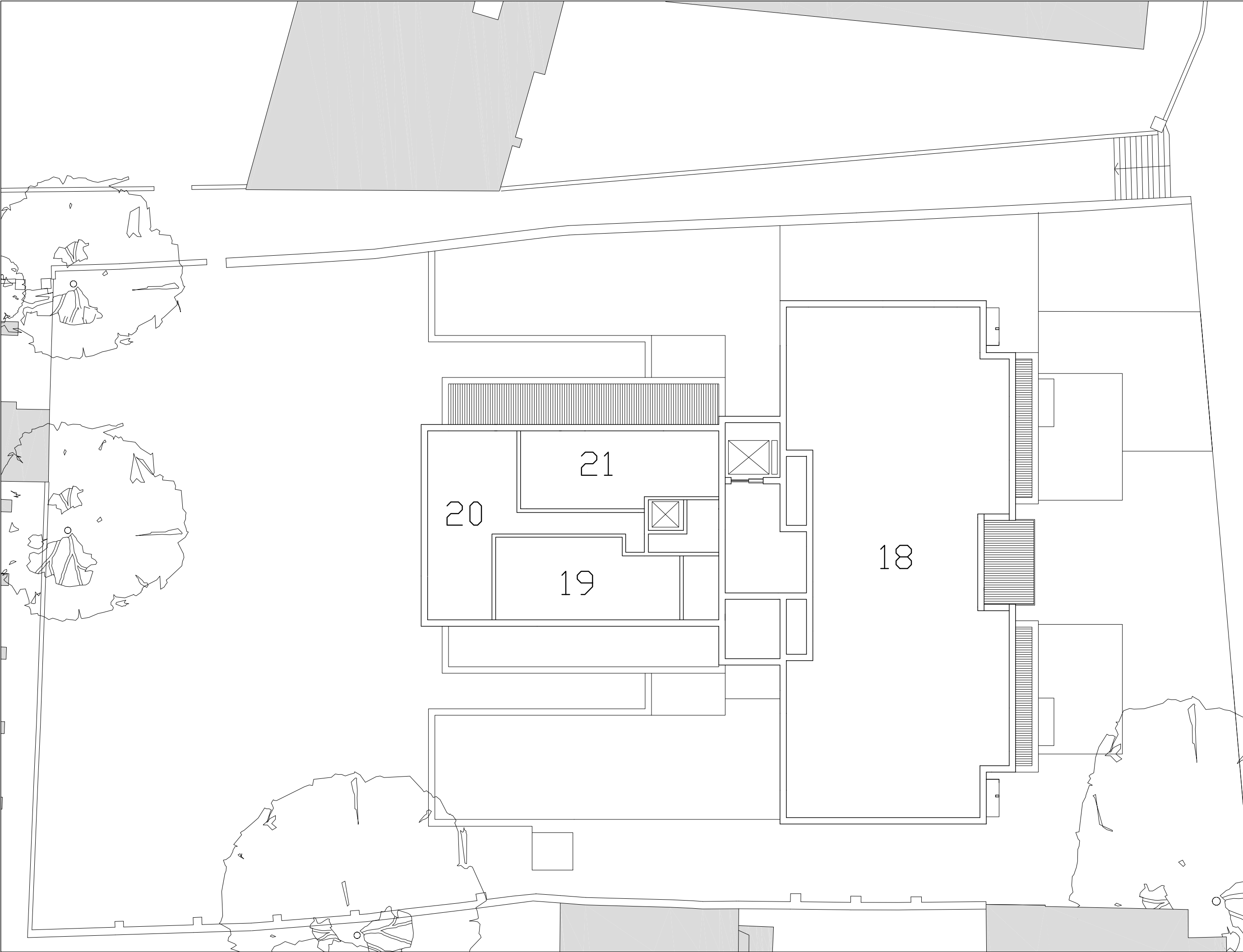
Project:
29 New End
Hampstead
London NW3

Title:
Building Plans - 25% Tool Kit
Second Floor
Tool Kit Option

Date: 16.02.12 Drawn By: ARB Checked: .

Scale: 1:100 @ A1 / 1:200 @ A3

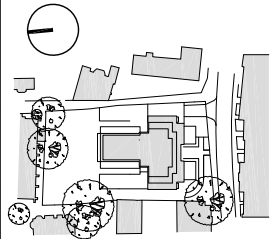
Project Ref: Drawing No: Revision:
NEN NEN - TK - 120 A



General notes:
This drawing is copyright of KSR architects.
This drawing must be read in conjunction
with the designer's risk assessment,
specification and all other relevant
documentation and drawings. KSR architects
accept no liability for any expense, loss or
damage of whatsoever nature and however
arising from any variation made to this
drawing or in the execution of the work to
which it relates which has not been referred
to them and their approval obtained.
Do not scale from this drawing or the digital
data, only figured dimensions are to be
used. For Planning refer to linear scale.
Check all dimensions on site.

Rev	Notes	As.mmm.yy	By	Chkd
-----	-------	-----------	----	------

© KSR architects



KSR
architects

KSR architects
14 Greenland Street
London
NW1 0ND
t: +44 (0)20 7882 5000
f: +44 (0)20 7552 5000
www.ksr-architects.com

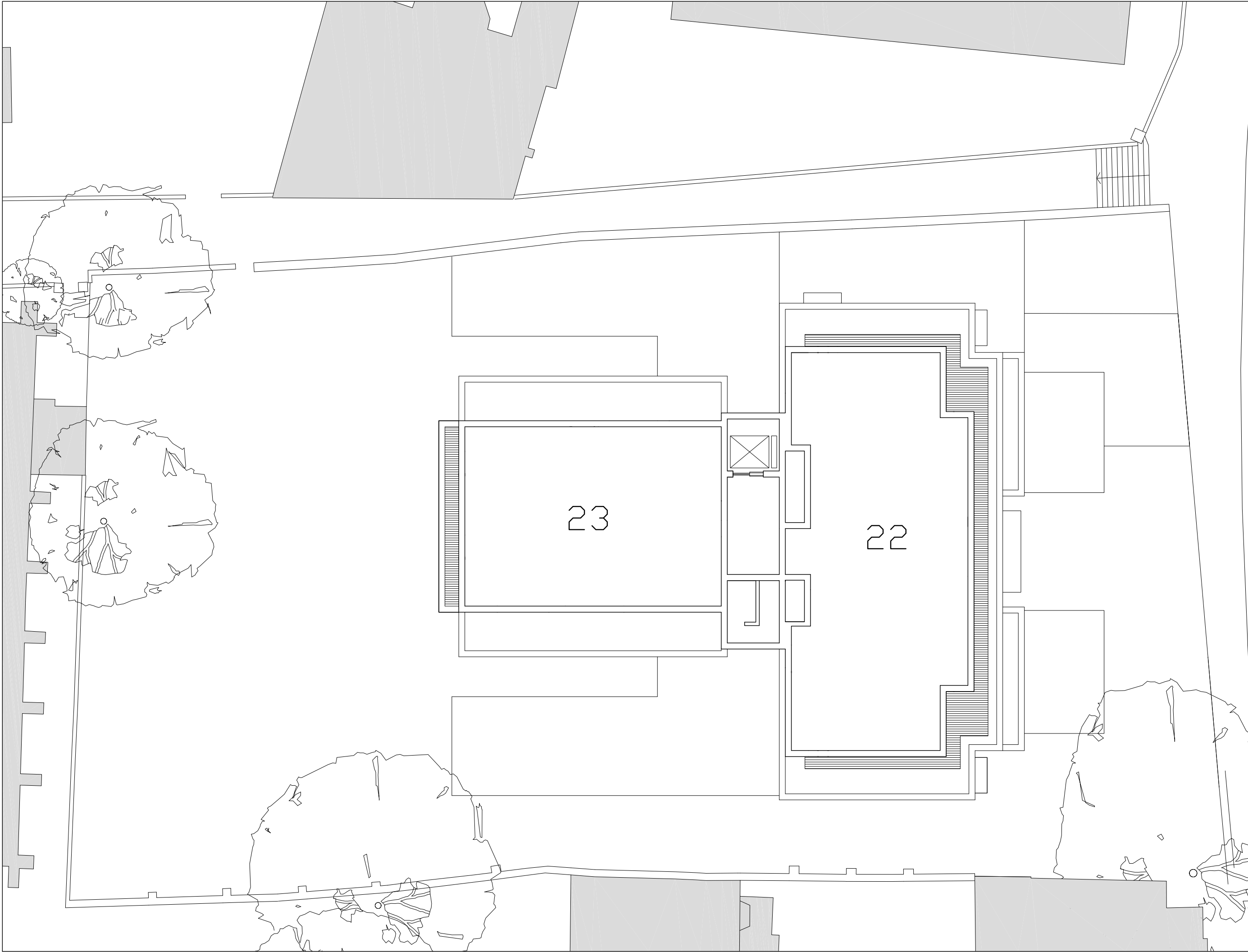
Project:
29 New End
Hampstead
London NW3

Title:
Building Plans - 25% Tool Kit
Third Floor
Tool Kit Option

Date: 16.02.12 Drawn By: ARB Checked: .

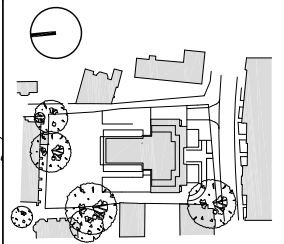
Scale: 1:100 @ A1 / 1:200 @ A3

Project Ref: NEN Drawing No: NEN - TK - 130 Revision: A



General notes:
This drawing is copyright of KSR architects.
This drawing must be read in conjunction
with the designer's risk assessment,
specification and all other relevant
documentation and drawings. KSR architects
accept no liability for any expense, loss or
damage of whatsoever nature and however
arising from any variation made to this
drawing or in the execution of the work to
which it relates which has not been referred
to them and their approval obtained.
Do not scale from this drawing or the digital
data, only figured dimensions are to be
used. For Planning refer to linear scale.
Check all dimensions on site.

Rev	Notes	dd.mm.yy	By	Chkd
©KSR architects				



KSR
architects

KSR architects
14 Greenland Street
London
NW1 0ND
t: + 44 (0)20 7692 5000
f: + 44 (0)20 7692 5000
www.ksr-architects.com

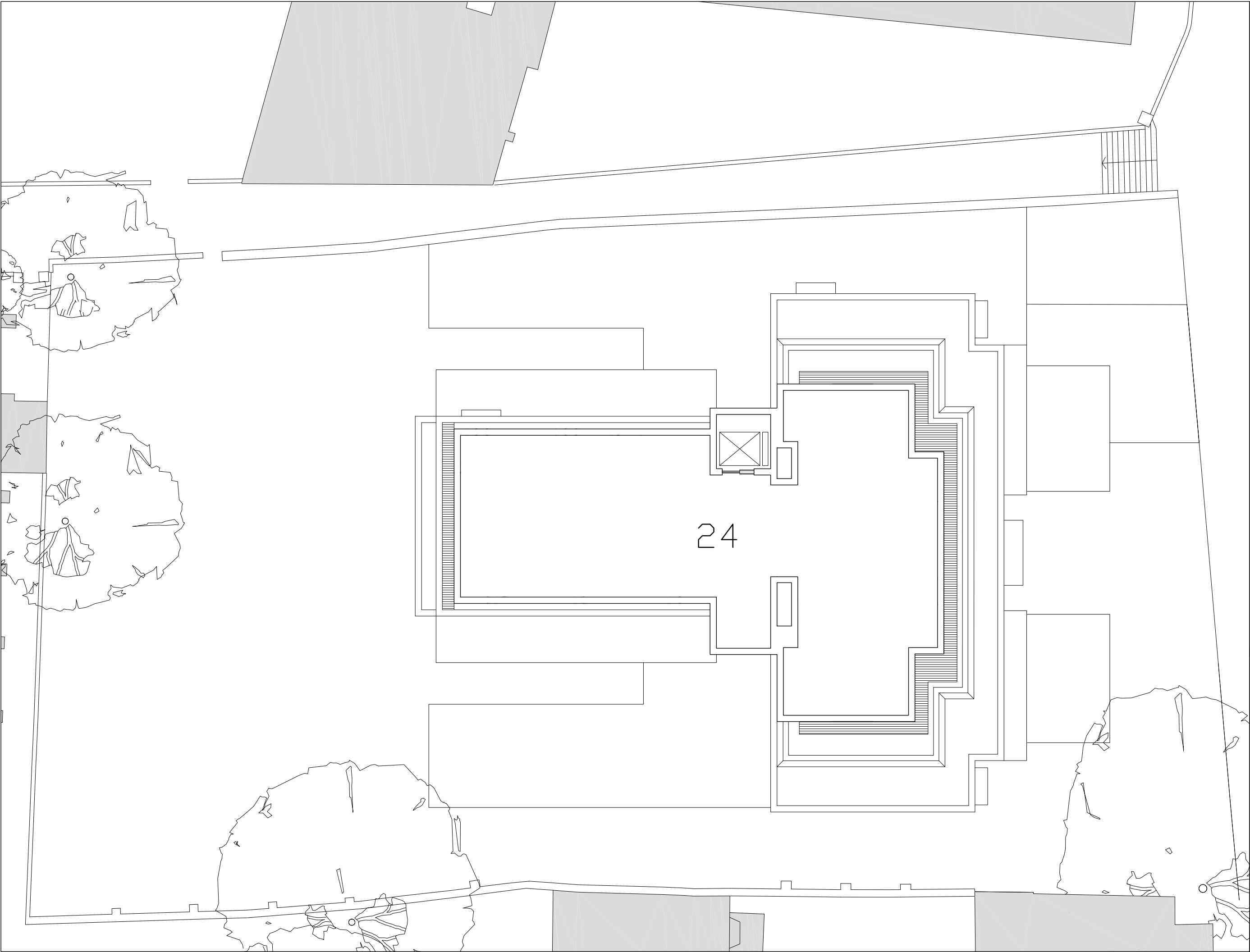
Project:
29 New End
Hampstead
London NW3

Title:
Building Plans - 25% Tool Kit
Fourth Floor
Tool Kit Option

Date: 16.02.12 Drawn By: ARB Checked: .

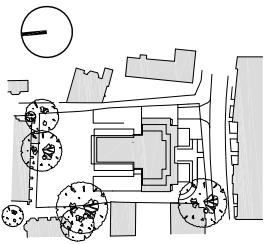
Scale: 1:100 ● A1 / 1:200 ● A3

Project Ref: NEN Drawing No: NEN - TK - 140 Revision: A



General notes:
This drawing is copyright of KSR architects.
This drawing must be read in conjunction
with the designer's risk assessment,
specification and all other relevant
documentation and drawings. KSR architects
accept no liability for any expense, loss or
damage of whatsoever nature and however
arising from any variation made to this
drawing or in the execution of the work to
which it relates which has not been referred
to them and their approval obtained.
Do not scale from this drawing or the digital
data, only figured dimensions are to be
used. For Planning refer to linear scale.
Check all dimensions on site.

Rev	Notes	dd.mm.yy	By	Chkd
©KSR architects				



KSR
architects

KSR architects
14 Greenland Street
London
NW1 0ND

t: + 44 (0)20 7692 5000
f: + 44 (0)20 7692 5050
www.ksr-architects.com

Project:
29 New End
Hampstead
London NW3

Title:
Building Plans - 25% Tool Kit
Fifth Floor
Tool Kit Option

Date: 16.02.12 Drawn By: ARB Checked: .
Scale: 1:100 ● A1 / 1:200 ● A3

Project Ref: NEN Drawing No: NEN - TK - 150 Revision: A