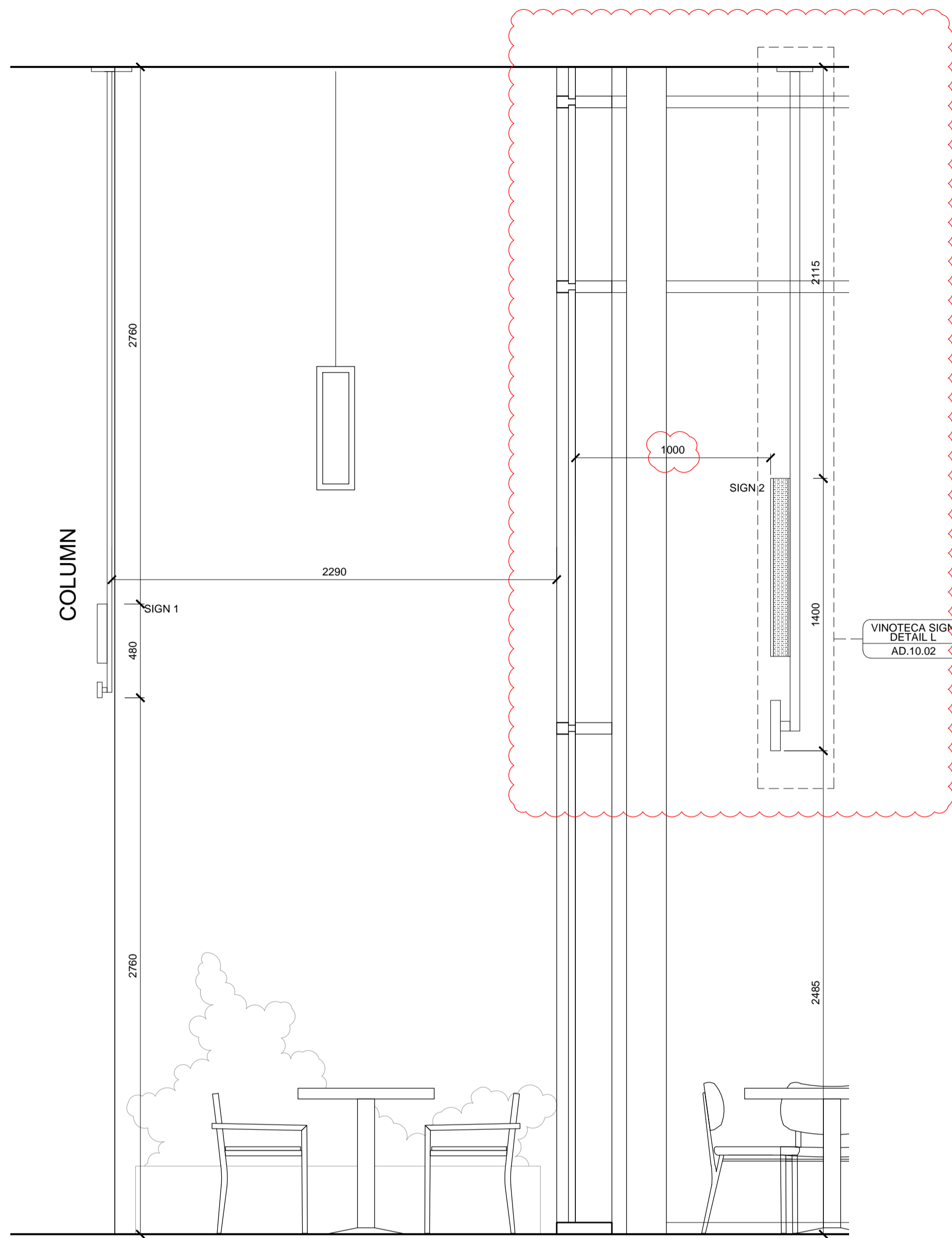
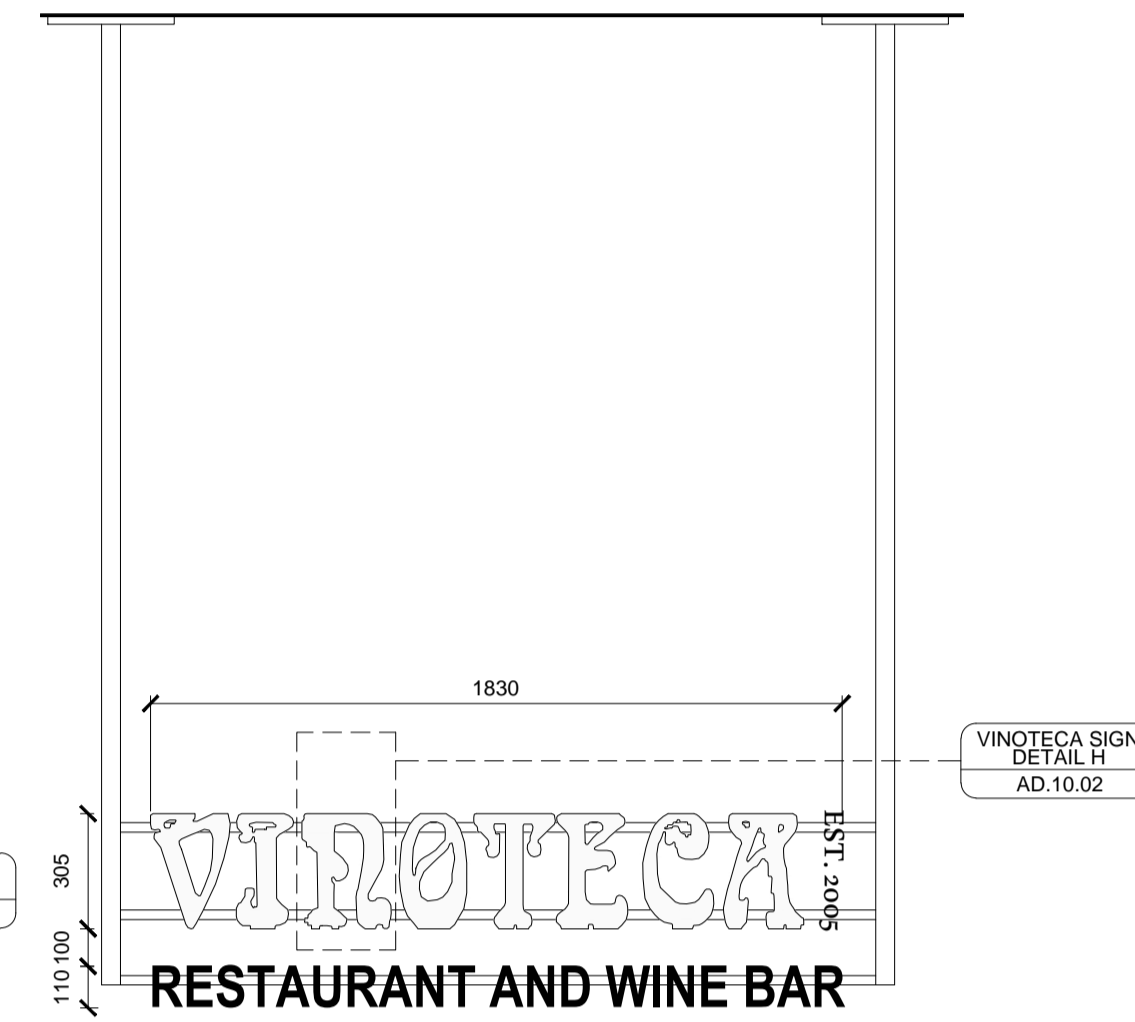


REVISION	DATE	DESCRIPTION
A	17.11.14	SIGN 2 TO BE HUNG 1M BEHIND GLASS. SIGN 1 WILL NOT BE LIT.



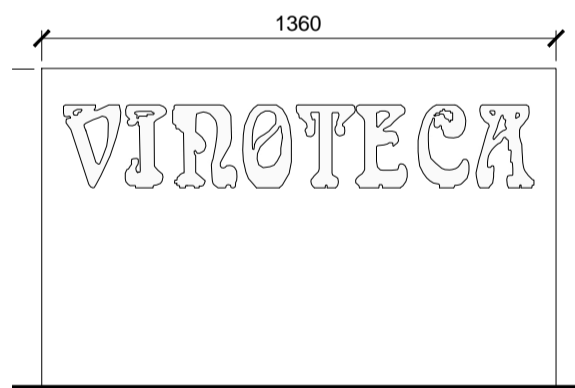
C FRONT ELEVATION SCALE 1:100@A1

SIGN 1:
 ENTRANCE SIGN TO BE HUNG FROM CEILING IN BETWEEN COLUMNS OPPOSITE MAIN ENTRANCE
 - 'VINOTECA' WILL NOT BE LIT
 - 'RESTAURANT AND WINE BAR' WILL NOT BE LIT AND WILL BE MADE FROM SATIN NICKEL.



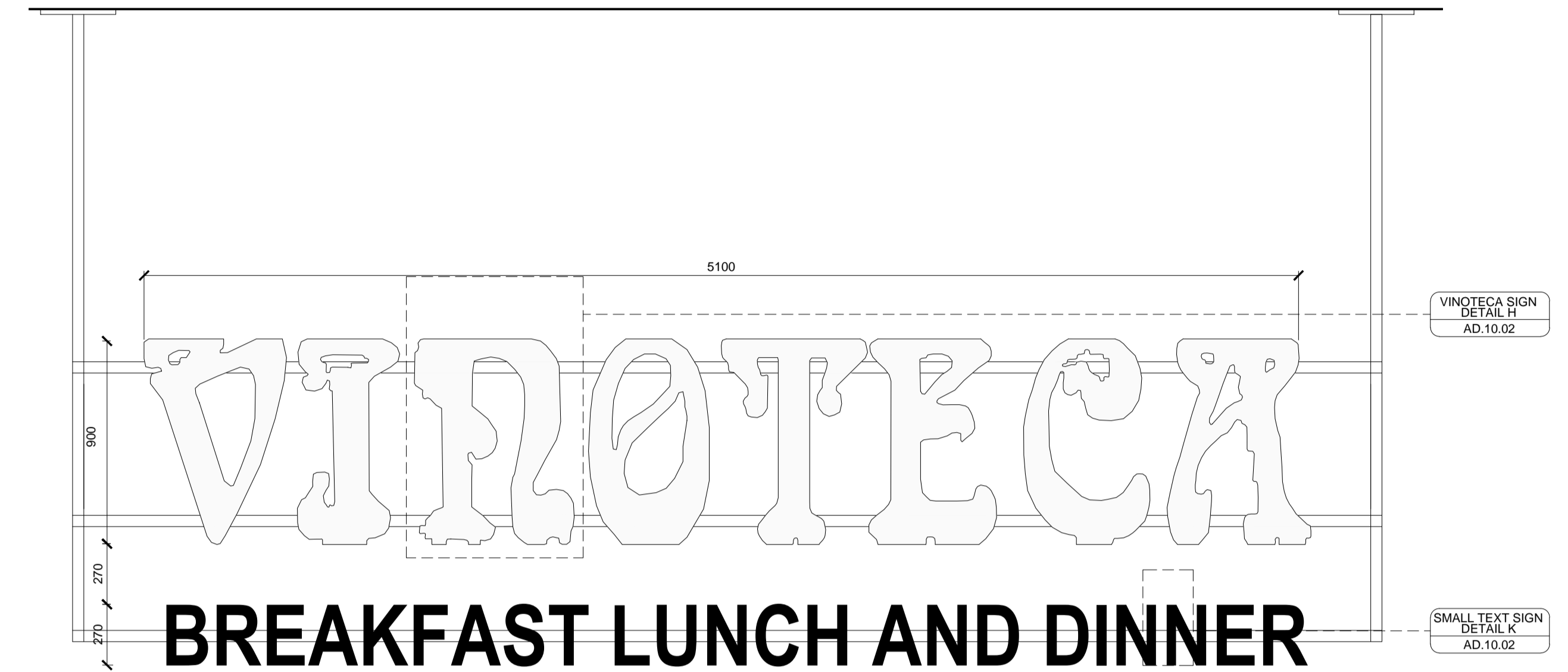
D FRONT ELEVATION SCALE 1:100@A1

SIGN 3:
 BOX FLOOR SIGN TO SIT ON WINDOW CILL BEHIND GLASS
 THIS SIGN WILL NOT BE LIT
 - 'VINOTECA' WILL BE MADE FROM SATIN NICKEL AND WILL SIT INSIDE GLASS BOX



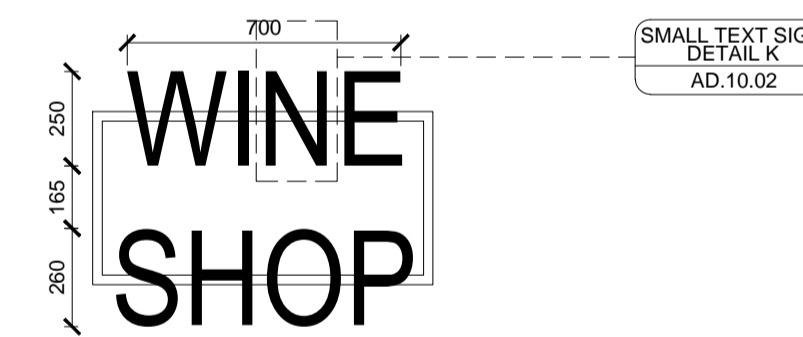
F FRONT ELEVATION SCALE 1:100@A1

SIGN 2:
 LARGE SIGN TO BE HUNG FROM CEILING BEHIND GLASS ON FRONT ELEVATION
 - 'VINOTECA' WILL BE INTERNALLY LIT
 - 'BREAKFAST LUNCH AND DINNER' WILL BE LIT

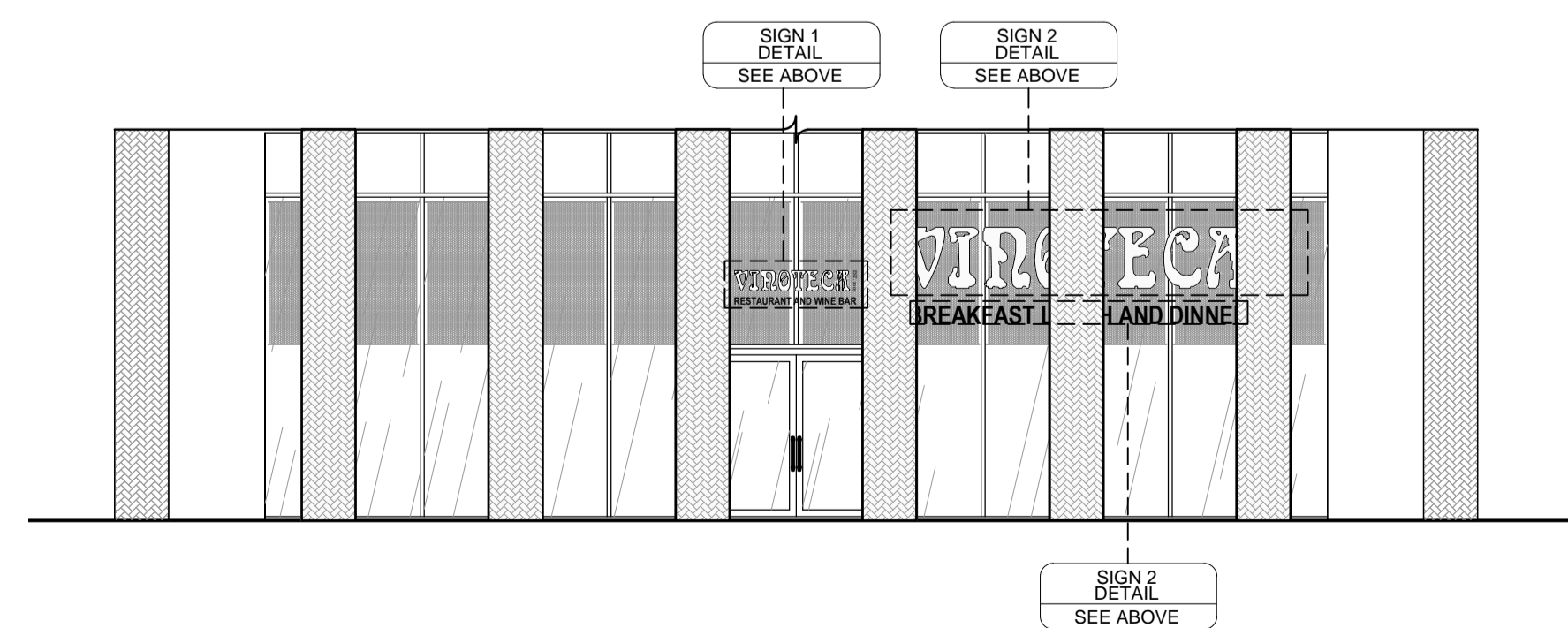


E FRONT ELEVATION SCALE 1:100@A1

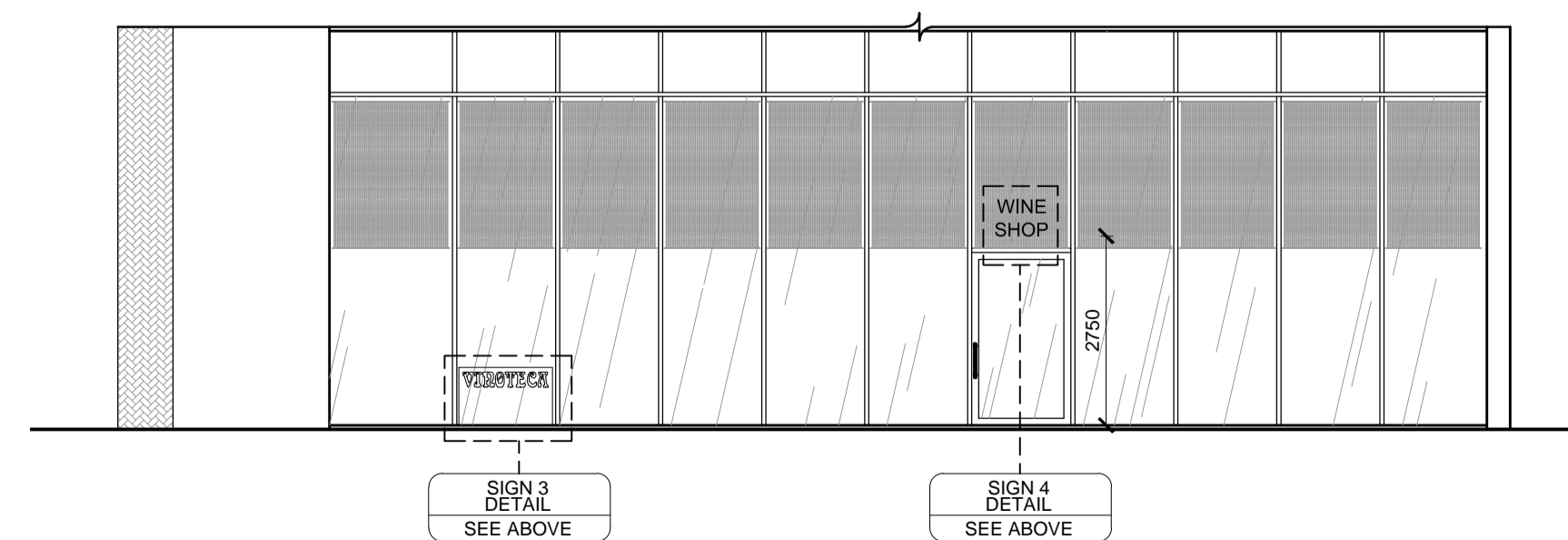
SIGN 4:
 WINE SHOP WILL BE ATTACHED TO WINDOW MULLIONS BEHIND GLASS
 - 'WINE SHOP' WILL BE INTERNALLY LIT



G FRONT ELEVATION SCALE 1:100@A1



A FRONT ELEVATION SCALE 1:100@A1



B SIDE ELEVATION SCALE 1:100@A1

CANTORMASTERS
 INTERIOR DESIGN

No1 The Colour House
 7 Bell Yard Mews
 London SE1 3UA
 Tel: +44(0)20 7407 5434
 e: info@cantormasters.com
 www.cantormasters.com

CLIENT
VINOTECA

PROJECT
VINOTECA KING'S CROSS
ONE PANCRAS SQUARE
LONDON N1

DRAWING
EXTERIOR SIGNAGE DETAIL

JOB No	SCALE	DATE
5013	AS SHOWN	07.10.14
DRAWING No	REVISION	
AD.10.01	A	A1 SHEET

© Copyright is reserved by CantorMasters Ltd.
 This drawing is the property of CantorMasters Ltd and is issued on condition that it is not copied in any manner or issued to third parties without the written consent from CantorMasters Ltd. CantorMasters Ltd does not warrant the accuracy of the measurements or other information contained on the drawing and all parties using this drawing and the information contained within must check and verify and satisfy themselves as to the accuracy or otherwise of such measurements or other information.
 Do not scale from this drawing. All figured measurements are indicated as a general guide only. All discrepancies or omissions must be reported to CantorMasters Ltd for their comments or approval prior to commencing work.
 This drawing to be read in conjunction with all other consultants information and any anomalies reported to CantorMasters Ltd prior to commencement on site.
 This drawing is subject to approval by statutory authorities and as such is subject to revision as required.

CONSTRUCTION