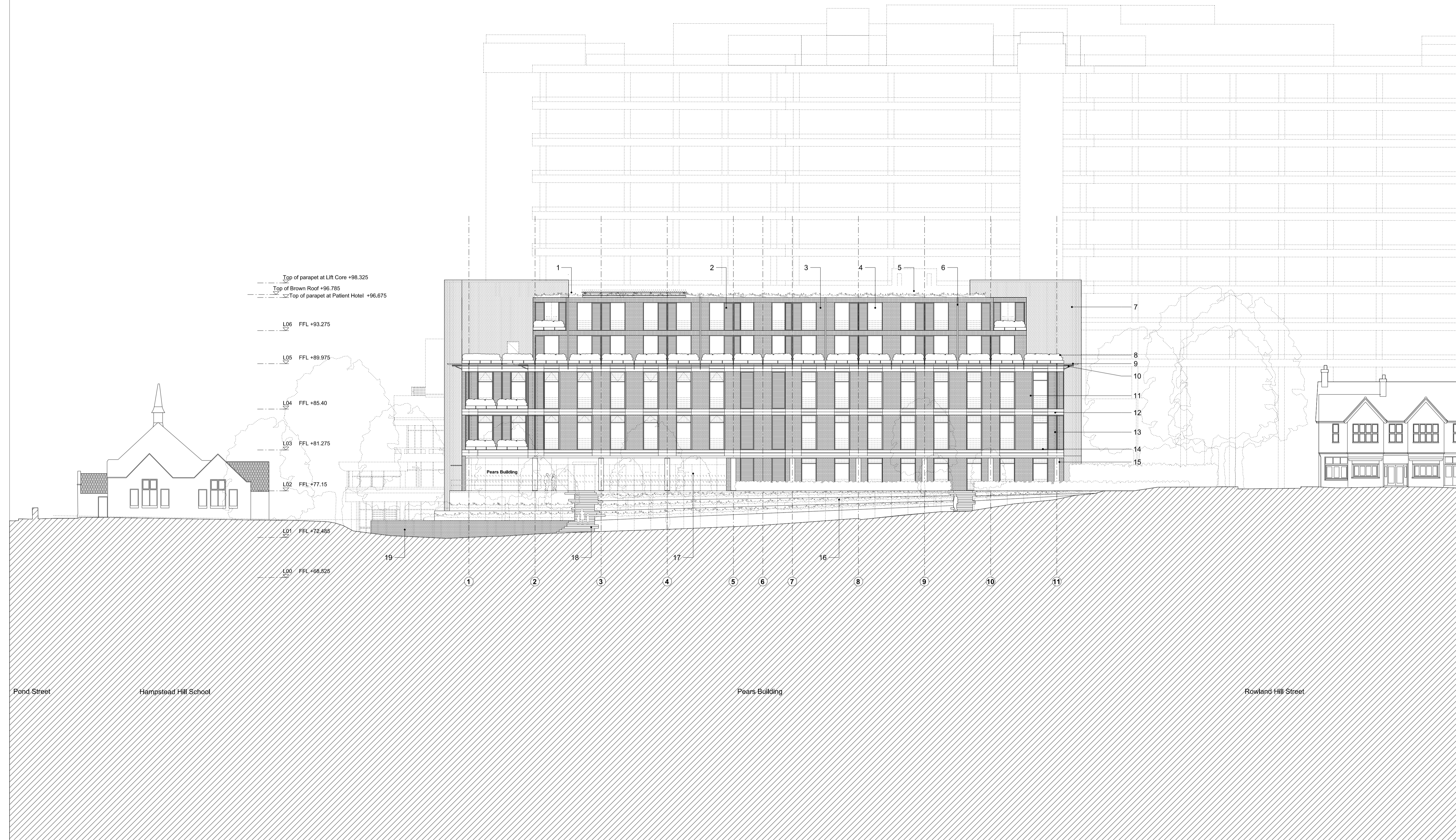
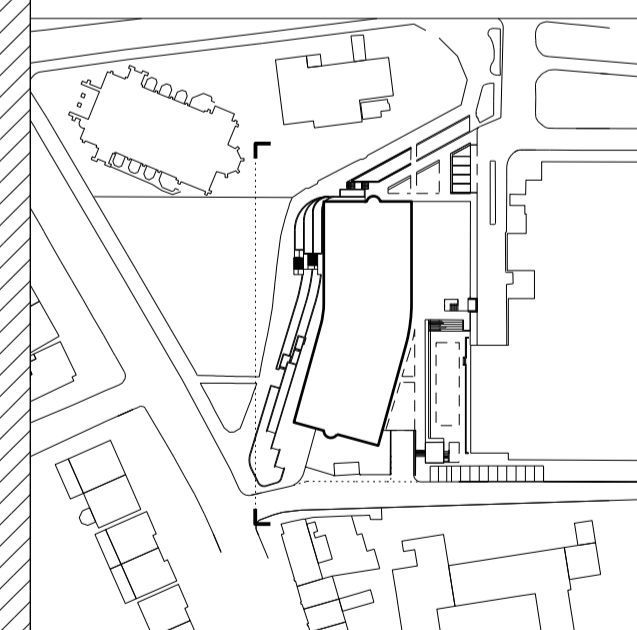


Royal Free Hospital



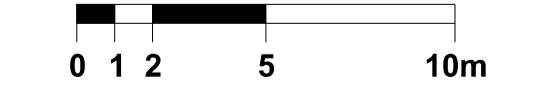
KEY

- 1 Brown Roof
- 2 Timber louvres over glazing
- 3 Brickwork panel
- 4 Fritted glazed panel
- 5 PV panels
- 6 Painted metal rwp
- 7 Brickwork to staircase/ lift enclosure
- 8 Hedge in planter
- 9 Horizontal timber louvres
- 10 Facade Monorail
- 11 Brickwork panel
- 12 Precast concrete panel
- 13 Vertical timber louvres over glazing
- 14 Fritted glazed panel
- 15 Fairfaced RC column
- 16 Fairfaced RC retaining wall
- 17 Glazing to Cafe area
- 18 Stairs to entrance
- 19 Brick wall
- 20 PPC Metal Weather Louvres to Car Park
- 21 Louvered Screen to Roof Top Plant
- 22 Glazing to Seminar Room
- 23 Timber Fencing to Loading Bay
- 24 Glazing to Charity Offices



Elevation Key Plan

Scale at 1:200



Work Package	Cost Check	Info/Briefing	Tender	Contract	Construction

Date	Rev.	Description	Approved By
03.10.2014	A	For Planning Application Client Sign-Off	
17.10.2014	B	Update for Planning Application Client Sign-Off	
27.10.2014	C	Submitted for Planning	

Date	Rev.	Description	Approved By
03.10.2014	A	For Planning Application Client Sign-Off	
17.10.2014	B	Update for Planning Application Client Sign-Off	
27.10.2014	C	Submitted for Planning	

Project	Pears Building
Subject	Proposed West Elevation
Architects	Hopkins Architects Partnership LLP 27 Broadley Terrace, London, NW1 6LG T: 020 7724 1751 E: mail@hopkins.co.uk

Sort Code	Drawing Number	Rev.
A/R/FMR	2101	C
Date	03.10.2014	Scale 1:200 at A1