

Issued For

PLANNING

General Notes:

THIS DRAWING HAS BEEN PREPARED BY DS DESIGN SOLUTIONS AND THE DATA CONTAINED HEREIN MAY BE USED OR REPRODUCED ONLY WITH DS DESIGN SOLUTIONS' APPROVAL.

Rev.	Description	Date	Signed	Checked

--

--

Scale	Date	Drawn by	Checked by
1:200@A3	Sep 2014	MEG	DS
Drawing Title			
Proposed Site Plan			
Project			
Epworth-Antrim Road NW3			

DS

design solutions

561 Finchley Road
London NW3 7BJ
Phone 020 7433 3939
Fax 020 7794 4279
www.DesignSolutionsUK.com

Project no.

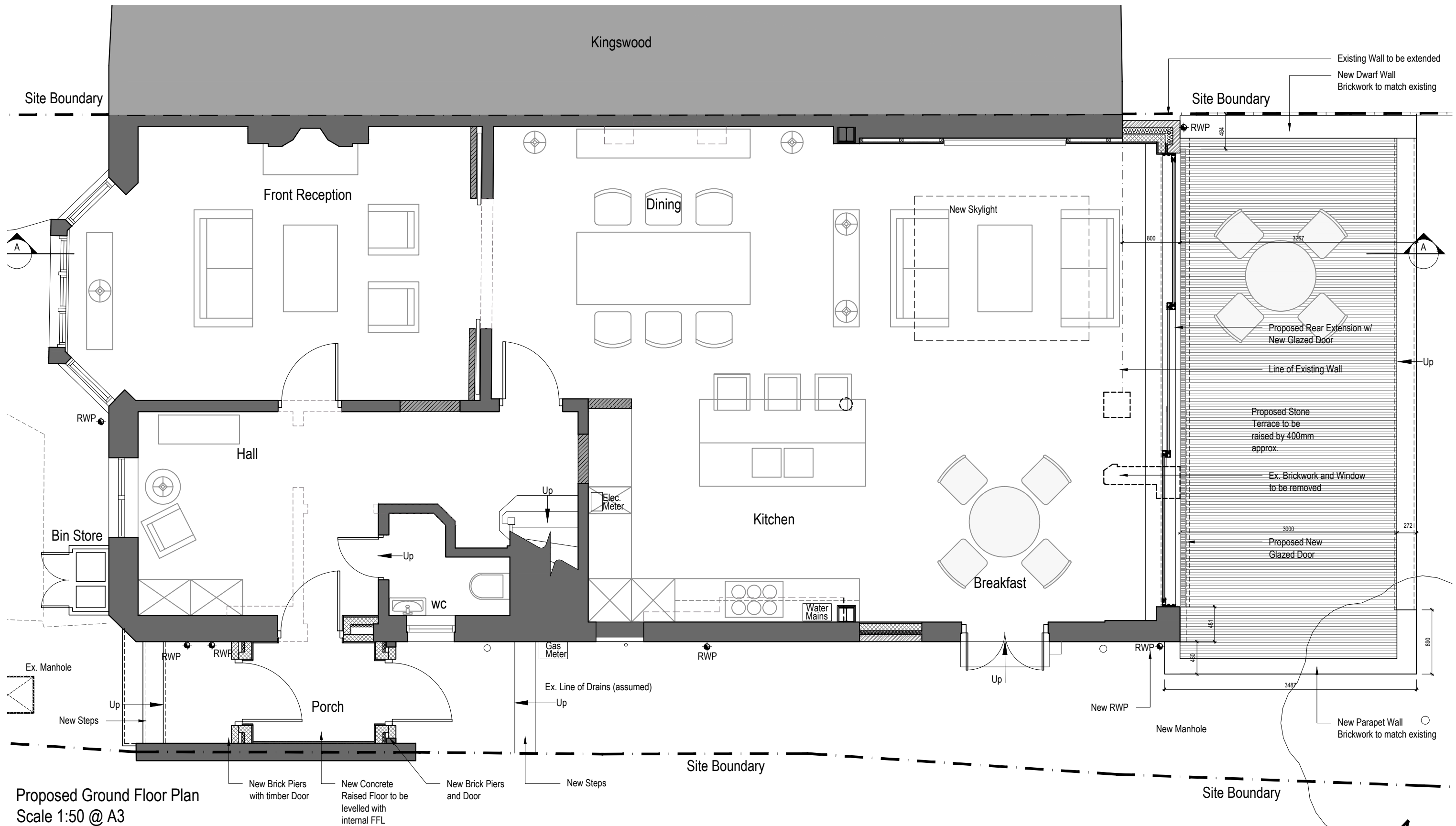
0295

Drawing no.

101

Revision

00



Proposed Ground Floor Plan
Scale 1:50 @ A3

Issued For	PLANNING
General Notes:	THIS DRAWING HAS BEEN PREPARED BY DS DESIGN SOLUTIONS AND THE DATA CONTAINED HEREIN MAY BE USED OR REPRODUCED ONLY WITH DS DESIGN SOLUTIONS' APPROVAL.

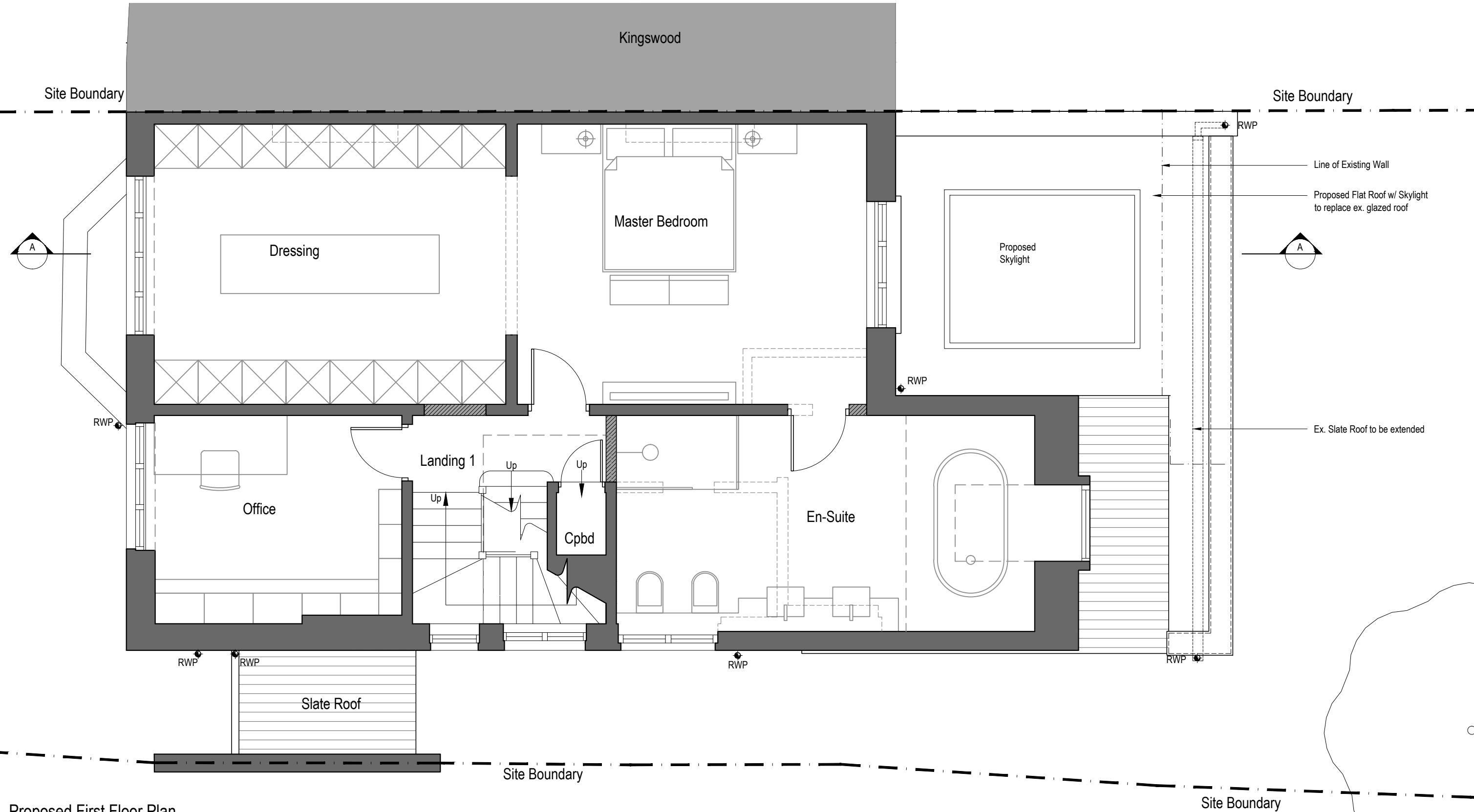
Rev.	Description	Date	Signed	Checked

Key:	Existing Walls to be Retained
	Proposed New Walls
	Walls To Be Demolished

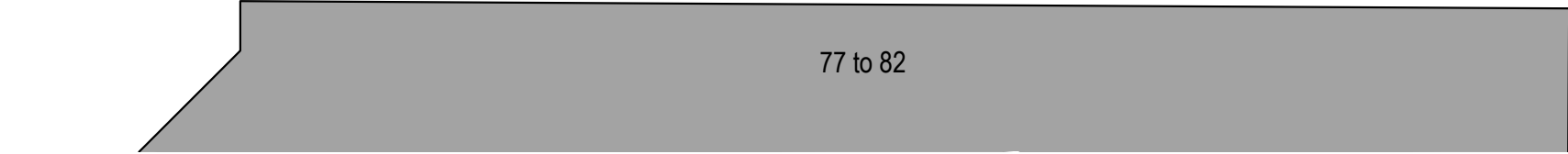
--

Scale	Date	Drawn by	Checked by
1:50@A3	Sep 2014	MEG	DS
Drawing Title	Proposed Ground Floor Plan		
Project	Epworth-Antrim Road NW3		

 <div>561 Finchley Road London NW3 7BJ Phone 020 7433 3939 Fax 020 7794 4279 design solutions www.DesignSolutionsUK.com</div>		
Project no.	Drawing no.	Revision
0295	110	00



Proposed First Floor Plan
Scale 1:50 @ A3



Issued For
PLANNING

General Notes:
THIS DRAWING HAS BEEN PREPARED BY DS DESIGN SOLUTIONS AND THE DATA CONTAINED HEREIN MAY BE USED OR REPRODUCED ONLY WITH DS DESIGN SOLUTIONS' APPROVAL.

Rev.	Description	Date	Signed	Checked

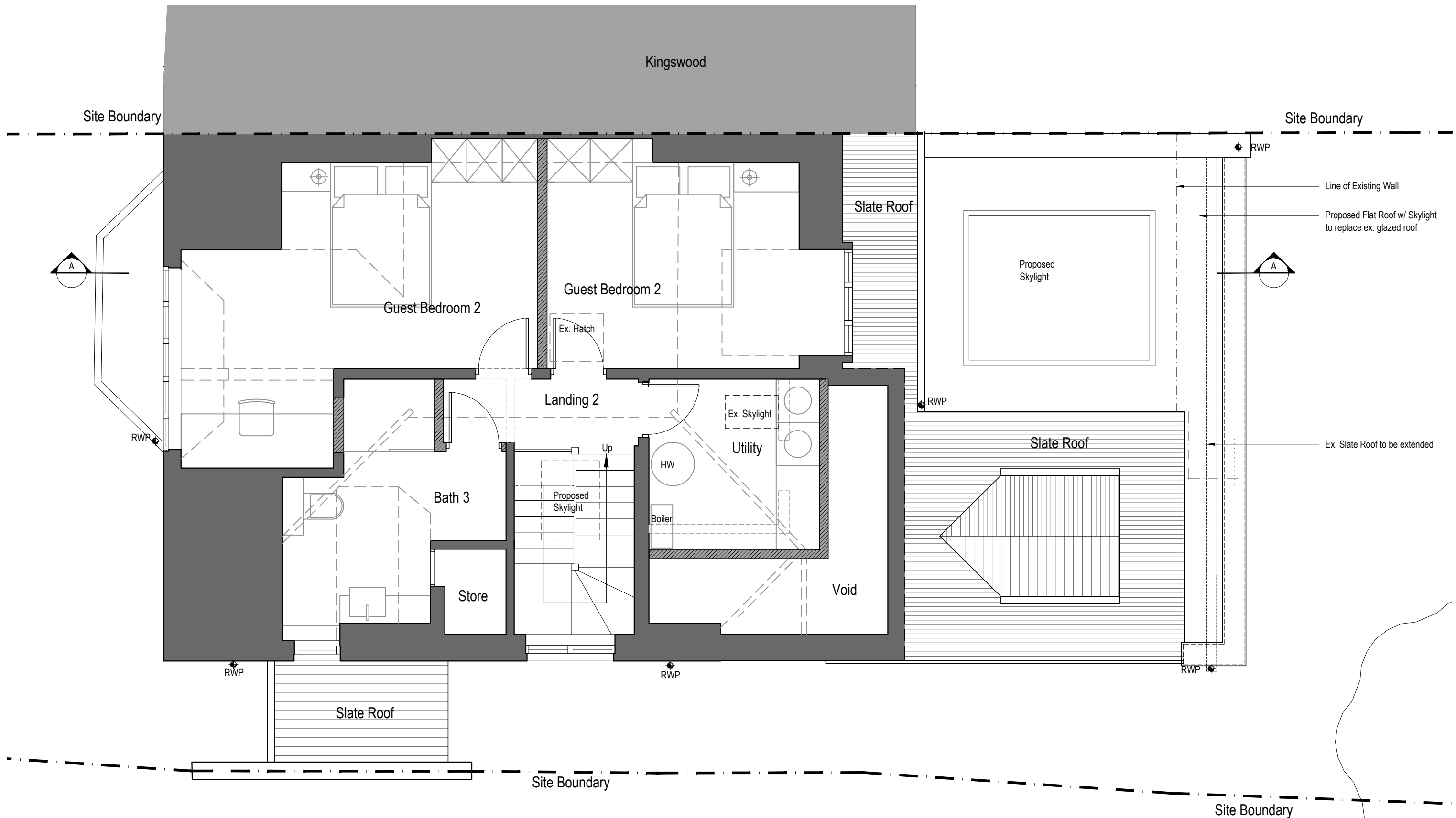
- Key:
- Existing Walls to be Retained
 - Proposed New Walls
 - Walls To Be Demolished

Scale 1:50@A3	Date Sep 2014	Drawn by MEG	Checked by DS
Drawing Title Proposed First Floor Plan			
Project Epworth-Antrim Road NW3			



561 Finchley Road
London NW3 7BJ
Phone 020 7433 3939
Fax 020 7794 4279
design solutions www.DesignSolutionsUK.com

Project no. 0295	Drawing no. 111	Revision 00
---------------------	--------------------	----------------



Proposed Second Floor Plan
Scale 1:50 @ A3


Issued For	PLANNING
General Notes:	THIS DRAWING HAS BEEN PREPARED BY DS DESIGN SOLUTIONS AND THE DATA CONTAINED HEREIN MAY BE USED OR REPRODUCED ONLY WITH DS DESIGN SOLUTIONS' APPROVAL.

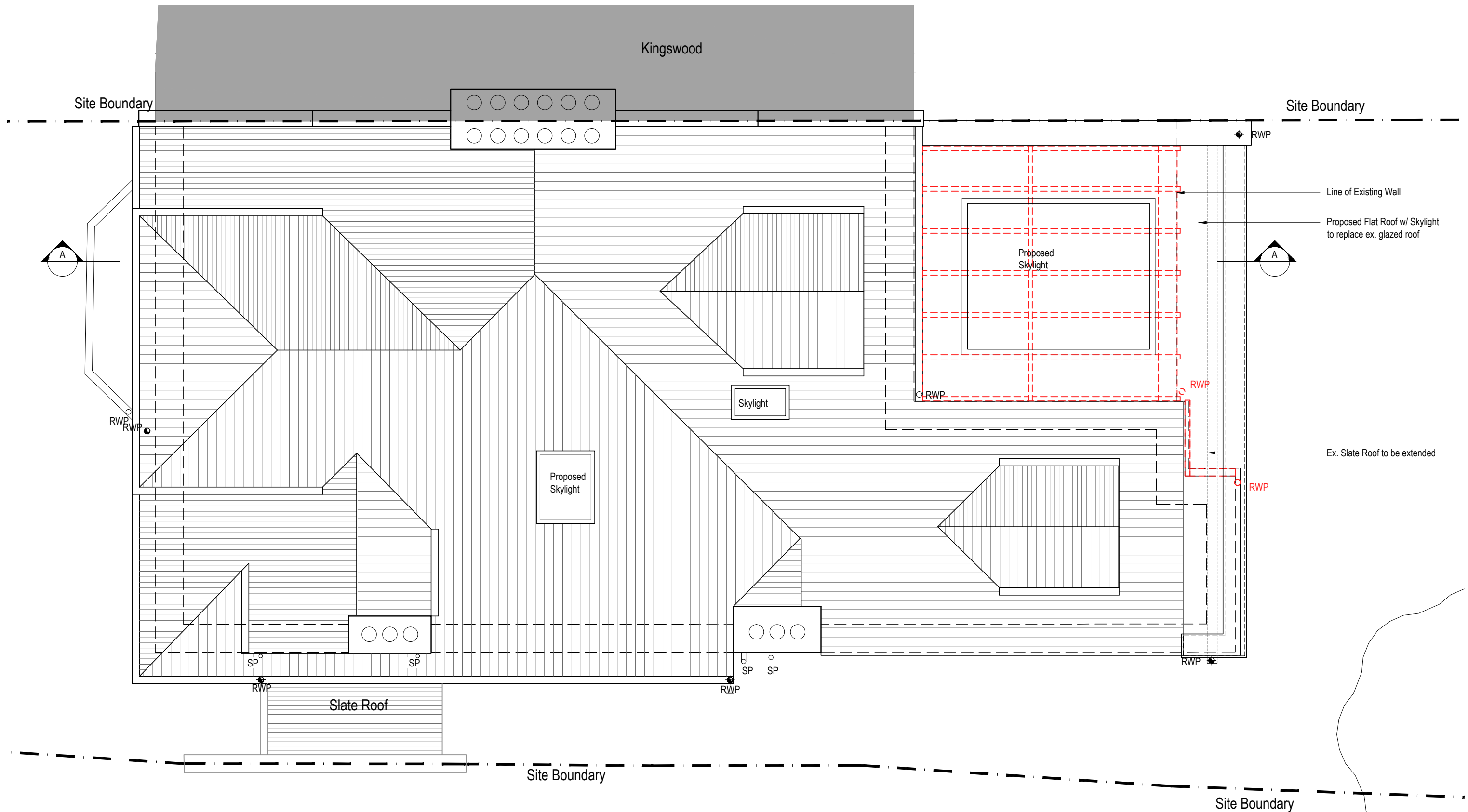
Rev.	Description	Date	Signed	Checked

Key:	Existing Walls to be Retained
Proposed New Walls	Walls To Be Demolished

--

Scale	Date	Drawn by	Checked by
1:50@A3	Sep 2014	MEG	DS
Drawing Title	Proposed Second Floor Plan		
Project	Epworth-Antrim Road NW3		

 <div>561 Finchley Road London NW3 7BJ Phone 020 7433 3939 Fax 020 7794 4279 www.DesignSolutionsUK.com</div>		
Project no.	Drawing no.	Revision
0295	112	00



Proposed Roof Plan
Scale 1:50 @ A3

77 to 82

Issued For	PLANNING
General Notes:	THIS DRAWING HAS BEEN PREPARED BY DS DESIGN SOLUTIONS AND THE DATA CONTAINED HEREIN MAY BE USED OR REPRODUCED ONLY WITH DS DESIGN SOLUTIONS' APPROVAL.

Rev.	Description	Date	Signed	Checked

--

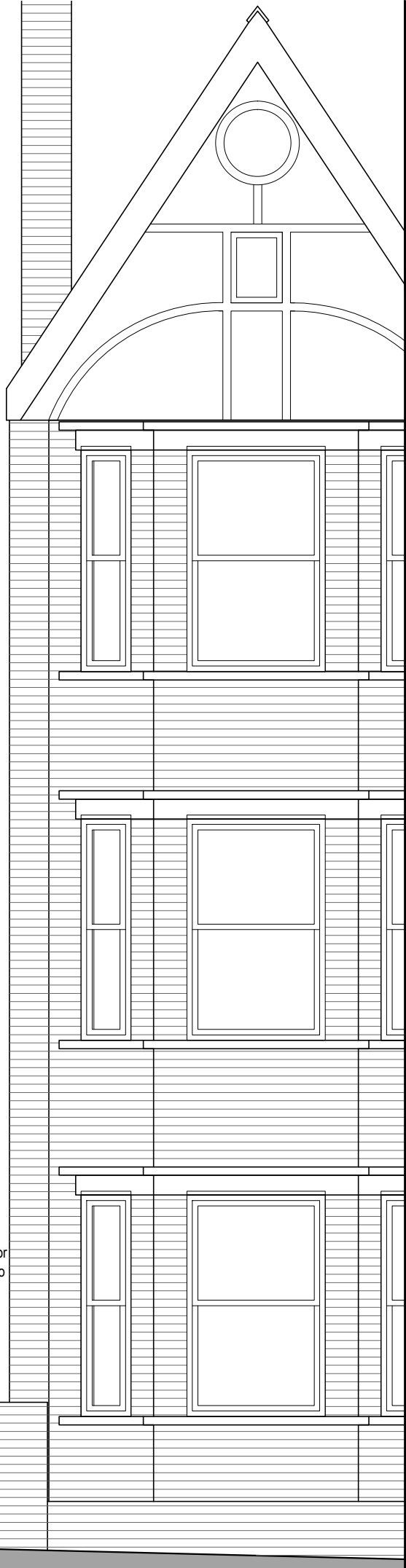
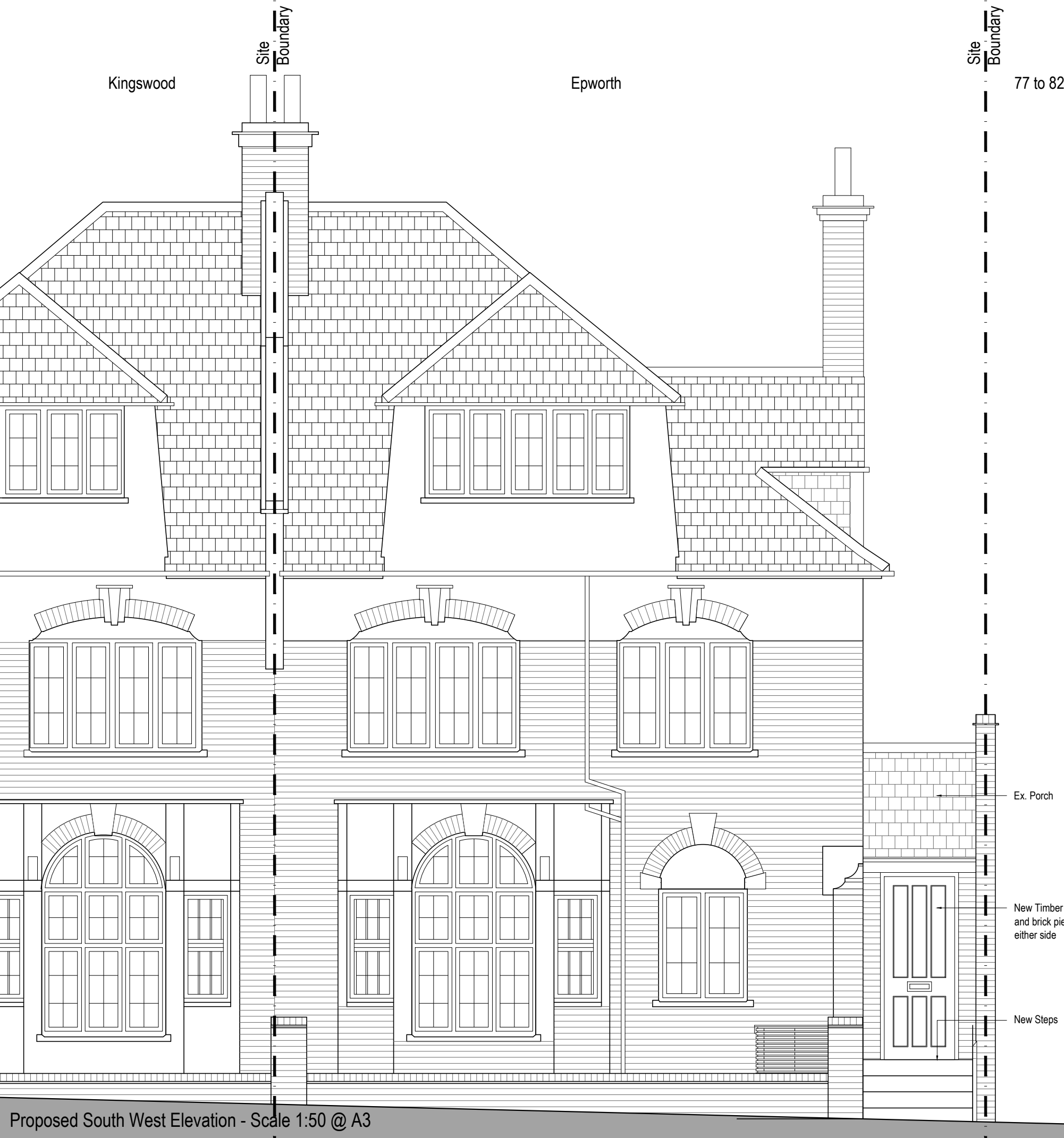
--

Scale	Date	Drawn by	Checked by
1:50@A3	Sep 2014	MEG	DS
Drawing Title			
Proposed Roof Plan			
Project			
Epworth-Antrim Road NW3			

Project no.			Drawing no.		Revision
0295			013		00



561 Finchley Road
London NW3 7BJ
Phone 020 7433 3939
Fax 020 7794 4279
design solutions www.DesignSolutionsUK.com



Notes:
1. Do not scale drawings
2. All dimensional discrepancies to be reported to architect
3. The contractor must check all dimensions on site before construction / fabrication

THIS DRAWING HAS BEEN PREPARED BY
DS DESIGN SOLUTIONS AND THE DATA CONTAINED
HEREIN MAY BE USED OR REPRODUCED ONLY
WITH DS DESIGN SOLUTIONS' APPROVAL.

Notes

Materials:

1. London Stock Bricks w/ Red Clay Coinage Bricks
2. Red Clay Bricks
3. White Render
4. Dark Grey Slates w/ Terracotta Ridge Tiles
5. White Painted Timber Frames
6. Terracotta Chimney Pots
7. Metal Grey Door Frames

All existing timber frame windows to be replace with similar timber frame types with double glazed units. Frame details to match existing

All new glazed doors and windows to have double units

Rev.	Description	Date	Checked

Issued For
PLANNING

Project
**Epworth
Antrim Road NW3**

Drawing Title
Proposed South West Elevation

DS
design solutions
561 Finchley Road
London NW3 7BJ
Phone 020 7433 3939
Fax 020 7794 4279
www.DesignSolutionsUK.com

North	Scale 1:50@ A3	Drawn by MEG
	Date Sep 2014	Checked by DS
Project no. 0295	Drawing no. 120	Revision 00



Proposed South East Elevation
Scale 1:100 @ A3

Notes:
1. Do not scale drawings
2. All dimensional discrepancies to be reported to architect
3. The contractor must check all dimensions on site before construction / fabrication

THIS DRAWING HAS BEEN PREPARED BY
DS DESIGN SOLUTIONS AND THE DATA CONTAINED
HEREIN MAY BE USED OR REPRODUCED ONLY
WITH DS DESIGN SOLUTIONS' APPROVAL.

Notes

Materials:

1. London Stock Bricks w/ Red Clay Coinage Bricks
2. Red Clay Bricks
3. White Render
4. Dark Grey Slates w/ Terracotta Ridge Tiles
5. White Painted Timber Frames
6. Terracotta Chimney Pots
7. Metal Grey Door Frames

All existing timber frame windows to be replace with similar timber frame types with double glazed units. Frame details to match existing

All new glazed doors and windows to have double units

Rev.	Description	Date	Checked
------	-------------	------	---------

Issued For
PLANNING

Project
**Epworth
Antrim Road NW3**

Drawing Title
Proposed South East Elevation

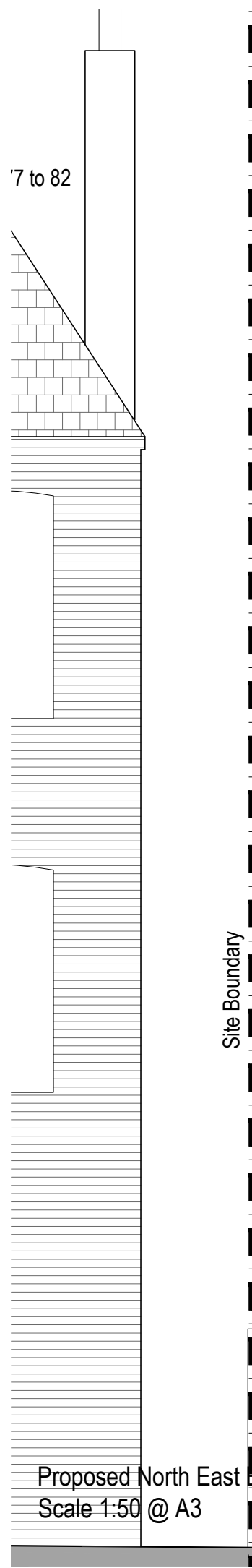


561 Finchley Road
London NW3 7BJ
Phone 020 7433 3939
Fax 020 7794 4279

design solutions www.DesignSolutionsUK.com

North	Scale 1:50@ A3	Drawn by MEG
	Date Sep 2014	Checked by DS
Project no. 0295	Drawing no. 121	Revision 00

'7 to 82



Site Boundary

Epworth

Kingswood



Proposed North East Elevation
Scale 1:50 @ A3

Notes:
1. Do not scale drawings
2. All dimensional discrepancies to be reported to architect
3. The contractor must check all dimensions on site before construction / fabrication

THIS DRAWING HAS BEEN PREPARED BY
DS DESIGN SOLUTIONS AND THE DATA CONTAINED
HEREIN MAY BE USED OR REPRODUCED ONLY
WITH DS DESIGN SOLUTIONS' APPROVAL.

Notes

Materials:

1. London Stock Bricks w/ Red Clay Coinage Bricks
2. Red Clay Bricks
3. White Render
4. Dark Grey Slates w/ Terracotta Ridge Tiles
5. White Painted Timber Frames
6. Terracotta Chimney Pots
7. Metal Grey Door Frames

All existing timber frame windows to be replace with similar timber frame types with double glazed units. Frame details to match existing

All new glazed doors and windows to have double units

Rev.	Description	Date	Checked

Issued For
PLANNING

Project

Epworth
Antrim Road NW3

Drawing Title

Proposed North East Elevation



561 Finchley Road
London NW3 7BJ
Phone 020 7433 3939
Fax 020 7794 4279

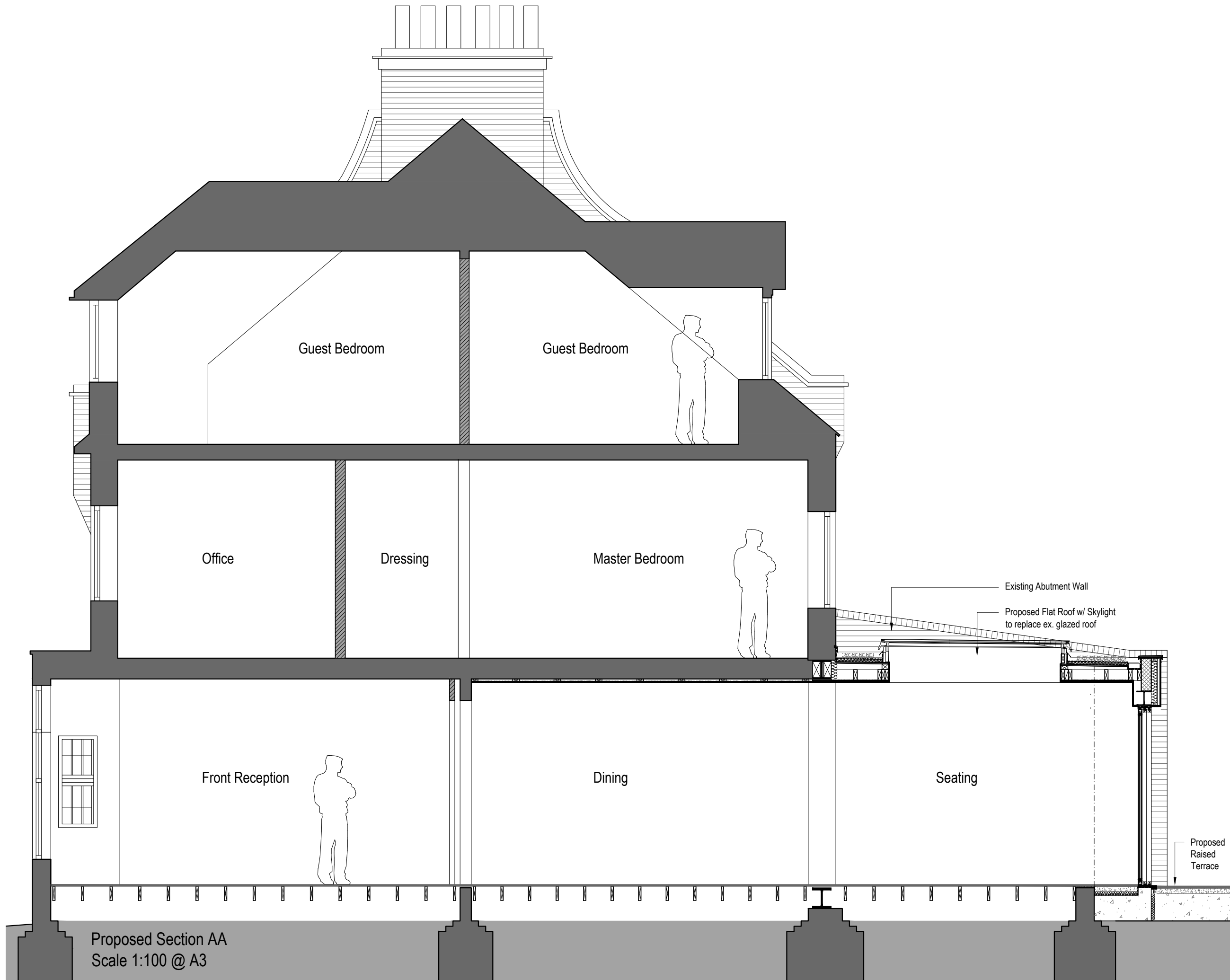
design solutions www.DesignSolutionsUK.com

North	Scale 1:50@ A3	Drawn by MEG
	Date Sep 2014	Checked by DS
Project no. 0295	Drawing no. 122	Revision 00

Painted White Fascia

Proposed Rear Extension
w/ New Double Glazed
Sliding Doors w/ Metal Grey
Frames

Proposed Dwarf Wall,
Brickwork to match existing



Notes:

1. Do not scale drawings
2. All dimensional discrepancies to be reported to architect
3. The contractor must check all dimensions on site before construction / fabrication

THIS DRAWING HAS BEEN PREPARED BY
DS DESIGN SOLUTIONS AND THE DATA CONTAINED
HEREIN MAY BE USED OR REPRODUCED ONLY
WITH DS DESIGN SOLUTIONS' APPROVAL.

Notes

Rev.	Description	Date	Checked

Issued For
PLANNING

Project
**Epworth
Antrim Road NW3**

Drawing Title
Proposed Section AA



design solutions

561 Finchley Road
London NW3 7BJ
Phone 020 7433 3939
Fax 020 7794 4279
www.DesignSolutionsUK.com

North	Scale 1:50@ A3	Drawn by MEG
	Date Sep 2014	Checked by DS
Project no. 0295	Drawing no. 130	Revision 00