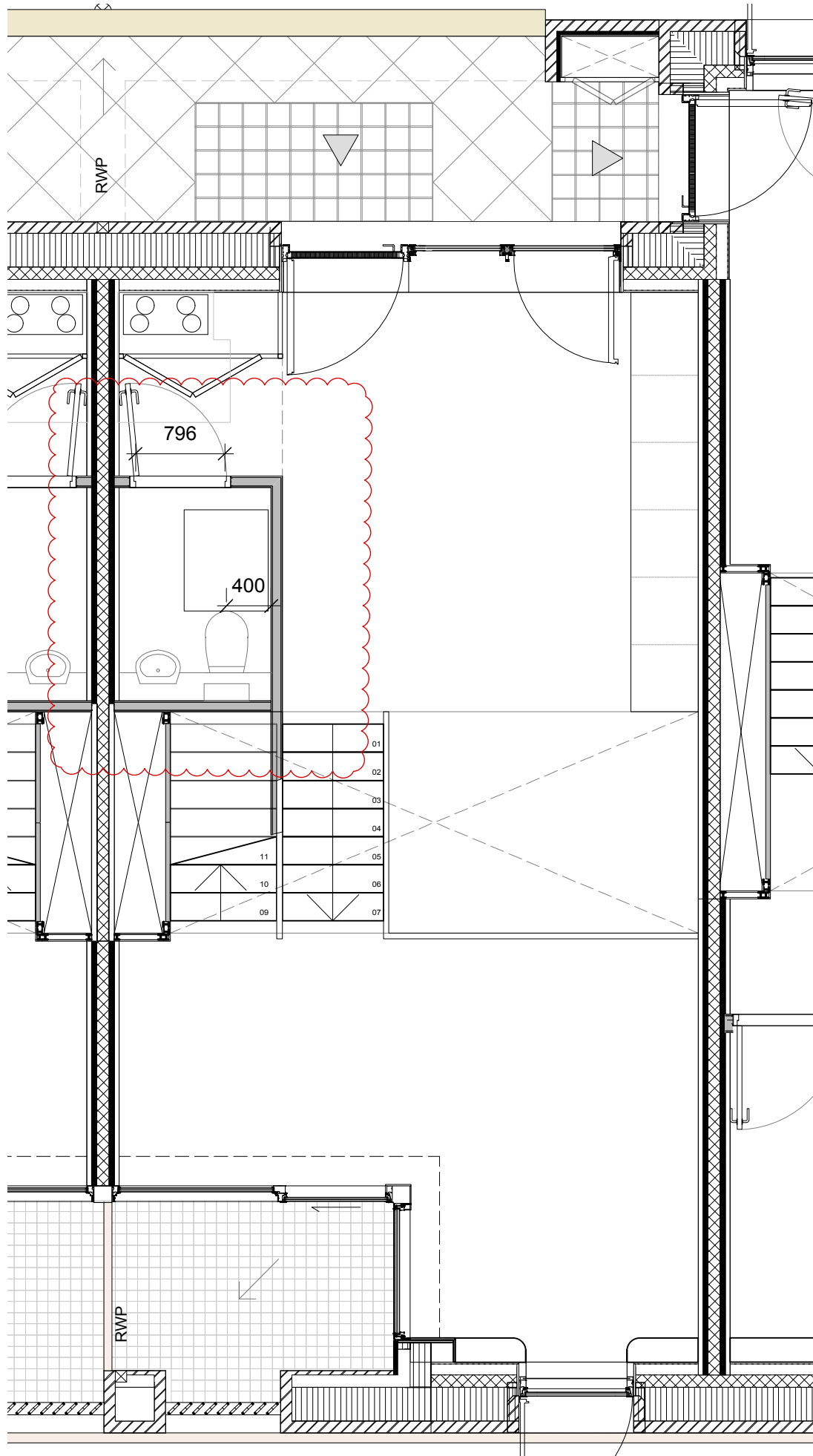
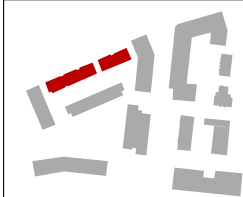


Fourth Floor plan, Typical 2b3p



Fourth Floor plan, Typical 1b2p

- GENERAL NOTES:
1. Measurements are based on metric system.
 2. All levels are in meters to Principal Datum (PD) unless noted otherwise.
 3. Do not scale off drawing and CAD file.
 4. All shown figure dimensions are to be followed.
 5. Do not use for construction unless expressly permitted.
 6. This drawing shows design intent only.
 7. All shopfabrication drawings to be issued to mae lp for review before construction.
 8. Contractor should verify all conditions, levels and dimensions on site and notify contract administrator of any variations from dimensions before construction and/or fabrication.
 9. Any discrepancies on this drawing should be reported to mae lp before proceeding to fabrication.
 10. Drawings to be read in conjunction with all relevant documents which include but are not limited to: AEC, Structures, shopfabrication drawings, fire, acoustics and CDM documents.
 11. This drawing is for information only. Please refer to relevant electronic documents.
 12. This drawing is for information only. Please refer to relevant electronic documents.
 13. This drawing is for information only. Please refer to relevant electronic documents.
 14. This drawing is for information only. Please refer to relevant electronic documents.
 15. This drawing is for information only. Please refer to relevant electronic documents.
 16. This drawing is for information only. Please refer to relevant electronic documents.
 17. All newly proposed thermal and sound insulation requirements are subject to U-Value and sound testing of existing walls, floor and roofs where applicable.
 18. All below ground buildings are indicative: refer to Civil/Landscape Architect drawings.
 19. Details to be reviewed against all relevant acoustic requirements, in line with Max Fordham CF5H Requirements Summary Sheet, and Peter Brett Associates Acoustic Report.
 20. All doors to be FD02 rated as a minimum requirement.
 21. Details to be reviewed against all relevant fire requirements and relevant documents.



Rev.	Date	Description
Client		
LB Camden		
Job Name		Job No.
Agar Grove		1423
Title		
Plot G LTH sample WC layouts		
Status		Scale
LTH rev		1:50 @ A3
Drawn By	Checked By	Date
MD	JH	04.11.14
Drawing No.	Revision	
1423_DWG_G_00_304	C	

mae

mae LLP Architects
1 Naoroji Street
London WC1X 0GB
t: +44 (0)20 7704 6060
f: +44 (0)20 7833 2473
e: office@mae-llp.co.uk