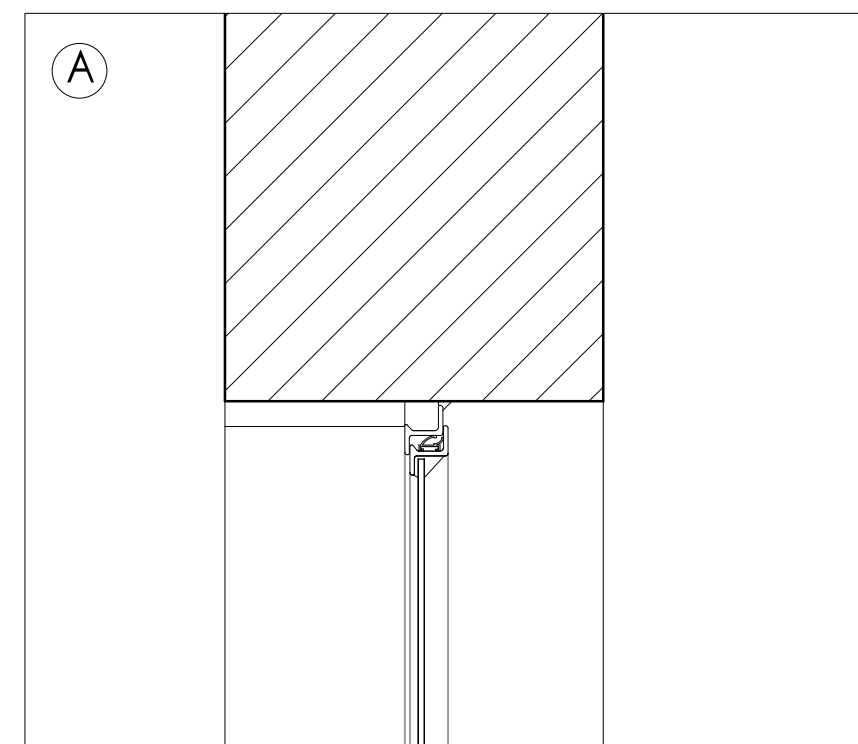
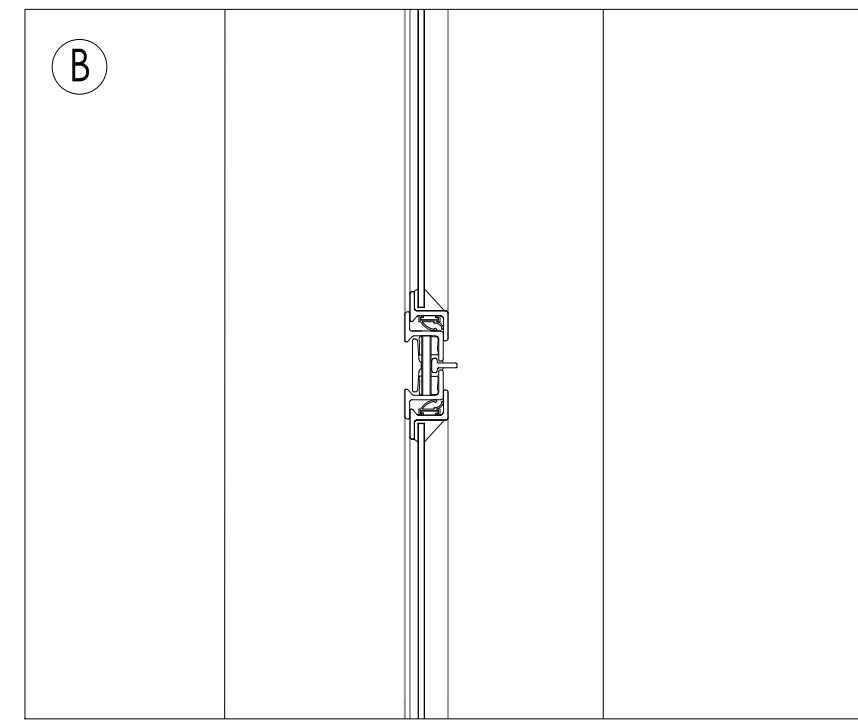


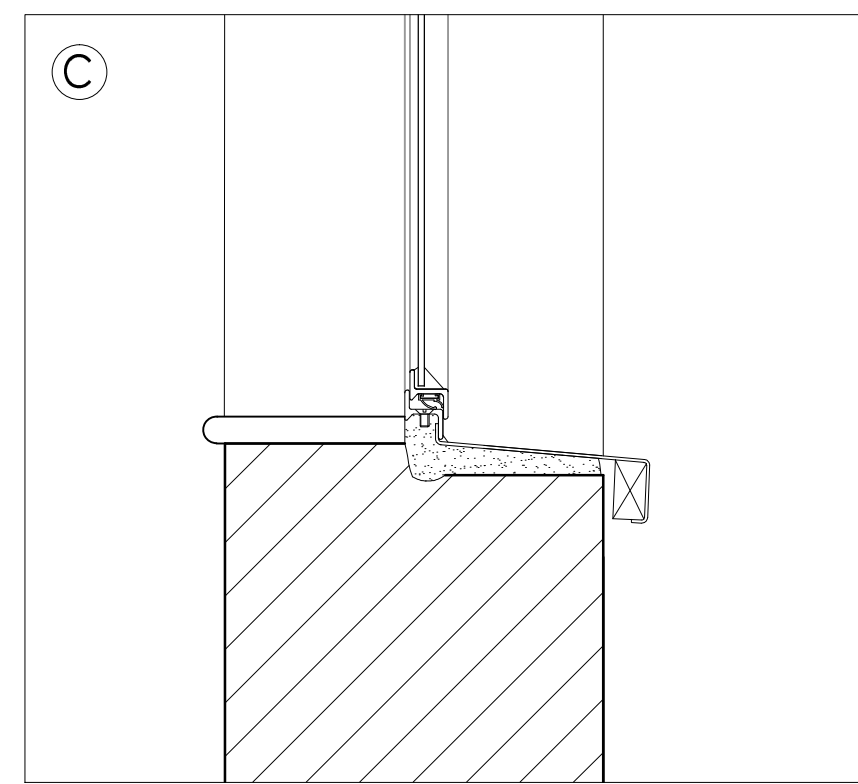
EXISTING WINDOW DETAILS



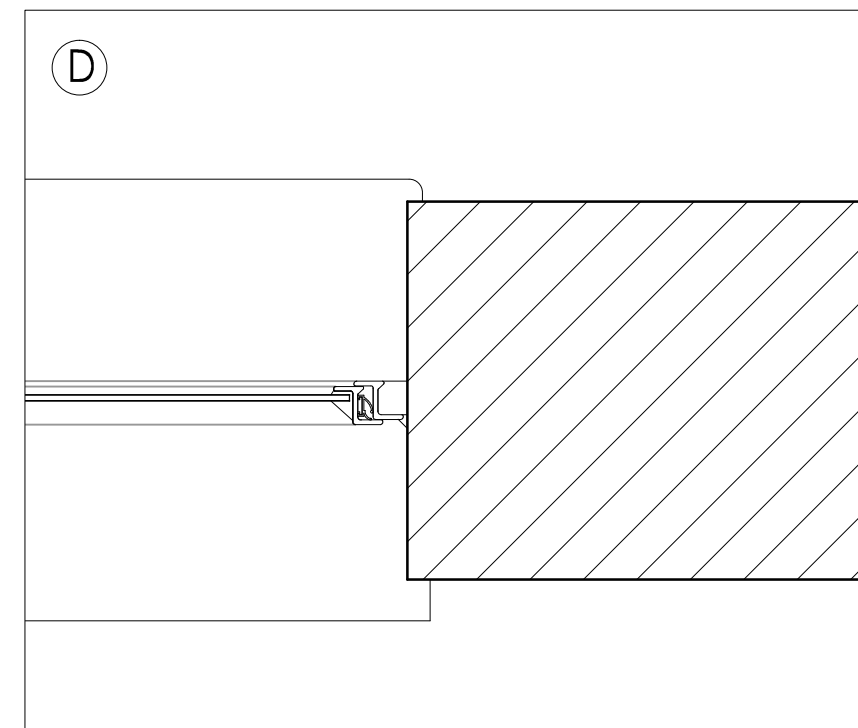
EXISTING TYPICAL WINDOW HEAD DETAIL



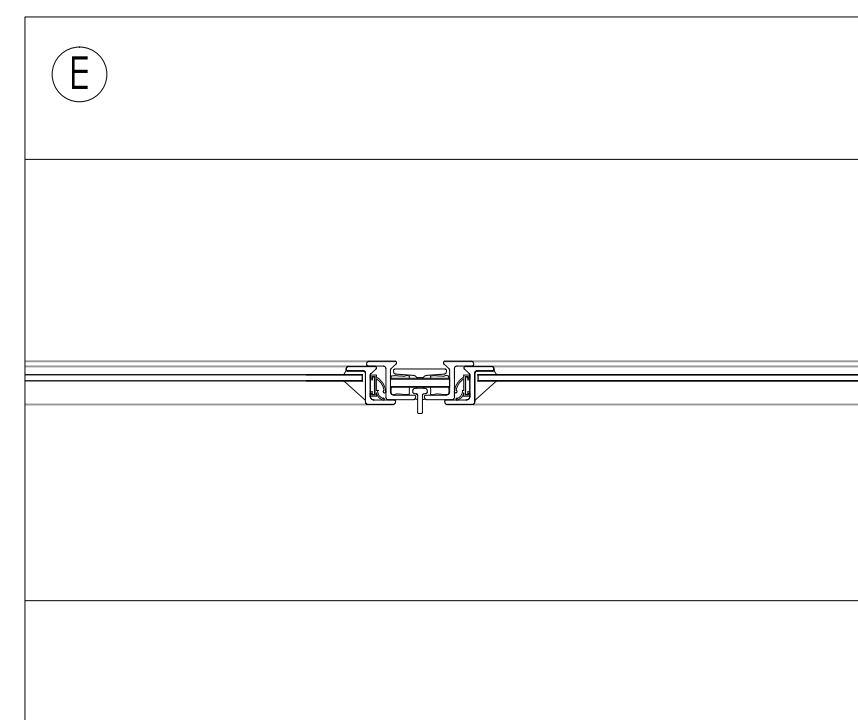
EXISTING TYPICAL TRANSOM DETAIL



EXISTING TYPICAL SILL DETAIL



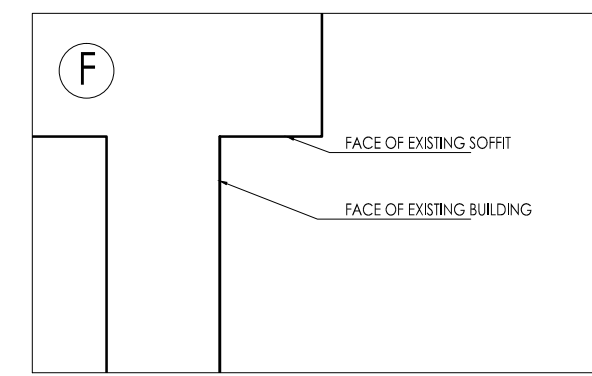
EXISTING TYPICAL JAMB DETAIL



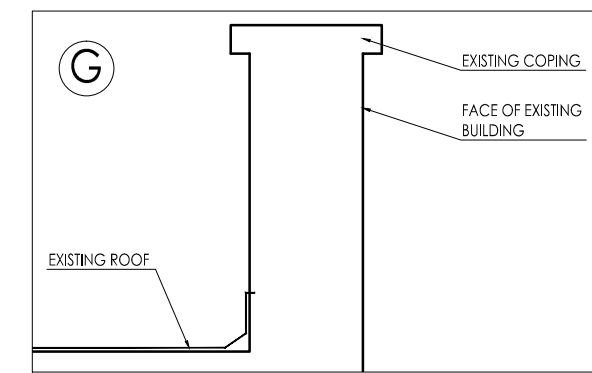
EXISTING TYPICAL MULLION DETAIL

SCALE 1:5 @ A1

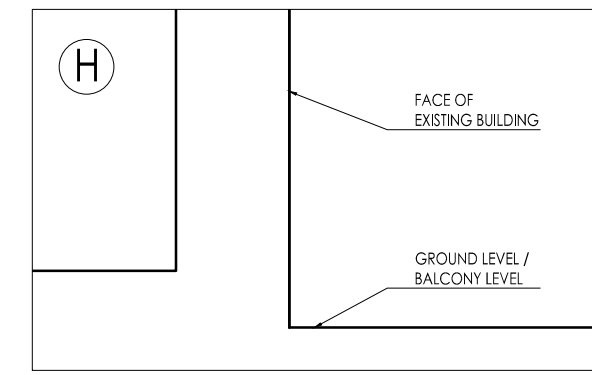
EXISTING WALL DETAILS



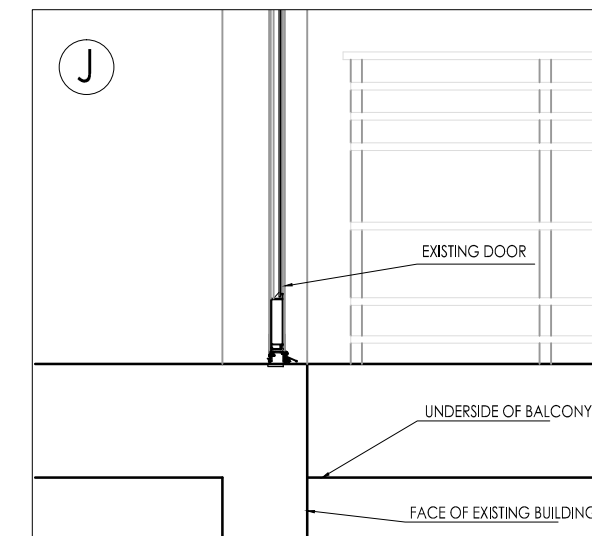
EXISTING EAVES DETAIL



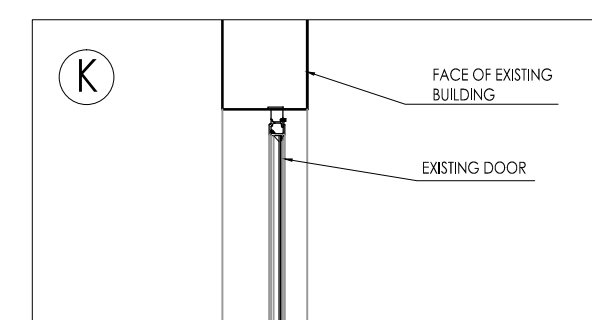
EXISTING PARAPET DETAIL



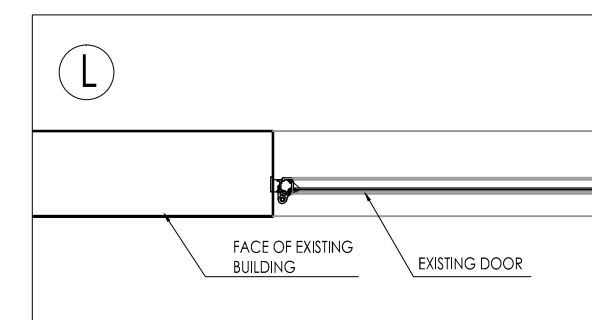
EXISTING BASE DETAIL



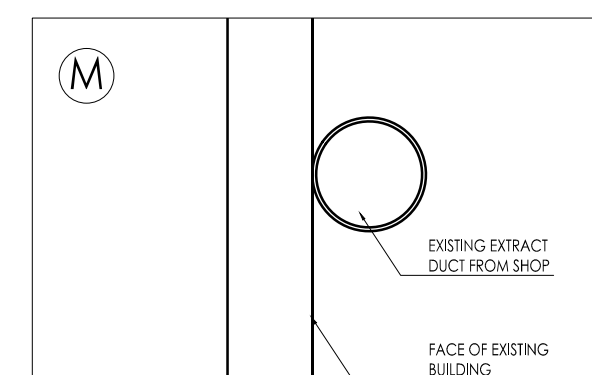
EXISTING BALCONY DETAIL



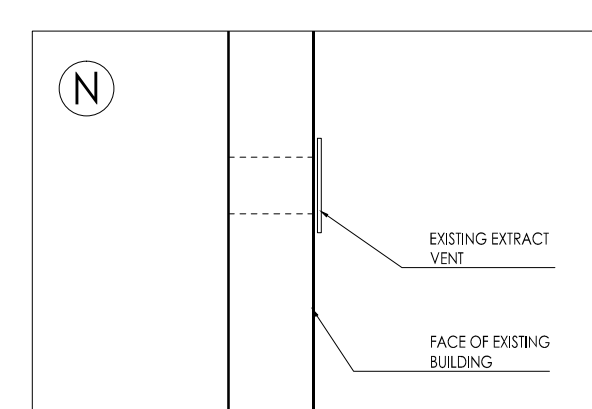
EXISTING DOOR HEAD DETAIL



EXISTING DOOR JAMB DETAIL



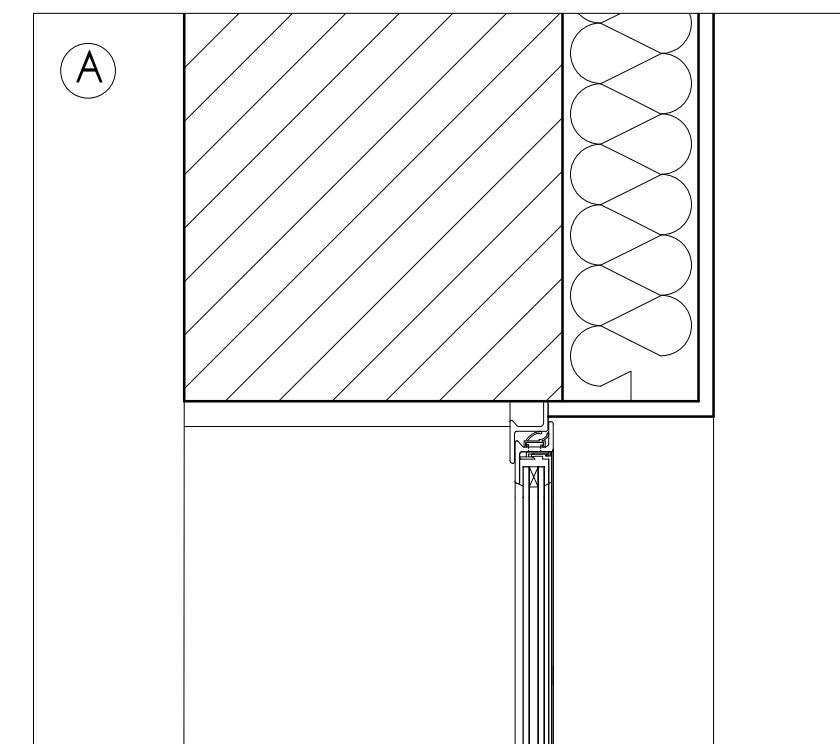
EXISTING EXTRACT DUCT FROM SHOP DETAIL



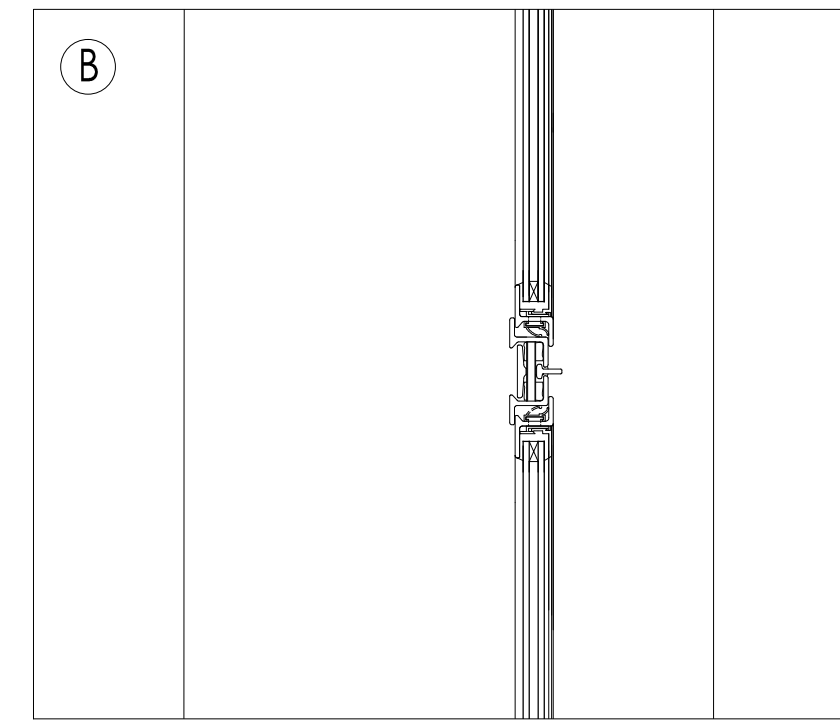
EXISTING EXTRACT VENT DETAIL

SCALE 1:20 @ A1

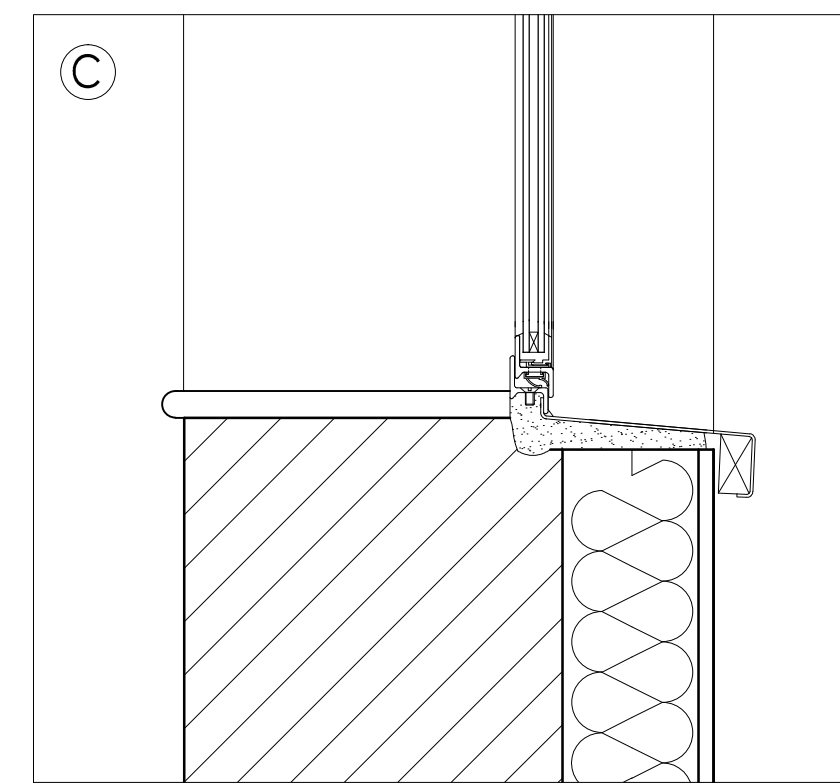
PROPOSED WINDOW DETAILS



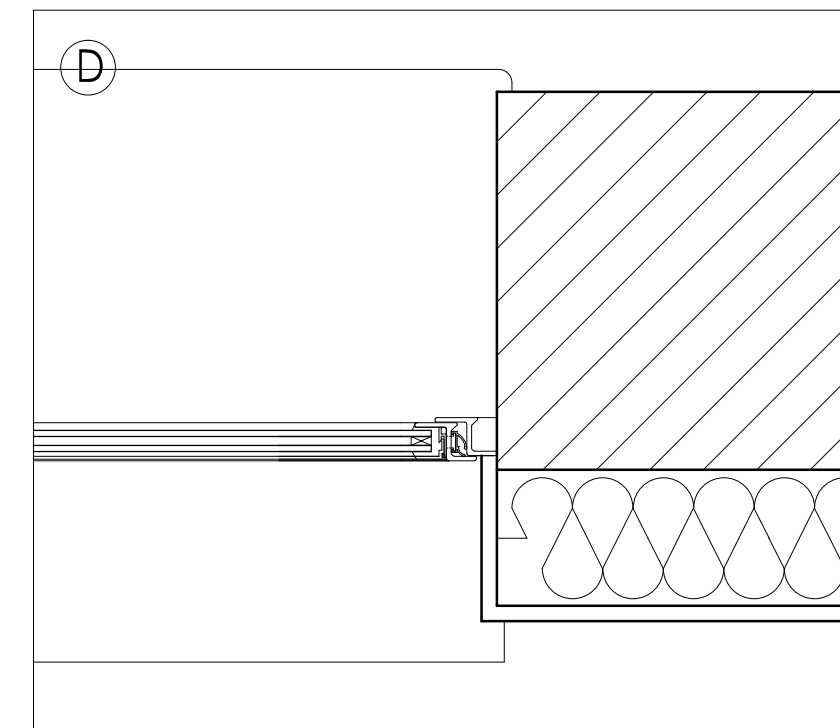
PROPOSED TYPICAL WINDOW HEAD DETAIL



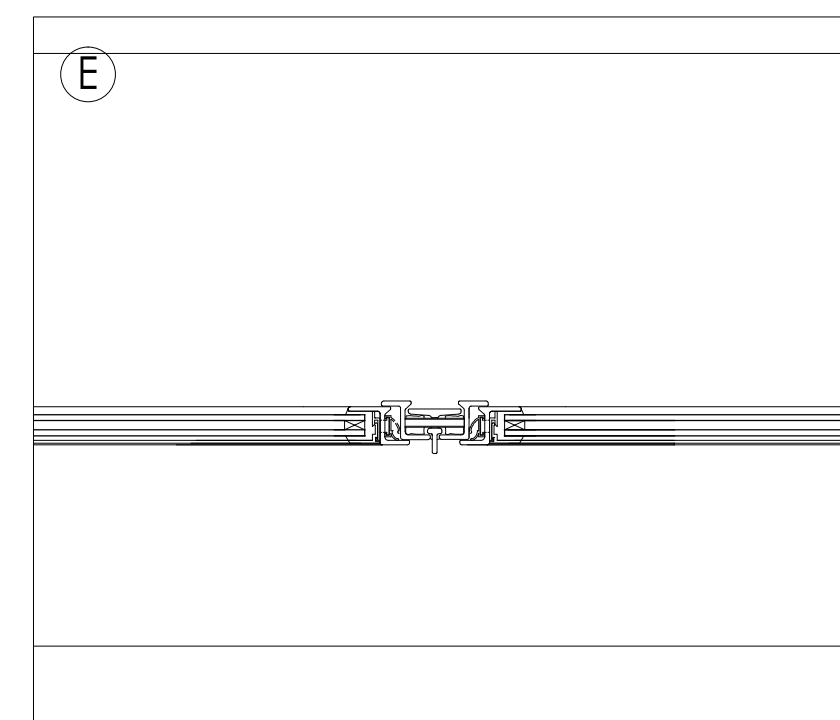
PROPOSED TYPICAL TRANSOM DETAIL



PROPOSED TYPICAL SILL DETAIL



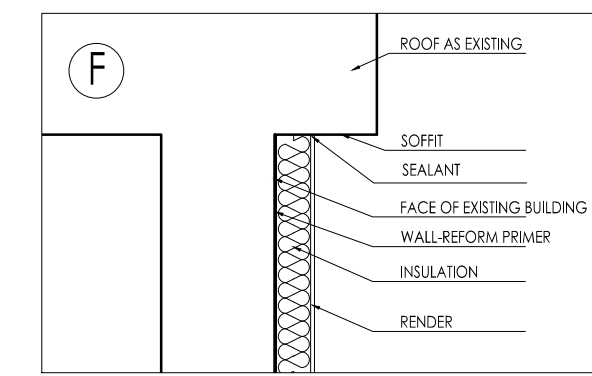
PROPOSED TYPICAL JAMB DETAIL



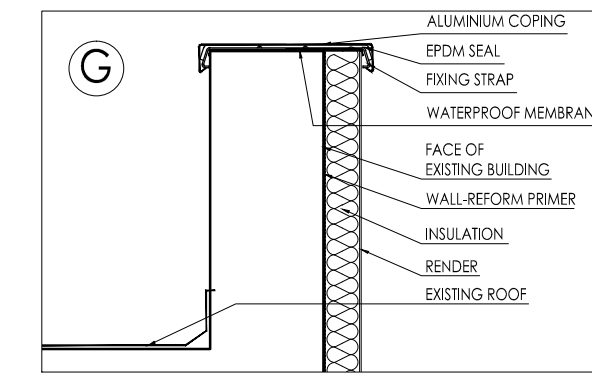
PROPOSED TYPICAL MULLION DETAIL

SCALE 1:5 @ A1

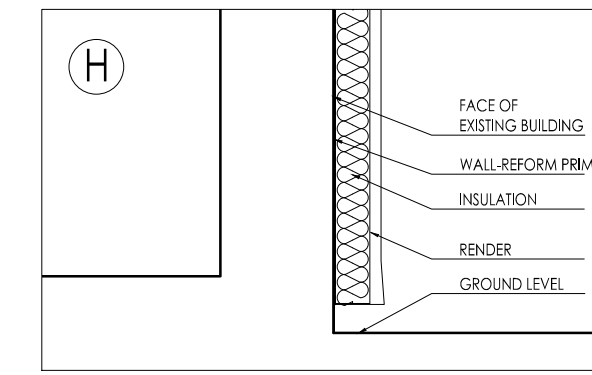
PROPOSED OVERCLADDING DETAILS



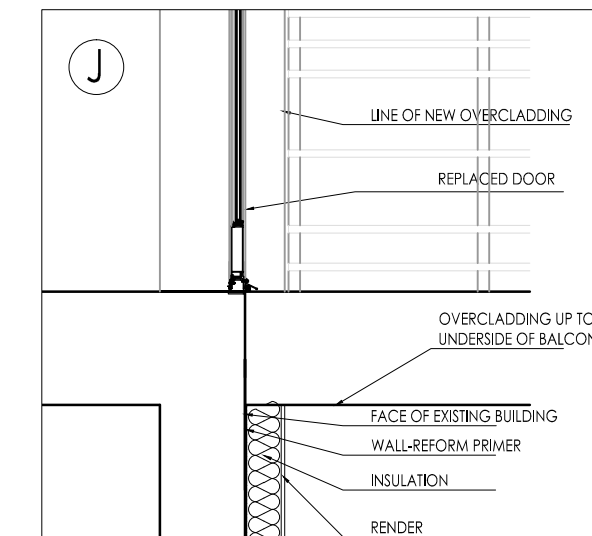
PROPOSED EAVES DETAIL



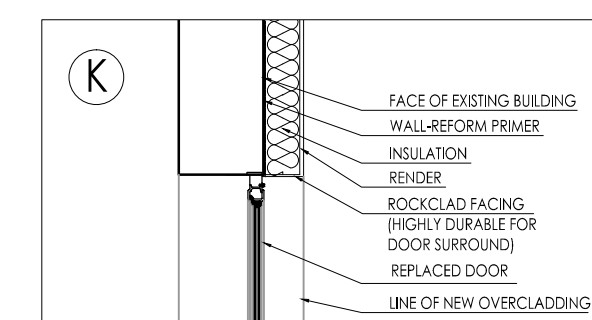
PROPOSED PARAPET DETAIL



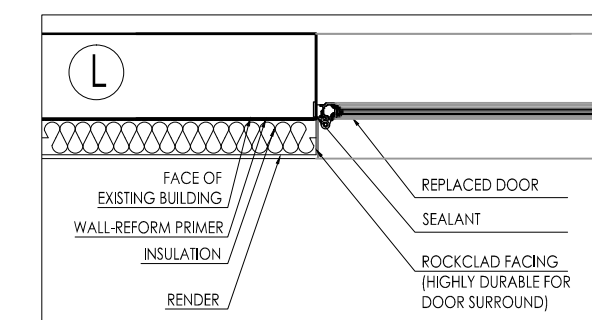
PROPOSED BASE DETAIL



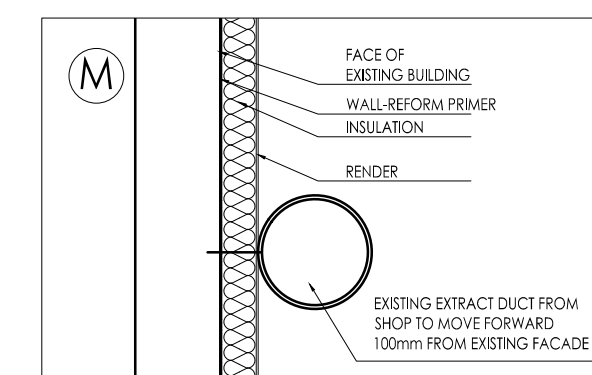
PROPOSED BALCONY DETAIL



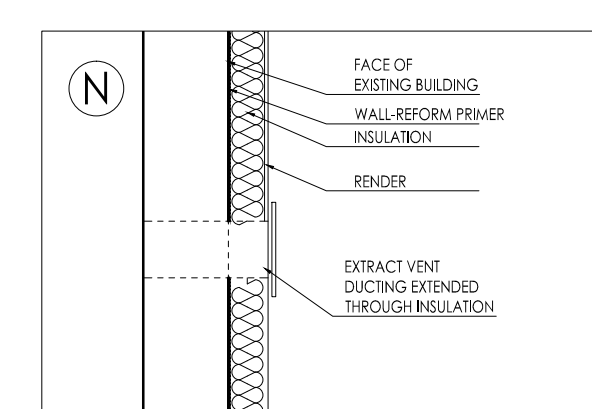
PROPOSED DOOR HEAD DETAIL



PROPOSED DOOR JAMB DETAIL



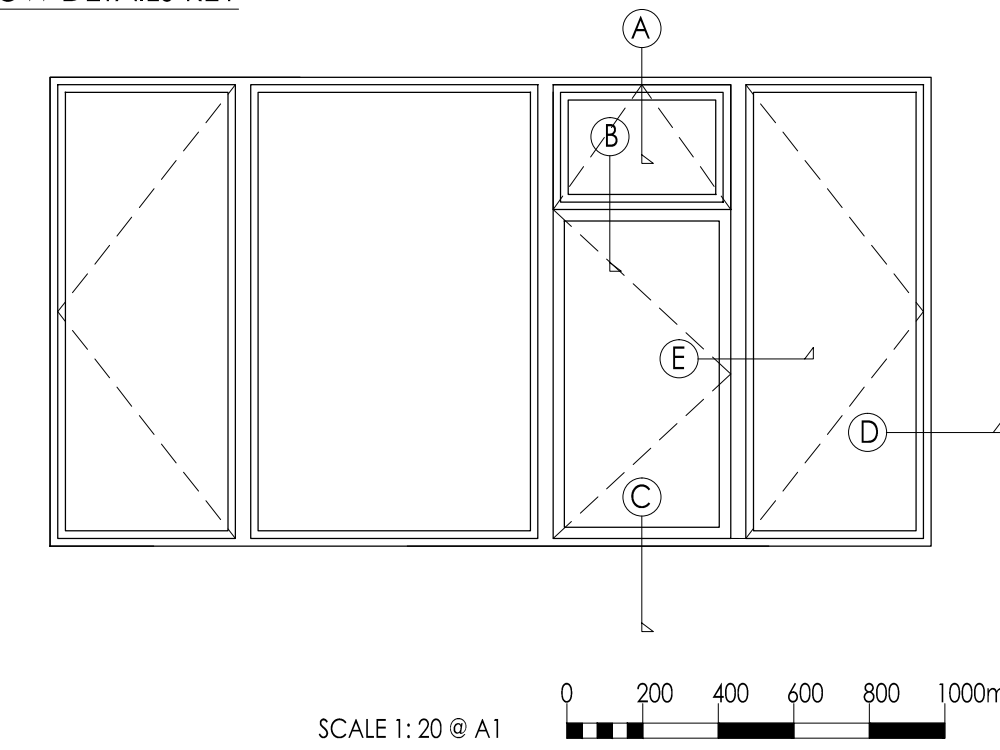
PROPOSED EXTRACT DUCT FROM SHOP DETAIL



PROPOSED EXTENDED EXTRACT VENT DETAIL

SCALE 1:20 @ A1

WINDOW DETAILS KEY



SCALE 1:20 @ A1

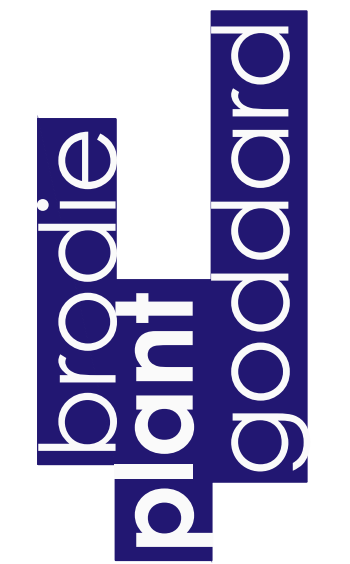
OVERCLADDING DETAILS KEY



Amendments

*

DO NOT SCALE FOR CONSTRUCTION



BUILDING SURVEYING
ARCHITECTURE
PROJECT MANAGEMENT
QUANTITY SURVEYING

HOLMBURY HOUSE
DORKING BUSINESS PARK
STATION ROAD DORKING
SURREY RH4 1HJ

T 01306 887070
F 01306 876716
admin@bpg.co.uk
www.bpg.co.uk

PROJECT
FLATS 1-16, KENT HOUSE,
FERDINAND ST., CHALK FARM,
NW1 8ET

CLIENT
ORIGIN HOUSING

DRAWN RMC DATE OCT '14
CHECKED RM

SCALE 1:5 @ A1 FOR PLANNING
1:20 @ A1

TITLE
TYPICAL WINDOW AND
OVERCLADDING DETAILS

DRAWING NO. 3649/PL10
REV *