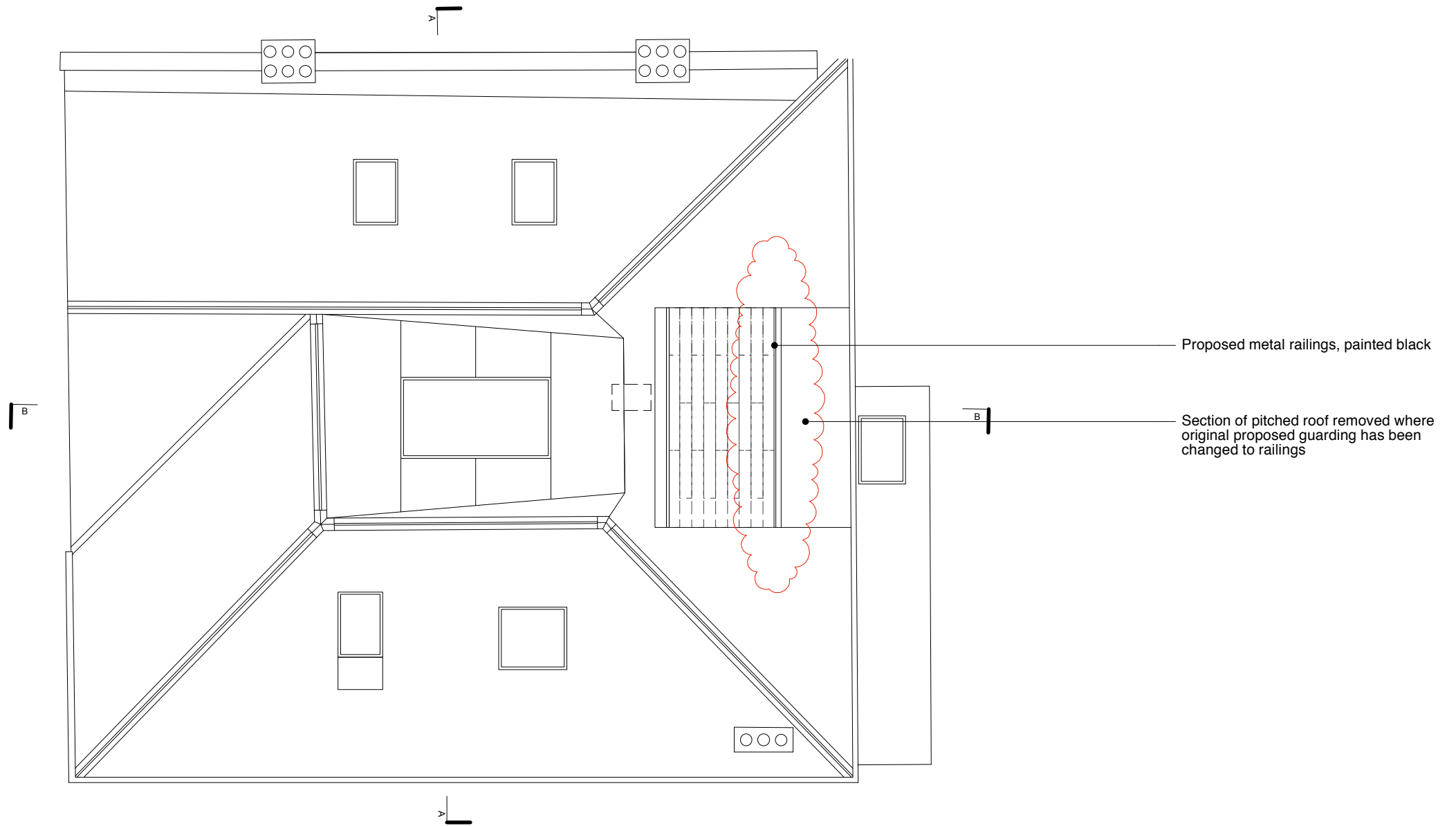


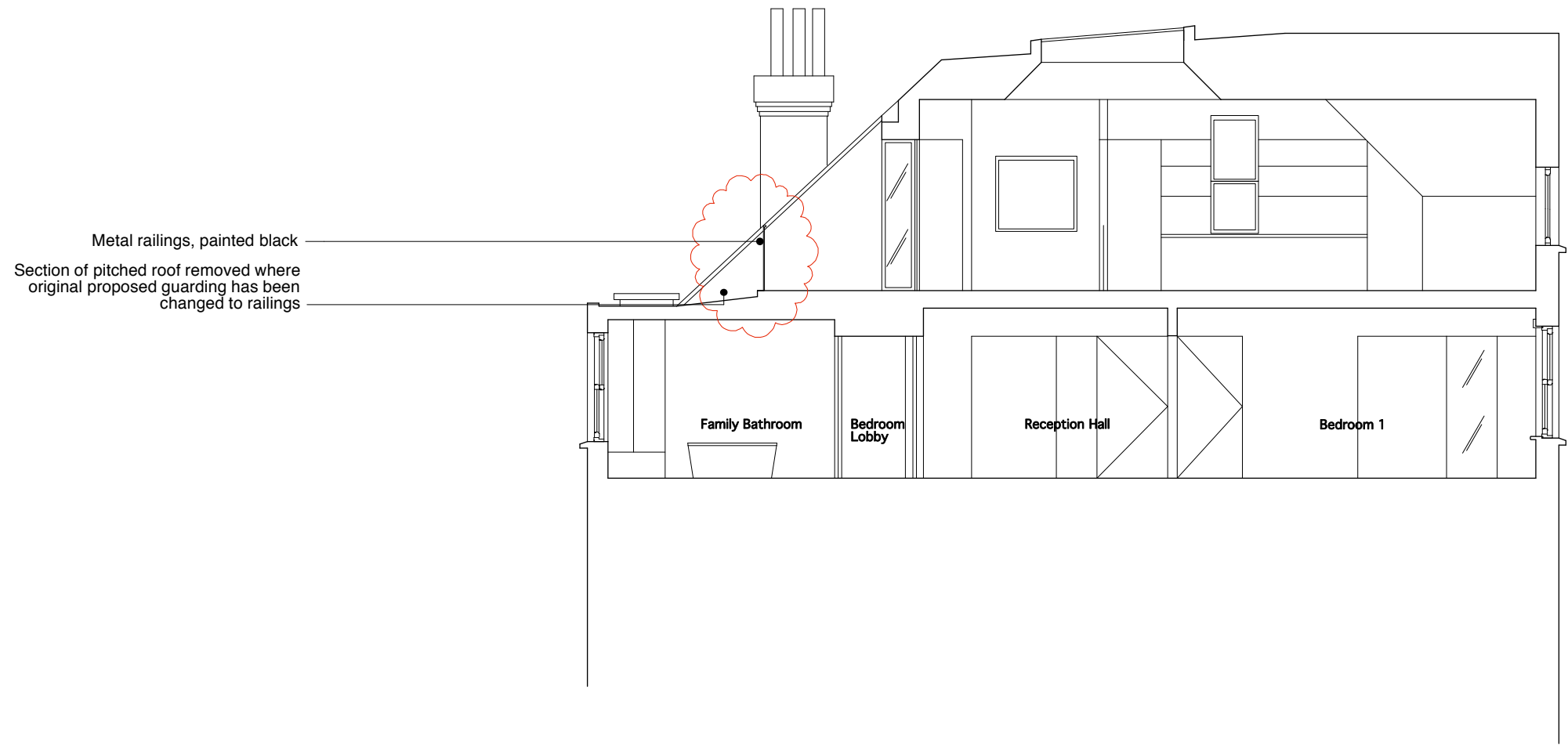
Notes:
Revisions as clouded
All other alterations as per registered drawings submitted for planning by David Scott Architects

Proposed Arrangements 3rd Floor Plan
WK Revision of DWG. NO. PRO_02A
WKS-141112-01
12b Wedderburn Road, London NW3 5QG
scale: 1:100 @ A3

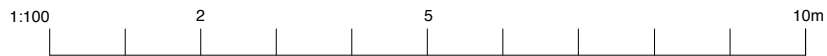


Notes:
Revisions as clouded
All other alterations as per registered drawings submitted for planning by David Scott Architects

Proposed Arrangements Roof Plan
WK Revision of DWG. NO. PRO_03A
WKS-141112-02
12b Wedderburn Road, London NW3 5QG
scale: 1:100 @ A3



Metal railings, painted black
Section of pitched roof removed where
original proposed guarding has been
changed to railings

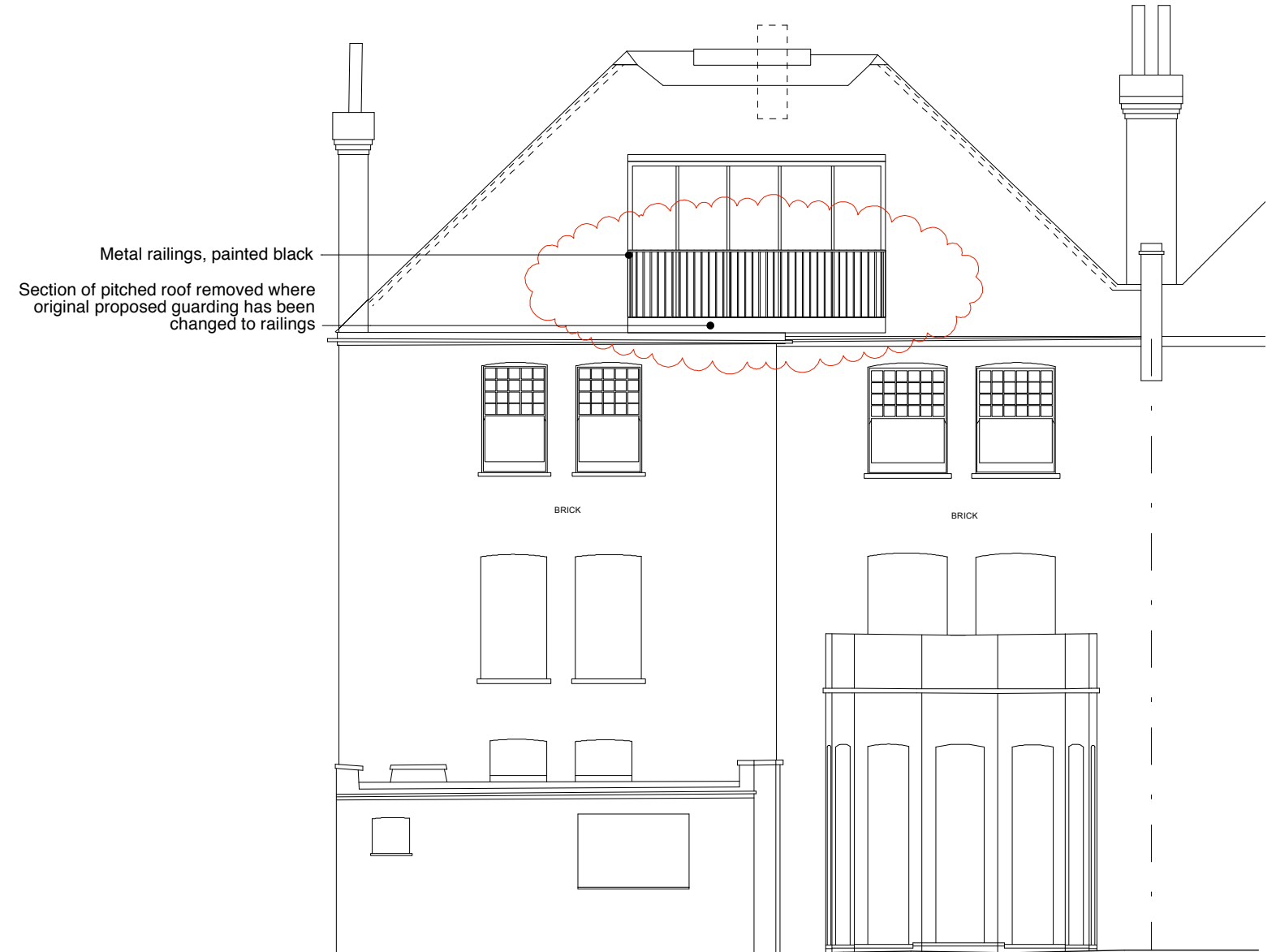


Notes:
Revisions as clouded
All other alterations as per registered drawings submitted for planning by David Scott Architects

Proposed Arrangements Section B-B
WK Revision of DWG. NO. PRO_04A
WKSK-141112-03
12b Wedderburn Road, London NW3 5QG
scale: 1:100 @ A3



Front Elevation

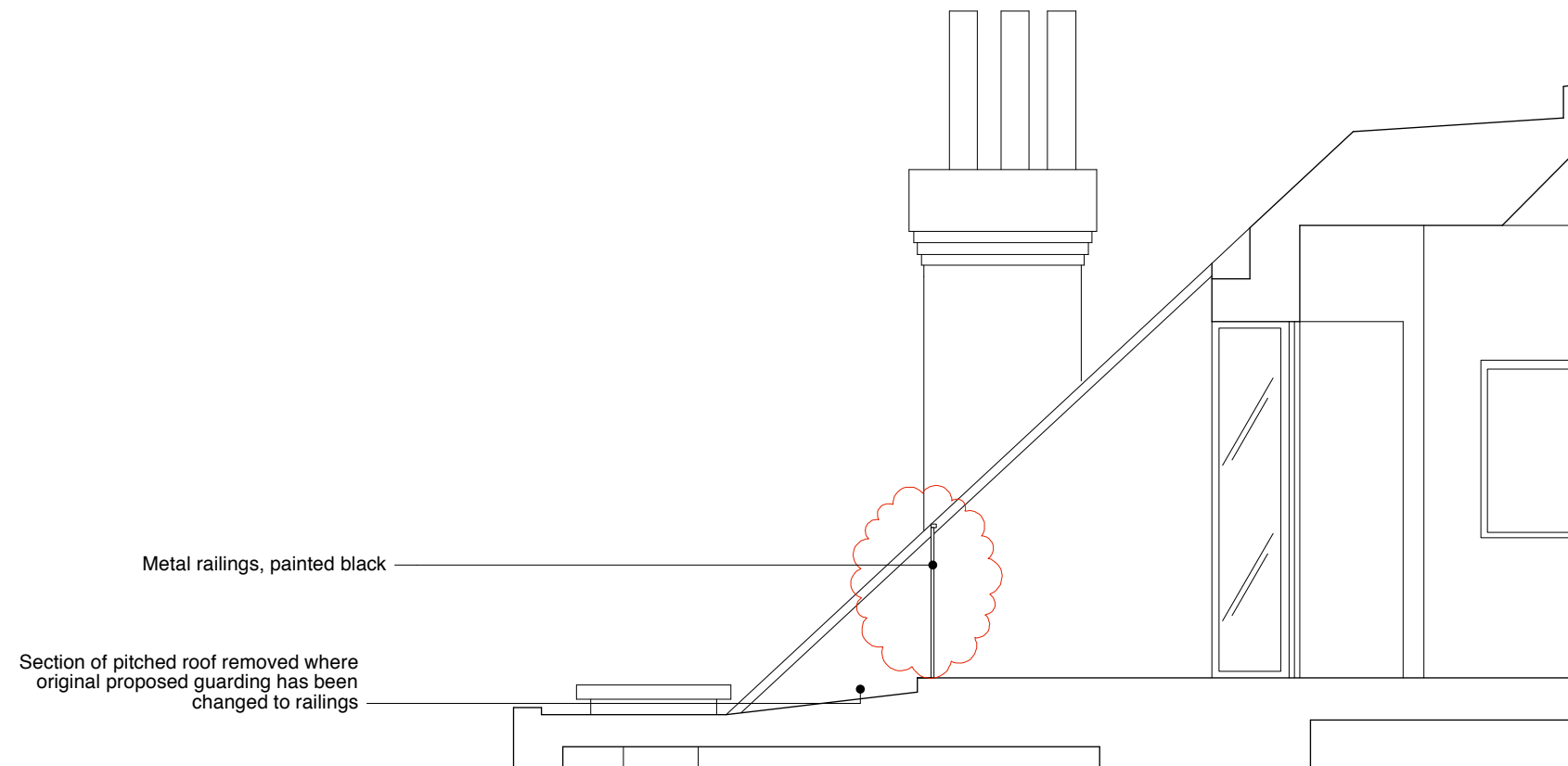


Rear Elevation

1:100 2 5 10m

Notes:
Revisions as clouded
All other alterations as per registered drawings submitted for planning by David Scott Architects

Proposed Arrangements Front + Rear Elevation
WK Revision of DWG. NO. PRO_05A
WKS-141112-04A
12b Wedderburn Road, London NW3 5QG
scale: 1:100 @ A3



1:50 2 5m

Notes:
Revisions as clouded
All other alterations as per registered drawings submitted for planning by David Scott Architects

Proposed Arrangements Section Through Inset Balcony
WK Revision of DWG. NO. PRO_07
WKS-141112-05
12b Wedderburn Road, London NW3 5QG
scale: 1:50 @ A3