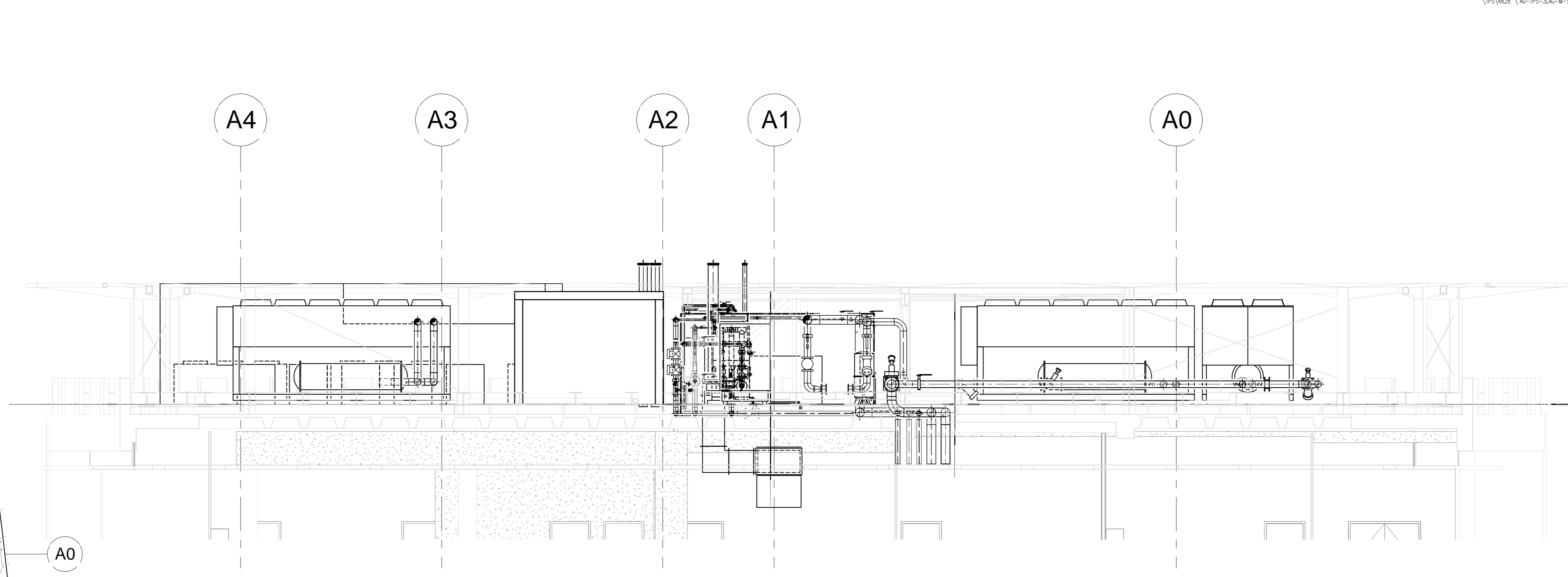
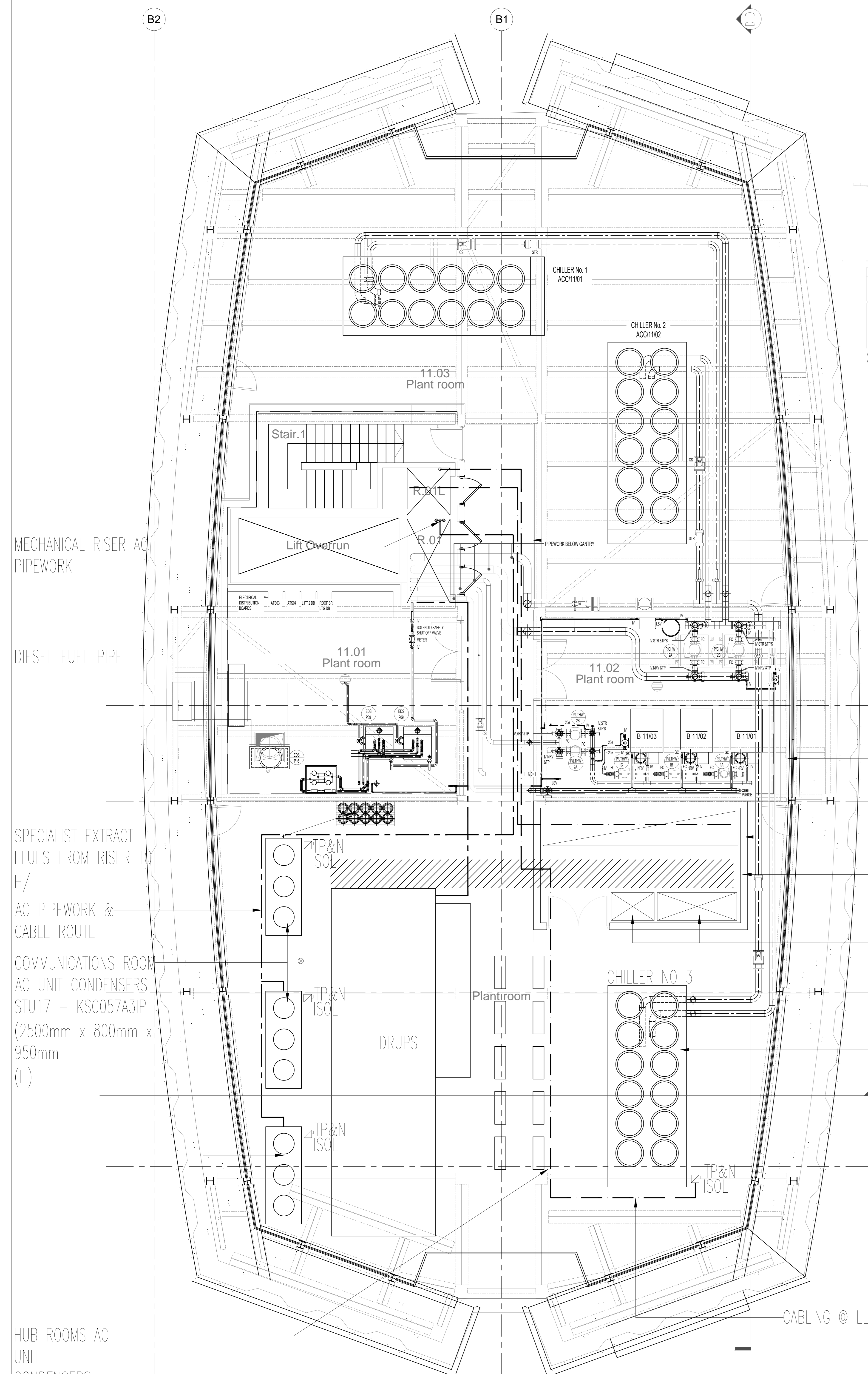


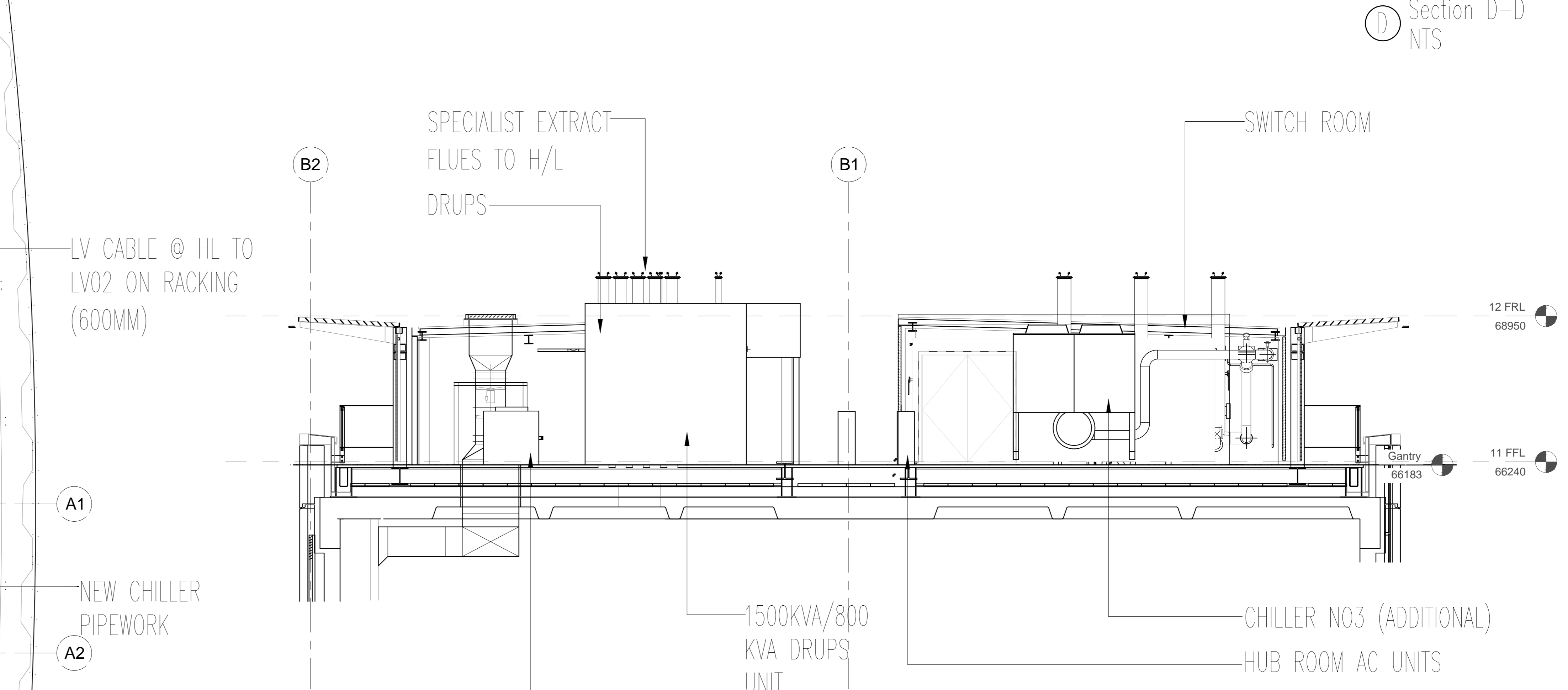
GENERAL NOTES

- PACKAGE 1
- PACKAGE 4
- PACKAGE 15

1) THE M&E DRAWINGS INDICATE DESIGN INTENT & IS SUBJECT TO M&E SPECIALIST CONTRACTORS COMPLETION OF DETAILED DESIGN.



Section D-D  
NTS



Section C-C  
1 : 50

MECHANICAL RISER AND PIPEWORK

DIESEL FUEL PIPE

SPECIALIST EXTRACT FLUES FROM RISER TO H/L

AC PIPEWORK & CABLE ROUTE

COMMUNICATIONS ROOM AC UNIT CONDENSERS  
STU17 - KSC057A3IP  
(2500mm x 800mm x 950mm)  
(H)

HUB ROOMS AC UNIT CONDENSERS

LV CABLE @ HL TO LV02 ON RACKING (600MM)

NEW CHILLER PIPEWORK

LV02 SWITCHBOARD

DRUPS CABLES INSTALLED BELOW GRILLAGE

DRUPS CONTROL PANELS SWITCH BOARD

ACC/11/03 CLIMAVENETA  
TEC52/XL-CA/50512

COMMUNICATIONS ROOM AC UNIT CONDENSERS

CABLING @ LL

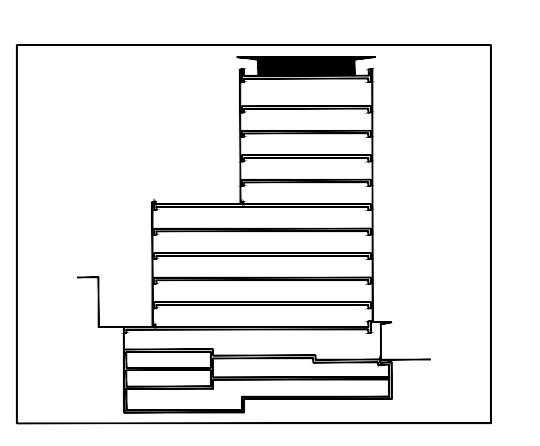
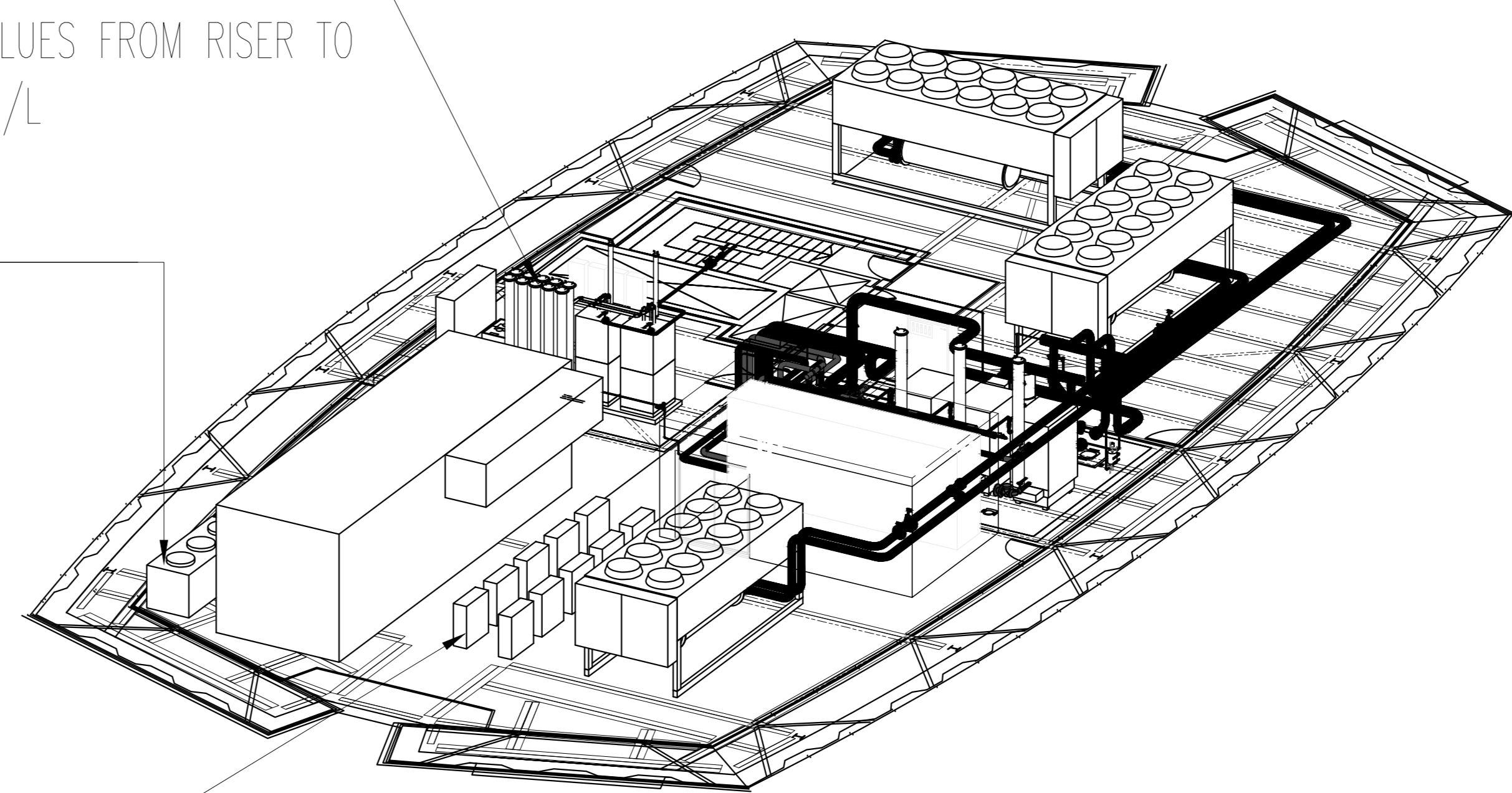
SPECIALIST EXTRACT FLUES TO H/L  
DRUPS

1500kVA/800kVA DRUPS UNIT  
COMMS ROOM CONDENSERS

SWITCH ROOM

SPECIALIST EXTRACT FLUES FROM RISER TO H/L

HUB ROOMS AC UNIT CONDENSERS



PLANNING

Rev	Date	Description
0	OCT14	PLANNING ISSUE

**TPS**  
Taylor Project Services LLP  
No.1 Cornhill  
London EC3N 2ND  
Tel 020 7743 6602  
www.taylorprojectservices.com

**HEALTH SERVICES LABORATORIES**

Project  
ONE MABLEDON PLACE  
KINGS CROSS  
LONDON  
WC1H 9AJ

PLANTROOM M&E SERVICES

Scale: 1:50@A0 Date: 29.05.14  
Drawn: L.R. Checked: G.N.T.

PLANNING

Revision: 0  
Drawing No: 1MP/M&E/TPS/DR/11PR/20/M/0

