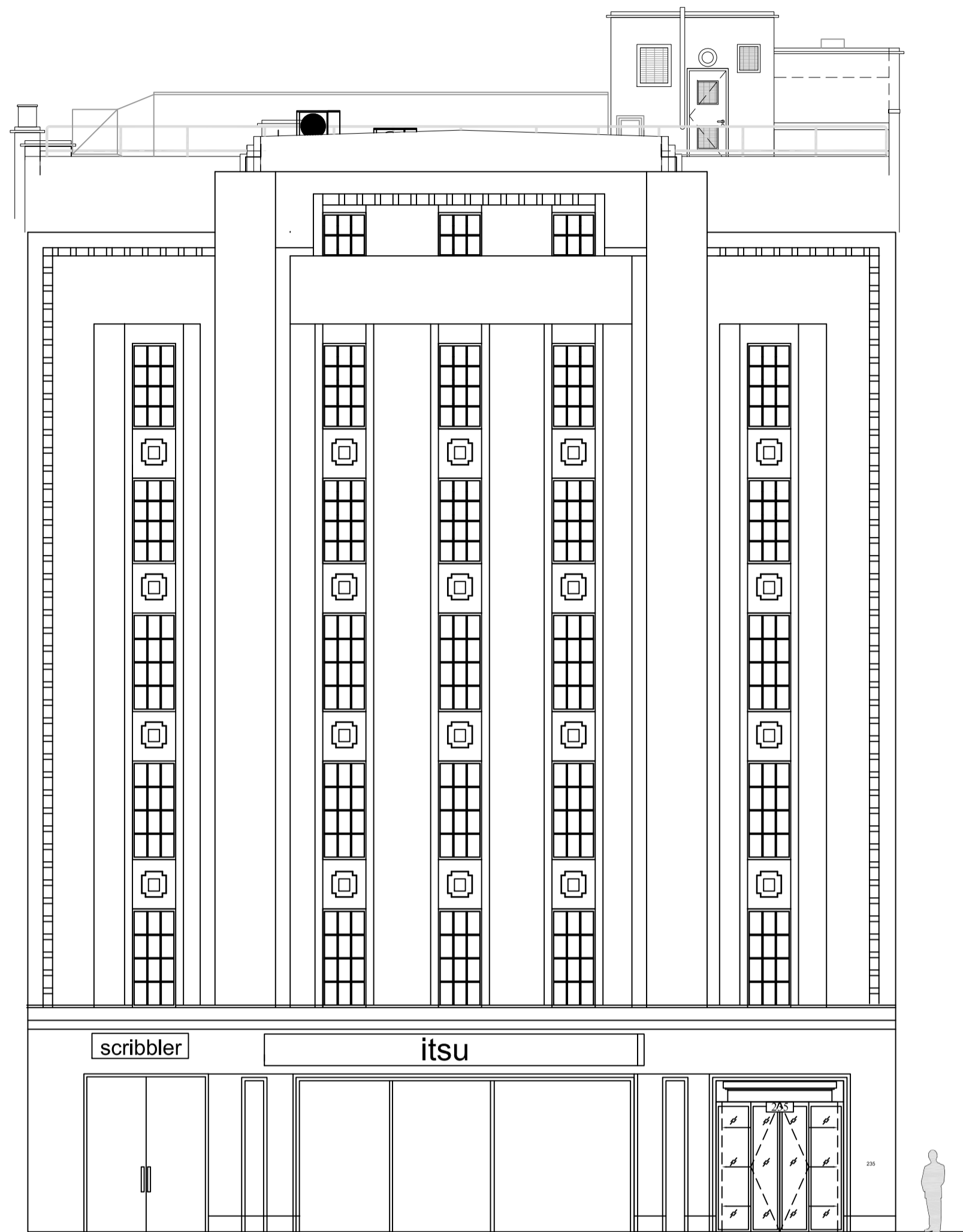


235 HIGH HOLBORN, LONDON

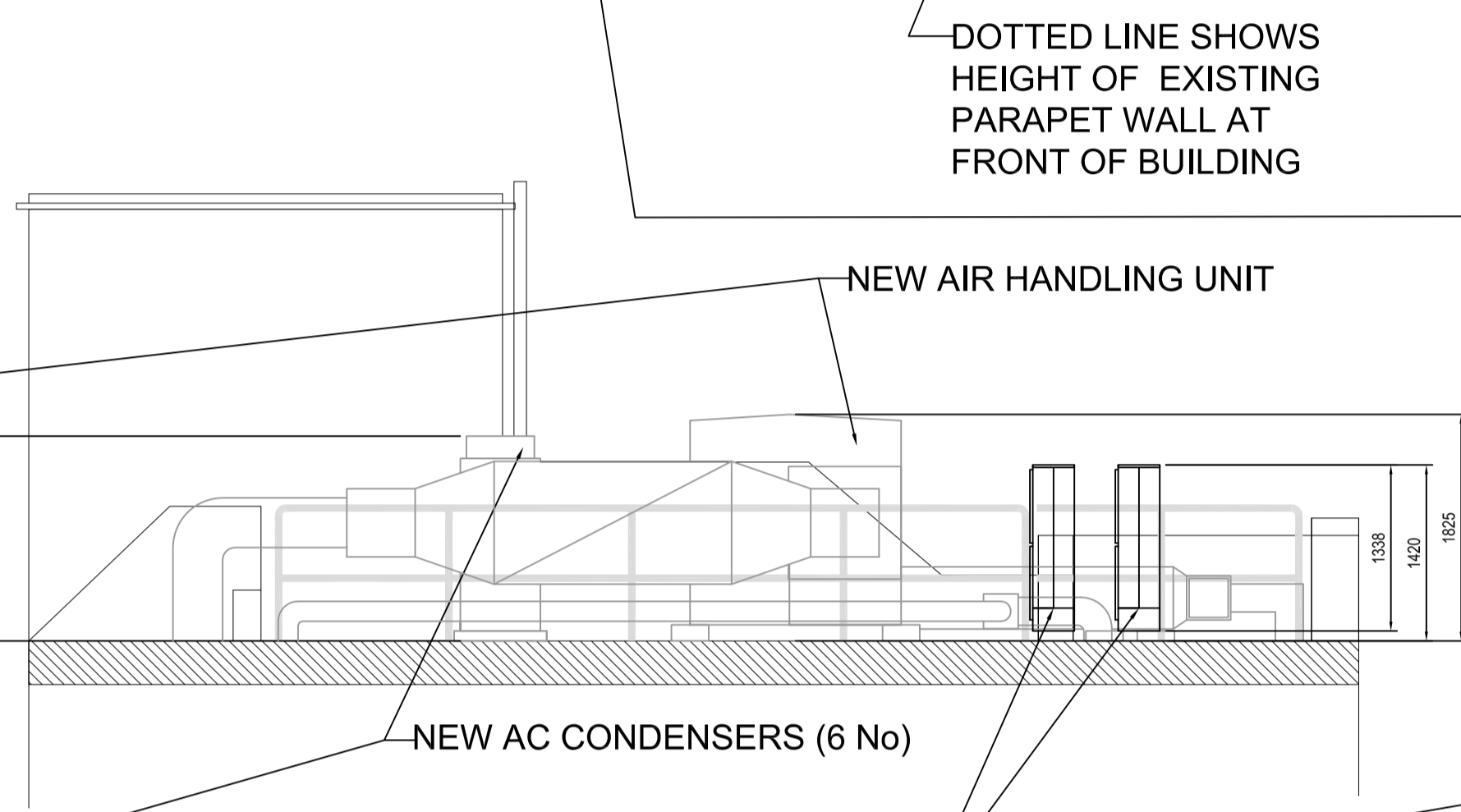
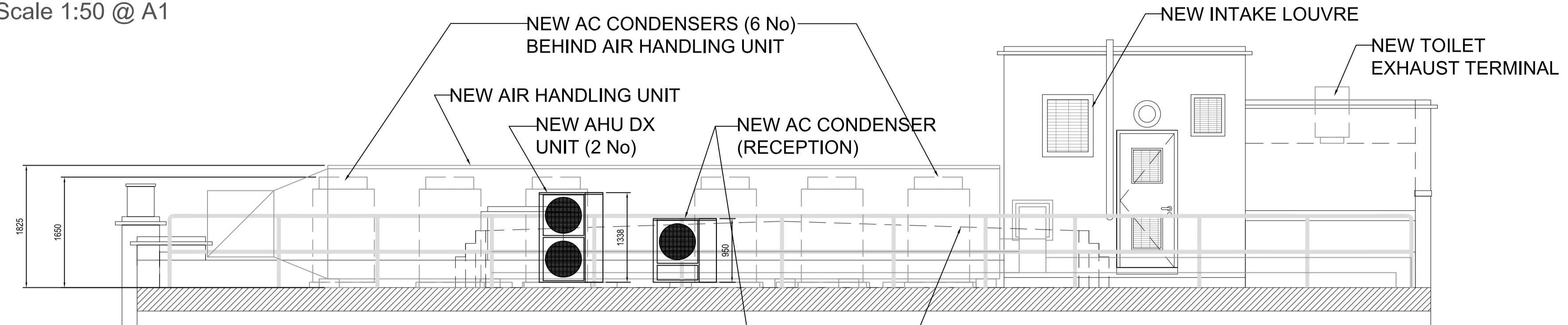
This drawing is the property of Avison Young and must not be copied or reproduced without express written permission. Use figured dimensions only. All dimensions to be verified on site prior to commencing construction. Do not scale.

ISSUED FOR INFORMATION

REV	DESCRIPTION	DATE
-	PRELIMINARY ISSUE	02:10:14
A	Site Map removed to separate sheet, minor details added	09:11:14
B	Proposed roof plan layout removed to separate sheet, notes added	11:11:14



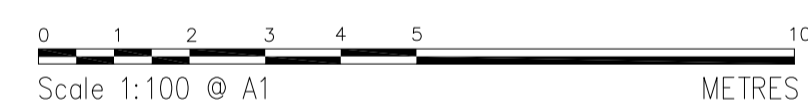
PROPOSED ROOF ELEVATION AA'
Scale 1:50 @ A1



PROPOSED ROOF ELEVATION BB'
Scale 1:50 @ A1



PROPOSED FRONT ELEVATION
Scale 1:100 @ A1



PROPOSED CONDENSERS FOR THE NEW VRF EQUIPMENT:

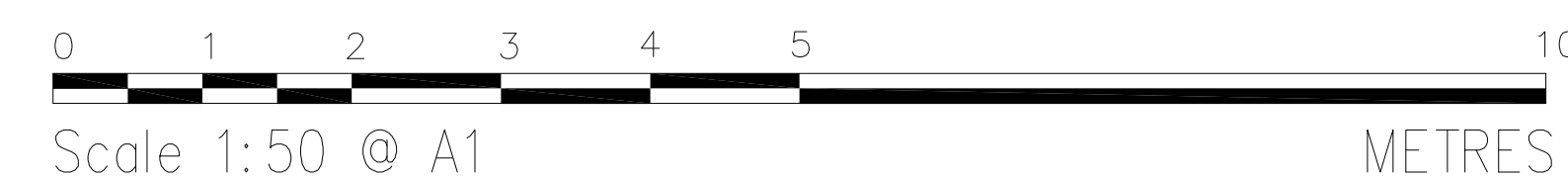
SYSTEM (Floor Served)	QTY	mitsubishi electric (Model Reference)	Height (mm)	Width (mm)	Depth (mm)	Sound Pressure (dBA)	Sound Pressure (dBA Low Noise Mode)	Colour
System 6	1	PURY-P250YJM	1650	920	760	57	44	Munsell 5Y8/1
System 5	1	PURY-P250YJM	1650	920	760	56	44	Munsell 5Y8/1
System 4	1	PURY-P250YJM	1650	920	760	57	44	Munsell 5Y8/1
System 3	1	PURY-P250YJM	1650	920	760	57	44	Munsell 5Y8/1
System 2	1	PURY-P250YJM	1650	920	760	57	44	Munsell 5Y8/1
System 1	1	PURY-P250YJM	1650	920	760	57	44	Munsell 5Y8/1
Reception	1	PUHZ-ZRP-71VHA	950	943	330	48	-	Munsell 5Y8/1
AHU DX Unit	2	PUHZ-RP200 YKAR	1338	950	360	59	-	Munsell 5Y8/1

NEW AIR HANDLING UNIT BY DELAIR:

QTY	DELAIR Model Reference	Height (mm)	Width (mm)	Depth (mm)	Colour
1	MA50 / 8 / S	1825	6750	1700	Goosewing Grey

NOTES:

1) THE EXISTING 12 No CONDENSER UNITS ARE TO BE REMOVED AND REPLACED WITH 6 No UNITS TO SERVE THE FLOORS WITH ADDITIONAL 3 No CONDENSERS INSTALLED (1 No TO SERVE RECEPTION AND 2 No UNITS TO SERVE THE AIR HANDLING UNIT AT ROOF LEVEL). NB NET REDUCTION OF 3 CONDENSER UNITS



PLANNING PERMISSION: PROPOSED ROOF EQUIPMENT



London
tel +44 (0)20 7101 0200
19 Margaret Street, London W1W 8RR

Thames Valley
tel +44 (0)1494 540 000
Hampden Chase, Little Hampden Great Missenden
Bucks HP16 9PT

avisonyoung.com

Client:
GLOUCESTER INVESTMENTS

Project Title:
235 HIGH HOLBORN
LONDON

Dwg Title:
PROPOSED ROOF EQUIPMENT
ROOF LEVEL

Scale: As Shown Date: 02/10/14 Rev: **B**

Dwg No: **2229/ROOF/GA/02** Drawn by: AR
Chkd by: JB

© Avison Young 2014
All rights reserved. No part of this document may be reproduced, stored in a retrieval system, or transmitted, in any form, or by any means, electronic, mechanical, photocopying, recording or otherwise, without prior permission, in writing from Avison Young.