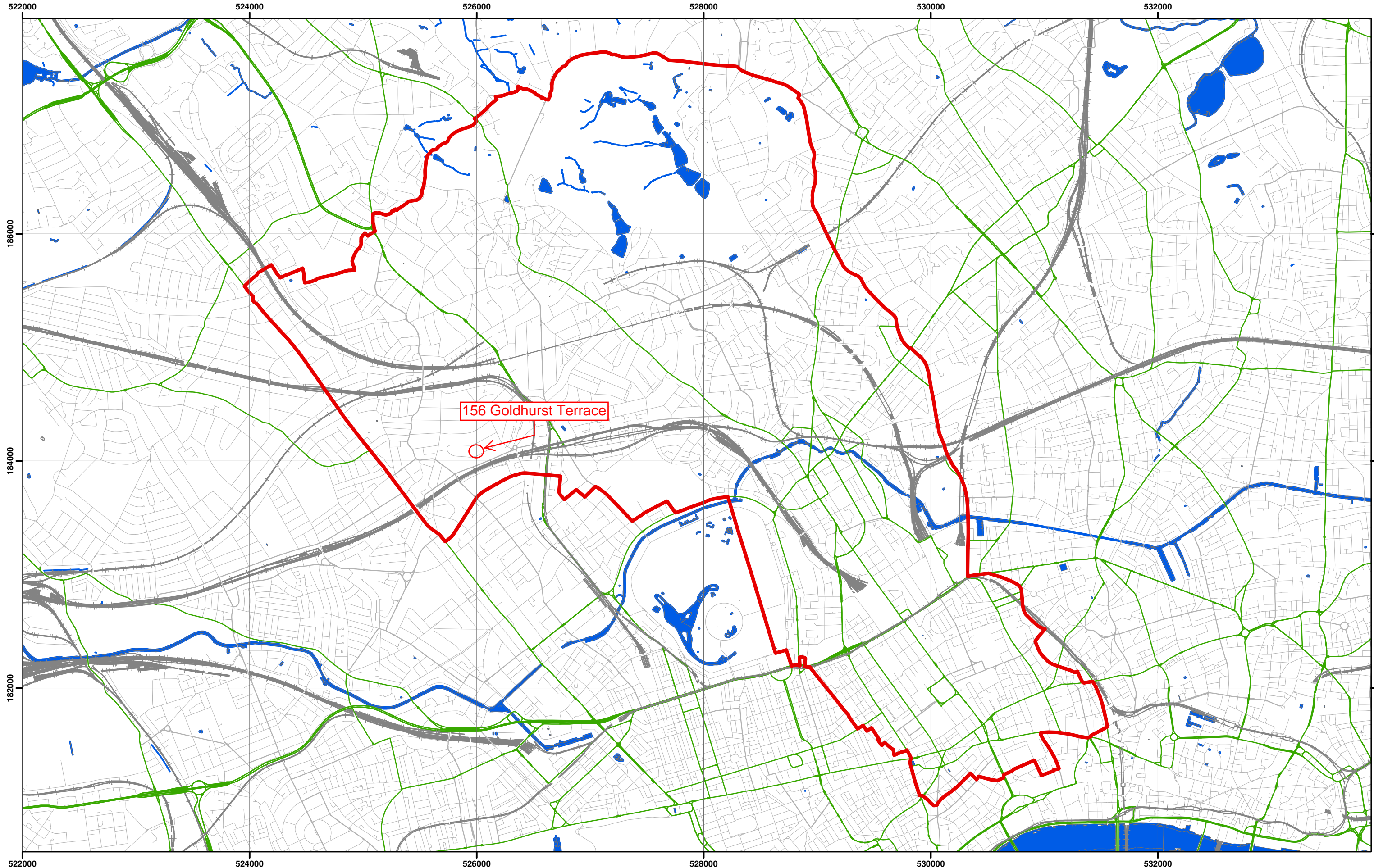


**Camden Geological, Hydrogeological
and Hydrological Study
Watercourses**

Source – Barton, Lost Rivers of London



Data Source: London Borough of Camden, 2010



Scale at A3: 1:30,000

Coordinate System:
British National Grid
GCS_OSGB_1936

Legend

- █ London Borough of Camden
- Surface water
- Railway Lines
- A Roads

Camden Geological, Hydrogeological and Hydrological Study

Camden Surface Water Features

213923

FIGURE

12

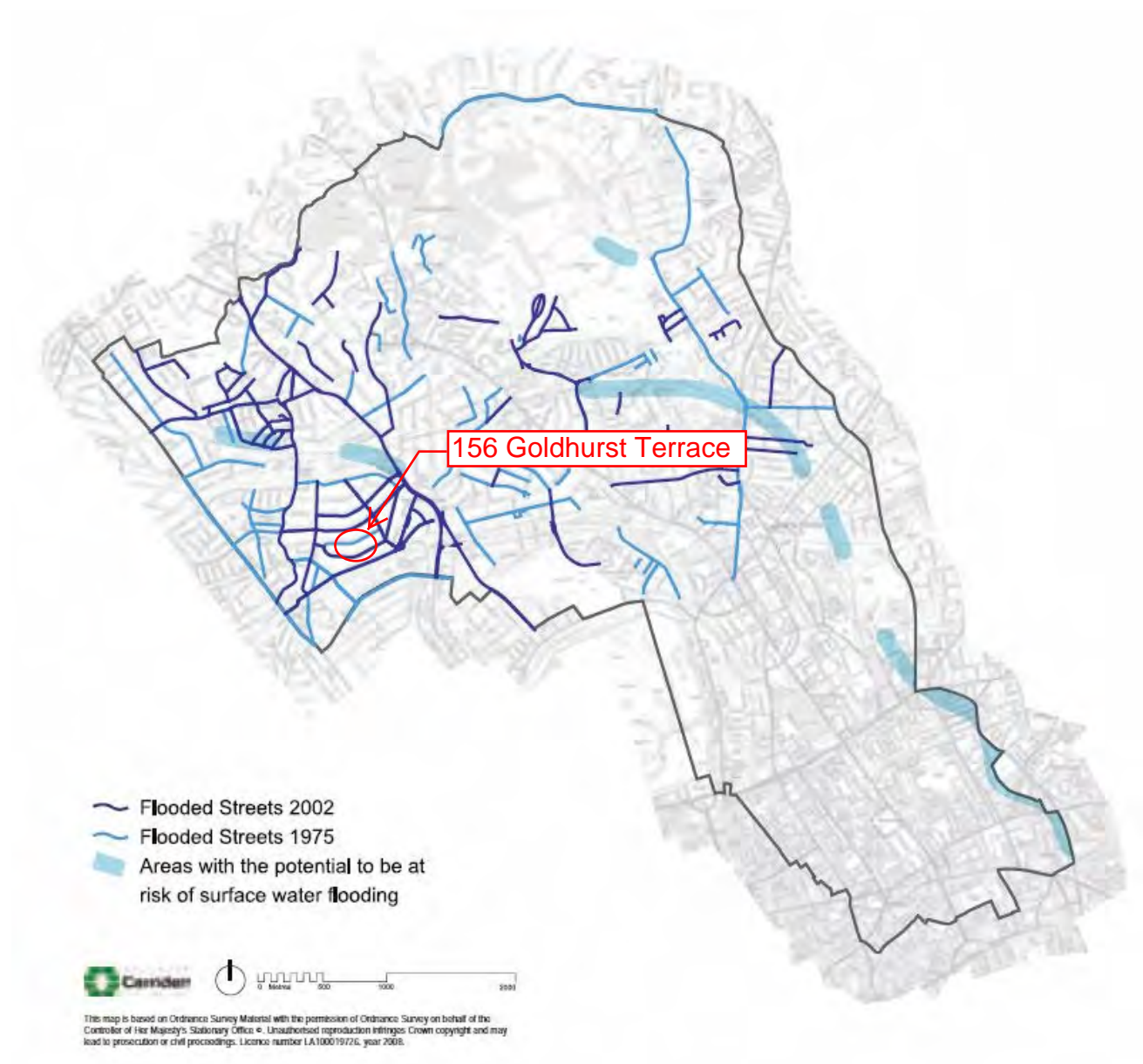
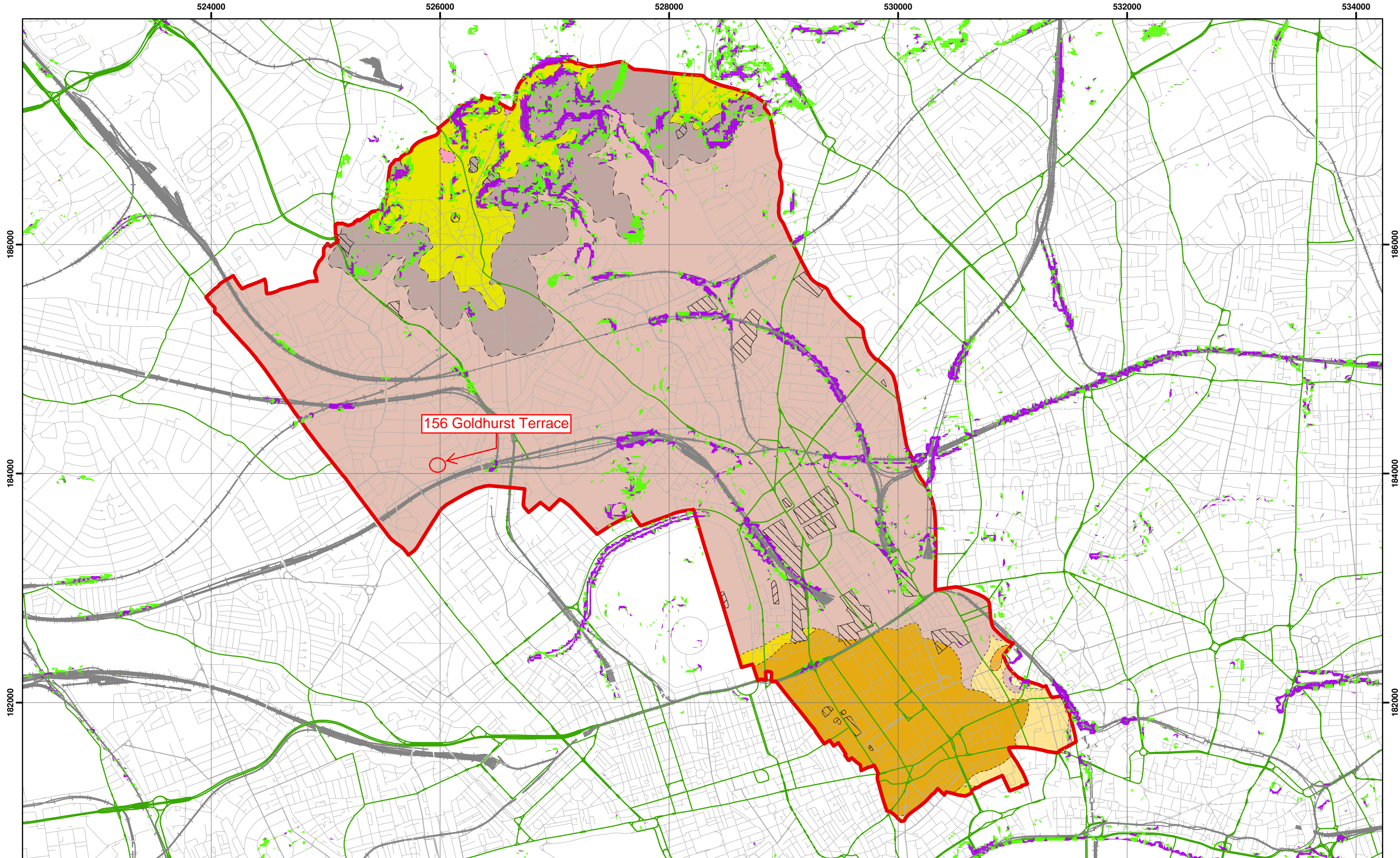


Figure 5 from Core Strategy, London Borough of Camden

Camden Geological, Hydrogeological and Hydrological Study Flood Map



Slope Angles calculated from Digital Terrain Model Provided By Camden Borough Council

N

0 0.5 1 2 3

Kilometers

Scale at A3: 1:30,000

1:10,000 BGS Mapping
Coordinate System:
British National Grid
GCS_OSGB_1936

Legend

Slope

- 0° - 7°
- 7° - 10°
- > 10°

London Borough of Camden

- Railway Lines
- A Roads

BGS 1:10K Artificial Ground

- MADE GROUND
- WORKED GROUND

BGS 1:10K Drift Geology

- ALLUVIUM
- HACKNEY GRAVEL FORMATION
- LANGLEY SILT FORMATION
- LYNCH HILL GRAVEL FORMATION
- STANMORE GRAVEL FORMATION

BGS 1:10K Solid Geology

- BAGSHOT FORMATION
- CLAYGATE MEMBER
- LAMBETH GROUP
- LONDON CLAY FORMATION

NB. Geological boundaries are largely indicative based on available geological mapping data



Source - London Borough of Camden, January 2010. *Camden Core Strategy Proposed Submission*.

Camden Geological, Hydrogeological and Hydrological Study Transport Infrastructure