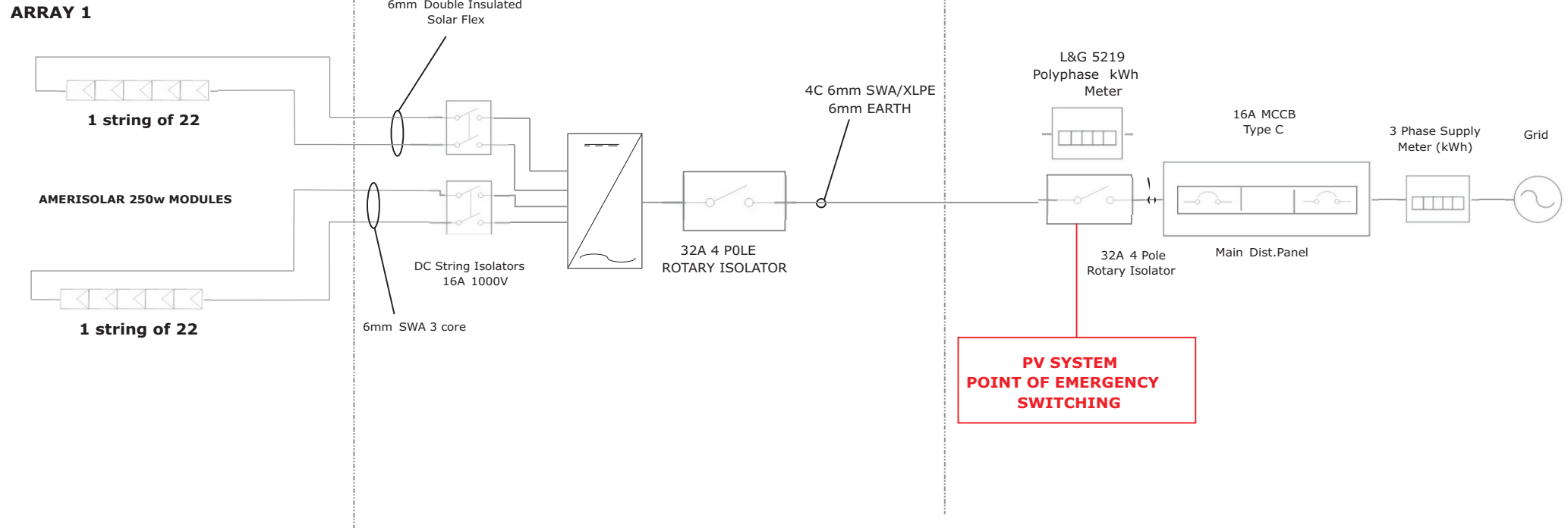


ROOF LAYOUT

TOP FLOOR RISER

ELECTRICAL SWITCH-ROOM



START UP PROCEDURE

1. Check PV System MCB is 'on'
2. Rotate Main AC Isolator to the 'on' position (POINT OF EMERGENCY SWITCHING)
3. Ensure ALL DC String Isolators are set to the 'on' position (1)
4. Rotate each local AC Inverter Isolator to the 'on' position
5. Wait 3 minutes form each inverter to start-up
6. A continuous green light on the front LCD display indicates system is generating.

DISCONNECTION SEQUENCE (Always isolate AC First)

1. Rotate the Local AC Inverter Isolators to the 'Off' position.
2. Rotate the DC String Isolators to the 'OFF' position (0)
3. Allow 15 minutes for dissipation of capacitor charge before removing inverter cover


INVERTERS -

INV 01 AURORA PVI 10 TL OUTD

SYSTEM DETAILS -

Total 2 strings of 22 AMERISOLAR 250w

TOTAL 44 X 250w 11Kwp

	PV ELECTRICAL SCHEMATIC PLENDER STREET (LANDLORDS SUPPLY) BLOCK B , CAMDEN LONDON	DRAWN BY	CHECKED	DATE	SCALE	SHEET NO.
		F.G.B		1/4/14	NTS	1 OF 1