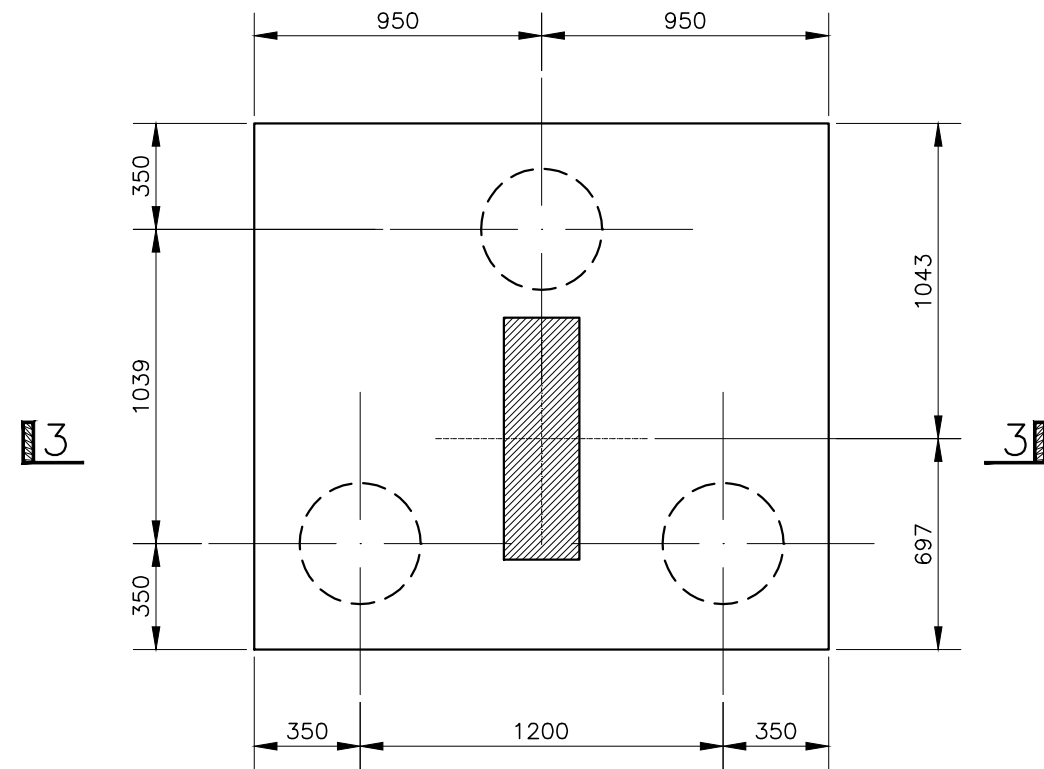


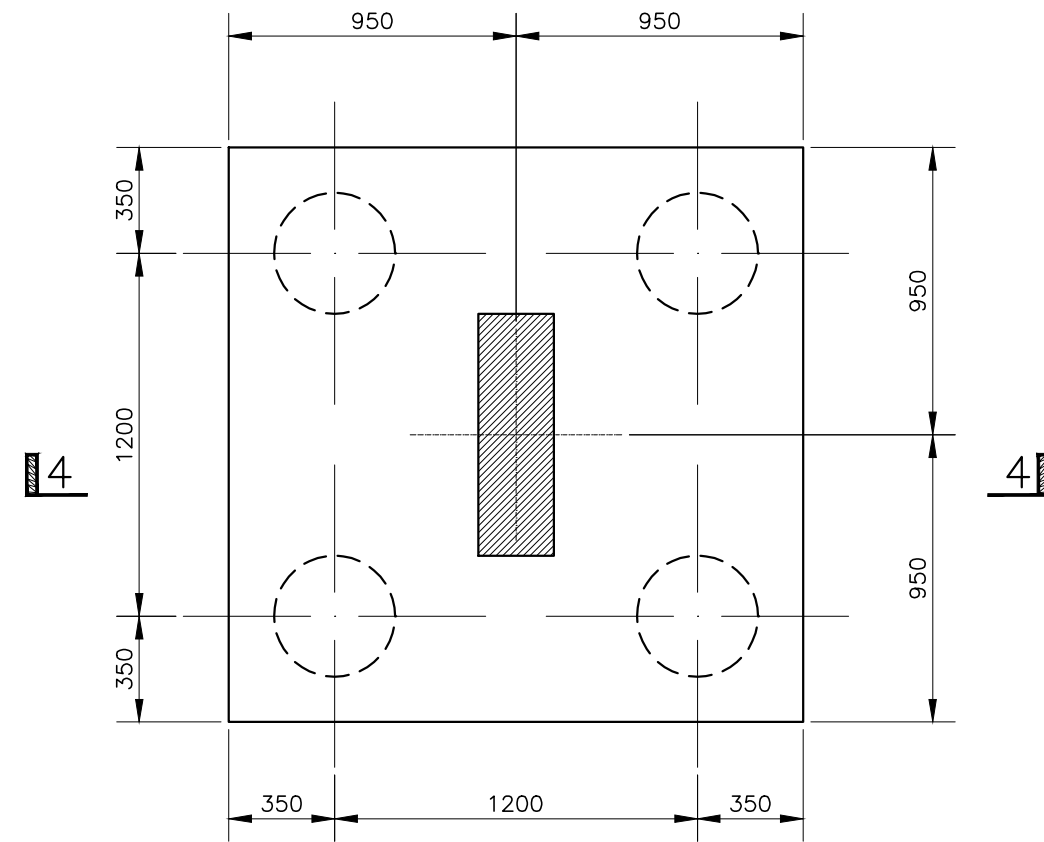
P02 Pile Cap

Scale 1:25



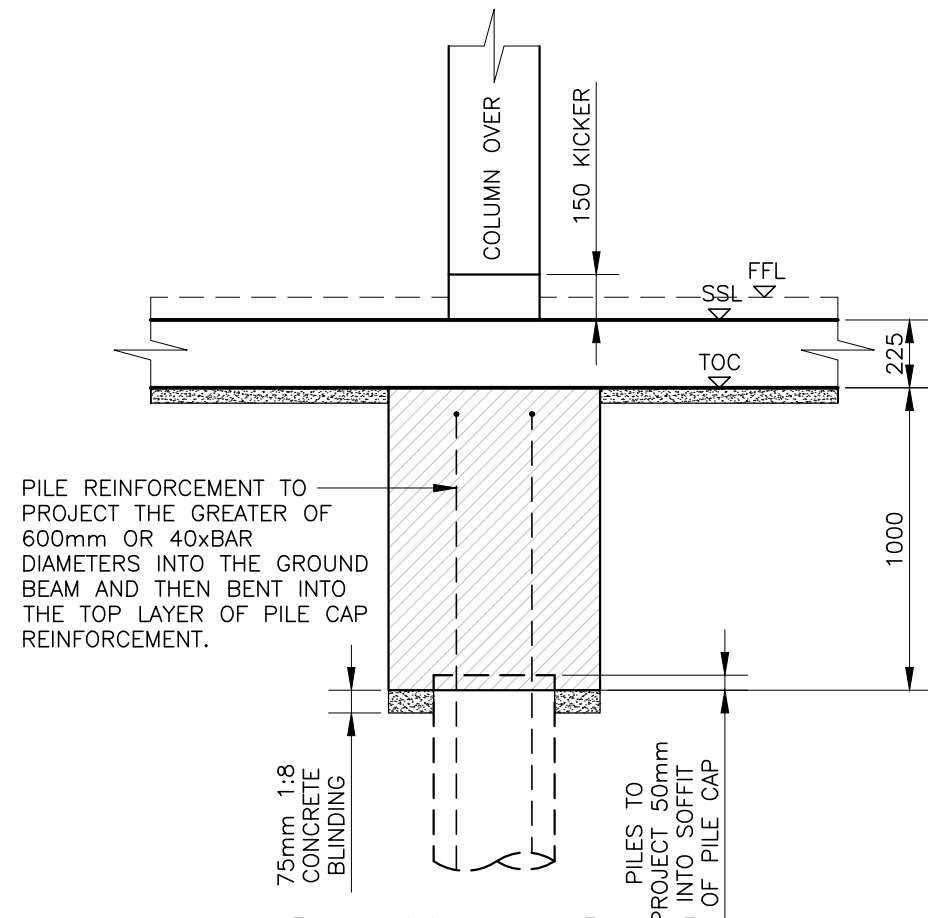
P03 Pile Cap

Scale 1:25



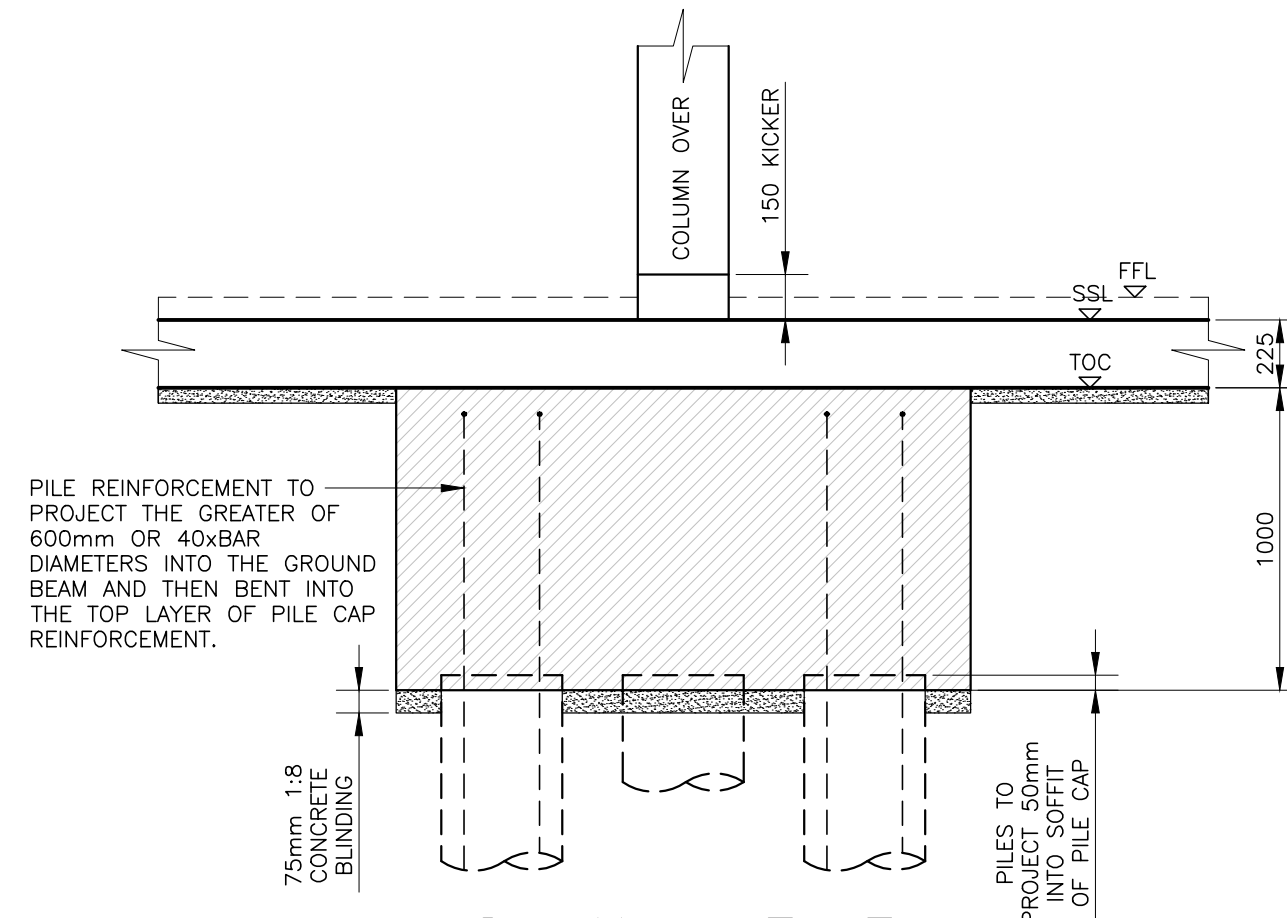
P04 Pile Cap

Scale 1:25



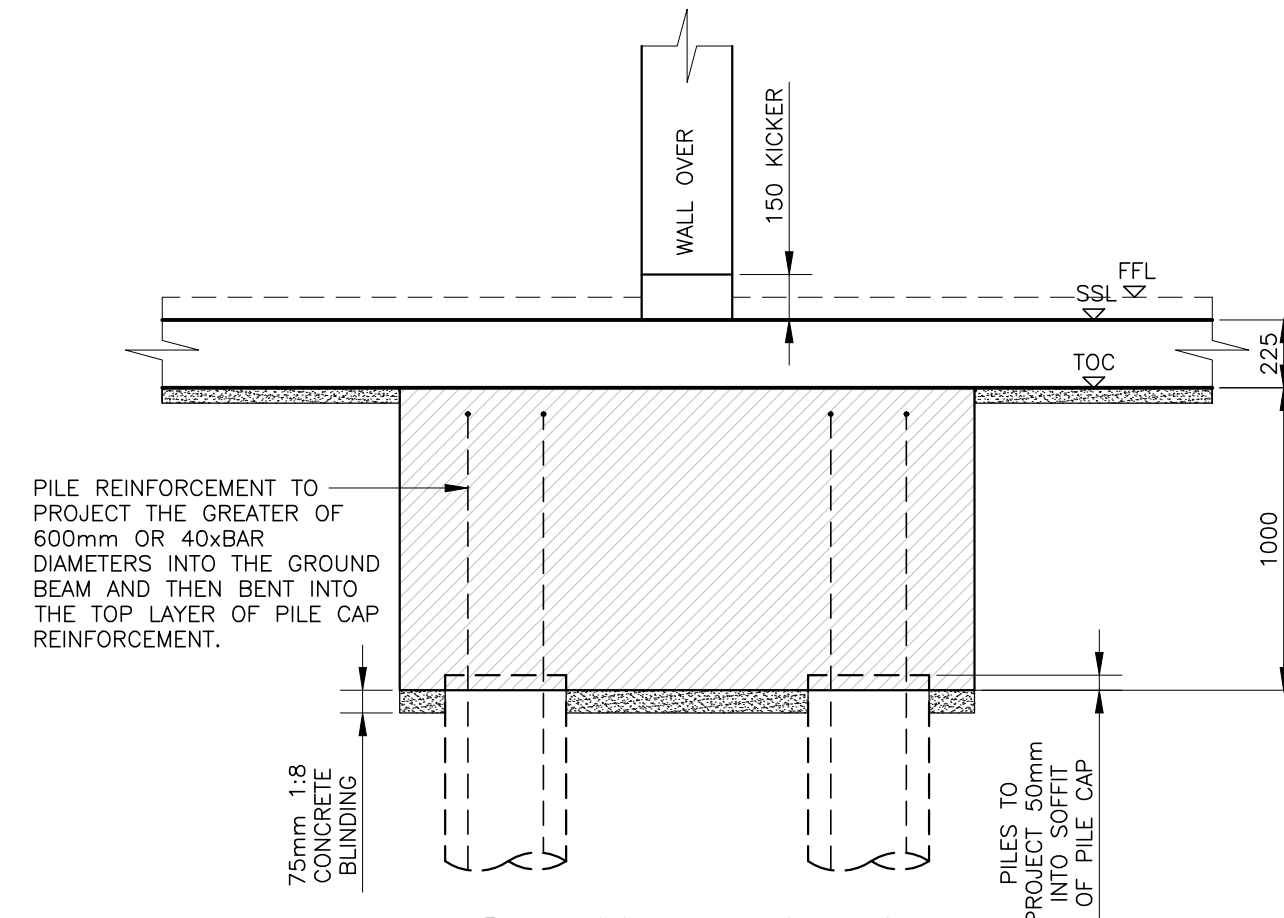
Section 2-2

Scale 1:25



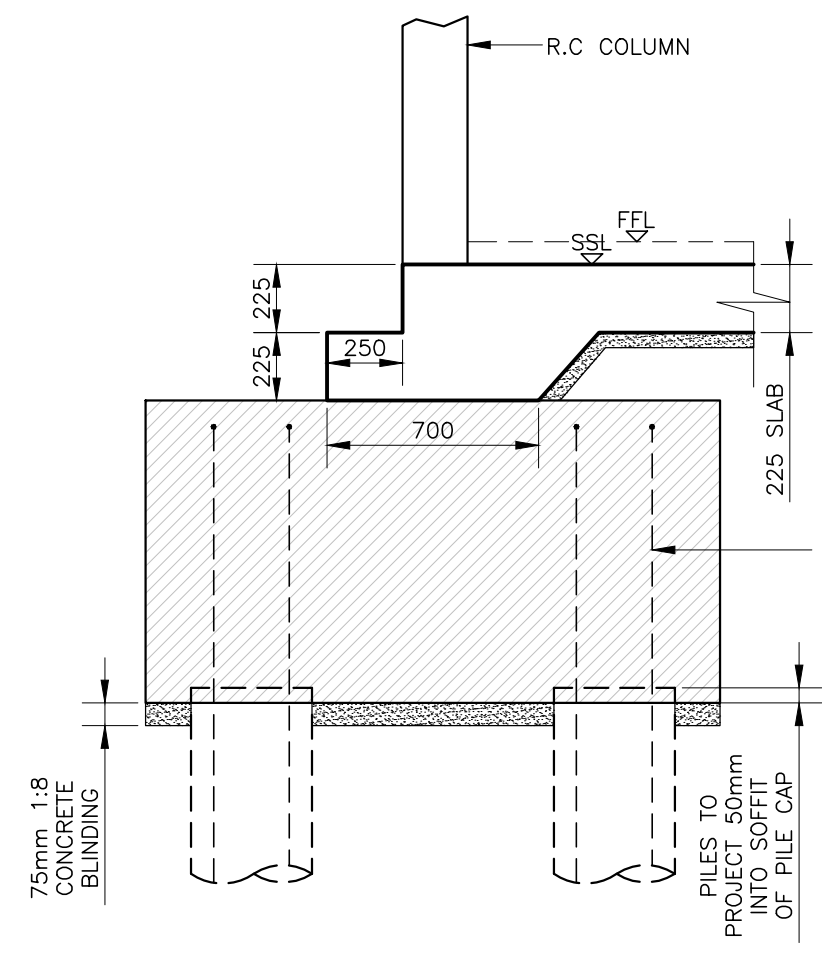
Section 3-3

Scale 1:25



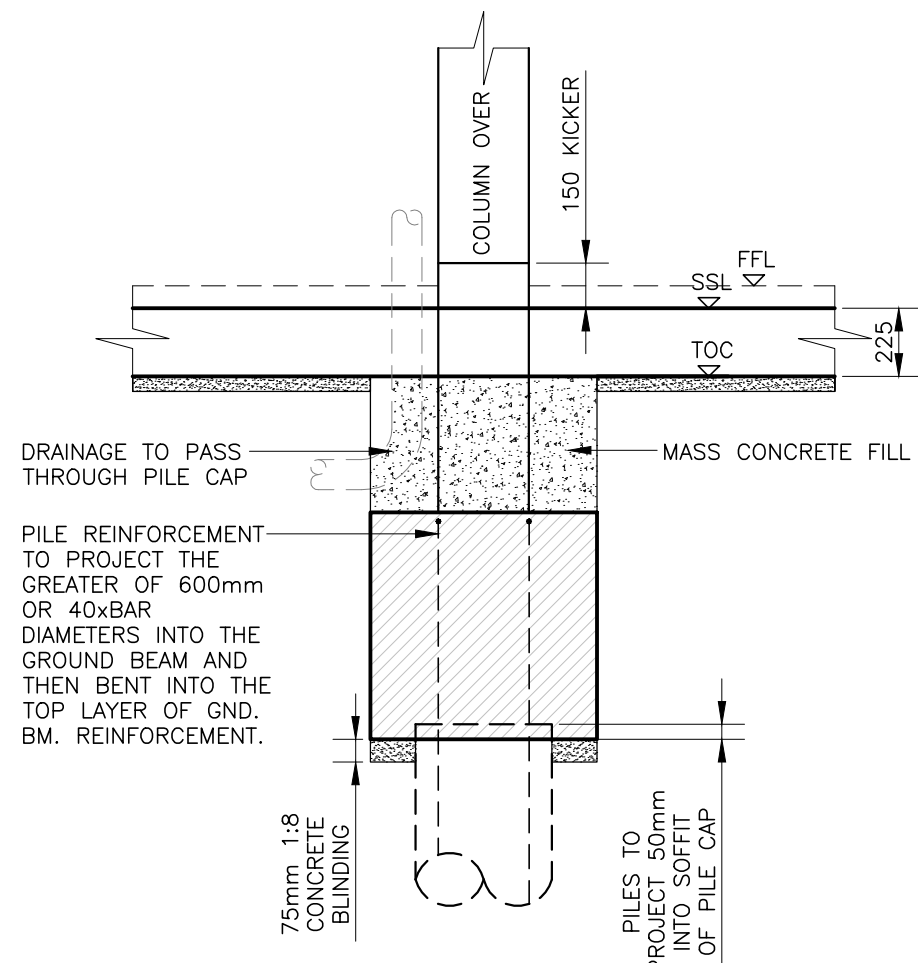
Section 4-4

Scale 1:25



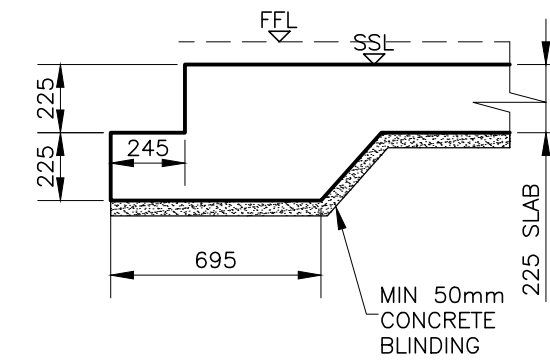
Typical Slab Edge Detail at Pile Cap

Scale 1:25



Typical Section at SVP

Scale 1:25



Typical Slab Edge Detail

Scale 1:25

FOR NOTES REFER TO GENERAL NOTES DRAWING 6398-GN-1.0.	
ALL SETTING OUT IS TO THE ϕ OF COLUMNS AND SHEAR WALLS UNLESS NOTED OTHERWISE.	
ALL RC WALLS TO BE 200 THICK UNO.	
ALL COLUMNS 600x200 UNLESS NOTED OTHERWISE.	
Φ - DENOTES PENETRATION THROUGH SLAB	
ALL BUILDERS WORKS HOLES ARE TO BE SET OUT ON SITE USING WALKER ASSOCIATES DRAWINGS. ANY DEVIATION FROM THIS IS TO BE HIGHLIGHTED TO WALKER ASSOCIATES A.S.A.P. M AND E ENGINEER TO ENSURE ALL HOLES HAVE BEEN SHOWN ON WALKER ASSOCIATES DRAWINGS PRIOR TO INSTALLATION.	
ALL UPSTANDS AND DOWNSTANDS DIMENSIONS ARE TO BE TAKEN FROM SSL.	
NOTE: ORISGRIL OR SIMILAR APPROVED GRILLAGE TO BE CAST INTO ALL HOLES GREATER THAN 200mm SQUARE.	
ALL CONCRETE TO BE SOURCED THROUGH A SUPPLIER WHO OPERATES AN ENVIRONMENTAL MANAGEMENT SYSTEM WHICH COMPLIES WITH THE REQUIREMENTS OF ISO 14001:2004	
C40 - WATERPROOF CONCRETE TO BASEMENT WALLS, SLABS AND LIFT PITS. ACEC-2 DS-3	
APPROXIMATE PILE DEPTH 20m BELOW GROUND LEVEL TO BE CONFIRMED BY PILING CONTRACTOR.	
COLUMNS 8, 10 AND 12 ARE TO BE GRADE C50 CONCRETE.	

B	11.07.14	ISSUED FOR CONSTRUCTION	PMB	WA
A	27.06.14	DETAIL REMOVED	PMB	WA
-	17.03.14	PRELIMINARY ISSUE	PMB	WA
REV	DATE	AMENDMENT	BY	CHKD

STATUS **Construction**

PROJECT
Plender Street

CLIENT
Higgins

DRAWING
Pile Cap Details
Block A

DATE Jan 14 DRAWN BY **PMB**
SCALES (@A1)- 1:50 CHECKED BY
DRG NO. **6398-A-S10.2^B**

walkeras ASSOCIATES CONSULTING LIMITED
Address 13 Capricorn Centre
Cranes Farm Road
Basilston
Essex SS14 3JJ
Tel 01268 530 500
Fax 01268 28 66 28
Web www.walker-associates.co.uk