

Condition 5 (d)
Plan, elevation and section drawings of the new secondary stair
at a scale of 1:20 with balustrade and handrail details at 1:1.

**CLARIFICATION DRAWING FOLLOWING SITE
DISCUSSIONS ON STAIRS WITH LBO CHARLES ROSE.**

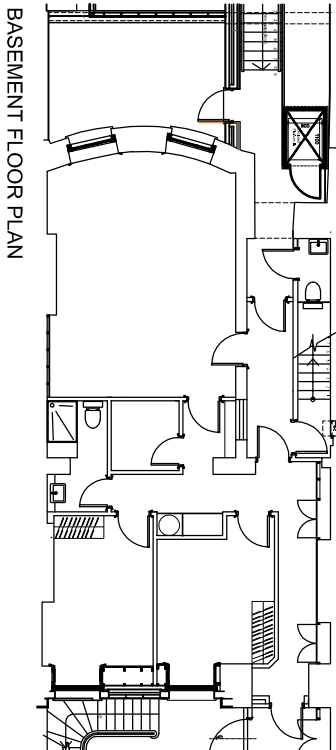


LOOKING DOWN FROM TOP

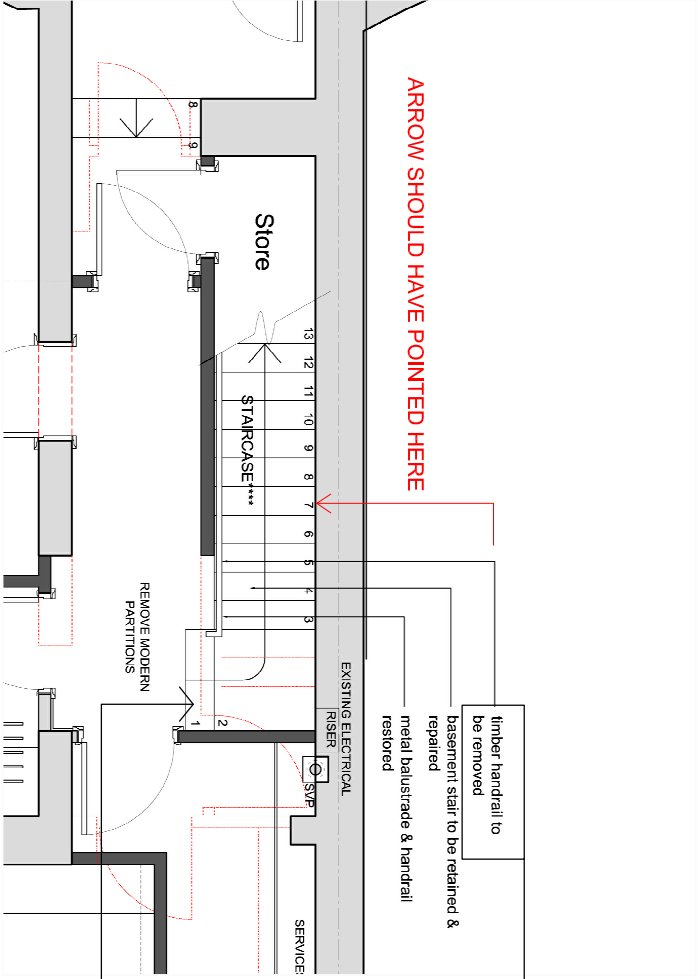


LOOKING UP FROM BOTTOM

STAIR HANDRAIL TO BE REMOVED



BASEMENT FLOOR PLAN



EXTRACT FROM APPLICATION DRAWING:
919 - P001_Proposed LGF 1to50 A1

ON APPLICATION DRAWING THIS IS NOTED
INCORRECTLY :
THE SAME HANDRAIL CANNOT BE REMOVED
WITH THE SAME METAL BALUSTRADE &
HANDRAIL RESTORED.
THE APPLICATION WAS TO REMOVE THE
MODERN TIMBER HANDRAIL TO THE PARTY
WALL SIDE

STAIR TO BE RETAINED IN ORIGINAL FORMAT-
NOT CHANGED AT BASE AS SHOWN

CLIENT:	Clarke Design and Build
JOB:	7 fitzroy square & 11 Grafton Mews London W1T 5HL
DATE:	20.11.13
SCALE:	as shown @ A3
DRAWING TITLE:	Details in reference to condition 5
DRAWING NUMBER:	LB 05d 001

BROOKS / MURRAY

ARCHITECTS

8-10 NEW NORTH PLACE
LONDON EC2A 4JA
TEL 020 7739 9955
FAX 020 7739 9944

architects@brooksmurray.com