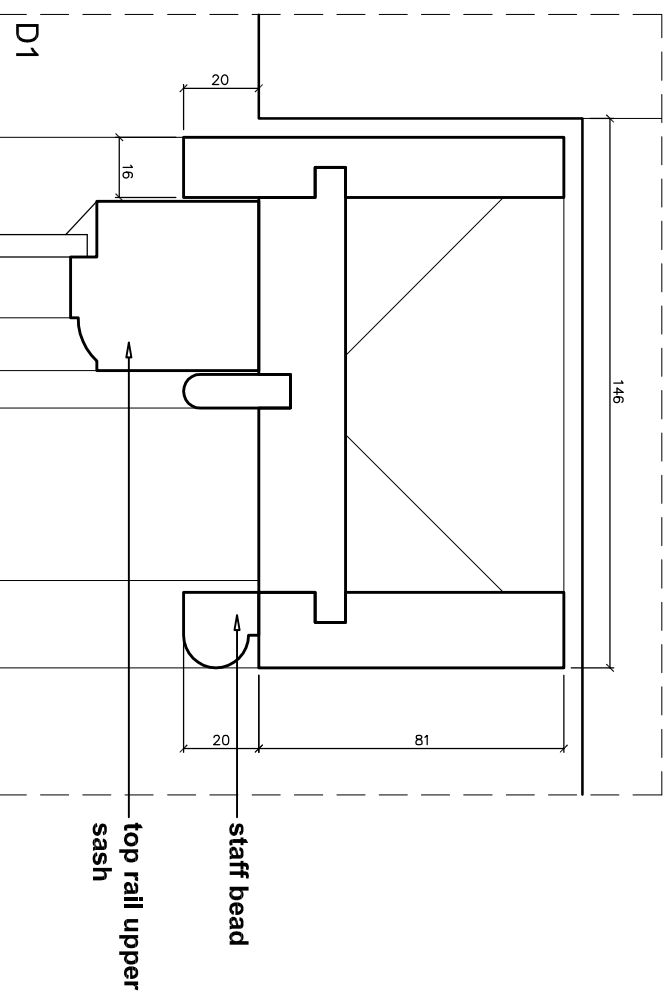
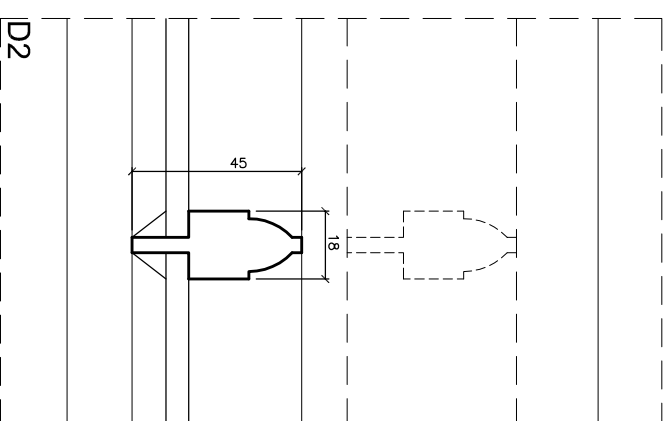


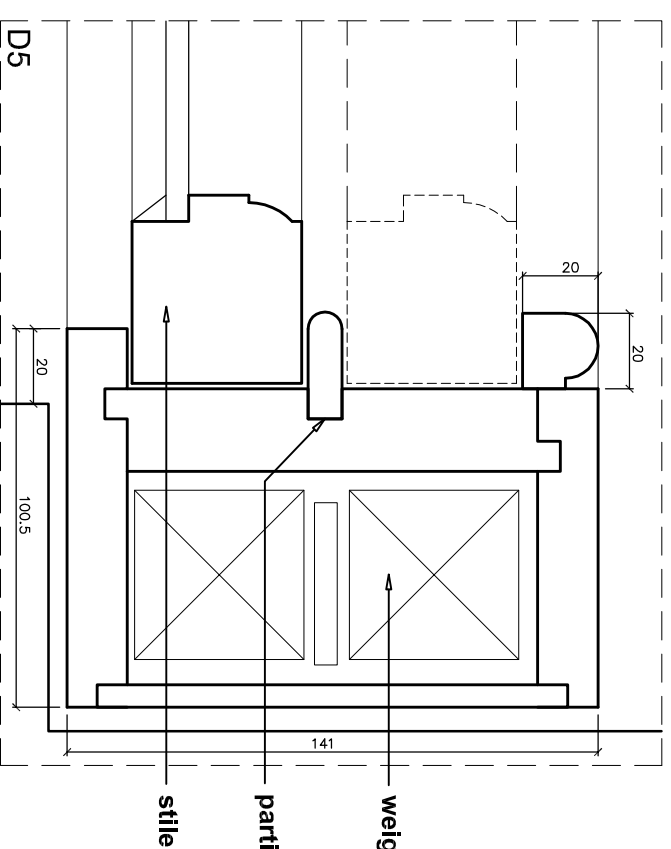
Condition 5 (c)
 Plan, elevation and section drawings of all new windows, at a scale of 1:10 with typical glazing bar details at 1:1 (including the glazing bar profiles for the new front elevation windows.)



staff bead
 top rail upper sash



muntin



weights in cavity
 parting bead
 stile

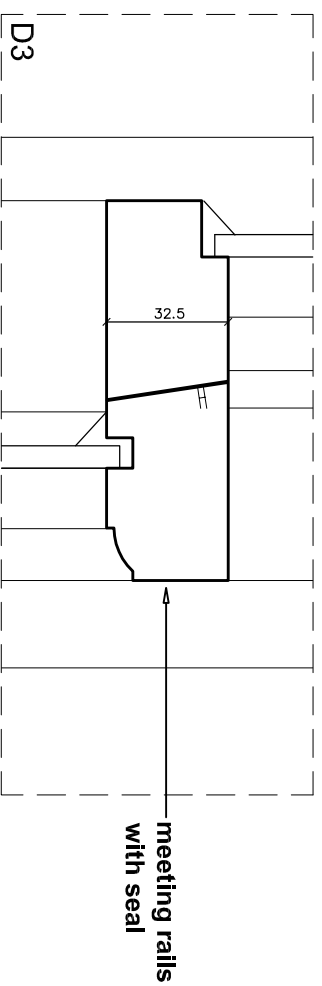
Notes: Sliding sash solutions:

Circular headed box framed window

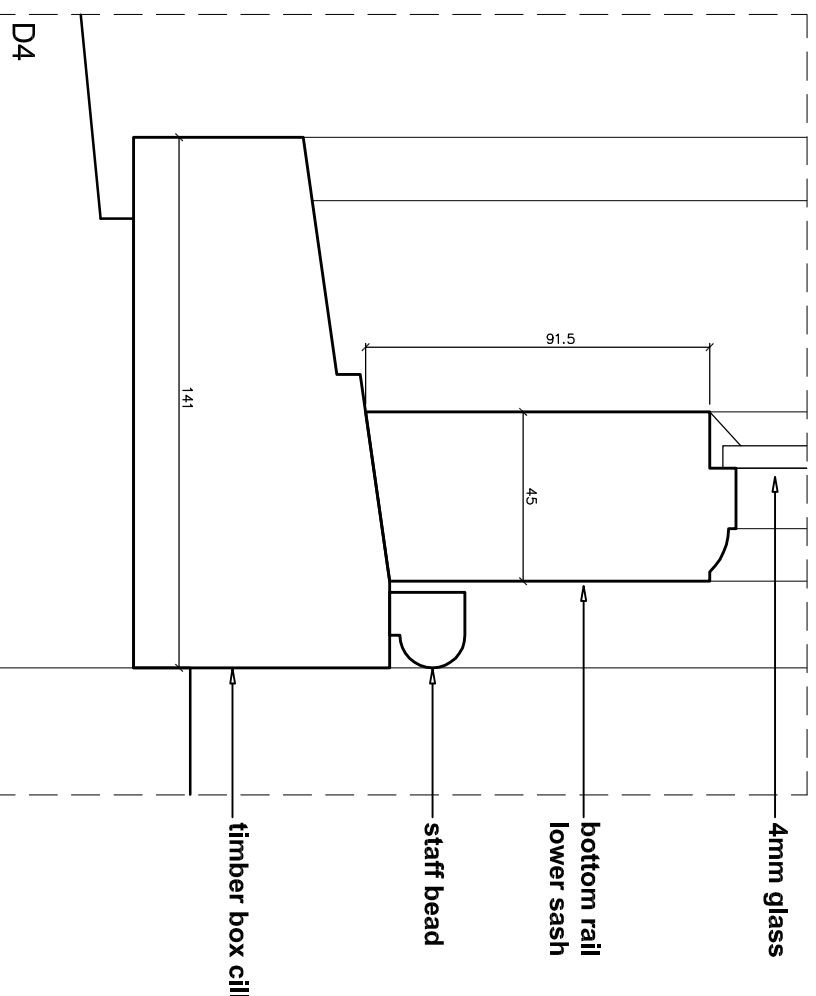
manufactured from european redwood with sapelle cill.
 Glass to consist of 4mm clear glass bedded in and faced with traditional linseed oil putty.
 Draught-proofing to be provided using the Solutions Brush Pile System tm
 All joinery to be spray primed and undercoated prior to installation using Remmers Induline Paint system
 Linels, pointing, masonry and plastering to be carried out by others.
 All Measurements to be checked before manufacturing

Box framed window

manufactured from european redwood with sapelle cill.
 Glass to consist of 4mm clear glass bedded in and faced with traditional linseed oil putty.
 Draught-proofing to be provided using the Solutions Brush Pile System tm
 All joinery to be spray primed and undercoated prior to installation using Remmers Induline Paint system
 Linels, pointing, masonry and plastering to be carried out by others.
 All Measurements to be checked before manufacturing



meeting rails with seal



4mm glass
 bottom rail lower sash
 staff bead
 timber box cill

BROOKS / MURRAY

ARCHITECTS
 8-10 NEW NORTH PLACE
 LONDON EC2A 4JA
 TEL 020 7739 9955
 FAX 020 7739 9944
 architects@brooksmurray.com

CLIENT:	Clarke Design and Build
JOB:	7 fitzroy square & 11 Grafton Mews London W1T 5HL
DATE:	20.11.13
SCALE:	1:2
DRAWING TITLE:	Details in reference to condition 5
DRAWING NUMBER:	LB 05c 007