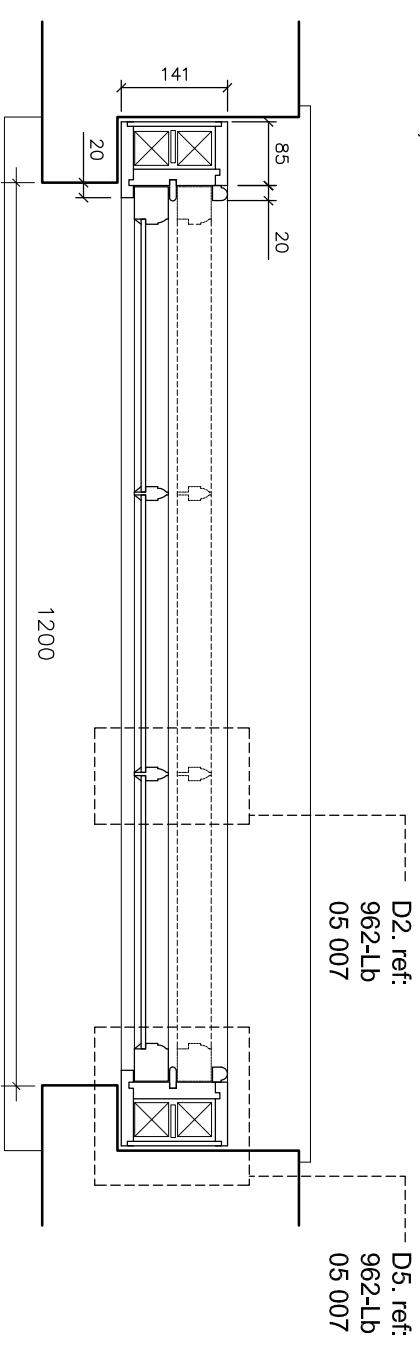
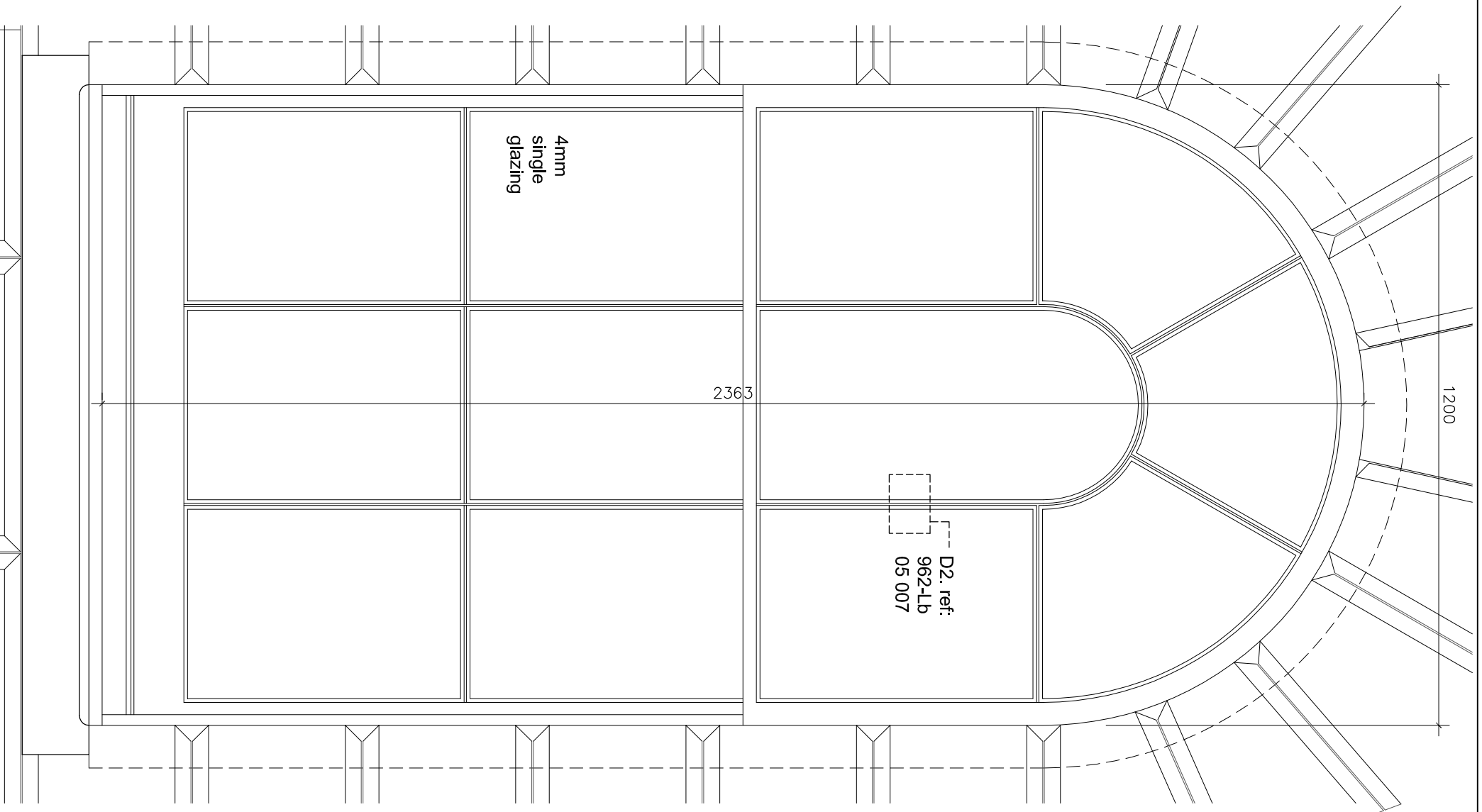


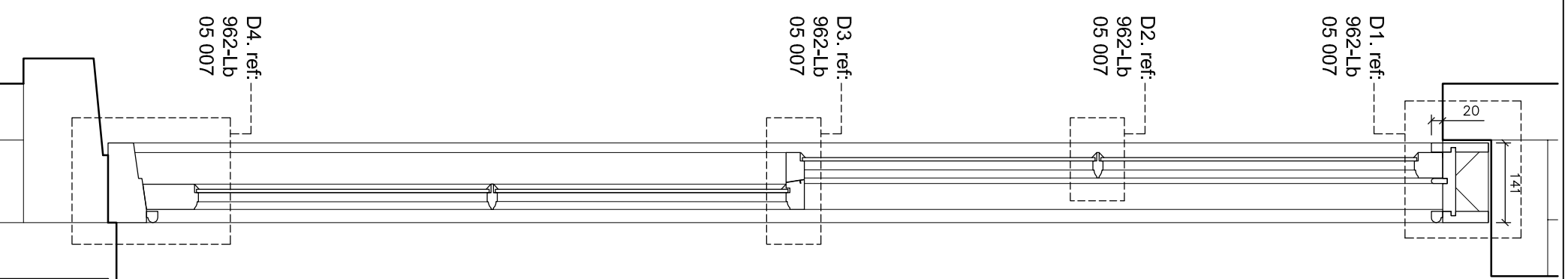
Condition 5 (c)
 Plan, elevation and section drawings of all new windows, at a scale of 1:10 with typical glazing bar details at 1:1 (including the glazing bar profiles for the new front elevation windows.)



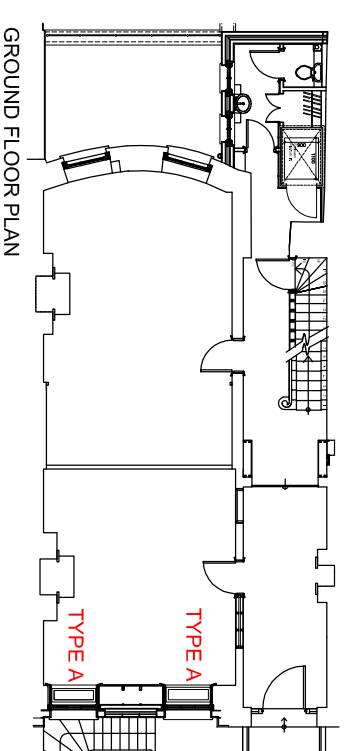
Ground floor front window plan (2No.) 1:10



TYPE A
 Ground floor front window elevation (2No.) 1:10



Ground floor front window section (2No.) 1:10



GROUND FLOOR PLAN

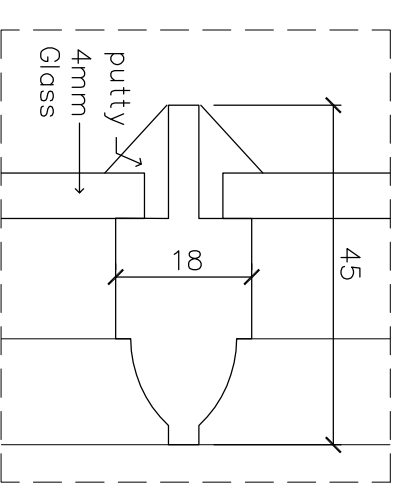
Notes: Sliding sash solutions:

Circular headed box framed window

manufactured from european redwood with sapelle cill.
 Glass to consist of 4mm clear glass bedded in and faced with traditional linseed oil putty.
 Draught-proofing to be provided using the Solutions Brush Pile System tm
 All joinery to be spray primed and undercoated prior to installation using Remmers Induline Paint system
 Linels, pointing, masonry and plastering to be carried out by others.
 All Measurements to be checked before manufacturing

Box framed window

manufactured from european redwood with sapelle cill.
 Glass to consist of 4mm clear glass bedded in and faced with traditional linseed oil putty.
 Draught-proofing to be provided using the Solutions Brush Pile System tm
 All joinery to be spray primed and undercoated prior to installation using Remmers Induline Paint system
 Linels, pointing, masonry and plastering to be carried out by others.
 All Measurements to be checked before manufacturing



D2
 Typical glazing bar detail at 1:1 to match existing

BROOKS / MURRAY

ARCHITECTS

8-10 NEW NORTH PLACE
 LONDON EC2A 4JA
 TEL 020 7739 9955
 FAX 020 7739 9944

architects@brooksmurray.com

CLIENT:	Clarke Design and Build
JOB:	7 fitzroy square & 11 Grafton Mews London W1T 5HL
DATE:	20.11.13
SCALE:	as shown @ A3
DRAWING TITLE:	Details in reference to condition 5
DRAWING NUMBER:	LB 05c 001