

**Condition 5 (b)**  
 Photos of the existing ironmongery marked on a floor plan  
 & images of new ironmongery



**A**  
 Photographs displaying typical existing upper storey window ironmongery.  
 To be retained



**B**  
 Photographs displaying typical existing upper storey window ironmongery.  
 To be retained



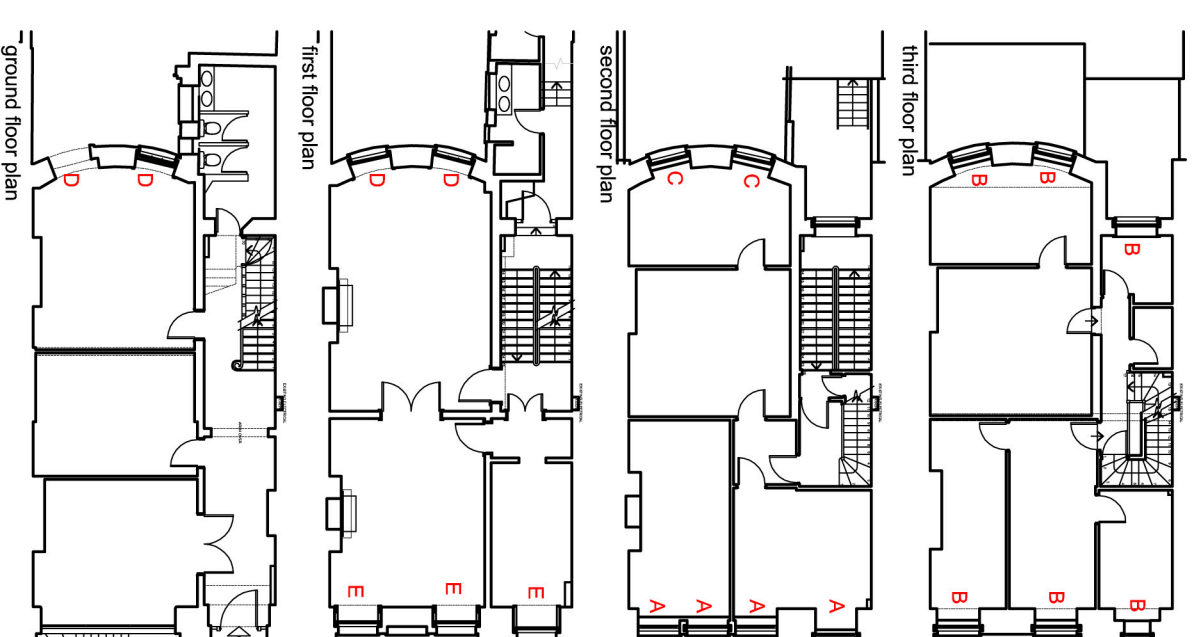
**D**  
 Photographs displaying typical existing first storey window ironmongery.  
 To be retained



**E**  
 Photographs displaying typical existing first storey window ironmongery.  
 To be retained



**C**  
 Photographs displaying typical existing upper storey window ironmongery.  
 To be retained



Buckingham  
 latch furn  
 W4210 AB



Edwardian  
 w3213 latch  
 furn AB

**BROOKS / MURRAY**

ARCHITECTS

8-10 NEW NORTH PLACE  
 LONDON EC2A 4JA  
 TEL 020 7739 9955  
 FAX 020 7739 9944

architects@brooksmurray.com

CLIENT:  
 Clarke Design and Build

JOB:  
 7 fitzroy square  
 & 11 Grafton Mews  
 London W1T 5HL

DATE: 20.11.13  
 SCALE: as shown @ A3

DRAWING TITLE:  
 Details in reference to  
 condition 5

DRAWING NUMBER:  
 LB 05b 002

Proposed brushed brass handle types throughout