

LEGEND

① Outline of upper level dormers as built

Alteration to upper level dormers location and size

NOTES

1. This drawing is based on the following documents:
 - (i) a CAD file of the rear facade as built by KYSON, supplied by the client;
 - (ii) Images of the rear facade before the works supplied by Camden Council;
 - (iii) drawing no 1112/AP-27 by The Charlton Brown Partnership of the approved front facade - 2011/0174/P from the Council's website.

2. The proposed fenestration is a combination of fixed and operable casements and doors. Operable casements are identified by hinges. None of the above documents (i)-(iii) provide adequate information for returning the rear facade to its as approved state shown in the relevant drawing no 1112/AP-27. This is because:
 - The approved drawing no 1112/AP-27 is not detailed enough to rely upon as it does not distinguish between frames and actual casements;
 - Both approved drawing and images have been used to assess the likely thickness of the frame sections and of the glazing bars and the relationship to each other. It is helpful that the original fenestration apertures were retained.
3. The proposals include:
 - The retention of the roof terrace at LG floor level and of the retaining wall at garden level both as built;
 - The retention of doorways instead of reinstatement of window openings at LG floor level central bays.

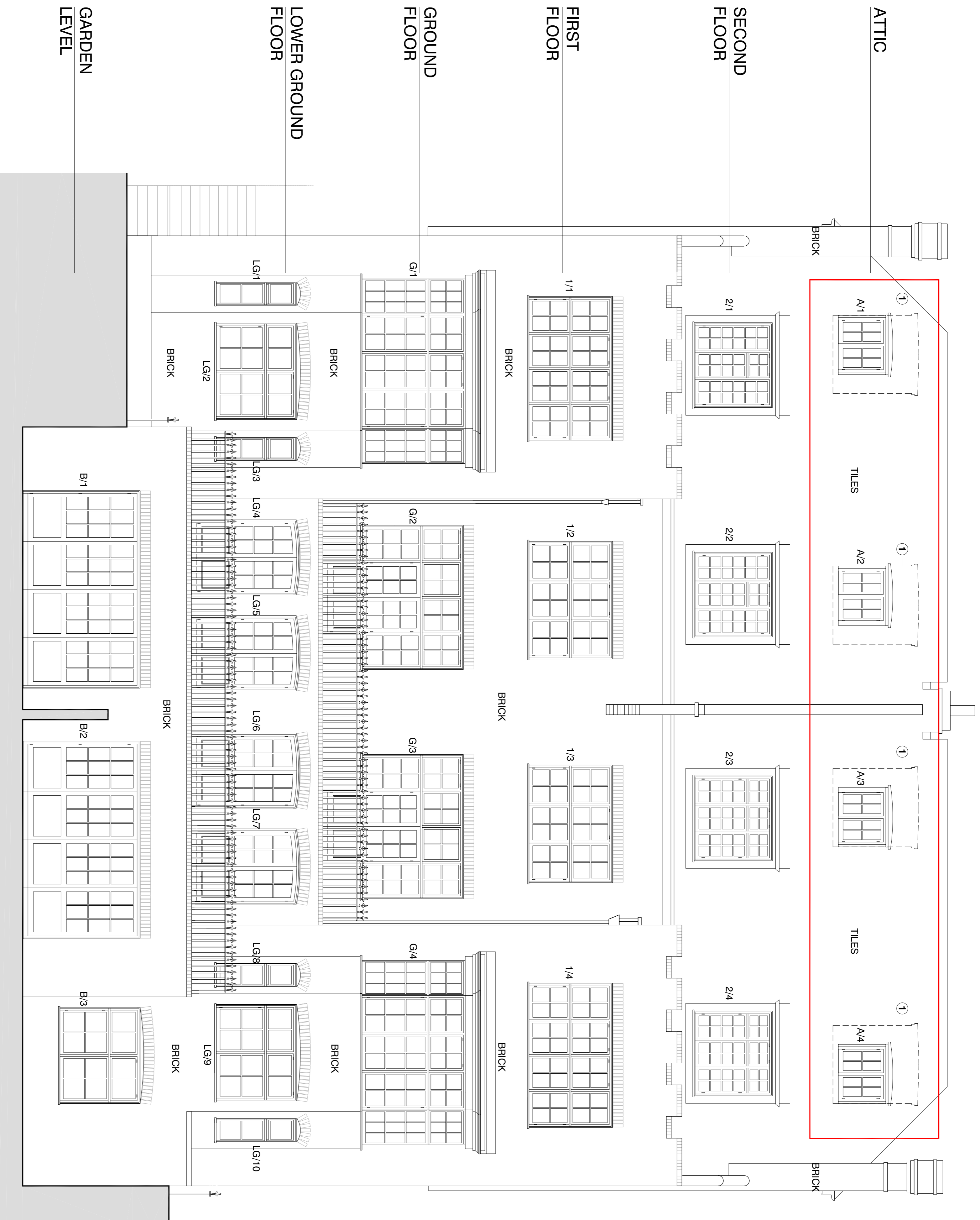
client: SHAKIB & Co
project

2082 29-30 LYNDHURST ROAD
ALTERATIONS TO: FENESTRATION OF FRONT AND REAR FACADES, UPPER LEVEL DORMERS TO REAR; RETENTION OF ROOF TERRACE, RETAINING WALL AND OPENINGS AT LG AND GARDEN LEVELS AS BUILT

D2111 - PROPOSED

rev/00
scale: 1:50 at A1
date: 11/11/2014

REAR ELEVATION



CONSERVATION PD

planning + design

a 114-118 Parkway
London NW1 7AN
t 020 7096 1504
f 020 7504 1701
e elemakri@conservationpd.com
w www.conservationpd.co.uk